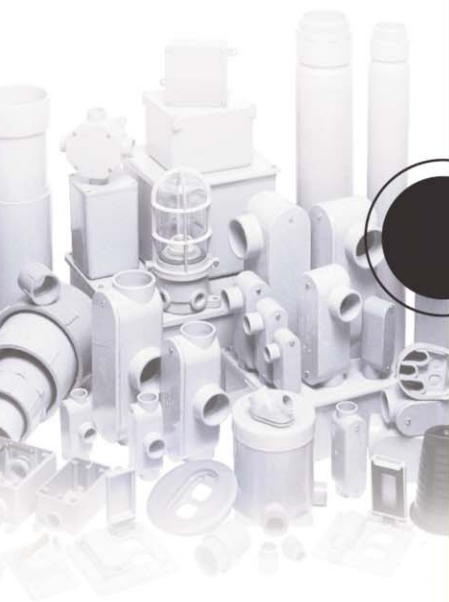


### STANDARDS

- Unique configuration flexibility
- Faster installation of multiple stub downs
  - Easy to link and arrange various sizes (1/2", 3/4" & 1")
- Closest grouping of stub downs possible

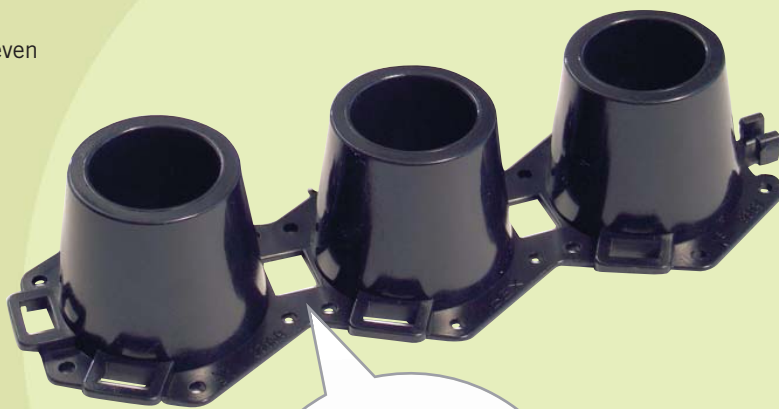


### NEW PRODUCT SHOWCASE

## Multi-Link™ Form Stubby

With our next generation stubby, we've made installing multiple ENT stub downs in poured concrete floors/ceiling assemblies even faster.

Designed in convenient rows of three, Kwikon Multi-Link Form Stubbies from IPEX feature a "snap together" design which enables them to be configured in a variety of tightly grouped formations. A cut line between each individual Stubby enables them to be easily separated by trimming with cutters or a knife. And all stubbies are made from the same durable polyethylene composition that our customers have come to know and trust.



Size (in.)	Part Number	Product Code
1/2	MSTB-10	089031
3/4	MSTB-15	089026
1	MSTB-20	089025

Each Multi-Link Form Stubby of the same size is designed to link together end to end and on a 45° pattern, closely grouping the stub downs in tight areas while still ensuring that the ENT reaches each stubby entry with ease.



Toll Free: (800) 265-1815

Direct: (519) 681-2140

[www.kraloyfittings.com](http://www.kraloyfittings.com)

Products are manufactured by IPEX Electrical Inc. and distributed in the United States by Kraloy, a division of Multi Fittings Corp.

Kraloy® is a trademark of Multi Fittings Corp.

45° Pattern



Groups



One or Two Stub Down

