

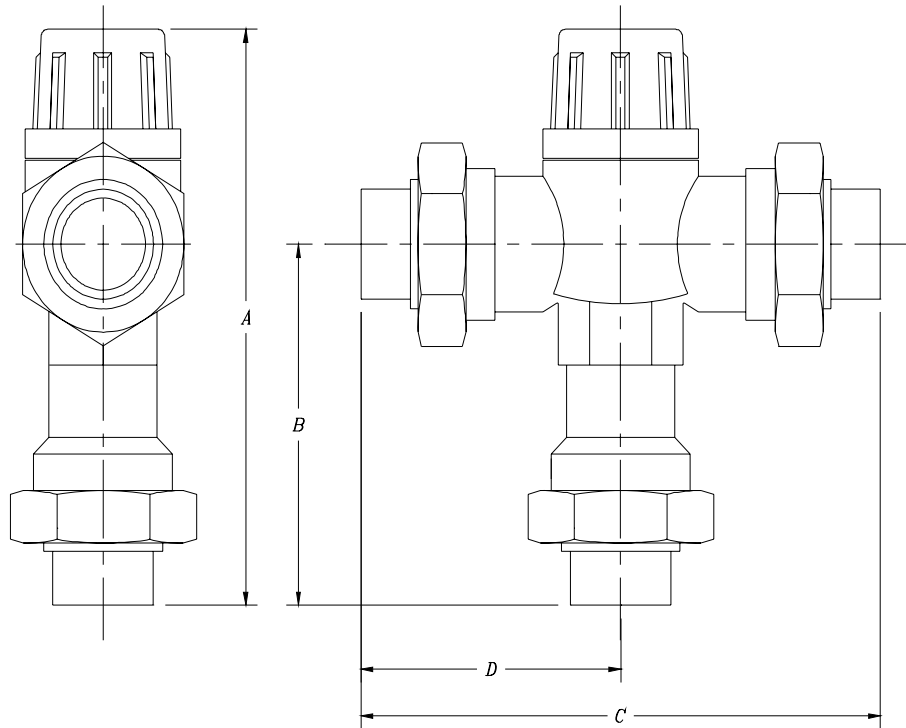


High Temperature Mixing Valve – QHMV-HTBO

Specification Sheet

Tag _____

Dimensional Data: Inches and [mm] are subject to manufacturing tolerances and change without notice.



Connections	Description	A	B	C	D
QMVFP3	Valve Body with 1/2" Female NPT Connectors	5-27/64" [138]	3-23/64" [85]	5-1/4" [133]	2-5/8" [66]
QMVFS4	Valve Body with 1/2" Female Sweat Connectors	5-27/64" [138]	3-23/64" [85]	5-1/4" [133]	2-5/8" [66]
QMVFP4	Valve Body with 3/4" Female NPT Connectors	5-1/2" [140]	3-29/64" [88]	5-7/16" [138]	2-23/32" [69]
QMVFS4	Valve Body with 3/4" Female Sweat Connectors	5-1/2" [140]	3-29/64" [88]	5-7/16" [138]	2-23/32" [69]
QMVCPCV4	Valve Body with 3/4" CPVC Connectors	5-27/64" [138]	3-3/8" [86]	5-9/32" [134]	2-41/64" [67]
QMV4X	Valve Body with 3/4" PEX Barb Connectors*	5-35/64" [141]	3-1/2" [89]	5-35/64" [141]	2-49/64" [70]
QMVP4	Valve Body with 3/4" Male NPT Connectors	6-7/32" [158]	4-13/64" [107]	6-61/64" [177]	3-31/64" [88]
QMVFS5	Valve Body with 1" Female Copper Sweat Connectors	5-15/32" [139]	3-7/16" [87]	5-9/64" [141]	2-37/64" [70]

* Requires an Annealed Copper Crimp Ring/QuickClamp™ Crimp Ring

Engineering Specification: Zurn High Temperature Thermostatic Mixing Valve. A bronze mixing valve used for non-potable system applications only. The valve designed to mix cold supply water with hot supply water and establish a set mixed supply water. The supply output water temperature has a settable range of 80-165°F (26.7-73.8°C) with a Cv of 2.6. Maximum working pressure of 145 PSI. ASSE 1017 listed and CSA Certified.

Accessories

___ **QCLP4X**

3/4" QuickClamp™ Crimp Rings

___ **QCR4X**

3/4" Copper Crimp Ring

Rev. A	Date: 11/04/08	C.N. No. 99311
Dwg. No. 82354	Prod. No. QHMV-HTBO	

ZURN PEX® PLUMBING AND RADIANT HEATING SYSTEMS HWY 11 EAST, COMMERCE, TX, U.S.A. 75429 PHONE: 800/872-7277 FAX: 800/209-2148 WEBSITE: www.zurn.com
IN CANADA: ZURN INDUSTRIES LIMITED 3544 NASHUA DRIVE, MISSISSAUGA, ONTARIO L4V 1L2 PHONE: 905/405-8272 FAX: 905/405-1292