

# DRYCONN®

## WATERPROOF CONNECTORS

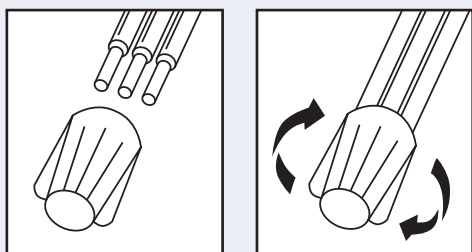
Filled Connectors for Low Voltage Use



### INSTALLATION INSTRUCTIONS

**IMPORTANT:** Turn off power before installing or removing connector. Product to be used in accordance with local and national codes.

1. Strip wires 3/8" (9.5mm) except #16 and smaller. Strip wires 7/16" (11.1 mm).
2. Pre-twisting is unnecessary. Hold stripped wires together with ends of insulation even. Lead stranded wires slightly.
3. Align any frayed strands or conductors.
4. Firmly push wire into connector and screw connector clockwise onto wire until tight. Do not reuse.



### DryConn® Blue/Blue

Catalog #	Selling Unit
10222	Bag of 20
10241	Canister of 100

### PRODUCT SPECIFICATIONS & MEASUREMENTS

Max. Voltage: 600V (1,000V in fixtures and signs)

Connector Size: 17/32" x 15/16"

Wire Type: Copper/Copper

Wire Range: Min #22/Max #12

Temperature Rating: 105°C (221°F)

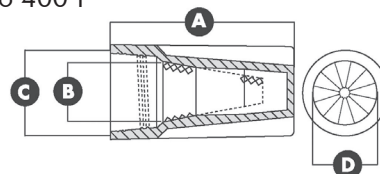
Silicone Sealant: -45°F to 400°F

UL Designation: KYN

Measurements (Inches):

A - 0.932 B - 0.260

C - 0.539 D - 0.422



Low voltage (30V Max.) suitable for use in damp, wet and direct bury applications.

### 600V Wire Combinations

1 #8 Str.	1 #10	1-3 #12
1-4 #14	2-5 #16	3-6 #20
1 #10 w/1 #12	1 #10 w/1-2 #14, 16 or 18	1 #10 w/3-4 #16 or 18
1 #12 w/1 -2 #14	1 #12 w/1-4 #16 or 18	2 #12 w/1 #14
2 #12 w/1-2 #16 or 18	1 #14 w/1-4 #16, 18 or 20	2 #14 w/1-3 #16, 18 or 20
3 #14 w/1 #16	3 #14 w/1-2 #18 or 20	1 #16 w/1-4 #18 or 20
1 #16 w/2-4 #22	2 #16 w/1-3 #18, 20 or 22	3 #16 w/1-2 #18, 20 or 22
4 #16 w/1-2 #18, 20 or 22	1 #18 w/3-4 #20 or 22	2 #18 w/3 #20 or 22
1 #10 w/1 #12 w/1 #14 or 16	1 #10 w/1 #12 w/1-2 #18	1 #10 w/1 #14 w/2 #16
1 #10 w/1 #14 w/1-3 #18	1 #10 w/2 #14 w/1 #16	1 #10 w/1 #16 w/1-2 #18
1 #12 w/1 #14 w/2 #16	2 #12 w/1 #14 w/1 #16 or 18	2 #12 w/1 #16 w/1-2 #18
1 #14 w/1 #16 w/1-3 #20	1 #14 w/1 #18 w/1-3 #20	2 #14 w/1 #16 w/1-2 #18 or 20
2 #14 w/1 #16 w/1-3 #22	3 #14 w/1 #16 w/1 #18, 20 or 22	3 #14 w/1 #18 w/1 #20 or 22
1 #16 w/1 #18 w/2-3 #20 or 22	1 #16 w/1 #18 w/3-4 #22	1 #16 w/2 #20 w/2 #22
2 #16 w/1 #18 w/1-2 #20 or 22	3 #16 w/1 #18 w/1 #20 or 22	1 #18 w/2 #20 w/3 #22
2 #18 w/1 #20 w/3 #22	2-5 #18	