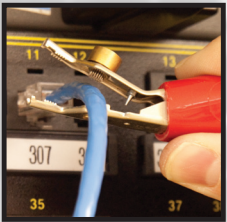
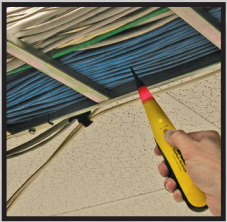


ToneProbe Cable Tracing Kit



Redefining tone & probe

The Sperry ToneProbe Kit takes tone and probe to the next level. Engineered for comfort over long periods, the ergonomic overmolded rubber construction of both transmitter and receiver will withstand all the punishment of everyday use. The transmitter features easy one-handed control of tone and continuity functions. Three distinct tones allow easy audible identification for multiple traces. For greater operator convenience, the receiver's 360° indicator light allows visibility from any angle. And when necessary, you can override the speaker with an earphone jack for silent operation.

ToneProbe Cable Tracing Kit



The new generation is tougher than the last.

The ToneProbe Kit is built to last for years. The transmitter is armed with some of the best heavy-duty alligator clips on the market. The extra-long probe tip can be removed and replaced in seconds. To extend battery life, the toner has an 'Auto Off' feature after 30 minutes. And because both units have low-battery indicators, you'll always be prepared for the next job. The ToneProbe Kit exceeds all minimum requirements for durability thanks to Sperry's 10 foot drop/250 pound crush rating backed by a Limited Lifetime Warranty.

		ET65220 ToneProbe Cable Tracing Kit
SPECIFICATIONS	Outlet Power – Continuity	3.25 V
	Outlet Power – Tone Mode	11.5 dBm
	Frequency – Nominal	Tone A – 1000 Hz; Tone B – 1500 Hz; Tone C – 2000 Hz
	Battery Type (Tone Generator)	9V Alkaline
	Battery Type (Probe)	9 V Alkaline
	Auto-Off (Tone Generator)	30 Minutes
	Low Battery Indication	✓
	Drop Rating	10'
	Crush Rating	250 lbs
FEATURES & FUNCTIONS	Traces & Identifies	Twisted pairs, coax cables, single conductors, & un-energized wiring
	LED Indication of Continuity	✓
	Three Unique Audible Tones	✓
	Heavy Duty Long-Nosed Alligator Clips	✓
	360° Visual Indication	✓
	Adjustable Volume Audible Indication	✓
	Patented Battery Self-Test Feature	✓
	Removable/Replaceable Probe Tip	✓
UNIT PACK	Qty	1
	Weight (lbs)	1.4
	Height x Width x Depth	6.5" W x 11" H x 1.75" D
MASTER PACK	Qty	2
	Weight (lbs)	3.1
	Height x Width x Length	7" W x 11.5" H x 4" D

! WARNING: Trace only non-energized wiring. Contact with live circuits can result in severe injury or death. Always ensure that voltage is not present prior to using this equipment.

