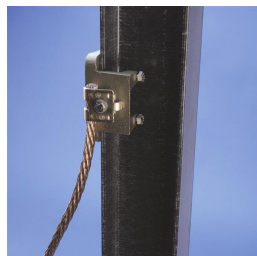
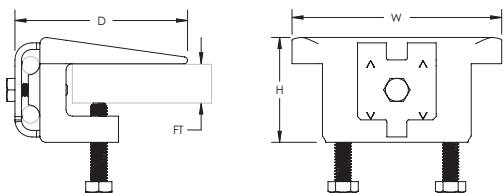


# Cast Two Bolt Beam Bonding Clamp – LPC557



- Clamp for bonding cable to flat metal objects such as I-beams, angle irons and channel irons
- Listed to UL® 96



Part Number	LPC557
Conductor Size, UL	Class 1 - Class 2 (4/0 Max)
Material	Copper
Flange Thickness (FT)	1" Max
Depth (D)	2 3/4"
Height (H)	2"
Width (W)	4"
Contact Area	8 in <sup>2</sup> Min
Unit Weight	2.055 lb
Certifications	UL
Standard Packaging Quantity	1 pc
UPC	78285643010
EAN-13	8711893096965

UL, UR, cUL, cUR, cULus and cURus are registered certification marks of UL LLC.

#### WARNING

Pentair products shall be installed and used only as indicated in Pentair's product instruction sheets and training materials. Instruction sheets are available at [erico.pentair.com](http://erico.pentair.com) and from your Pentair customer service representative. Improper installation, misuse, misapplication or other failure to completely follow Pentair's instructions and warnings may cause product malfunction, property damage, serious bodily injury and death and/or void your warranty.

© 2017 Pentair All rights reserved

Pentair, CADDY, CADWELD, CRITEC, ERICO, ERIFLEX, ERITECH and LENTON are owned by Pentair or its global affiliates.

All other trademarks are the property of their respective owners. Pentair reserves the right to change specifications without prior notice.