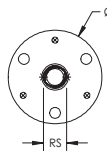
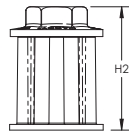
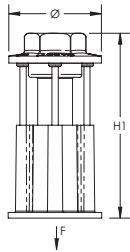


CADDY ROD LOCK Plywood Form Preset Anchor – CRLW37EG



- Eliminate overhead drilling into building structure – CADDY ROD LOCK Preset Anchors are cast in place
- Nails hold the anchor in place during the pour and easily break off with a strike of a hammer once the plywood forms are removed
- Easy "push-to-install" design allows installers to simply push the threaded rod through the mounting hole, instantly holding it in position
- Works with slightly damaged threads and minor burrs on the threaded rod
- Prefabricated assemblies easily lift and lock into place, helping to save time and money
- Plastic flange acts as insert locator when the forms are removed
- CADDY ROD LOCK Preset Anchors have a pending evaluation to AC446, Acceptance Criteria for Headed Cast-In Specialty Inserts in Concrete



Part Number	CRLW37EG
Material	Steel
Finish	Electrogalvanized
Rod Size (RS)	3/8"
Diameter (Ø)	1.65"
Height 1 (H1)	3.2"
Height 2 (H2)	2.4"
Static Load (F)	1,407 lb
Certifications	cULus FM
Standard Packaging Quantity	25 pc
UPC	78285679382



FM is a registered certification mark of FM Approvals LLC, LTD. UL, UR, cUL, cUR, cULus and cURus are registered certification marks of UL LLC.

WARNING

Pentair products shall be installed and used only as indicated in Pentair's product instruction sheets and training materials. Instruction sheets are available at erico.pentair.com and from your Pentair customer service representative. Improper installation, misuse, misapplication or other failure to completely follow Pentair's instructions and warnings may cause product malfunction, property damage, serious bodily injury and death and/or void your warranty.

© 2017 Pentair. All rights reserved.

Pentair, CADDY, CADWELD, CRITEC, ERICO, ERIFLEX, ERITECH and LENTON are owned by Pentair or its global affiliates.

All other trademarks are the property of their respective owners. Pentair reserves the right to change specifications without prior notice.

