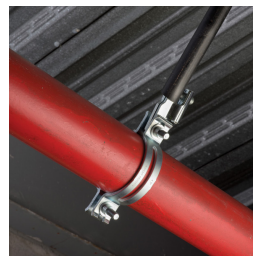
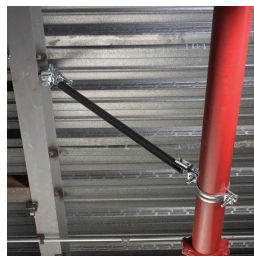
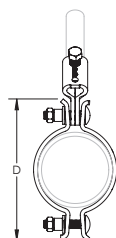
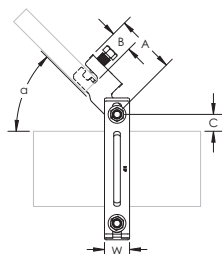


# Universal Sway Brace – CSB0400



- Meets requirements of the Buy American Act
- Use for both lateral and longitudinal sway brace applications
- Unique slotted holes provide for easy slip-on installation eliminating loose hardware
- Snap-off bolt head helps enable easy installation and inspection of seismic sway braces
- Works with 1" through 2" brace pipes to reduce inventory
- Meets NFPA®-13 requirements for seismic sway bracing
- FM® Specification Tested



Part Number	CSB0400
Material	Steel
Finish	Electrogalvanized
Pipe Size	4"
Brace Pipe Size	1" – 2"
Width (W)	1 1/2"
Angle (a)	45°
A	3 9/16"
B	1 5/16"
C	1 1/16"
D	8 1/2"
Certifications	cULus FM Approved, Seismic FM Tested OSH PD
Standard Packaging Quantity	10 pc
UPC	78285692020
EAN-13	0782856920205

UL Loads								
Part Number	Lateral				Longitudinal			
	Sch 10/Sch 40 Service Pipe	Bull Moose Eddy Flow Service Pipe	Wheatland Mega-Flow Service Pipe	Youngstown Fire-Flo Service Pipe	Sch 10/Sch 40 Service Pipe	Bull Moose Eddy Flow Service Pipe	Wheatland Mega-Flow Service Pipe	Youngstown Fire-Flo Service Pipe
CSB0100xx	2,765 lb	N/A	N/A	N/A	1,600 lb	N/A	N/A	N/A
CSB0125xx	2,765 lb	2,765 lb	2,765 lb	N/A	1,000 lb	1,000 lb	1,000 lb	1,000 lb
CSB0150xx	2,765 lb	2,765 lb	2,765 lb	2,765 lb	1,600 lb	1,600 lb	1,600 lb	1,600 lb
CSB0200xx	2,765 lb	2,765 lb	2,765 lb	2,765 lb	2,015 lb	2,015 lb	2,015 lb	2,015 lb
CSB0250xx	2,765 lb	2,765 lb	2,765 lb	2,765 lb	2,015 lb	2,015 lb	2,015 lb	2,015 lb
CSB0300xx	2,765 lb	2,765 lb	2,765 lb	2,765 lb	2,100 lb	2,100 lb	2,100 lb	2,100 lb
CSB0400xx	2,765 lb	2,765 lb	2,765 lb	2,765 lb	2,600 lb	2,600 lb	2,600 lb	2,600 lb
CSB0500xx	2,765 lb	N/A	N/A	N/A	2,600 lb	N/A	N/A	N/A
CSB0600xx	2,765 lb	N/A	2,765 lb	N/A	2,600 lb	N/A	2,600 lb	N/A
CSB0800xx	2,765 lb	N/A	N/A	N/A	2,600 lb	N/A	N/A	N/A
CSB1000xx	2,800 lb	N/A	N/A	N/A	2,800 lb	N/A	N/A	N/A
CSB1200xx	N/A	N/A	N/A	N/A	N/A	N/A	N/A	N/A

FM Loads								
Part Number	Horizontal Capacity per Installation Angle from Vertical							
	Lateral				Longitudinal			
	30° - 44°	45° - 59°	60° - 74°	75° - 90°	30° - 44°	45° - 59°	60° - 74°	75° - 90°
FM Approved Lightwall, Sch 10 and Sch 40 Service Pipes								
0.188" Wall and Sch 40 Service Pipes								
CSB0100xx	1,490 lb	2,110 lb	2,580 lb	2,900 lb	1,290 lb	1,240 lb	1,260 lb	1,400 lb
CSB0125xx	1,380 lb	1,960 lb	2,400 lb	2,690 lb	1,290 lb	1,240 lb	1,260 lb	1,400 lb
CSB0150xx	1,380 lb	1,960 lb	2,400 lb	2,690 lb	1,200 lb	1,860 lb	2,180 lb	2,250 lb
CSB0200xx	1,380 lb	1,960 lb	2,400 lb	2,690 lb	1,200 lb	1,820 lb	2,180 lb	2,250 lb
CSB0250xx	1,440 lb	2,030 lb	2,490 lb	2,790 lb	1,320 lb	1,820 lb	2,190 lb	2,500 lb
CSB0300xx	1,390 lb	1,970 lb	2,420 lb	2,710 lb	1,300 lb	1,790 lb	2,190 lb	2,500 lb
CSB0400xx	1,390 lb	1,970 lb	2,420 lb	2,710 lb	1,300 lb	1,790 lb	2,190 lb	2,500 lb
CSB0500xx	1,390 lb	1,970 lb	2,420 lb	2,710 lb	1,300 lb	1,790 lb	2,190 lb	2,500 lb
CSB0600xx	1,460 lb	2,060 lb	2,520 lb	2,830 lb	1,410 lb	1,950 lb	2,350 lb	2,680 lb
CSB0800xx	1,330 lb	1,880 lb	2,300 lb	2,580 lb	1,400 lb	1,920 lb	2,350 lb	2,640 lb
CSB1000xx	1,330 lb	1,880 lb	2,300 lb	2,580 lb	1,400 lb	1,920 lb	2,350 lb	2,640 lb
CSB1200xx	1,680 lb	2,370 lb	2,910 lb	3,260 lb	1,600 lb	1,860 lb	2,240 lb	2,590 lb

FM® Specification Tested for 1-1/2" to 4" pipe sizes using no hub cast iron pipe.

Load ratings for Sch 10 may also be applied to AS 1074 Medium, GB/T 3091, EN 10255 (Medium or Heavy), and JIS G3452 pipe.

Load ratings for Sch 40 may also be applied to AS 1074 Heavy, GB/T 3091, EN 10255 (Heavy), and JIS G3454 pipe.

Load ratings for FM approved lightwall may also be applied to AS 1074 Lightwall, EN 10255 L, EN 10220, and GB/T 8163 pipe.

FM is a registered certification mark of FM Approvals LLC, LTD. NFPA is a registered trademark of National Fire Protection Association, Inc. UL, UR, cUL, cUR, cULus and cURus are registered certification marks of UL LLC.

#### WARNING

nVent products shall be installed and used only as indicated in nVent's product instruction sheets and training materials. Instruction sheets are available at [www.erico.com](http://www.erico.com) and from your nVent customer service representative. Improper installation, misuse, misapplication or other failure to completely follow nVent's instructions and warnings may cause product malfunction, property damage, serious bodily injury and death and/or void your warranty.

© 2020 nVent All rights reserved

nVent, nVent CADDY, nVent ERICO, nVent ERIFLEX and nVent LENTON are owned by nVent or its global affiliates.

All other trademarks are the property of their respective owners. nVent reserves the right to change specifications without prior notice.

