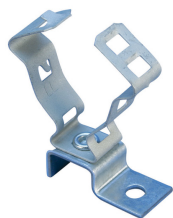
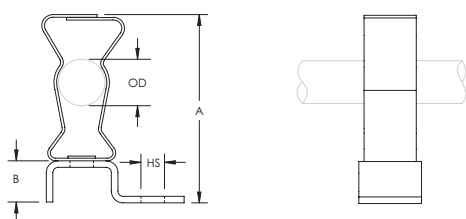


# Snap Close Metal Deck Conduit Clamp – AOL812M



- Provides spacing between conduit and deck surface
- Easily attached with screw gun or power tool
- Permits conduit to be laid out and then attached
- Eliminates need for offset bending conduit



|                             |                                     |
|-----------------------------|-------------------------------------|
| Part Number                 | AOL812M                             |
| Material                    | Spring Steel<br>Steel               |
| Finish                      | nVent CADDY Armour<br>Pregalvanized |
| EMT Conduit Size            | 1/2"<br>3/4"                        |
| Rigid Conduit Size          | 1/2"<br>3/4"                        |
| Outer Diameter (OD)         | 0.709" – 1.181"                     |
| Hole Size (HS)              | 1/4"                                |
| A                           | 2.396"                              |
| B                           | 0.49"                               |
| Standard Packaging Quantity | 100 pc                              |
| UPC                         | 78285627268                         |

No load rating, for positioning only.

## WARNING

nVent products shall be installed and used only as indicated in nVent's product instruction sheets and training materials. Instruction sheets are available at [www.erico.com](http://www.erico.com) and from your nVent customer service representative. Improper installation, misuse, misapplication or other failure to completely follow nVent's instructions and warnings may cause product malfunction, property damage, serious bodily injury and death and/or void your warranty.

© 2020 nVent All rights reserved

nVent, nVent CADDY, nVent ERICO, nVent ERIFLEX and nVent LENTON are owned by nVent or its global affiliates.

All other trademarks are the property of their respective owners. nVent reserves the right to change specifications without prior notice.