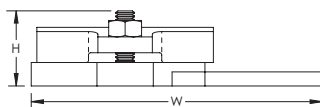
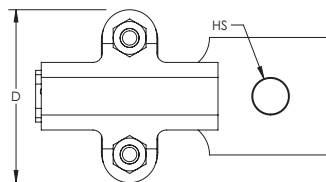


Cast Bonding Lug – LPC551L12



- Provides contact area for main sized bonding



Part Number	LPC551L12
Conductor Size, UL	Class 1 - Class 2 (4/0 Max) Secondary
Material	Brass
Finish	Tinned
Hole Size (HS)	9/16"
Contact Area	3 in ² Min
Depth (D)	1 9/16"
Height (H)	1"
Width (W)	3 7/8"
Unit Weight	0.54 lb
Certifications	UL
Standard Packaging Quantity	1 pc
UPC	78285643000
EAN-13	8711893096958

UL, UR, cUL, cUR, cULus and cURus are registered certification marks of UL LLC.

WARNING

Pentair products shall be installed and used only as indicated in Pentair's product instruction sheets and training materials. Instruction sheets are available at erico.pentair.com and from your Pentair customer service representative. Improper installation, misuse, misapplication or other failure to completely follow Pentair's instructions and warnings may cause product malfunction, property damage, serious bodily injury and death and/or void your warranty.

© 2017 Pentair. All rights reserved.

Pentair, CADDY, CADWELD, CRITEC, ERICO, ERIFLEX, ERITECH and LENTON are owned by Pentair or its global affiliates.

All other trademarks are the property of their respective owners. Pentair reserves the right to change specifications without prior notice.