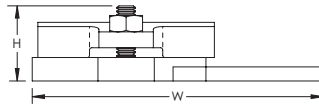
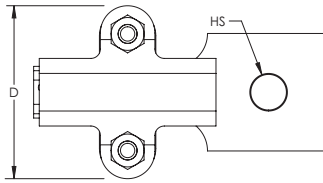


Cast Bonding Lug – LPC551L38



- Provides contact area for main sized bonding



Part Number	LPC551L38
Conductor Size, UL	Class 1 - Class 2 (4/0 Max) Secondary
Material	Brass
Finish	Tinned
Hole Size (HS)	7/16"
Contact Area	3 in ² Min
Depth (D)	1 9/16"
Height (H)	1"
Width (W)	3 7/8"
Unit Weight	0.54 lb
Certifications	UL
Standard Packaging Quantity	1 pc
UPC	78285643001
EAN-13	0782856430018

UL, UR, cUL, cUR, cULus and cURus are registered certification marks of UL LLC.

WARNING

nVent products shall be installed and used only as indicated in nVent's product instruction sheets and training materials. Instruction sheets are available at www.erico.com and from your nVent customer service representative. Improper installation, misuse, misapplication or other failure to completely follow nVent's instructions and warnings may cause product malfunction, property damage, serious bodily injury and death and/or void your warranty.

© 2020 nVent All rights reserved

nVent, nVent CADDY, nVent ERICO, nVent ERIFLEX and nVent LENTON are owned by nVent or its global affiliates.

All other trademarks are the property of their respective owners. nVent reserves the right to change specifications without prior notice.