

**CADDY®**

# **CAT-CM™**

## Cable Support System



**ERICO®**

# This Cat Earned Its Stripes

Beginning with the J-Hook, ERICO® has continued to innovate and develop the complete line of CABLECAT™ products to support today's high-performance cable. And now, the makers of CADDY® Fasteners introduce

a universal cable support system. The new CADDY CAT-CM is a high-performance cable support system that brings you unprecedented installation flexibility. Versatile components result in fast, efficient installations.



U-Hook



Double J-Hook

**The CAT-CM system is the answer to virtually any installation challenge.**

- When there's a need for horizontal and vertical runs
- When the specs require continuous cable support spacing anywhere from 3 inches to 5 feet
- When the drawings call for hanging from the ceiling, beam, or strut and mounting on the floor

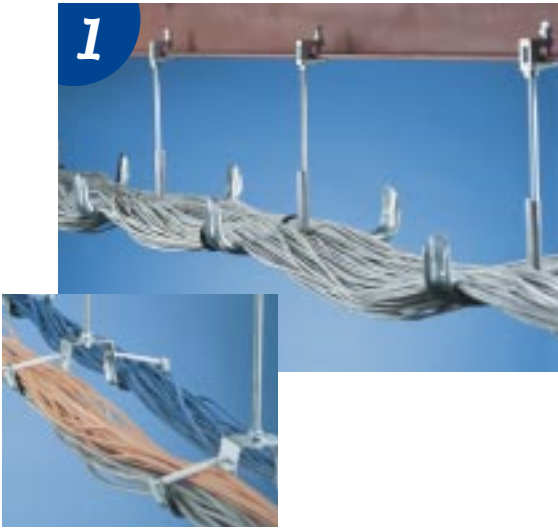
It doesn't matter. The CAT-CM can manage high-performance cable in any application.

The new CADDY CAT-CM cable support system provides a convenient pathway for wires and cables. Specially designed U-Hooks and double J-Hooks have large-diameter, rounded support surfaces/edges to avoid over-bending and kinking of cables. The U-Hooks are available in a range of sizes for different cable capacity needs.

# Three Installation Options

The CAT-CM system offers three installation options that can be easily combined – resulting in installation flexibility to meet every need.

1



## Rod-Mounted Option

The Rod-Mounted Option allows for field assembly of the hooks onto All-Thread Rod. Benefits include:

- Customized intervals between hooks to comply with the TIA 569 standard as well as ISO/IEC 18010
- Easy level changes - under or over ductwork, piping, etc. - no level change fittings necessary
- Direct attachment to the ceiling or building structure with threaded rod and CADDY Fasteners

2



## Cantilever-Mounted Option

The Cantilever-Mounted Option consists of U-Hooks being mounted with brackets to walls and columns. This option allows for:

- Cable runs along walls
- Specification of individual hook spacing as needed
- Mounting of cabling within existing column grid

3



## Strut-Mounted Option

The Strut-Mounted Option is accomplished by assembling the hooks to strut for a cost-effective alternative to center rail cable tray and wire basket systems. The Strut-Mounted option:

- Utilizes standard strut which is readily available and provides strength
- Has sheet-metal U-hooks (rungs) with specially designed quick-attach strut fasteners for virtually any half-slot strut
- Allows for customized support spacing
- Has fittings for horizontal and vertical change of direction - simplifying angle and level changes
- Offers optional rollers and retainers on the U-Hooks to retain cables and support cable pulls
- Has protective tubes for the threaded rod to eliminate scraping and cutting of cable sheath during pulling
- U-Hooks to be mounted on a base (e.g., Pipe Pier™ in raised floor applications) allowing for a large amount of cables to be organized and neatly routed

™ Pipe Pier is a trademark of Pipe Pier Inc.

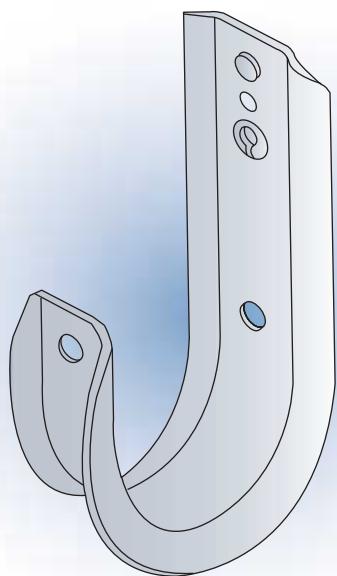


# The Evolution of CABLECAT

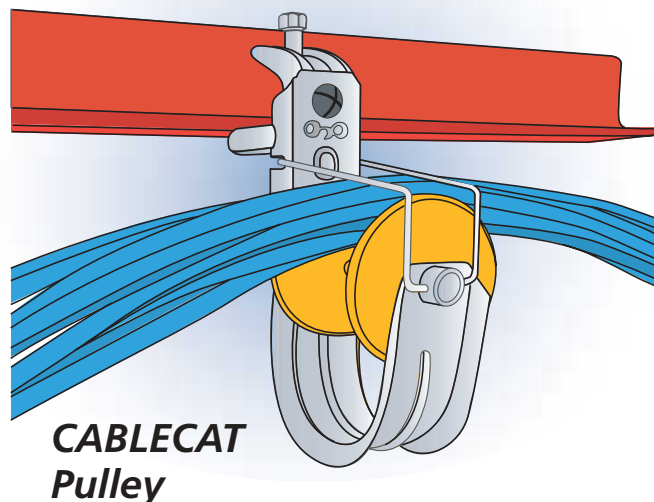
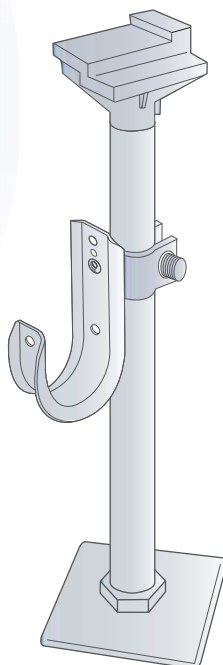
The advent of high-performance cables created the need for wide-base support. ERICO developed the CABLECAT line to meet that need. We combine the wide base with

the efficiency of our innovative installation systems – replacing more rigid and cumbersome methods.

***J-Hook for wall, rod, wire, beam, strut, purlin, T-bar and ceiling attachment***



***Raised Floor Cable Support***



## Installation Options

### Strut-Mount Installation



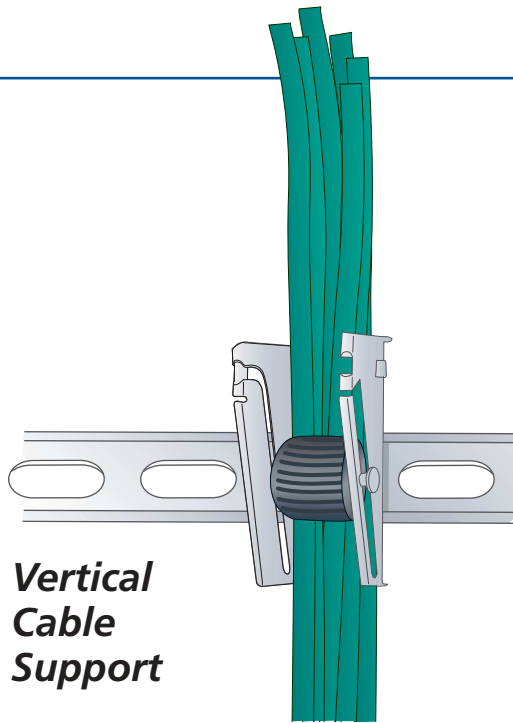
Mount U-Hook or Double J-Hook to strut.



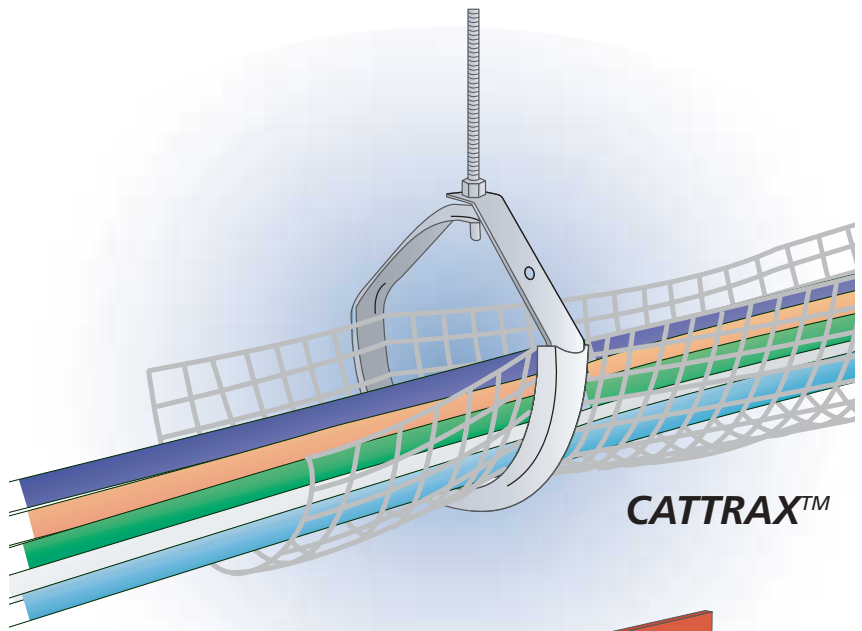
Mount strut to All-Thread Rod.



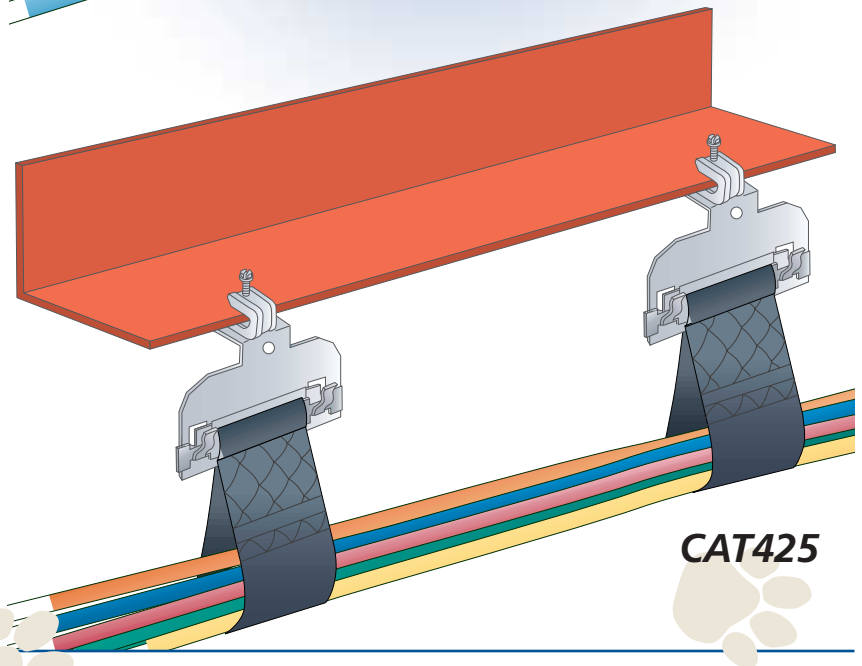
Mount assembly to beam



**Vertical  
Cable  
Support**



**CATTRAX™**



**CAT425**

## Rod-Mount Installation



Mount U-Hook or Double J-Hook  
to All-Thread Rod



Connect the U-Hook or Double  
J-Hook with All-Thread Rod to  
beam with a beam clamp

## Cantilever Mount Installation

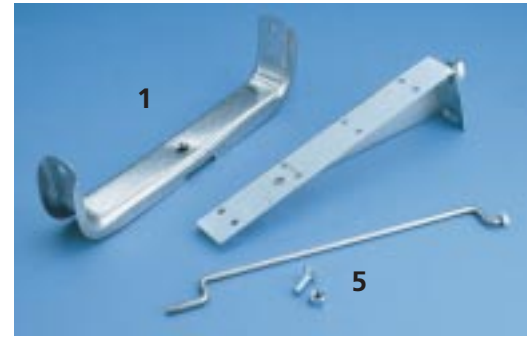


Attach U-Hook onto wall bracket already  
mounted on wall.

# System Components



Strut Mount



Cantilever Mount



Rod Mount

UPC# 782856	Catalog #	Description	Qty per Box/Case	Weight per Box Kg. (Lb.)	Figure#
46498	CAT100CM	Double J-Hook	20/120	3.4 (7.5)	—
46486	CAT200CM	U-Hook 200 mm/8" with T-nut*	10/50	2.7 (6)	1
46489	CAT200CMLN	U-Hook 200 mm/8" less nut	10/50	2.3 (5)	1
46485	CAT300CM	U-Hook 300 mm/12" with T-nut*	10/50	3.2 (7)	1
46490	CAT300CMLN	U-Hook 300 mm/12" less nut	10/50	2.7 (6)	1
46488	CATLCCM	Level-change swivel bracket	4 in bag 5 bags/box	5.9 (13)	2
46487	CATSLCM	Same-level swivel bracket	2 in bag 10 bags/box	5.9 (13)	3
46493	CATRL200CM	Roller 200 mm/8" (incl. rod & nuts)	10/no case	2.3 (5)	4
46494	CATRL300CM	Roller 300 mm/12" (incl. rod & nuts)	10/no case	3.2 (7)	4
46496	CATRT200CM	Wire Retainer 200 mm/8"	50/no case	3.4 (7.5)	5
46495	CATRT300CM	Wire Retainer 300 mm/12"	50/no case	4.5 (10)	5
46497	CATTBCM	Protection tube	30/no case	1.6 (3.5)	6
46491	CATSPCM	Strut support plate	20/no case	0.9 (2)	7

\*Quick-Attach T-nut for HALF SLOT Strut

## Cable Capacity Chart

Cable	CAT100CM on strut	CAT100CM on rod	CAT200CM on strut	CAT200CMLN on rod or cantilever	CAT300CM on strut	CAT300CMLN on rod or cantilever
4-pair UTP, Cat 5/5e	50	80	320	500	480	750
4-pair UTP, Cat 6	32	50	200	315	300	470
4-pair ScTP/FTP	24	40	160	250	240	375
4-pair STP	16	26	110	170	160	250



*Strut-Mount highlighting rod protection tube, rollers and level change bracket*



*Double J-Hooks shown attached to standard strut*



## CAT-CM...

...leading the next generation of cable support systems





www.erico.com



#### AUSTRALIA

6 Chilvers Road  
P.O. Box 148  
Thornleigh (Sydney) NSW 2120  
Australia  
Tel. 61-2-9479-8500  
Fax 61-2-9484-9188



#### HONG KONG

Unit 1, 2nd Floor, Block A  
Po Yip Building  
62-70 Texaco Road  
Tsueng Wan, New Territories  
Hong Kong  
Tel. 852-2764-8808  
Fax 852-2764-4486



#### SINGAPORE

16 Wan Lee Road  
Jurong Industrial Estate  
Singapore 627946  
Tel. 65-6-268-3433  
Fax 65-6-268-1389



#### BELGIUM

Lambroekstraat 5A  
B-1831 Diegem  
Belgium  
Tel. 32-14-69-96-88  
Fax 32-14-69-96-90



#### HUNGARY

Ceglédi út 1-3  
1107 Budapest  
Hungary  
Tel. 36-1-431-3464  
Fax 36-1-431-3471



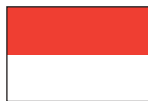
#### SPAIN

C/ Provenza 288, Pral.  
08008 Barcelona  
Spain  
Tel. 34-93-467-7726  
Fax 34-93-467-7725



#### BRAZIL

R. Dom Pedro Henrique de Orleans  
e Braganca, 276  
Vila Jaguara, Sao Paulo 05117-000  
Brazil  
Tel. 55-11-3621-4111  
Fax 55-11-3621-4066



#### INDONESIA

Wisma Danamon Aetna Life, 19th Floor  
Jalan Jend. Sudirman Kav. 45-46  
Jakarta 12930  
Indonesia  
Tel. 62-21-575-0941  
Fax 62-21-575-0942



#### SWEDEN

Carlsgatan 12 A  
211 20 Malmö  
Sweden  
Tel. 46-40-611-1360  
Fax 46-40-611-9415



#### CANADA

34600 Solon Road  
Solon, Ohio 44139  
U.S.A.  
Tel. 1-800-677-9089  
Fax 1-800-677-8131



#### ITALY

Via M. Buonarroti, 15  
20090 Cesano Boscone, Milano  
Italy  
Tel. 39-02-4586-6517  
Fax 39-02-4860-0622



#### SWITZERLAND

Pra Pury 7d  
3280 Murten  
Switzerland  
Tel. 41-26-672-9999  
Fax 41-26-672-9998



#### CHILE

Alcantara 200  
Piso 6  
Las Condes  
Santiago  
Tel. 56-2-370-2908  
Fax 56-2-370-2914



#### MEXICO

Av. Melchor Ocampo 193  
Piso 13 Torre "A"  
11300 Mexico D.F.  
Mexico  
Tel. 52-5-260-5991  
Fax 52-5-260-3310



#### THAILAND

Level 23, M. Thai Tower, All Seasons Place  
87 Wireless Road  
Pathumwan, Bangkok 10330  
Thailand  
Tel. 66-2-627-9037  
Fax 66-2-627-9168



#### DENMARK

Carlsgatan 12 A  
211 20 Malmö  
Sweden  
Tel. 45-46-19-1941  
Fax 45-46-19-1942



#### NETHERLANDS

Postbus 487  
NL - 5000 AL Tilburg  
Netherlands  
Tel. 31-13-583-5400  
Fax 31-13-583-5499



#### TURKEY

Insaat Malzemeleri, Perpa Ticaret Merkezi  
B Blok, 5 Ket, 5 Cadde.297  
Istanbul 80270  
Turkey  
Tel. 90-212-210-0825  
Fax 90-212-210-0827



#### FRANCE

Rue Benoit Fourneryon Z.I. Sud  
Boite postal 31  
42161 Andrezieux Cedex  
France  
Tel. 33-4-7736-5656  
Fax 33-4-7755-3789



#### NORWAY

Postboks 148  
NO-1366 Lysaker  
Norway  
Tel. 47-67-53-1200  
Fax 47-67-12-4268



#### UNITED KINGDOM

52 Milford Road  
Reading, Berkshire RG1 8LJ  
United Kingdom  
Tel. 44-118-958-8386  
Fax 44-118-959-4856



#### GERMANY

D-66851 Schwanenmuehle  
Germany  
Tel. 49-6307-918-10  
Fax 49-6307-918-150



#### POLAND

54-613 Wroclaw  
ul. Krzemieniecka 17  
Poland  
Tel. 48-71-357-4827  
Fax 48-71-342-4099



#### UNITED STATES

34600 Solon Road  
Solon, Ohio 44139  
U.S.A.  
Tel. 1-440-248-0100  
Fax 1-440-248-0723