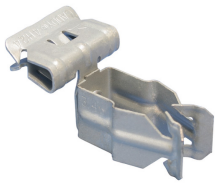
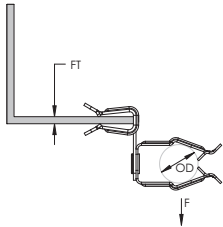


# H-PSM Conduit to Flange Clip, Side Mount – 16P58SM



- Requires only a hammer to install
- Available for EMT, rigid and aluminum conduit
- Will pivot thru 360°



|                             |                 |
|-----------------------------|-----------------|
| Part Number                 | 16P58SM         |
| Orientation                 | Side Mount      |
| Material                    | Spring Steel    |
| Finish                      | CADDY ARMOUR    |
| EMT Conduit Size            | 1"              |
| Outer Diameter (OD)         | 1.181" – 1.378" |
| Flange Thickness (FT)       | 5/16" – 1/2"    |
| Ultimate Static Load (F)    | 15 lb           |
| Standard Packaging Quantity | 100 pc          |
| UPC                         | 78285612266     |
| EAN-13                      | 8711893752748   |

Indicated loads are ultimate and should not be combined.

## WARNING

Pentair products shall be installed and used only as indicated in Pentair's product instruction sheets and training materials. Instruction sheets are available at [erico.pentair.com](http://erico.pentair.com) and from your Pentair customer service representative. Improper installation, misuse, misapplication or other failure to completely follow Pentair's instructions and warnings may cause product malfunction, property damage, serious bodily injury and death and/or void your warranty.

© 2017 Pentair. All rights reserved.

Pentair, CADDY, CADWELD, CRITEC, ERICO, ERIFLEX, ERITECH and LENTON are owned by Pentair or its global affiliates.

All other trademarks are the property of their respective owners. Pentair reserves the right to change specifications without prior notice.

