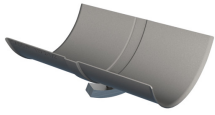
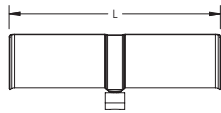
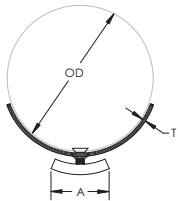


# 119 Strut Mounted Insulation Shield – 1190500



- Recommended for the suspension of stationary insulated pipe lines
- Flared edges help prevent sharp surfaces from coming into contact with the pipe
- Fits into open side of strut channel



|                             |               |
|-----------------------------|---------------|
| Part Number                 | 1190500       |
| Material                    | Steel         |
| Finish                      | Pregalvanized |
| Shield Size                 | 5"            |
| Outer Diameter (OD)         | 5.644"        |
| Length (L)                  | 12"           |
| Thickness (T)               | 20 GA         |
| A                           | 1 3/4"        |
| Standard Packaging Quantity | 40 pc         |
| UPC                         | 78285680078   |

| Insulation Shield Size Chart for Iron Pipe |                      |        |        |        |     |        |     |        |     |
|--|----------------------|--------|--------|--------|-----|--------|-----|--------|-----|
| Nominal Iron Pipe Size                     | Insulation Thickness |        |        |        |     |        |     |        |     |
|  | 1/2"                 | 3/4"   | 1"     | 1 1/2" | 2"  | 2 1/2" | 3"  | 3 1/2" | 4"  |
| 1/2"                                       | 2"                   | 2"     | 2 1/2" | 3 1/2" | 5"  | 6"     | 8"  | -      | -   |
| 3/4"                                       | 2"                   | 2 1/2" | 2 1/2" | 3 1/2" | 5"  | 6"     | 8"  | -      | -   |
| 1"   | 2"                   | 2 1/2" | 3"     | 4"     | 5"  | 6"     | 8"  | -      | -   |
| 1 1/4"                                     | 2 1/2"               | 3"     | 3"     | 5"     | 5"  | 6"     | 8"  | -      | -   |
| 1 1/2"                                     | 2 1/2"               | 3"     | 3 1/2" | 5"     | 6"  | 8"     | 8"  | -      | -   |
| 2"   | 3"                   | 3 1/2" | 4"     | 5"     | 6"  | 8"     | 8"  | 10"    | -   |
| 2 1/2"                                     | 3 1/2"               | 4"     | 5"     | 6"     | 8"  | 8"     | 10" | 10"    | -   |
| 3"   | 4"                   | 5"     | 5"     | 8"     | 8"  | 10"    | 10" | 10"    | 12" |
| 3 1/2"                                     | 5"                   | 5"     | 6"     | 8"     | 8"  | 10"    | 10" | 12"    | 12" |
| 4"   | 5"                   | 6"     | 6"     | 8"     | 8"  | 10"    | 10" | 12"    | 12" |
| 5"   | 6"                   | 8"     | 8"     | 8"     | 10" | 10"    | 12" | 12"    | -   |

| Insulation Shield Size Chart for Iron Pipe |                      |      |     |        |     |        |     |        |    |
|--|----------------------|------|-----|--------|-----|--------|-----|--------|----|
| Nominal Iron Pipe Size                     | Insulation Thickness |      |     |        |     |        |     |        |    |
|  | 1/2"                 | 3/4" | 1"  | 1 1/2" | 2"  | 2 1/2" | 3"  | 3 1/2" | 4" |
| 6"   | 8"                   | 8"   | 8"  | 10"    | 10" | 12"    | 12" | -      | -  |
| 8"   | 10"                  | 10"  | 10" | 12"    | 12" | -      | -   | -      | -  |
| 10"  | 12"                  | 12"  | 12" | -      | -   | -      | -   | -      | -  |

| Insulation Shield Sizing Chart for Copper Tubing |                      |        |        |        |
|--|----------------------|--------|--------|--------|
| Nominal Copper Tube Size                         | Insulation Thickness |        |        |        |
|  | 1/2"                 | 3/4"   | 1"     | 1 1/2" |
| 1/2"   | 1 1/2"               | 1 1/2" | 2 1/2" | 3 1/2" |
| 3/4"   | 2"                   | 2"     | 2 1/2" | 3 1/2" |
| 7/8"   | 2"                   | 2 1/2" | 3"     | 3 1/2" |
| 1"   | 2"                   | 2 1/2" | 3"     | 3 1/2" |
| 1 1/4"   | 2"                   | 2 1/2" | 3"     | 4"     |
| 1 1/2"   | 2 1/2"               | 3"     | 3 1/2" | 5"     |
| 2"   | 3"                   | 3 1/2" | 4"     | 5"     |
| 2 1/2"   | 3 1/2"               | 4"     | 4"     | 5"     |
| 3"   | 4"                   | 5"     | 5"     | 6"     |
| 3 1/2"   | 5"                   | 5"     | 6"     | 6"     |
| 4"   | 5"                   | 5"     | 8"     | 8"     |
| 5"   | 6"                   | 6"     | 8"     | 8"     |
| 6"   | 8"                   | 8"     | 10"    | 10"    |

#### WARNING

nVent products shall be installed and used only as indicated in nVent's product instruction sheets and training materials. Instruction sheets are available at [www.erico.com](http://www.erico.com) and from your nVent customer service representative. Improper installation, misuse, misapplication or other failure to completely follow nVent's instructions and warnings may cause product malfunction, property damage, serious bodily injury and death and/or void your warranty.

© 2020 nVent All rights reserved

nVent, nVent CADDY, nVent ERICO, nVent ERIFLEX and nVent LENTON are owned by nVent or its global affiliates.

All other trademarks are the property of their respective owners. nVent reserves the right to change specifications without prior notice.

