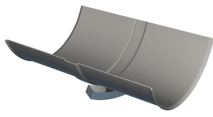
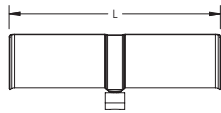
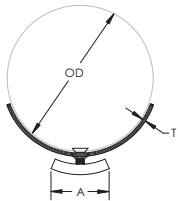


119 Strut Mounted Insulation Shield – 1190250



- Recommended for the suspension of stationary insulated pipe lines
- Flared edges help prevent sharp surfaces from coming into contact with the pipe
- Fits into open side of strut channel



Part Number	1190250
Material	Steel
Finish	Pregalvanized
Shield Size	2 1/2"
Outer Diameter (OD)	2.956"
Length (L)	12"
Thickness (T)	20 GA
A	1 3/4"
Standard Packaging Quantity	100 pc
UPC	78285680074

Insulation Shield Size Chart for Iron Pipe									
Nominal Iron Pipe Size	Insulation Thickness								
	1/2"	3/4"	1"	1 1/2"	2"	2 1/2"	3"	3 1/2"	4"
1/2"	2"	2"	2 1/2"	3 1/2"	5"	6"	8"	-	-
3/4"	2"	2 1/2"	2 1/2"	3 1/2"	5"	6"	8"	-	-
1"	2"	2 1/2"	3"	4"	5"	6"	8"	-	-
1 1/4"	2 1/2"	3"	3"	5"	5"	6"	8"	-	-
1 1/2"	2 1/2"	3"	3 1/2"	5"	6"	8"	8"	-	-
2"	3"	3 1/2"	4"	5"	6"	8"	8"	10"	-
2 1/2"	3 1/2"	4"	5"	6"	8"	8"	10"	10"	-
3"	4"	5"	5"	8"	8"	10"	10"	10"	12"
3 1/2"	5"	5"	6"	8"	8"	10"	10"	12"	12"
4"	5"	6"	6"	8"	8"	10"	10"	12"	12"
5"	6"	8"	8"	8"	10"	10"	12"	12"	-



Insulation Shield Size Chart for Iron Pipe									
Nominal Iron Pipe Size	Insulation Thickness								
	1/2"	3/4"	1"	1 1/2"	2"	2 1/2"	3"	3 1/2"	4"
6"	8"	8"	8"	10"	10"	12"	12"	-	-
8"	10"	10"	10"	12"	12"	-	-	-	-
10"	12"	12"	12"	-	-	-	-	-	-

Insulation Shield Sizing Chart for Copper Tubing				
Nominal Copper Tube Size	Insulation Thickness			
	1/2"	3/4"	1"	1 1/2"
1/2"	1 1/2"	1 1/2"	2 1/2"	3 1/2"
3/4"	2"	2"	2 1/2"	3 1/2"
7/8"	2"	2 1/2"	3"	3 1/2"
1"	2"	2 1/2"	3"	3 1/2"
1 1/4"	2"	2 1/2"	3"	4"
1 1/2"	2 1/2"	3"	3 1/2"	5"
2"	3"	3 1/2"	4"	5"
2 1/2"	3 1/2"	4"	4"	5"
3"	4"	5"	5"	6"
3 1/2"	5"	5"	6"	6"
4"	5"	5"	8"	8"
5"	6"	6"	8"	8"
6"	8"	8"	10"	10"

WARNING

Pentair products shall be installed and used only as indicated in Pentair's product instruction sheets and training materials. Instruction sheets are available at erico.pentair.com and from your Pentair customer service representative. Improper installation, misuse, misapplication or other failure to completely follow Pentair's instructions and warnings may cause product malfunction, property damage, serious bodily injury and death and/or void your warranty.

© 2017 Pentair. All rights reserved.

Pentair, CADDY, CADWELD, CRITEC, ERICO, ERIFLEX, ERITECH and LENTON are owned by Pentair or its global affiliates.

All other trademarks are the property of their respective owners. Pentair reserves the right to change specifications without prior notice.

