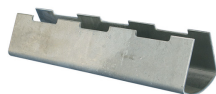
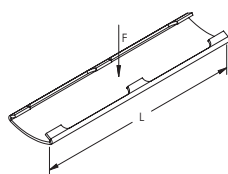


633 Pipe Saddle for 2 1/2" Insulation – 6330800PL



- Designed for high temperature service or where heat losses are to be kept at a minimum and to protect insulation against damage at the point of support
- Conforms with Federal Specification WW-H-171 (Type 40A or 40B), Manufacturers Standardization Society ANSI®/MSS-SP-58 (Type 39)



Part Number	6330800PL
Material	Steel
Finish	Plain
Pipe Size	6" – 8"
Length (L)	12"
Insulation Thickness	2 1/2"
Standard Packaging Quantity	25 pc
UPC	78285637124

Part Number	Pipe Size	Cover Thickness	Size of Pipe Roll for Model #			Center Line of Pipe to Outside of Saddle	Center Line of Pipe to Center Line of Roll for Model #			Static Load
			605, 615	610	617, 619		605, 615	610	617, 619	
6330150PL	1 1/4"	2 7/16"	5"	6"	4" - 6"	3 3/4"	4 3/8"	4 3/8"	4 3/8"	1,200 lb
	1 1/2"	2 13/16"	6"	5"	4" - 6"	3 13/16"	4 7/16"	4 7/16"	4 9/16"	1,800 lb
6330200PL	2"	2 5/8"	6"	8"	4" - 6"	3 15/16"	4 5/8"	4 11/16"	4 11/16"	1,800 lb
6330250PL	2 1/2"	2 7/8"	8"	8"	4" - 6"	4 7/16"	5 5/16"	5 5/16"	5 3/16"	1,800 lb
6330300PL	3"	2 9/16"	8"	8"	4" - 6"	4 11/16"	5 7/16"	5 7/16"	5 5/16"	1,800 lb
6330350PL	3 1/2"	2 3/4"	8"	10"	8" - 10"	4 13/16"	5 3/4"	5 3/4"	5 13/16"	1,800 lb
6330500PL	4"	2 9/16"	8"	10"	8" - 10"	5 1/8"	6 1/16"	6 1/16"	6 3/4"	1,800 lb
	5"	2 9/16"	10"	10"	8" - 10"	5 9/16"	6 1/2"	6 1/2"	6 9/16"	1,800 lb
6330800PL	6"	2 1/2"	10"	12"	8" - 10"	6 3/16"	7 1/8"	7 13/16"	7 1/4"	1,800 lb
	8"	2 11/16"	12"	14"	8" - 10"	7 5/16"	8 3/8"	8 9/16"	8 3/8"	1,800 lb
6331000PL	10"	2 9/16"	14"	16"	12" - 14"	8 3/16"	9 5/8"	9 5/8"	9 3/8"	1,800 lb
6331600PL	16"	2 1/2"	20"	-	16" - 20"	10 7/8"	12 3/8"	-	12 7/8"	7,200 lb



Part Number	Pipe Size	Cover Thickness	Size of Pipe Roll for Model #			Center Line of Pipe to Outside of Saddle	Center Line of Pipe to Center Line of Roll for Model #			Static Load
			605, 615	610	617, 619		605, 615	610	617, 619	
6331800PL	18"	2 1/2"	24"	-	22" - 24"	12"	13 15/16"	-	13 7/16"	7,200 lb
6332000PL	20"	2 1/2"	24"	-	22" - 24"	12 7/8"	14 13/16"	-	14 5/16"	7,200 lb
6332400PL	20"	2 1/2"	30"	-	26" - 30"	14 3/4"	17 5/8"	-	16 9/16"	7,200 lb

Maximum recommended loads are applicable only when the saddle is used on a flat bearing surface and tack welded to the pipe. When a saddle is used with a pipe roll, the maximum load given for the pipe roll applies to the saddle.

Install in accordance with applicable code.

ANSI is a registered trademark of American National Standards Institute.

WARNING

Pentair products shall be installed and used only as indicated in Pentair's product instruction sheets and training materials. Instruction sheets are available at erico.pentair.com and from your Pentair customer service representative. Improper installation, misuse, misapplication or other failure to completely follow Pentair's instructions and warnings may cause product malfunction, property damage, serious bodily injury and death and/or void your warranty.

© 2017 Pentair. All rights reserved.

Pentair, CADDY, CADWELD, CRITEC, ERICO, ERIFLEX, ERITECH and LENTON are owned by Pentair or its global affiliates.

All other trademarks are the property of their respective owners. Pentair reserves the right to change specifications without prior notice.

