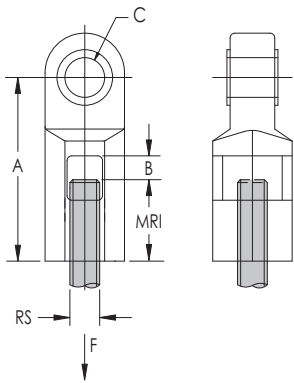


26 Beam Clamp Extension Piece – 0260062PL



- Accessory that may attach to the side of a structural member or to a beam clamp
- Extension may be used in conjunction with Model #360



Part Number	0260062PL
Material	Steel
Finish	Plain
Rod Size (RS)	5/8"
A	2 7/16"
B	5/8"
C	1/2"
MRI	7/8"
Static Load (F)	1,550 lb
Standard Packaging Quantity	50 pc
UPC	78285635953

WARNING

Pentair products shall be installed and used only as indicated in Pentair's product instruction sheets and training materials. Instruction sheets are available at erico.pentair.com and from your Pentair customer service representative. Improper installation, misuse, misapplication or other failure to completely follow Pentair's instructions and warnings may cause product malfunction, property damage, serious bodily injury and death and/or void your warranty.

© 2017 Pentair All rights reserved

Pentair, CADDY, CADWELD, CRITEC, ERICO, ERIFLEX, ERITECH and LENTON are owned by Pentair or its global affiliates.

All other trademarks are the property of their respective owners. Pentair reserves the right to change specifications without prior notice.

