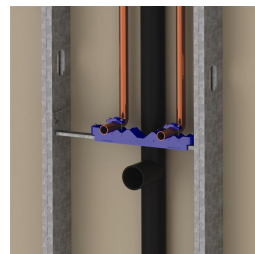
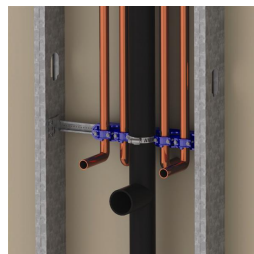
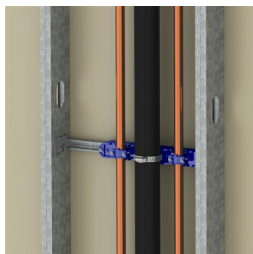
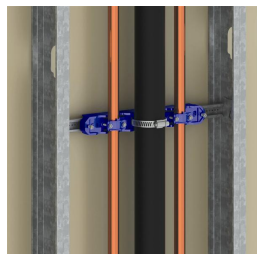
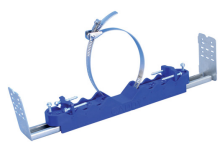
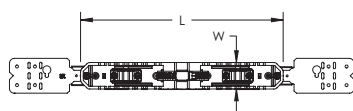
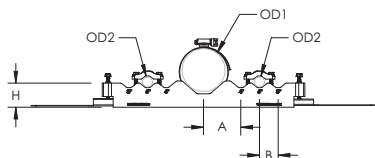


Telescoping Plumbing Prefab Bracket – PFB1624



- Out-of-the-box in-wall solution for supporting supply and waste lines
- Includes an adjustable telescoping screw gun bracket that provides a mid-span support and accommodates non-standard stud spacing
- Multiple pilot holes in telescoping bracket
- Can be mounted to face or inside of stud
- Modular design can accommodate multiple pipe sizes of supply and waste lines
- Marked for easy identification of supply line offset
- Can mount pipe in all vertical or horizontal orientations
- Plastic bracket housing is non-corrosive and compatible with all varieties of pipe
- Additional Plumbing Prefab Bracket Clamps (PFBC) can be purchased separately for multiple supply line runs



Part Number	PFB1624
Material	Steel Acrylonitrile Butadiene Styrene Stainless Steel 410 (EN 1.4006)
Finish	Pregalvanized Electrogalvanized
Static Load Safety Factor	3:1
Stud Spacing	15 3/4" – 25"
Supply Line Offset	4" 6" 8"
Outer Diameter 1 (OD1)	1 1/8" – 4 1/2"
Outer Diameter 2 (OD2)	0.375" – 1.050"
Height (H)	1.3"
Length (L)	10.86"
Width (W)	1.42"
A	2"
B	1"
Standard Packaging Quantity	20 pc
UPC	78285684832
EAN-13	8711893147384



WARNING

Pentair products shall be installed and used only as indicated in Pentair's product instruction sheets and training materials. Instruction sheets are available at erico.pentair.com and from your Pentair customer service representative. Improper installation, misuse, misapplication or other failure to completely follow Pentair's instructions and warnings may cause product malfunction, property damage, serious bodily injury and death and/or void your warranty.

© 2017 Pentair. All rights reserved.

Pentair, CADDY, CADWELD, CRITEC, ERICO, ERIFLEX, ERITECH and LENTON are owned by Pentair or its global affiliates.

All other trademarks are the property of their respective owners. Pentair reserves the right to change specifications without prior notice.

