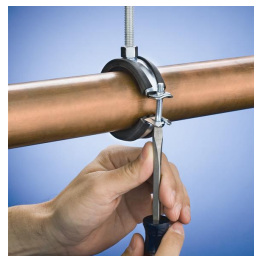
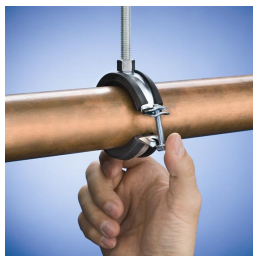
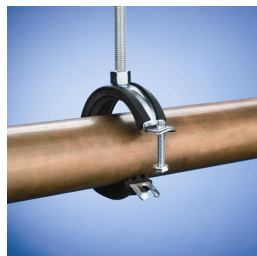
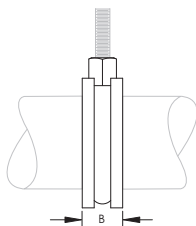
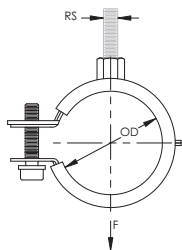


CADDY SUPERFIX 454 Standard Duty – 454001



- Recommended for the suspension of stationary non-insulated pipe lines
- Easy-to-close clamp for steel pipe and copper tube
- Unique hinged design eliminates the need to disassemble the clamp prior to installation
- Clamp can be closed with one hand, without ever turning a screw
- All-steel design of the closing mechanism retains strength even when exposed to heat
- Comes with a welded 3/8" cap nut, allowing easy attachment to threaded rod
- Conforms with Manufacturers Standardization Society (MSS) SP-58 (Type 12)
- Category II noise reduction according to DIN EN ISO 3822-1
- Compliant for sound insulation design according to DIN 4109
- Reaction-to-fire classification is "E" in compliance with DIN EN 13501-1:2010-01



Part Number	454001
Material	Steel EPDM-SBR Rubber
Finish	Electrogalvanized
Temperature	-58 to 230 °F
Outer Diameter (OD)	0.472" – 0.551"
Pipe Size	1/4"
Copper Tube Size	3/8"
Rod Size (RS)	3/8"
B	29/32"
Static Load (F)	180 lb
Standard Packaging Quantity	100 pc
UPC	78285659043

WARNING

Pentair products shall be installed and used only as indicated in Pentair's product instruction sheets and training materials. Instruction sheets are available at erico.pentair.com and from your Pentair customer service representative. Improper installation, misuse, misapplication or other failure to completely follow Pentair's instructions and warnings may cause product malfunction, property damage, serious bodily injury and death and/or void your warranty.

© 2017 Pentair. All rights reserved.

Pentair, CADDY, CADWELD, CRITEC, ERICO, ERIFLEX, ERITECH and LENTON are owned by Pentair or its global affiliates.

All other trademarks are the property of their respective owners. Pentair reserves the right to change specifications without prior notice.

