

Steel square boxes

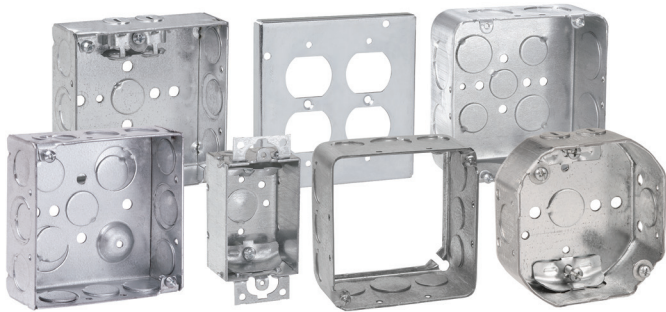
4" SQUARE OUTLET BOXES & COVERS

Applications:

- For use with conduit
- Available in red for fire alarm applications

Features:

- Ideal for exposed work applications, providing an easy method for the installation of electrical devices (switches, receptacles, fans, lights, etc.)
- Raised ground screw location in the welded boxes saves time in installation
- Available with pre-installed ground screws and pigtails for increased labor savings
- Knockouts are suitable for use without a bonding jumper in circuits above or below 250 volts
- Available in two depths for differing cubic capacity requirements
- Welded or drawn construction to match customer preference
- Extensive cover offering to meet various customer applications and needs



Certifications and compliances:

- UL Listed

4" SQUARE OUTLET BOXES – 18.0 CUBIC INCH CAPACITY

1 1/4" DEEP – FOR CONDUIT

UL LISTED



TP408

Steel boxes

Cat. #	Bracket	Description	Grounding method	Knockouts		Unit qty.	Wt. lbs. per 100
				Sides	Bottom		
TP408	-	Drawn	Tapped hole	12 – 1/2"	5 – 1/2"	50	61

Steel square boxes

4" SQUARE OUTLET BOXES – 22.0 CUBIC INCH CAPACITY (WELDED) 21.0 CUBIC INCH CAPACITY (DRAWN)

1 1/2" DEEP – FOR CONDUIT

UL LISTED



TP404/TP404PF



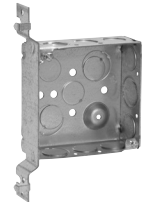
TP404SSB



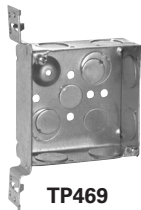
TP404MSB



TP404RED



TP425



TP469



TP830^B



TP405



TP412
TP839^B



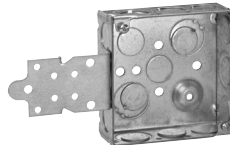
TP410



TP414RED



TP414



TP418



TP423RED



TP467MSB

Cat. #	Metal stud sizes	Bracket	Description	Grounding method	Knockouts		Unit qty.	Wt. lbs. per 100
					Sides	Bottom		
TP404	-	-	Welded	Ground bump	8 - 1/2", 4 - 1/2" + 3/4" E	2 - 1/2", 2 - 1/2" + 3/4" E	50	72
TP404G ^F	-	-	Welded	Ground bump with screw	8 - 1/2", 4 - 1/2" + 3/4" E	2 - 1/2", 2 - 1/2" + 3/4" E	50	72
TP404MSB	-	MSB	Welded	Ground bump	8 - 1/2", 4 - 1/2" + 3/4" E	2 - 1/2", 2 - 1/2" + 3/4" E	25	83
TP404RED	-	-	Welded	Ground bump	8 - 1/2", 4 - 1/2" + 3/4" E	2 - 1/2", 2 - 1/2" + 3/4" E	50	72
TP404REDMSB	-	MSB	Welded	Ground bump	8 - 1/2", 4 - 1/2" + 3/4" E	2 - 1/2", 2 - 1/2" + 3/4" E	25	83
TP404PF ^{C E}	-	-	Welded	Ground bump	8 - 1/2", 4 - 1/2" + 3/4" E	2 - 1/2", 2 - 1/2" + 3/4" E	50	72
TP404SSB	-	SSB	Welded	Ground bump	8 - 1/2", 4 - 1/2" + 3/4" E	2 - 1/2", 2 - 1/2" + 3/4" E	50	83
TP425	All	"VP"	Welded	Ground bump	6 - 1/2", 3 - 1/2" + 3/4" E	2 - 1/2", 2 - 1/2" + 3/4" E	25	82
TP425G ^F	All	"VP"	Welded	Ground bump with screw	6 - 1/2", 3 - 1/2" + 3/4" E	2 - 1/2", 2 - 1/2" + 3/4" E	25	82
TP423	All	"VMS"	Welded	Ground bump	6 - 1/2", 3 - 1/2" + 3/4" E	2 - 1/2", 2 - 1/2" + 3/4" E	25	81
TP423G ^F	All	"VMS"	Welded	Ground bump with screw	6 - 1/2", 3 - 1/2" + 3/4" E	2 - 1/2", 2 - 1/2" + 3/4" E	25	81
TP423RED	All	"VMS"	Welded	Ground bump	6 - 1/2", 3 - 1/2" + 3/4" E	2 - 1/2", 2 - 1/2" + 3/4" E	25	81
TP405	-	-	Drawn	Tapped hole	4 - 1/2", 6 - 1/2" + 3/4" C	3 - 1/2", 2 - 3/4"	50	67
TP410	-	-	Drawn	Tapped hole	12 - 1/2"	5 - 1/2"	50	67
TP412	-	-	Drawn	Tapped hole	8 - 3/4"	3 - 1/2", 2 - 3/4"	50	67
TP414	-	-	Drawn	Ground bump	8 - 1/2", 4 - 3/4"	2 - 1/2", 2 - 3/4"	50	67
TP414G ^F	-	-	Drawn	Ground bump with screw	8 - 1/2", 4 - 3/4"	3 - 1/2", 2 - 3/4"	50	67
TP414RED	-	-	Drawn	Ground bump	8 - 1/2", 4 - 3/4"	3 - 1/2", 2 - 3/4"	50	67
TP418	-	"F", set flush	Welded	Ground bump	6 - 1/2", 3 - 1/2" + 3/4" E	2 - 1/2", 2 - 1/2" + 3/4" E	25	84
TP467	-	-	Welded	Ground bump	8 - 3/4"	2 - 1/2", 2 - 1/2" + 3/4" E	50	72
TP467MSB	-	MSB	Welded	Ground bump	8 - 3/4"	2 - 1/2", 2 - 1/2" + 3/4" E	25	78
TP469	All	"VMS"	Welded	Ground bump	6 - 3/4"	2 - 1/2", 2 - 1/2" + 3/4" E	25	81
Air Plenum								
TP830 ^B	-	-	Drawn	Tapped screw	8 - 1/2", 4 - 3/4"	3 - 1/2", 2 - 3/4"	50	72
TP839 ^B	-	-	Drawn	Tapped screw	8 - 3/4"	3 - 1/2", 2 - 3/4"	50	72

^B For air plenum (no mounting holes) - not UL Listed.

^C cUL Listed.

^E TP catalog numbers ending in PF include ground screw with pigtail lead.

^F CSA certified.

Steel square boxes

4" SQUARE OUTLET BOXES – 22.0 CUBIC INCH CAPACITY

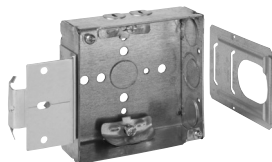
1½" DEEP

FOR NON-METALLIC CABLE – CLAMPS IN EACH END

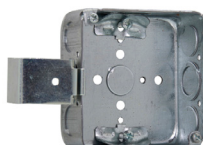
UL LISTED



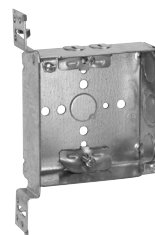
TP444



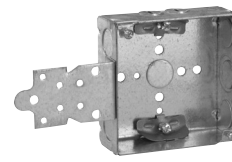
TP444MSB



TP444SSB



TP449



TP446

Cat. #	Bracket	Description	Knockouts		Unit qty.	Wt. lbs. per 100
			Sides	Bottom		
TP444	-	Welded	4 - cable, 4 - ½", 2 - ½" + ¾" E	1 - ½"	50	77
TP444MSB	MSB	Welded	4 - cable, 4 - ½", 2 - ½" + ¾" E	1 - ½"	25	81
TP444SSB	SSB	Welded	4 - cable, 4 - ½", 2 - ½" + ¾" E	1 - ½"	50	88
TP446	"F", set flush	Welded	4 - cable, 2 - ½", 1 - ½" + ¾" E	1 - ½"	25	88
TP449	"VMS"	Welded	4 - cable, 2 - ½", 1 - ½" + ¾" E	1 - ½"	25	85
TP449G [Ⓕ]	"VMS"	Welded	4 - Cable, 2 - ½", 1 - ½" + ¾" E	1 - ½"	25	85

[Ⓕ] CSA certified. G indicates ground screw installed.

4" SQUARE OUTLET BOXES – 22.0 CUBIC INCH CAPACITY

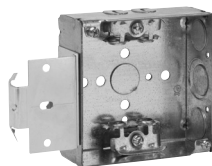
1½" DEEP

FOR ARMORED & METAL-CLAD (MCI) CABLE & HCF CABLE – CLAMPS IN EACH END

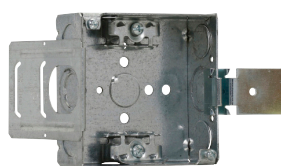
UL LISTED



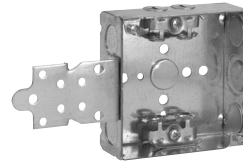
TP454



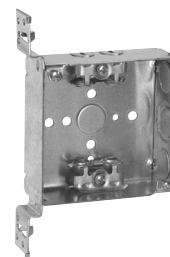
TP454MSB



TP454SSB



TP456



TP459

Cat. #	Bracket	Description	Knockouts		Unit qty.	Wt. lbs. per 100
			Sides	Bottom		
TP459	"VMS"	Welded	4 - cable, 2 - ½", 1 - ½" + ¾" E	1 - ½"	25	89
TP454 [Ⓐ]	-	Welded	4 - cable, 4 - ½", 2 - ½" + ¾" E	1 - ½"	50	81
TP454MSB [Ⓐ]	MSB	Welded	4 - cable, 4 - ½", 2 - ½" + ¾" E	1 - ½"	25	91
TP454G [Ⓐ] [Ⓕ]	-	Welded	4 - Cable, 4 - ½", 2 - ½" + ¾" E	1 - ½"	50	81
TP454PF [Ⓔ]	-	Welded	4 - cable, 4 - ½", 2 - ½" + ¾" E	1 - ½"	50	81
TP454SSB [Ⓐ]	SSB	Welded	4 - cable, 4 - ½", 2 - ½" + ¾" E	1 - ½"	25	82
TP456 [Ⓐ]	"F", set flush	Welded	4 - cable, 2 - ½", 1 - ½" + ¾" E	1 - ½"	25	92
TP456PF [Ⓔ]	"F", set flush	Welded	4 - cable, 2 - ½", 1 - ½" + ¾" E	1 - ½"	25	92

[Ⓐ] UL approved for use with aluminum interlocking grounding metal-clad cable, Type MCIA (Southwire MCAP™).

MCAP™ is a registered trademark of Southwire Company.

[Ⓔ] TP catalog numbers ending in PF include ground screw with pigtail lead.

[Ⓕ] CSA certified. G indicates ground screw installed.

Steel square boxes

4" SQUARE OUTLET BOXES – 30.3 CUBIC INCH CAPACITY

2 1/8" DEEP – FOR CONDUIT

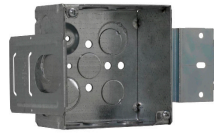
UL LISTED



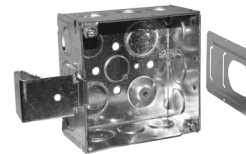
TP403/TP403PF



TP403BH



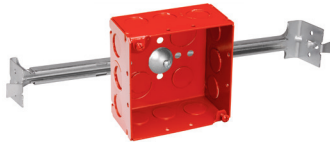
TP403MSB



TP403SSB



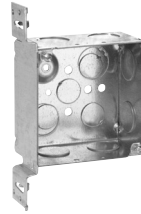
TP403RED



TP403REDBH



TP432



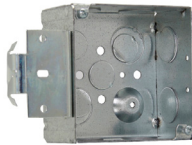
TP432VMS



TP434



TP438/TP831



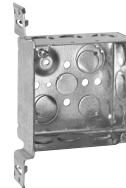
TP432MSB



TP434RED



TP451RED



TP451

Cat. #	Bracket	Description	Grounding method	Knockouts		16" Fixture weight (lbs.)	24" Fixture weight (lbs.)	Unit qty.	Wt. lbs. per 100
				Sides	Bottom				
TP403	-	Welded	Ground bump	8 - 1/2", 4 - 1/2" + 3/4" E	2 - 1/2", 2 - 1/2" + 3/4" E	-	-	25	84
TP403BH	-	Welded	Ground bump	8 - 1/2", 4 - 1/2" + 3/4" E	2 - 1/2", 2 - 1/2" + 3/4" E	50	50	25	84
TP403G	-	Welded	Grnd bump w/screw	8 - 1/2", 4 - 1/2" + 3/4" E	2 - 1/2", 2 - 1/2" + 3/4" E	-	-	25	84
TP403MSB	MSB	Welded	Ground bump	8 - 1/2", 4 - 1/2" + 3/4" E	2 - 1/2", 2 - 1/2" + 3/4" E	-	-	25	95
TP403RED	-	Welded	Ground bump	8 - 1/2", 4 - 1/2" + 3/4" E	2 - 1/2", 2 - 1/2" + 3/4" E	-	-	25	84
TP403REDBH	-	Welded	Ground bump	8 - 1/2", 4 - 1/2" + 3/4" E	2 - 1/2", 2 - 1/2" + 3/4" E	50	50	25	84
TP403REDMSB	MSB	Welded	Ground bump	8 - 1/2", 4 - 1/2" + 3/4" E	2 - 1/2", 2 - 1/2" + 3/4" E	-	-	25	95
TP403PF	-	Welded	Ground bump	8 - 1/2", 4 - 1/2" + 3/4" E	2 - 1/2", 2 - 1/2" + 3/4" E	-	-	25	84
TP403SSB	SSB	Welded	Ground bump	8 - 1/2", 4 - 1/2" + 3/4" E	2 - 1/2", 2 - 1/2" + 3/4" E	-	-	25	95
TP432	-	Welded	Ground bump	8 - 3/4"	2 - 1/2", 2 - 1/2" + 3/4" E	-	-	25	84
TP432G	-	Welded	Grnd bump w/screw	8 - 3/4"	2 - 1/2", 2 - 1/2" + 3/4" E	-	-	25	84
TP432RED	-	Welded	Ground bump	8 - 3/4"	2 - 1/2", 2 - 1/2" + 3/4" E	-	-	25	84
TP432MSB	MSB	Welded	Ground bump	8 - 3/4"	2 - 1/2", 2 - 1/2" + 3/4" E	-	-	25	95
TP432REDMSB	MSB	Welded	Ground bump	8 - 3/4"	2 - 1/2", 2 - 1/2" + 3/4" E	-	-	25	95
TP432VMS	"VMS"	Welded	Ground bump	6 - 3/4"	2 - 1/2", 2 - 1/2" + 3/4" E	-	-	25	99
TP436	-	Welded	Ground bump	8 - 1"	2 - 1/2", 2 - 1/2" + 3/4" E	-	-	25	84
TP436G	-	Welded	Grnd bump w/screw	8 - 1"	2 - 1/2", 2 - 1/2" + 3/4" E	-	-	25	84
TP436MSB	MSB	Welded	Ground bump	8 - 1"	2 - 1/2", 2 - 1/2" + 3/4" E	-	-	25	95
TP434	-	Drawn	Ground bump	8 - 1/2", 4 - 3/4"	3 - 1/2", 2 - 3/4"	-	-	25	84
TP434G	-	Drawn	Grnd bump w/screw	8 - 1/2", 4 - 3/4"	3 - 1/2", 2 - 3/4"	-	-	25	84
TP434RED	-	Drawn	Ground bump	8 - 1/2", 4 - 3/4"	3 - 1/2", 2 - 3/4"	-	-	25	84
TP438	-	Drawn	Ground bump	4 - 1/2", 6 - 1/2" + 3/4" C	3 - 1/2", 2 - 3/4"	-	-	25	84
TP438G	-	Drawn	Grnd bump w/screw	4 - 1/2", 6 - 1/2" + 3/4" C	3 - 1/2", 2 - 3/4"	-	-	25	84
TP438PF	-	Drawn	Ground bump	4 - 1/2", 6 - 1/2" + 3/4" C	3 - 1/2", 2 - 3/4"	-	-	25	84
TP451	"VMS"	Welded	Ground bump	6 - 1/2", 3 - 1/2" + 3/4" E	2 - 1/2", 2 - 1/2" + 3/4" E	-	-	25	96
TP451G	"VMS"	Welded	Grnd bump w/screw	6 - 1/2", 3 - 1/2" + 3/4" E	2 - 1/2", 2 - 1/2" + 3/4" E	-	-	25	96
TP451PF	"VMS"	Welded	Ground bump	6 - 1/2", 3 - 1/2" + 3/4" E	2 - 1/2", 2 - 1/2" + 3/4" E	-	-	25	96
TP451RED	"VMS"	Welded	Ground bump	6 - 1/2", 3 - 1/2" + 3/4" E	2 - 1/2", 2 - 1/2" + 3/4" E	-	-	25	96
TP437	"VP"	Welded	Ground bump	6 - 1/2", 3 - 1/2" + 3/4" E	2 - 1/2", 2 - 1/2" + 3/4" E	-	-	25	98
Air Plenum									
TP831	-	Drawn	Ground bump	8 - 1/2", 4 - 3/4"	3 - 1/2", 2 - 3/4"	-	-	25	90

^B For Air Plenum (no mounting holes) - not UL Listed.

^C UL Listed.

^E TP catalog numbers ending in PF include ground screw with pigtail lead.

^F CSA certified.

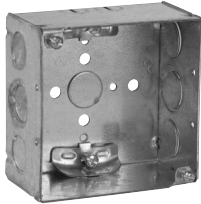
Steel square boxes

4" SQUARE OUTLET BOXES – 30.3 CUBIC INCH CAPACITY

2 1/8" DEEP

FOR NON-METALLIC CABLE – CLAMPS IN EACH END

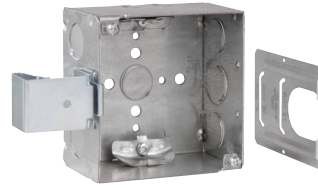
UL LISTED



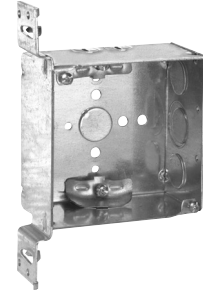
TP450



TP450MSB



TP450SSB



TP452

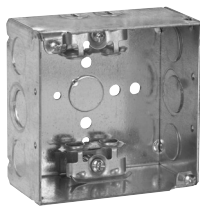
Cat. #	Bracket	Description	Knockouts		Unit qty.	Wt. lbs. per 100
			Sides	Bottom		
TP450	-	Welded	4 - cable, 4 - 1/2", 2 - 1/2" + 3/4" E	1 - 1/2"	25	90
TP450MSB	MSB	Welded	4 - cable, 4 - 1/2", 2 - 1/2" + 3/4" E	1 - 1/2"	25	101
TP450SSB	SSB	Welded	4 - cable, 4 - 1/2", 2 - 1/2" + 3/4" E	1 - 1/2"	25	101
TP452	"VMS"	Welded	4 - cable, 2 - 1/2", 1 - 1/2" + 3/4" E	1 - 1/2"	25	104

4" SQUARE OUTLET BOXES – 30.3 CUBIC INCH CAPACITY

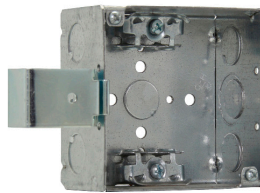
2 1/8" DEEP

FOR ARMORED & METAL-CLAD (MCI) CABLE & HCF CABLE – CLAMPS IN EACH END

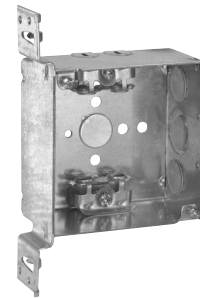
UL LISTED



TP431



TP431SSB



TP440

Cat. #	Metal stud sizes	Bracket	Description	Knockouts		Unit qty.	Wt. lbs. per 100
				Sides	Bottom		
TP431 ^A	-	-	Welded	4 - cable, 4 - 1/2", 2 - 1/2" & 3/4" E	1 - 1/2"	25	91
TP431G ^{A F}	-	-	Welded	4 - cable, 4 - 1/2", 2 - 1/2" & 3/4" E	1 - 1/2"	25	91
TP431PF ^E	-	-	Welded	4 - cable, 4 - 1/2", 2 - 1/2" & 3/4" E	1 - 1/2"	25	91
TP431MSB ^A	-	MSB	Welded	4 - cable, 4 - 1/2", 2 - 1/2" & 3/4" E	1 - 1/2"	25	91
TP431SSB ^A	-	SSB	Welded	4 - cable, 4 - 1/2", 2 - 1/2" & 3/4" E	1 - 1/2"	25	102
TP440 ^A	All	"VMS"	Welded	4 - cable, 2 - 1/2", 1 - 1/2" & 3/4" E	1 - 1/2"	25	103
TP440G ^{A F}	All	"VMS"	Welded	4 - cable, 2 - 1/2", 1 - 1/2" & 3/4" E	1 - 1/2"	25	103

^A UL approved for use with aluminum interlocking grounding metal-clad cable, Type MCIA (Southwire MCAP™).

MCAP™ is a registered trademark of Southwire Company.

^E TP catalog numbers ending in PF include ground screw with pigtail lead.

^F CSA certified. G indicates ground screw installed.

Steel square boxes

4" SQUARE TWO DEVICE BOXES – 30.3 CUBIC INCH CAPACITY

2 1/8" DEEP – FOR CONDUIT

UL LISTED



TP391



TP395

Cat. #	Bracket	Description	Grounding method	Knockouts		Unit qty.	Wt. lbs. per 100
				Sides	Bottom		
TP391	"VS", set 7/8"	Drawn	Ground bump	6 - 1/2", 3 - 3/4"	3 - 1/2", 2 - 3/4"	25	95
TP395	-	Drawn	Ground bump	8 - 1/2", 4 - 3/4"	3 - 1/2", 2 - 3/4"	25	84

4" SQUARE OUTLET BOXES – 50.0 CUBIC INCH CAPACITY

3 1/2" DEEP – FOR CONDUIT

UL LISTED, FILE NO. E-15022

Applications:

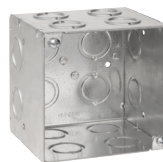
- 4" square, 3 1/2" deep outlet boxes are ideal for applications requiring increased capacity, including the installation of speaker boxes, fire alarms, strobes, security cameras and other oversized devices
- For use with rigid/IMC and EMT conduit



TP411



TP411RED



TP413



TP413RED

Cat. #	Bracket	Description	Grounding method	Knockouts		Unit qty.	Wt. lbs. per 100
				Sides	Bottom		
TP411 [Ⓢ]	"S"	Welded	Tapped hole	10 - 1/2" + 3/4" C	4 - 1/2" + 3/4" C	10	138
TP411RED [Ⓢ]	"S"	Welded	Tapped hole	10 - 1/2" + 3/4" C	4 - 1/2" + 3/4" C	10	145
TP413 [Ⓢ]	-	Welded	Ground bump	8 - 1/2" + 3/4" C, 4 - 3/4", 4 - 1"	2 - 1/2" + 2 - 3/4"	10	113
TP413RED [Ⓢ]	-	Welded	Ground bump	8 - 1/2" + 3/4" C, 4 - 3/4", 4 - 1"	2 - 1/2" + 2 - 3/4"	20	120

[Ⓢ]cUL Listed.

Steel boxes