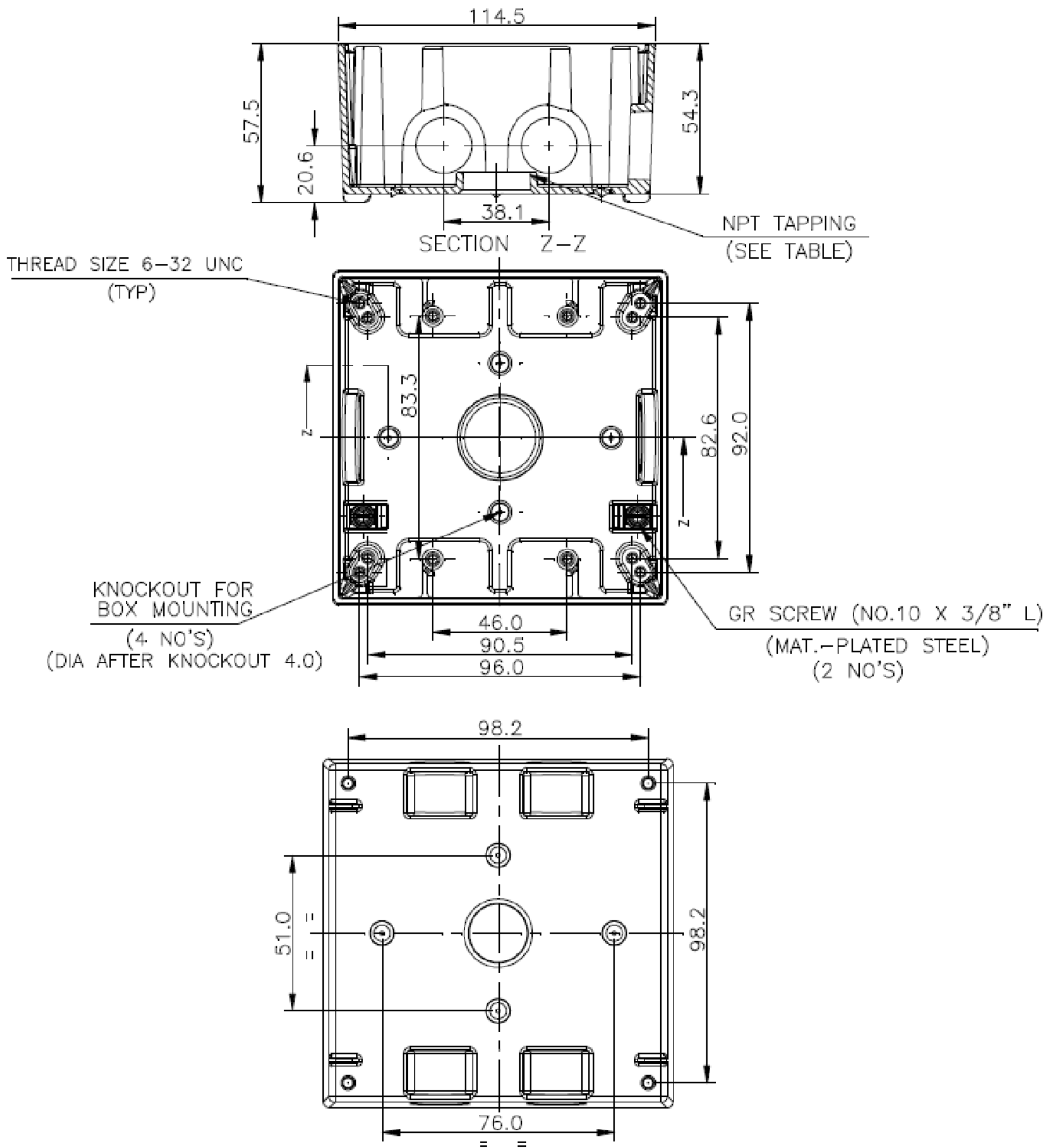


ZONE	NO.	DESCRIPTION	DATE	APPRD.	LTR. NO.
	1	SUBMIT FOR RELEASE	5/7/2020	PW	

2 GANG 2 DP WP RECTANGULAR BOX		MIN. VOLUME (CU.IN.)
TP7118	1/2" 5HL - GREY	31.0
TP7125	1/2" 7HL - GREY	31.0
TP7122	3/4" 5HL - GREY	31.0
TP7128	3/4" 7HL - GREY	31.0




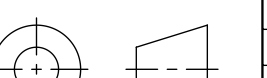
ACCESSORIES:

SR.NO.	DESCRIPTION	QTY
1	CLOSER PLUG	2
2	MOUNTING LADER (ML)	2
3	SCREW (CST-8-025)	2

NOTES:

- CERTIFICATION/LISTING:
- ENVIRONMENTAL RATING:  
-WEATHERPROOF  
-WET LOCATION



THIS IS PROPERTY OF EATON AND CONTAINS CONFIDENTIAL AND TRADE SECRET INFORMATION. POSSESSION DOES NOT CONVEY ANY RIGHTS TO LOAN, SELL OR DISCLOSE SAID INFORMATION. REPRODUCTION OR USE FOR ANY PURPOSE OTHER THAN WHICH IT WAS SUPPLIED MAY NOT BE MADE WITHOUT EXPRESS WRITTEN PERMISSION OF EATON. THIS DRAWING IS ON LOAN AND IS TO BE RETURNED UPON REQUEST.		TOLERANCES UNLESS OTHERWISE SPECIFIED		UNLESS OTHERWISE SPECIFIED, ALL PRIMARY DIMENSIONS ARE IN INCHES. DIMENSIONS IN [ ] ARE IN MILLIMETERS.					
		in.		mm					
		.X	± .1	± .3	ORIGINAL DATE	05/4/2020			
		.XX	± .01	± .13	REDRAWN DATE				
		.XXX	± .005	± .000	DRAWN BY	TAK			
MATERIAL:		ANGLES		± 1.5°	± 1.5°	CHECKED BY			
FINISH:		DIM AND TOL IN ACCORDANCE WITH ASME Y14.5 2009.				APPROVED BY			
		THIRD ANGLE PROJECTION				APPROVED BY			
						SCALE	1:1		
NEXT ASSY.		USED ON				WT.			
APPLICATION						SHEET	1 OF 1		