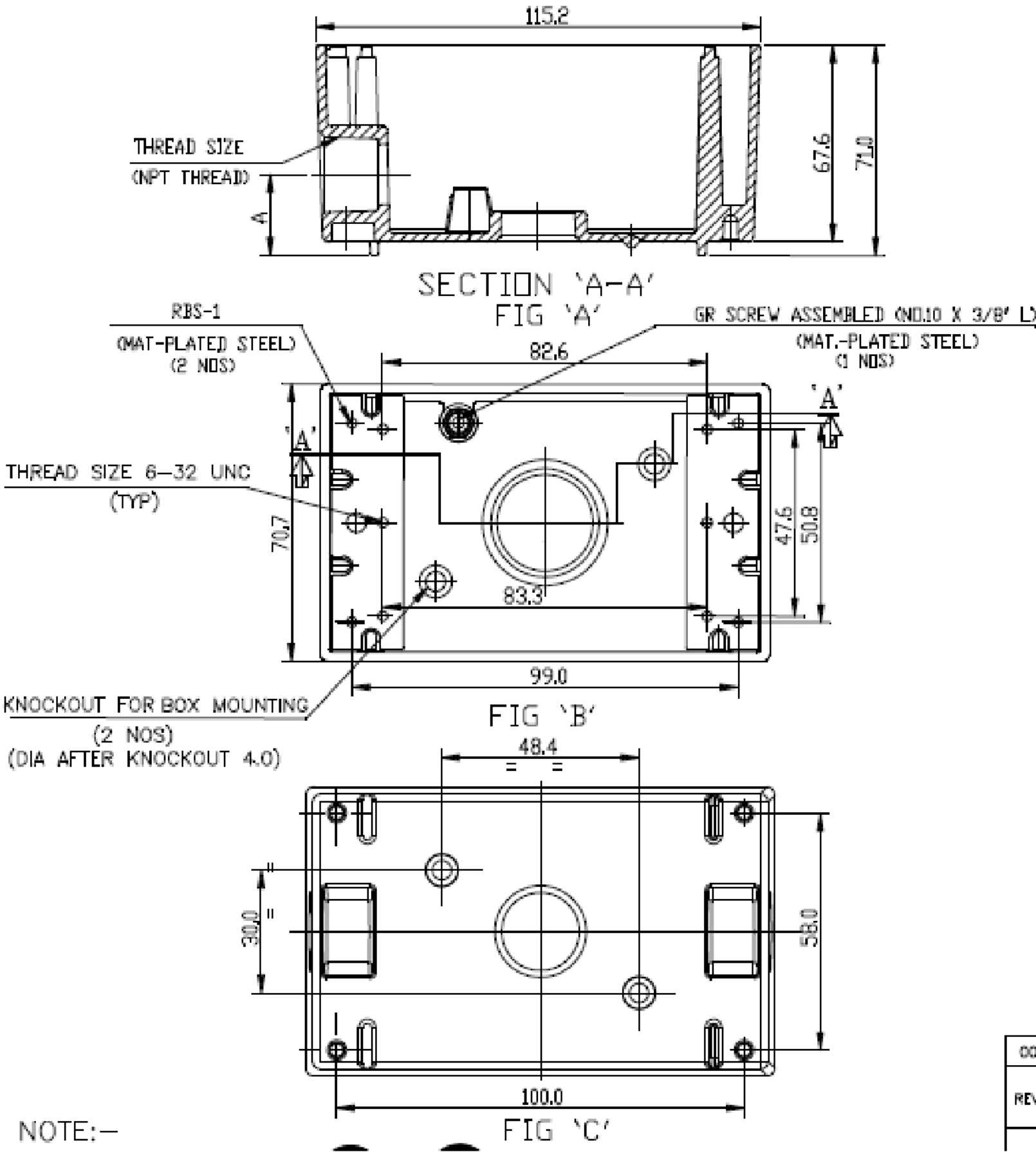


ZONE	NO.	DESCRIPTION	DATE	APPRD.	LTR. NO.
	1	SUBMIT FOR RELEASE	5/7/2020	PW	

SINGLE GANG DP WP BOX		MIN. VOLUME (CU.IN.)	A
TP7074	1/2" 3HL - GRY	25.5	26.0
TP7075	1/2" 3HL - WHT	25.5	26.0
TP7076	1/2" 3HL - AR BZ	25.5	26.0
TP7078	3/4" 3HL - GRY	25.5	26.0
TP7082	1" 3HL - GRY	23.0	26.0



ACCESSORIES:

SR.NO.	DESCRIPTION	QTY
1	CLOSER PLUG	2
2	MOUNTING LUG (ML)	2
3	SCREW (CST-8-025)	2

NOTES:

- 1. CERTIFICATION/LISTING:  
- 2. ENVIRONMENTAL RATING:
-WEATHERPROOF
-WET LOCATION

THIS IS PROPERTY OF EATON AND CONTAINS CONFIDENTIAL AND TRADE SECRET INFORMATION. POSSESSION DOES NOT CONVEY ANY RIGHTS TO LOAN, SELL OR DISCLOSE SAID INFORMATION. REPRODUCTION OR USE FOR ANY PURPOSE OTHER THAN WHICH IT WAS SUPPLIED MAY NOT BE MADE WITHOUT EXPRESS WRITTEN PERMISSION OF EATON. THIS DRAWING IS ON LOAN AND IS TO BE RETURNED UPON REQUEST.

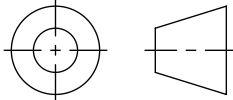
TOLERANCES UNLESS OTHERWISE SPECIFIED	
.X	± .1
.XX	± .01
.XXX	± .005
ANGLES	± 1.5°

UNLESS OTHERWISE SPECIFIED, ALL PRIMARY DIMENSIONS ARE IN INCHES. DIMENSIONS IN [] ARE IN MILLIMETERS.

ORIGINAL DATE	05/4/2020
REDRAWN DATE	
DRAWN BY	TAK
CHECKED BY	
APPROVED BY	
APPROVED BY	

MATERIAL:	
FINISH:	
NEXT ASSY.	USED ON
APPLICATION	

DIM AND TOL IN ACCORDANCE WITH ASME Y14.5 2009.	
THIRD ANGLE PROJECTION	



TITLE	
1 GANG DP WP BOX 1/2"-1" W/3 HOLES	
FIRST MADE FOR WEATHERPROOF	
SIZE	CODE IDENT. NO.
C	TP7
SCALE 1:1	WT.
SHEET 1 OF 1	

EATON CROUSE-HINDS SERIES	
REV. 1	