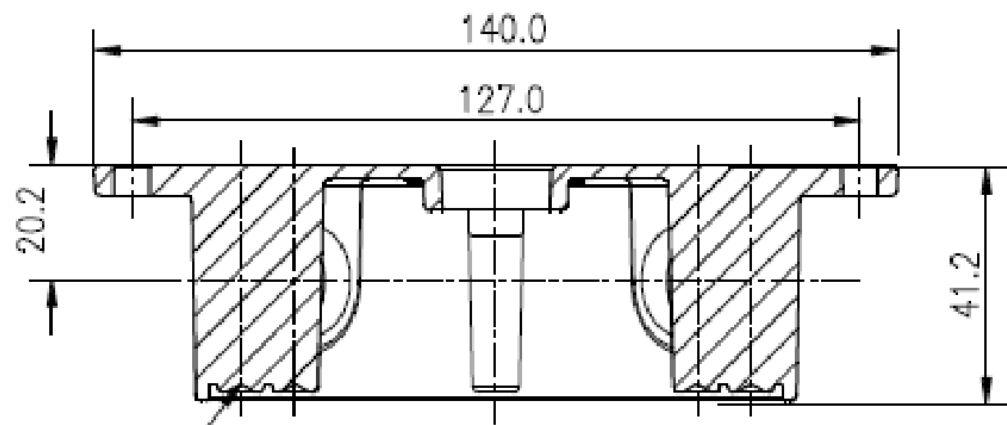
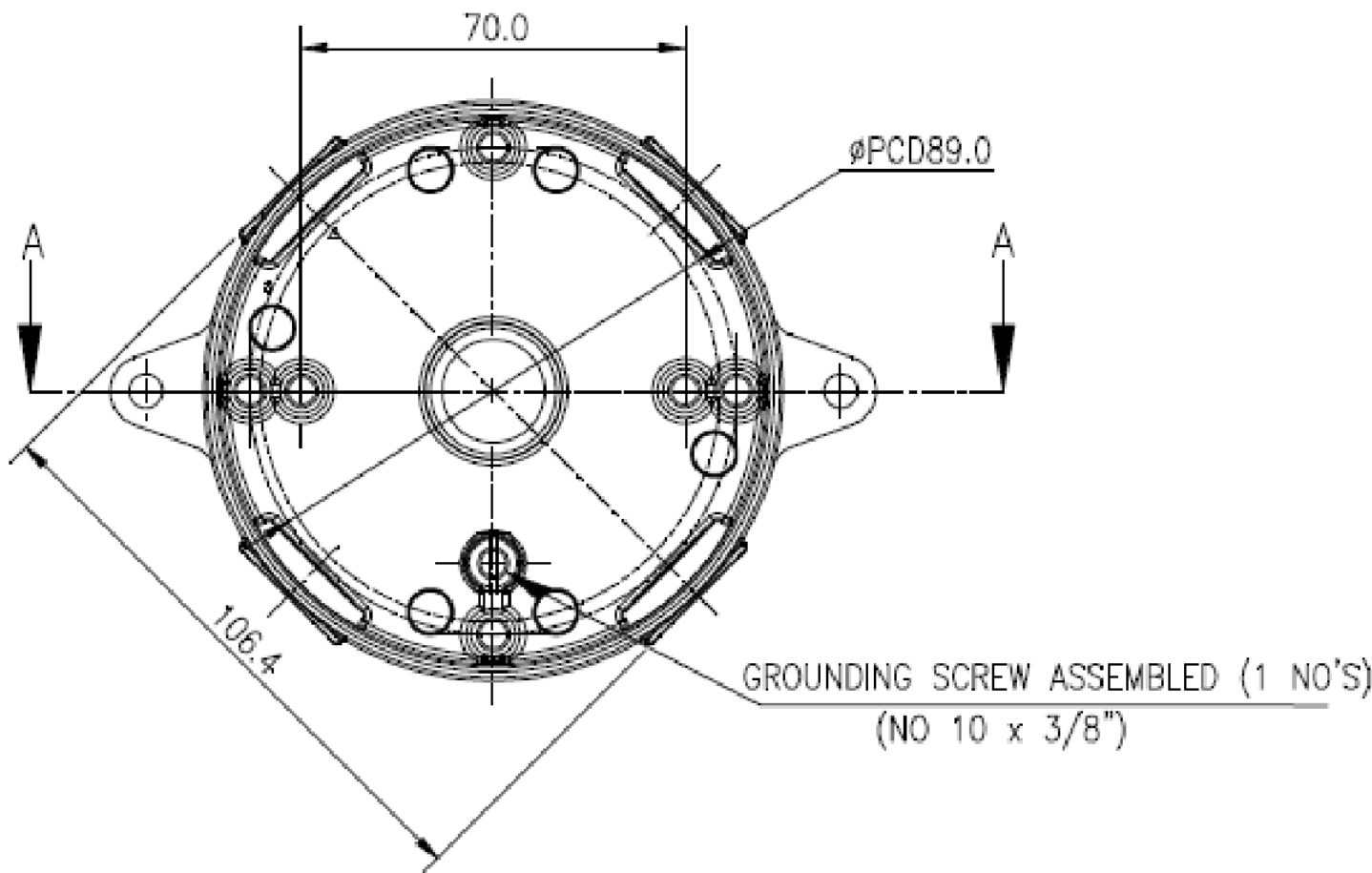


ZONE	NO.	DESCRIPTION	DATE	APPRD.	LTR. NO.
	1	SUBMIT FOR RELEASE	5/7/2020	PW	

4" ROUND 1-1/2" DP WP OUTLET BOX		MIN. VOLUME (CU.IN.)
TP7149	1/2" 4HL - BRONZE	16.0
TP7146	1/2" 4HL - GREY	16.0
TP7148	1/2" 4HL - WHITE	16.0
TP7150	3/4" 4HL - GREY	16.0
TP7153	3/4" 4HL - BRONZE	16.0
TP7154	3/4" 4HL - WHITE	16.0



ACCESSORIES:

SR.No.	DESCRIPTION	QTY
1	CLOSURE PLUG	4
2	SCREW (No. 10 x 1/2"L)	2

NOTES:

- CERTIFICATION/LISTING:  
- ENVIRONMENTAL RATING:
-WEATHERPROOF
-WET LOCATION

THIS IS PROPERTY OF EATON AND CONTAINS CONFIDENTIAL AND TRADE SECRET INFORMATION. POSSESSION DOES NOT CONVEY ANY RIGHTS TO LOAN, SELL OR DISCLOSE SAID INFORMATION. REPRODUCTION OR USE FOR ANY PURPOSE OTHER THAN WHICH IT WAS SUPPLIED MAY NOT BE MADE WITHOUT EXPRESS WRITTEN PERMISSION OF EATON. THIS DRAWING IS ON LOAN AND IS TO BE RETURNED UPON REQUEST.

TOLERANCES UNLESS OTHERWISE SPECIFIED		
	in.	mm
.X	± .1	± .3
.XX	± .01	± .13
.XXX	± .005	± .000
ANGLES	± 1.5°	± 1.5°

UNLESS OTHERWISE SPECIFIED, ALL PRIMARY DIMENSIONS ARE IN INCHES. DIMENSIONS IN [] ARE IN MILLIMETERS.

ORIGINAL DATE	05/4/2020
REDRAWN DATE	
DRAWN BY	TAK
CHECKED BY	
APPROVED BY	
APPROVED BY	

TITLE		4" ROUND 1-1/2" DP WP BOX 1/2" & 3/4" W/4 HOLES	
FIRST MADE FOR		WEATHERPROOF	
SIZE	CODE IDENT. NO.	TP7	REV. 1
C			
SCALE	1:1	WT.	SHEET 1 OF 1