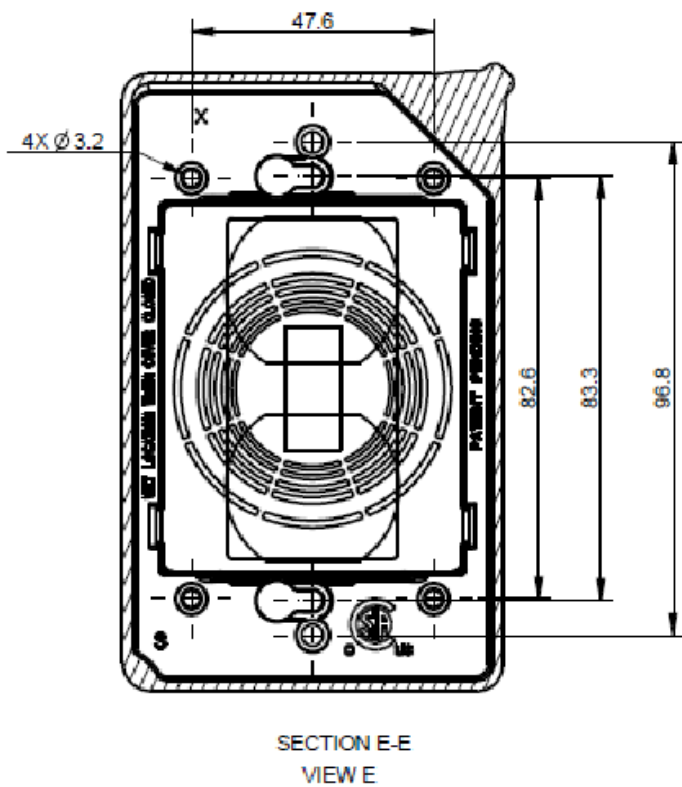
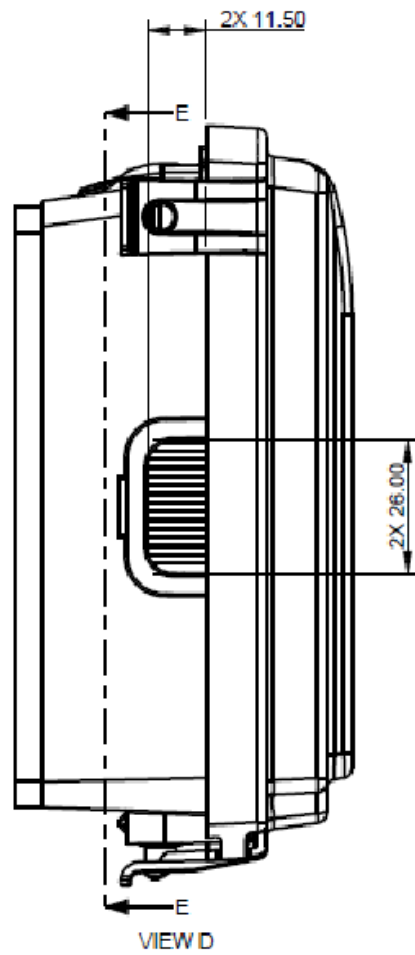
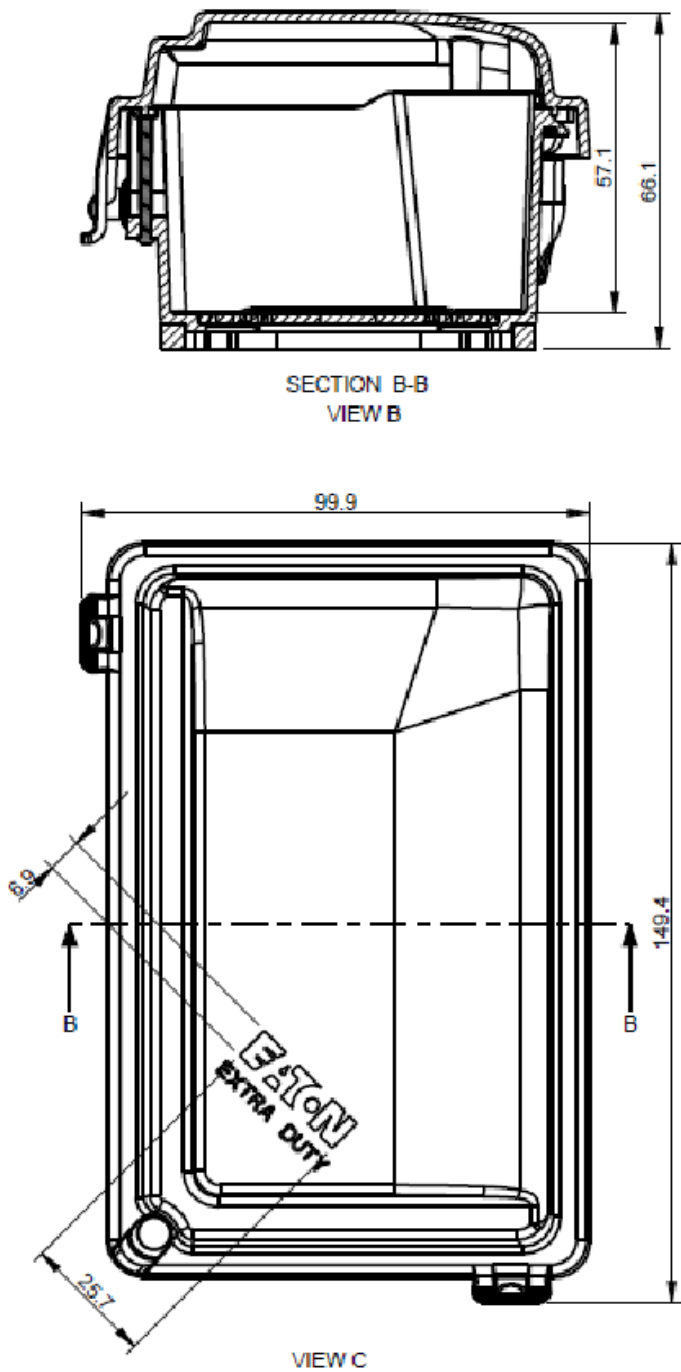
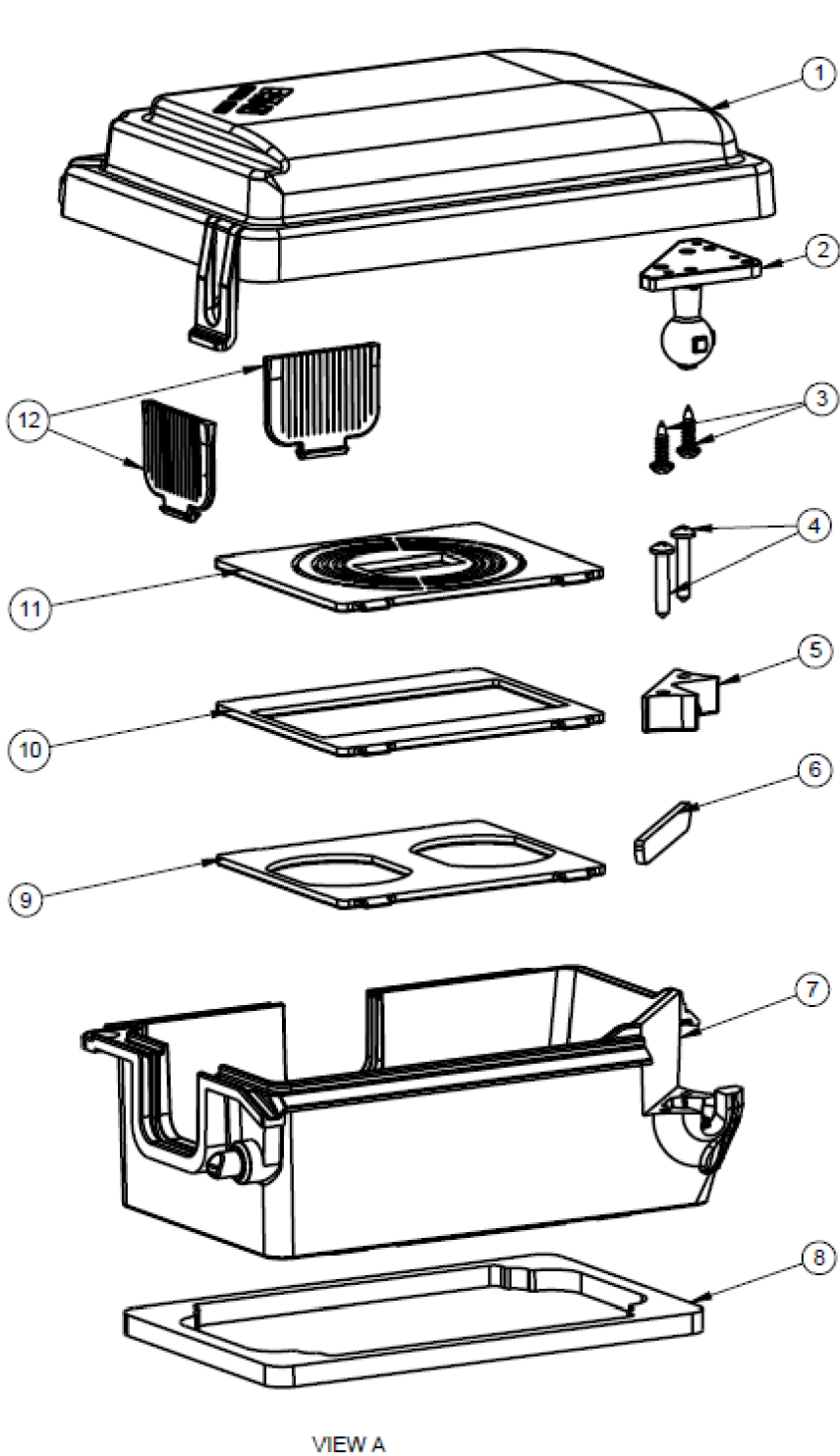


ZONE	NO.	DESCRIPTION	DATE	APPRD.	LTR. NO.
	1	SUBMIT FOR RELEASE	5/7/2020	PW	

SINGLE GANG EXTRA DUTY 2-1/4" DEEP NON-METALLIC WIU COVER

WIU1T1	TRANSPARENT GREY
WIU1G1	GREY
WIU1W1	WHITE
WIU1B1	BRONZE




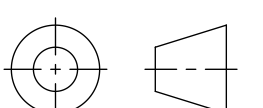
SR. NO.	DESCRIPTION	MATERIAL	QTY
1	LID STANDARD	POLYCARBONATE	1
2	BALL	POLYCARBONATE	1
3	PCT 04-040SS	STEEL	2
4	PCT 04-062	STEEL	2
5	CAP	POLYCARBONATE	1
6	BALL JOINT GASKET	POLYTHELENE FOAM	1
7	BASE	POLYCARBONATE	1
8	BASE GASKET	POLYTHELENE FOAM	1
9	DUPLEX ADAPTER	POLYCARBONATE	1
10	GFCI ADAPTER	POLYCARBONATE	1
11	ROUND & SWITCH ADAPTER	POLYCARBONATE	1
12	EYELASH	ELASTOMER	2

NOTES:

1. CERTIFICATION/LISTING:



2. ENVIRONMENTAL RATING:
-WEATHERPROOF
-WET LOCATION
-NEMA 3R

THIS IS PROPERTY OF EATON AND CONTAINS CONFIDENTIAL AND TRADE SECRET INFORMATION. POSSESSION DOES NOT CONVEY ANY RIGHTS TO LOAN, SELL OR DISCLOSE SAID INFORMATION. REPRODUCTION OR USE FOR ANY PURPOSE OTHER THAN WHICH IT WAS SUPPLIED MAY NOT BE MADE WITHOUT EXPRESS WRITTEN PERMISSION OF EATON. THIS DRAWING IS ON LOAN AND IS TO BE RETURNED UPON REQUEST.		TOLERANCES UNLESS OTHERWISE SPECIFIED		UNLESS OTHERWISE SPECIFIED, ALL PRIMARY DIMENSIONS ARE IN INCHES. DIMENSIONS IN [] ARE IN MILLIMETERS.						
		.X	± .1	± .3	ORIGINAL DATE	05/4/2020		TITLE WIU COVER, NON-METALLIC 1 GANG EXTRA DUTY 2-1/4" DEEP		
		.XX	± .01	± .13						
		.XXX	± .005	± .000						
		ANGLES	± 1.5°	± 1.5°	REDRAWN DATE	TAK				
DIM AND TOL IN ACCORDANCE WITH ASME Y14.5 2009.										
THIRD ANGLE PROJECTION		CHECKED BY								
			APPROVED BY			SIZE	CODE IDENT. NO.	WIU1	REV. 1	
NEXT ASSY.	USED ON		APPROVED BY			C				
APPLICATION										
						SCALE 1:1	WT.	SHEET 1 OF 1		