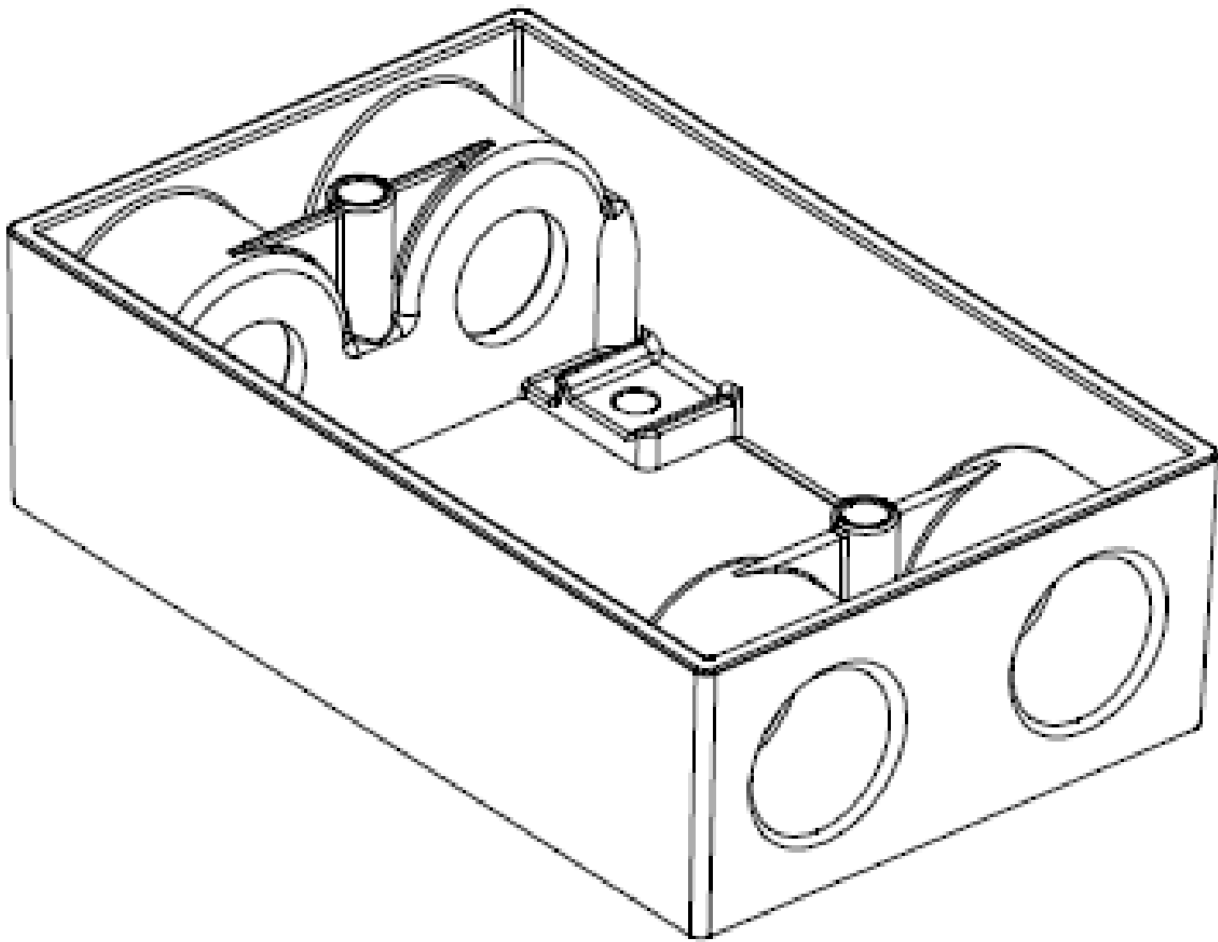
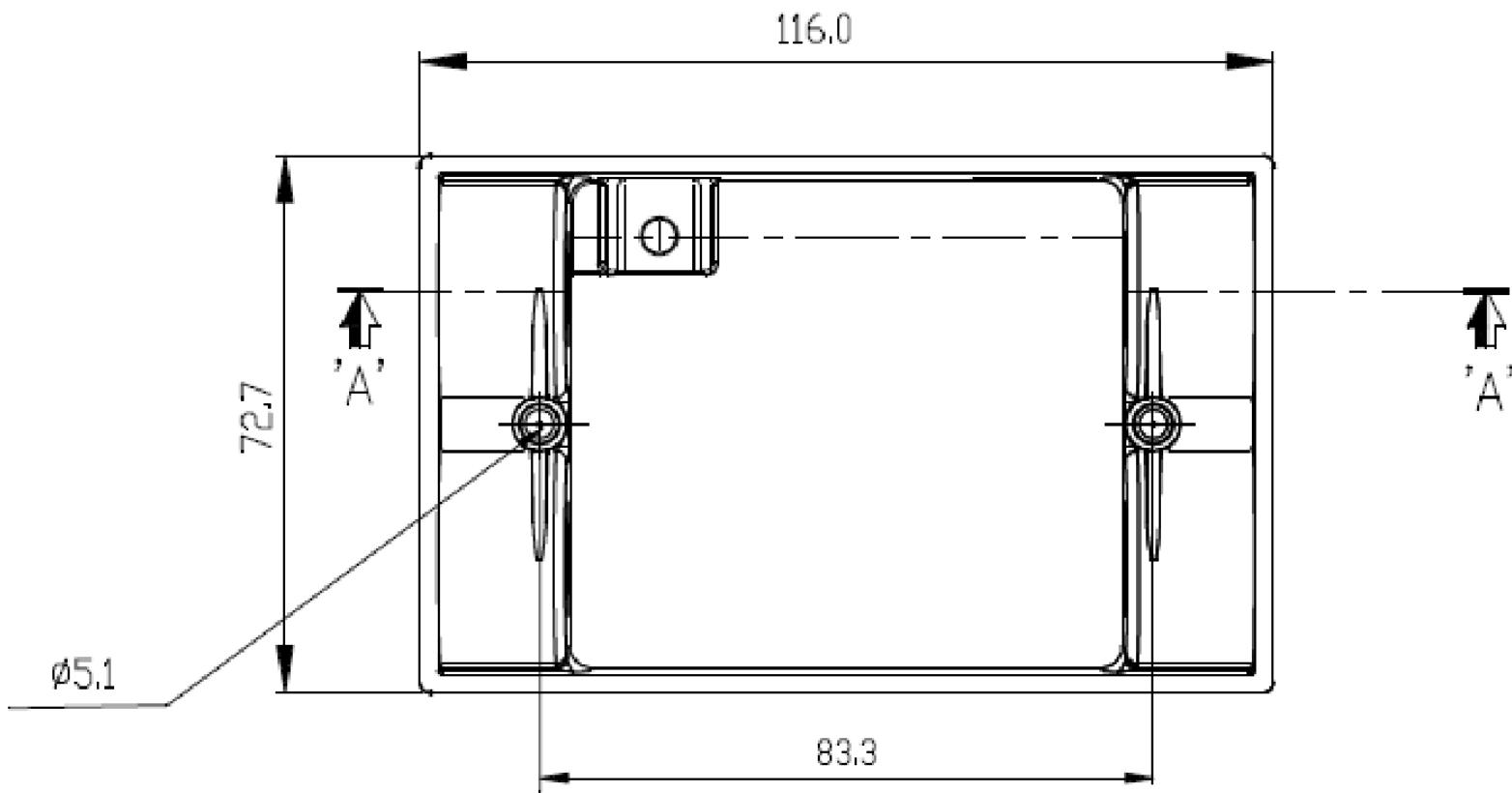
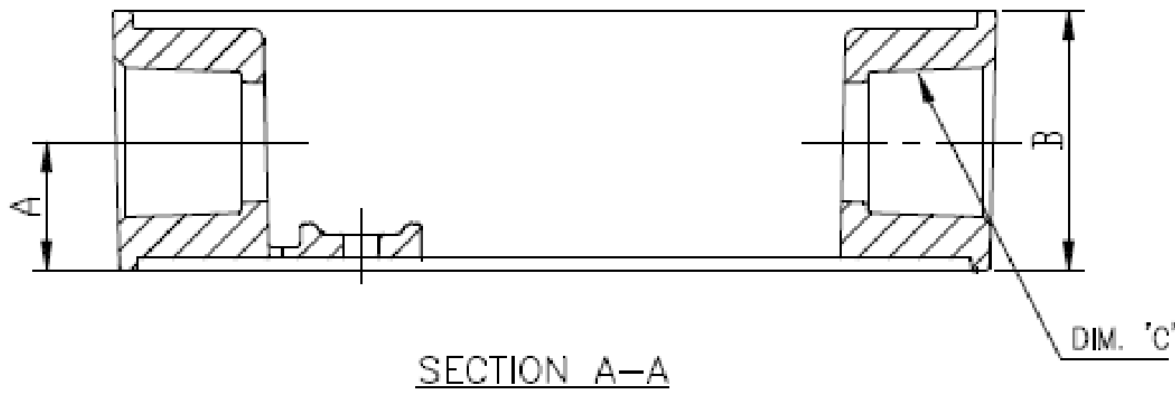


ZONE	NO.	DESCRIPTION	DATE	APPRD.	LTR. NO.
	1	SUBMIT FOR RELEASE	5/7/2020	PW	

1 GANG 4 HOLE RECTANGULAR EXTENSION RING

TP7173	1/2"- GREY
TP7175	1/2" - BRONZE
TP7176	1/2" - WHITE
TP7174	3/4" - GREY



"A"	"B"	"C" NPT THREAD	VOLUME (CU. IN.)
16.7	33.1	1/2"	9.5
17.0	34.7	3/4"	11.0

ACCESSORIES:

SR. NO.	PART NAME	MATERIAL	QTY.
1	GASKET	POLYETHYLENE	1
2	SCREW (NO. 6 x 1.8"L)	PLATED STEEL	2
3	CLOSURE PLUG (GRAY OR UNPAINTED)	PLASTIC	2

NOTES:

1. CERTIFICATION/LISTING:
2. ENVIRONMENTAL RATING:
-WEATHERPROOF
-WET LOCATION



THIS IS PROPERTY OF EATON AND CONTAINS CONFIDENTIAL AND TRADE SECRET INFORMATION. POSSESSION DOES NOT CONVEY ANY RIGHTS TO LOAN, SELL OR DISCLOSE SAID INFORMATION. REPRODUCTION OR USE FOR ANY PURPOSE OTHER THAN WHICH IT WAS SUPPLIED MAY NOT BE MADE WITHOUT EXPRESS WRITTEN PERMISSION OF EATON. THIS DRAWING IS ON LOAN AND IS TO BE RETURNED UPON REQUEST.

TOLERANCES UNLESS OTHERWISE SPECIFIED	
	in. mm
.X	± .1 ± .3
.XX	± .01 ± .13
.XXX	± .005 ± .000
ANGLES	± 1.5° ± 1.5°

DIM AND TOL IN ACCORDANCE WITH ASME Y14.5 2009.

THIRD ANGLE PROJECTION

UNLESS OTHERWISE SPECIFIED, ALL PRIMARY DIMENSIONS ARE IN INCHES. DIMENSIONS IN [] ARE IN MILLIMETERS.

ORIGINAL DATE	05/4/2020
REDRAWN DATE	
DRAWN BY	TAK
CHECKED BY	
APPROVED BY	
APPROVED BY	

TITLE		1 GANG 4HL REC EXT RING 1/2" & 3/4"	
FIRST MADE FOR WEATHERPROOF			
SIZE	CODE IDENT. NO.	TP7	REV. 1
SCALE 1:1	WT.	SHEET 1 OF 1	