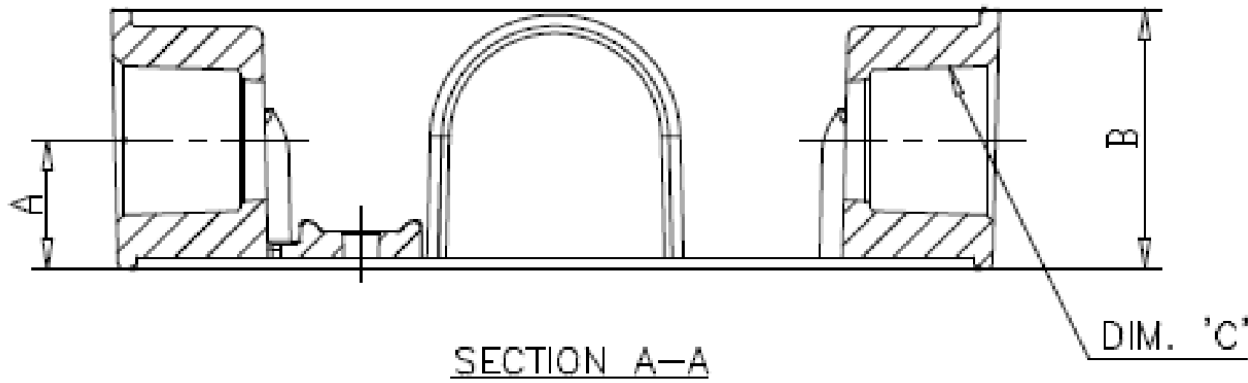


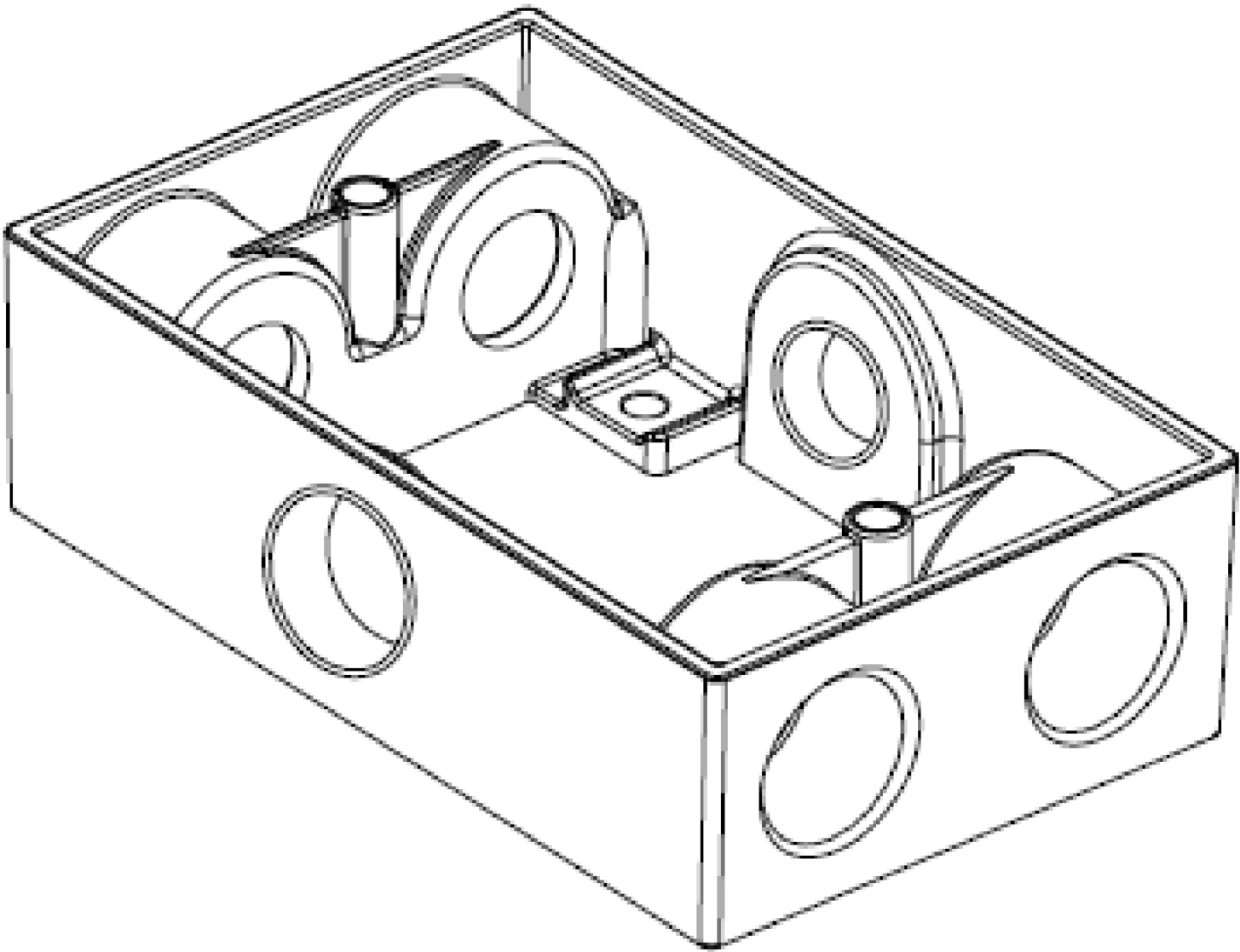
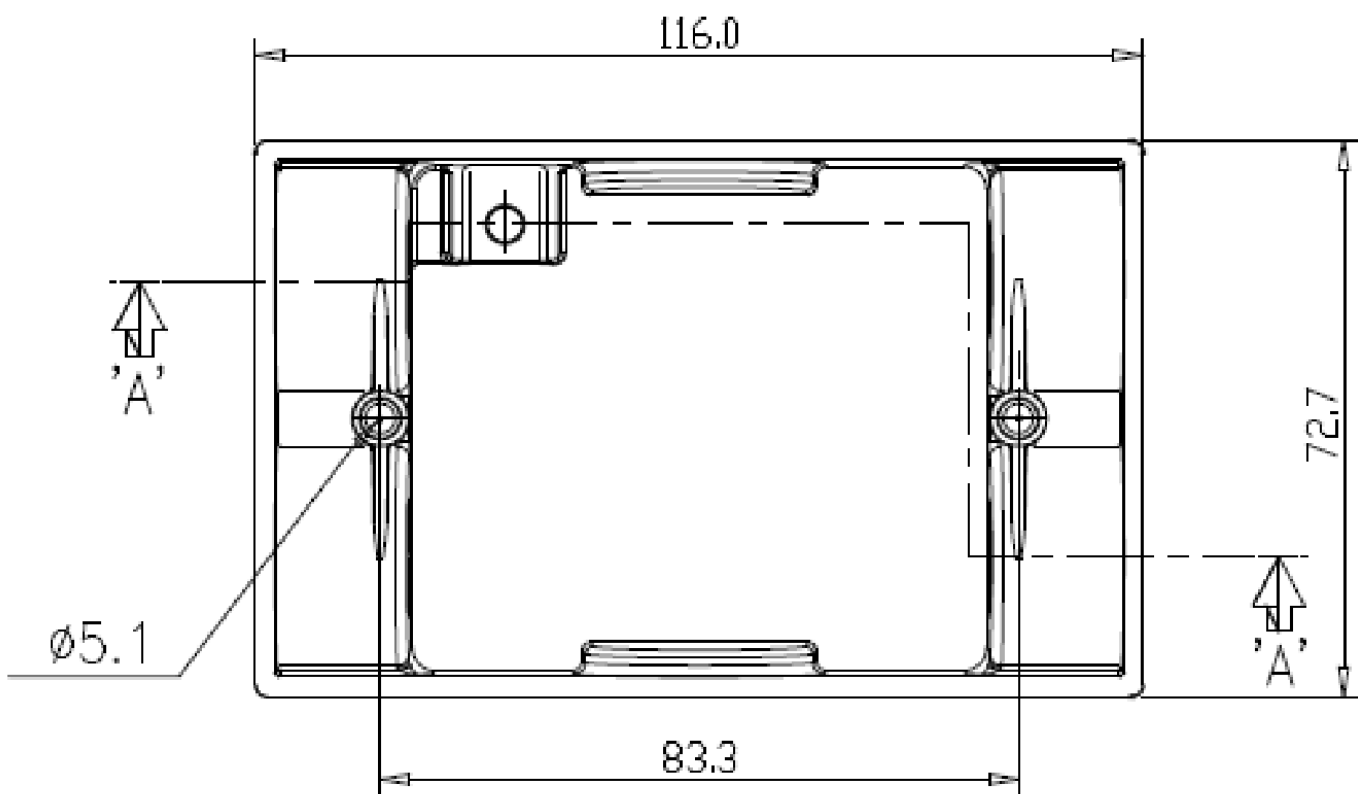
ZONE	NO.	DESCRIPTION	DATE	APPRD.	LTR. NO.
	1	SUBMIT FOR RELEASE	5/7/2020	PW	

1 GANG 6 HOLE RECTANGULAR EXTENSION RING

TP7177	1/2" - GREY
TP7183	3/4" - GREY



SECTION A-A



ACCESSORIES:

SR. NO.	PART NAME	MATERIAL	QTY
1	GASKET	POLYETHYLENE	1
2	SCREW (NO. 6 x 1.8"L)	PLATED STEEL	2
3	CLOSURE PLUG	PLASTIC	3

NOTES:

1. CERTIFICATION/LISTING:
2. ENVIRONMENTAL RATING:
-WEATHERPROOF
-WET LOCATION



"A"	"B"	"C" NPT THREAD	VOLUME (CU. IN.)
16.7	33.1	1/2"	9.5
17.0	34.7	3/4"	11.0

THIS IS PROPERTY OF EATON AND CONTAINS CONFIDENTIAL AND TRADE SECRET INFORMATION. POSSESSION DOES NOT CONVEY ANY RIGHTS TO LOAN, SELL OR DISCLOSE SAID INFORMATION. REPRODUCTION OR USE FOR ANY PURPOSE OTHER THAN WHICH IT WAS SUPPLIED MAY NOT BE MADE WITHOUT EXPRESS WRITTEN PERMISSION OF EATON. THIS DRAWING IS ON LOAN AND IS TO BE RETURNED UPON REQUEST.		TOLERANCES UNLESS OTHERWISE SPECIFIED		UNLESS OTHERWISE SPECIFIED, ALL PRIMARY DIMENSIONS ARE IN INCHES. DIMENSIONS IN [] ARE IN MILLIMETERS.		<div>EAT•N® CROUSE-HINDS SERIES</div>				
		.X	in.							mm
		.XX	± .1							± .3
		.XXX	± .01							± .13
		ANGLES	± .005							± .000
MATERIAL:			± 1.5°	± 1.5°	ORIGINAL DATE	05/4/2020		TITLE 1 GANG 6HL REC EXT RING 1/2" & 3/4"		
FINISH:		DIM AND TOL IN ACCORDANCE WITH ASME Y14.5 2009.		REDRAWN DATE			FIRST MADE FOR WEATHERPROOF			
		THIRD ANGLE PROJECTION		CHECKED BY						
				APPROVED BY			SIZE C	CODE IDENT. NO.	TP7	REV. 1
NEXT ASSY.				APPROVED BY						
APPLICATION								SCALE 1:1		WT.