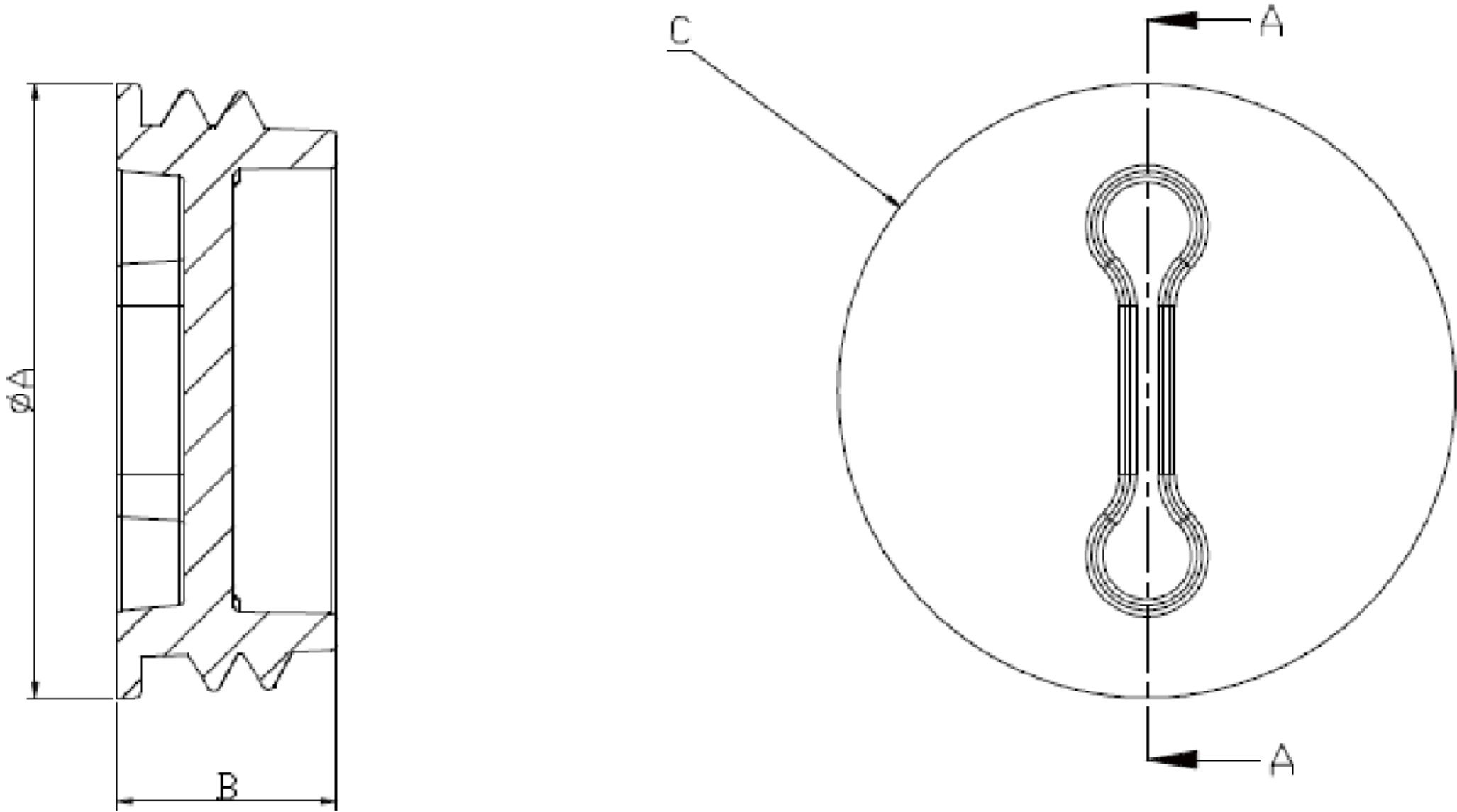


ZONE	NO.	DESCRIPTION	DATE	APPRD.	LTR. NO.
	1	SUBMIT FOR RELEASE	5/7/2020	PW	

PLASTIC CLOSURE PLUG

TP7940	1/2" - GREY DC ZINC
TP7942	1/2" - BRONZE DC ZINC
TP7941	1/2" - WHITE DC ZINC
TP7944	3/4" - GREY DC ZINC
TP7946	3/4" - BRONZE 4GB
TP7945	3/4" - WHITE 4GB

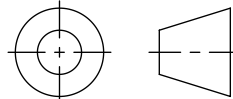


SECTION A-A

" ϕ A"	"B"	"C" NPT THREAD
20.50	7.30	1/2"
26.30	7.80	3/4"

NOTES:

1. CERTIFICATION/LISTING: 
2. ENVIRONMENTAL RATING:
-WEATHERPROOF
-WET LOCATION

<div>THIS IS PROPERTY OF EATON AND CONTAINS CONFIDENTIAL AND TRADE SECRET INFORMATION. POSSESSION DOES NOT CONVEY ANY RIGHTS TO LOAN, SELL OR DISCLOSE SAID INFORMATION. REPRODUCTION OR USE FOR ANY PURPOSE OTHER THAN WHICH IT WAS SUPPLIED MAY NOT BE MADE WITHOUT EXPRESS WRITTEN PERMISSION OF EATON. THIS DRAWING IS ON LOAN AND IS TO BE RETURNED UPON REQUEST.</div>		TOLERANCES UNLESS OTHERWISE SPECIFIED		UNLESS OTHERWISE SPECIFIED, ALL PRIMARY DIMENSIONS ARE IN INCHES. DIMENSIONS IN [] ARE IN MILLIMETERS.		<div>EAT•N® CROUSE-HINDS SERIES</div>							
		.X	± .1	± .3	ORIGINAL DATE	05/4/2020							
		.XX	± .01	± .13	REDRAWN DATE								
		.XXX	± .005	± .000	DRAWN BY	TAK							
		ANGLES	± 1.5°	± 1.5°	CHECKED BY								
MATERIAL:		DIM AND TOL IN ACCORDANCE WITH ASME Y14.5 2009.				TITLE 3/4" PLASTIC CLOSURE PLUG							
FINISH:		THIRD ANGLE PROJECTION				FIRST MADE FOR WEATHERPROOF							
				APPROVED BY		SIZE		CODE IDENT. NO.		TP7		REV. 1	
NEXT ASSY.				USED ON		C							
APPLICATION								SCALE 1:1		WT.		SHEET 1 OF 1	