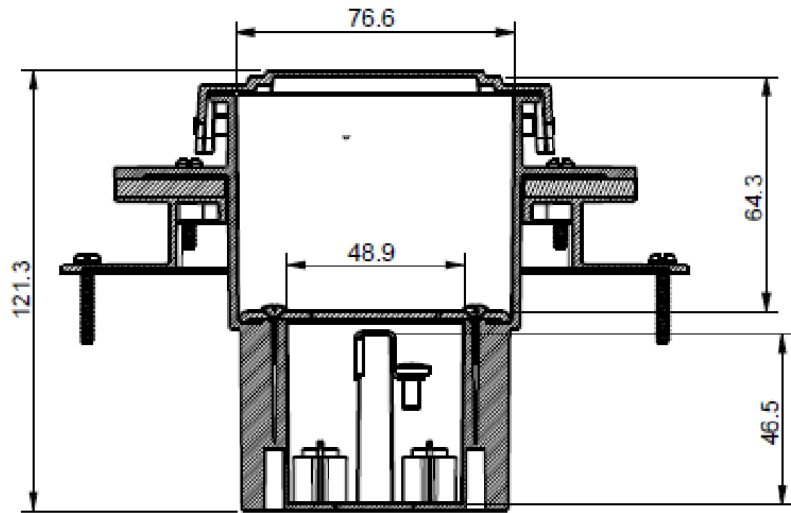
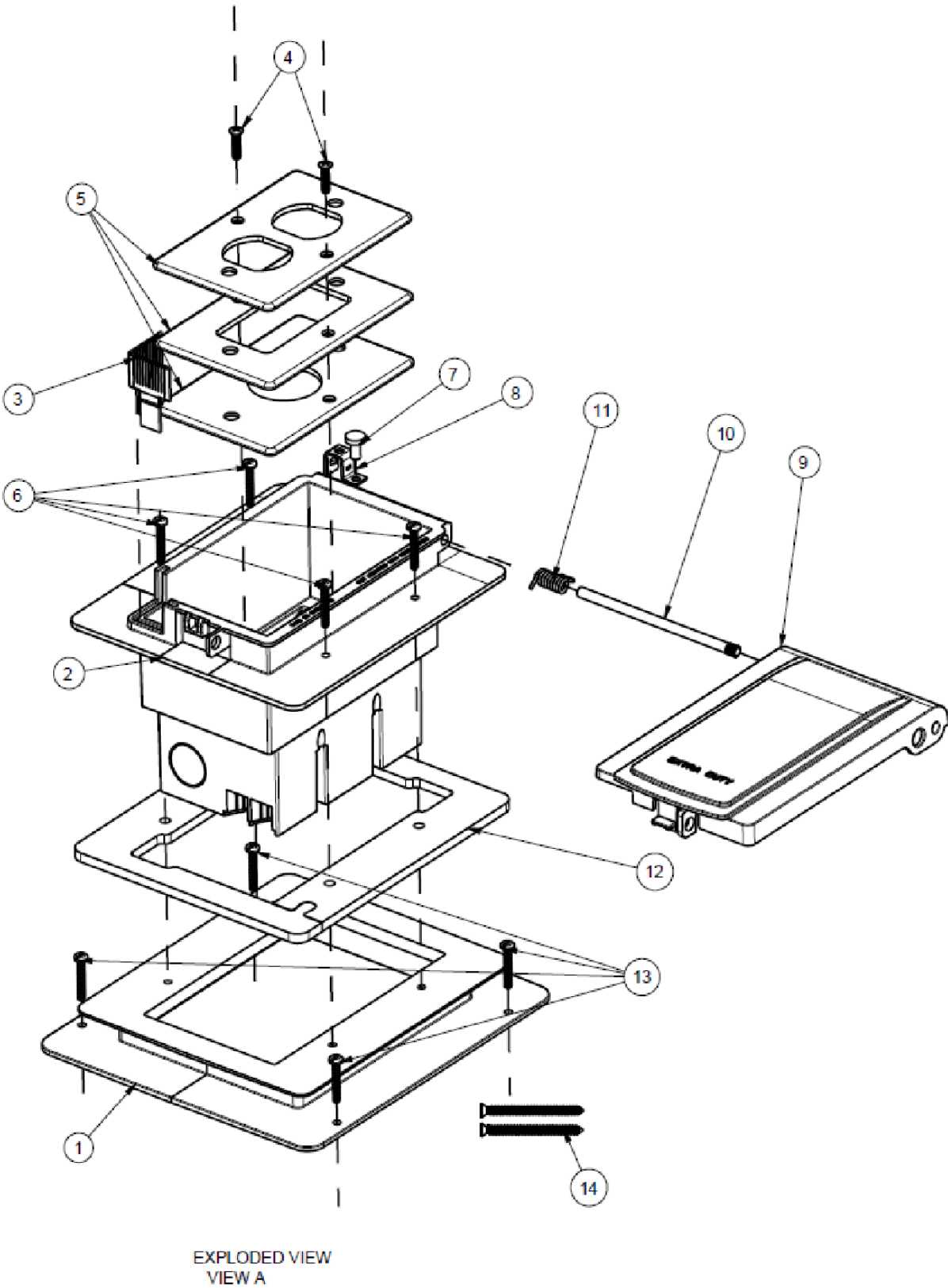


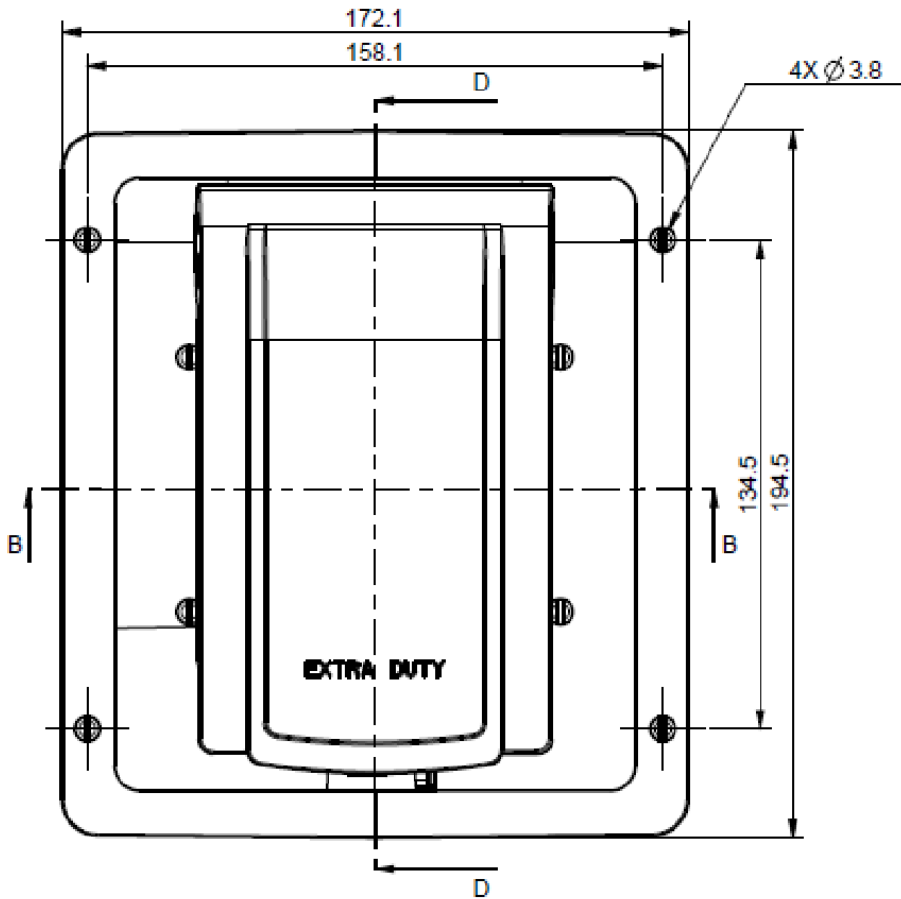
ZONE	NO.	DESCRIPTION	DATE	APPRD.	LTR. NO.
	1	SUBMIT FOR RELEASE	5/7/2020	PW	

SINGLE GANG EXTRA DUTY RECESSED WP BOX COVER - IN BOX

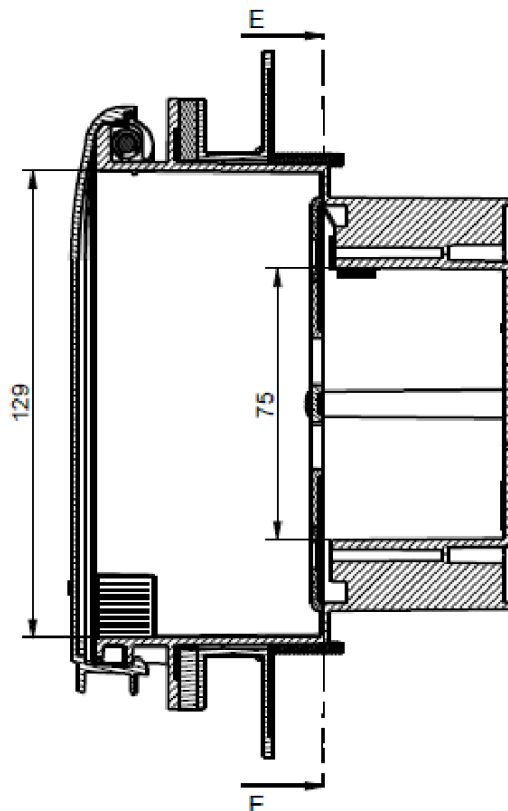
WIUR1T1	TRANSPARENT GREY
WIUR1G1	GREY
WIUR1W1	WHITE
WIUR1B1	BRONZE



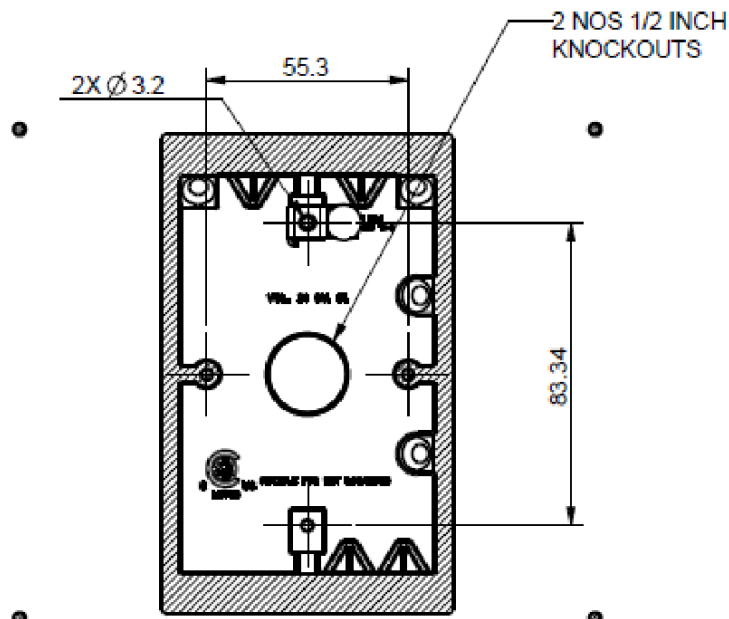
SECTION B-B
VIEW-B



VIEW-C



SECTION D-D
VIEW-D


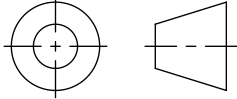


SECTION D-D
VIEW-E

14	ROUGH-IN SCREWS	STEEL	2
13	FLANGE MOUNTING SCREWS	STEEL	4
12	GASKET	POLYTHELENE FOAM	1
11	SPRING	STEEL	1
10	HINGE PIN	STEEL	1
09	LID	POLYCARBONATE	1
08	GROUNDING PLATE	CRCA	1
07	GROUNDING SCREW	STEEL	1
06	BASE MOUNTING SCREWS	STEEL	4
05	ADAPTORS	POLYCARBONATE	3
04	ADAPTER SCREWS	STEEL	2
03	EYELASH	ELASTOMER	2
02	BOX	POLYCARBONATE	1
01	FLANGE	POLYCARBONATE	1
SR.NO	PART NAME	MATERIAL	QTY

NOTES:

- CERTIFICATION/LISTING: 
- ENVIRONMENTAL RATING:
-WEATHERPROOF
-WET LOCATION
-NEMA 3R

THIS IS PROPERTY OF EATON AND CONTAINS CONFIDENTIAL AND TRADE SECRET INFORMATION. POSSESSION DOES NOT CONVEY ANY RIGHTS TO LOAN, SELL OR DISCLOSE SAID INFORMATION. REPRODUCTION OR USE FOR ANY PURPOSE OTHER THAN WHICH IT WAS SUPPLIED MAY NOT BE MADE WITHOUT EXPRESS WRITTEN PERMISSION OF EATON. THIS DRAWING IS ON LOAN AND IS TO BE RETURNED UPON REQUEST.		TOLERANCES UNLESS OTHERWISE SPECIFIED		UNLESS OTHERWISE SPECIFIED, ALL PRIMARY DIMENSIONS ARE IN INCHES. DIMENSIONS IN [] ARE IN MILLIMETERS.			
		.X ± .1 .XX ± .01 .XXX ± .005 ANGLES ± 1.5°	in. mm ± .3 ± .13 ± .000 ± 1.5°	ORIGINAL DATE 05/4/2020	REDRAWN DATE TAK		
MATERIAL:		DIM AND TOL IN ACCORDANCE WITH ASME Y14.5 2009.		CHECKED BY		TITLE WIU BOX COVER IN-BOX 1G EXTRA DUTY RECESSED WP	
FINISH:		THIRD ANGLE PROJECTION		APPROVED BY		FIRST MADE FOR WEATHERPROOF	
NEXT ASSY.		USED ON		APPROVED BY		SIZE C	
APPLICATION						CODE IDENT. NO. WIU	
						REV. 1	
						SCALE 1:1	
						WT.	
						SHEET 1 OF 1	