

| ZONE | NO. | DESCRIPTION        | DATE     | APPRD. | LTR. NO. |
|------|-----|--------------------|----------|--------|----------|
|      | 1   | SUBMIT FOR RELEASE | 5/7/2020 | PW     |          |

4" 4 HOLE ROUND 1-1/2" DEEP WP BOX W/BLANK PLATE

|        |      |
|--------|------|
| TP7147 | 1/2" |
| TP7151 | 3/4" |

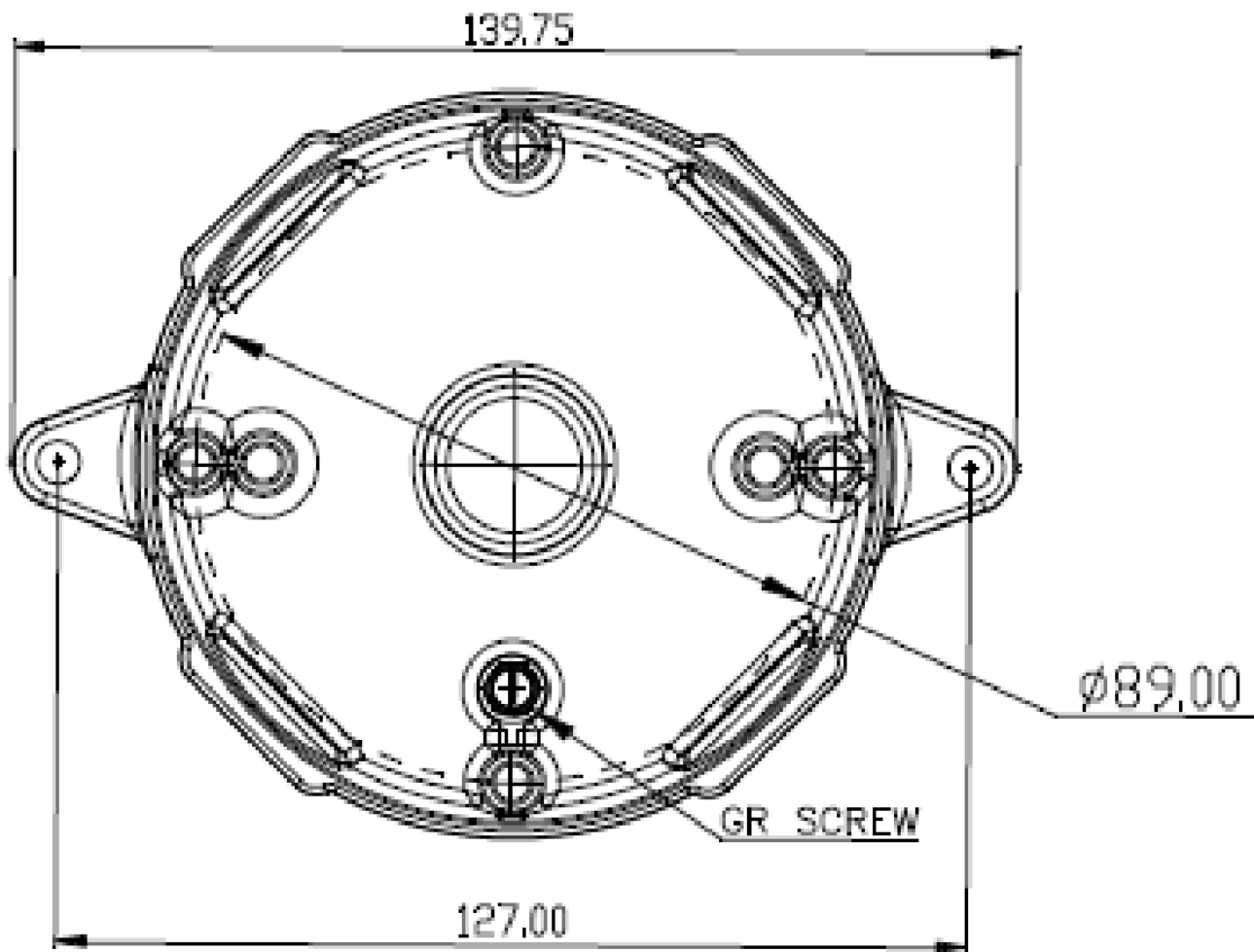


FIG. 'A'

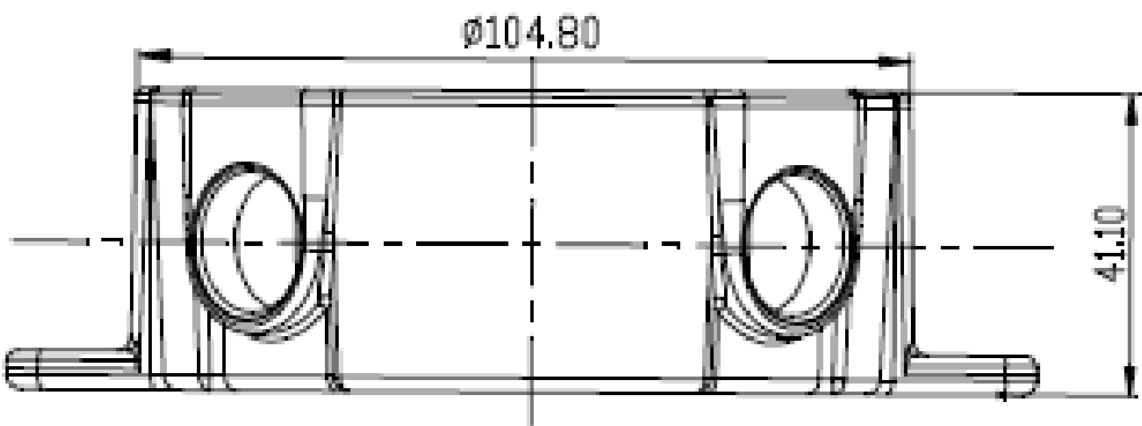
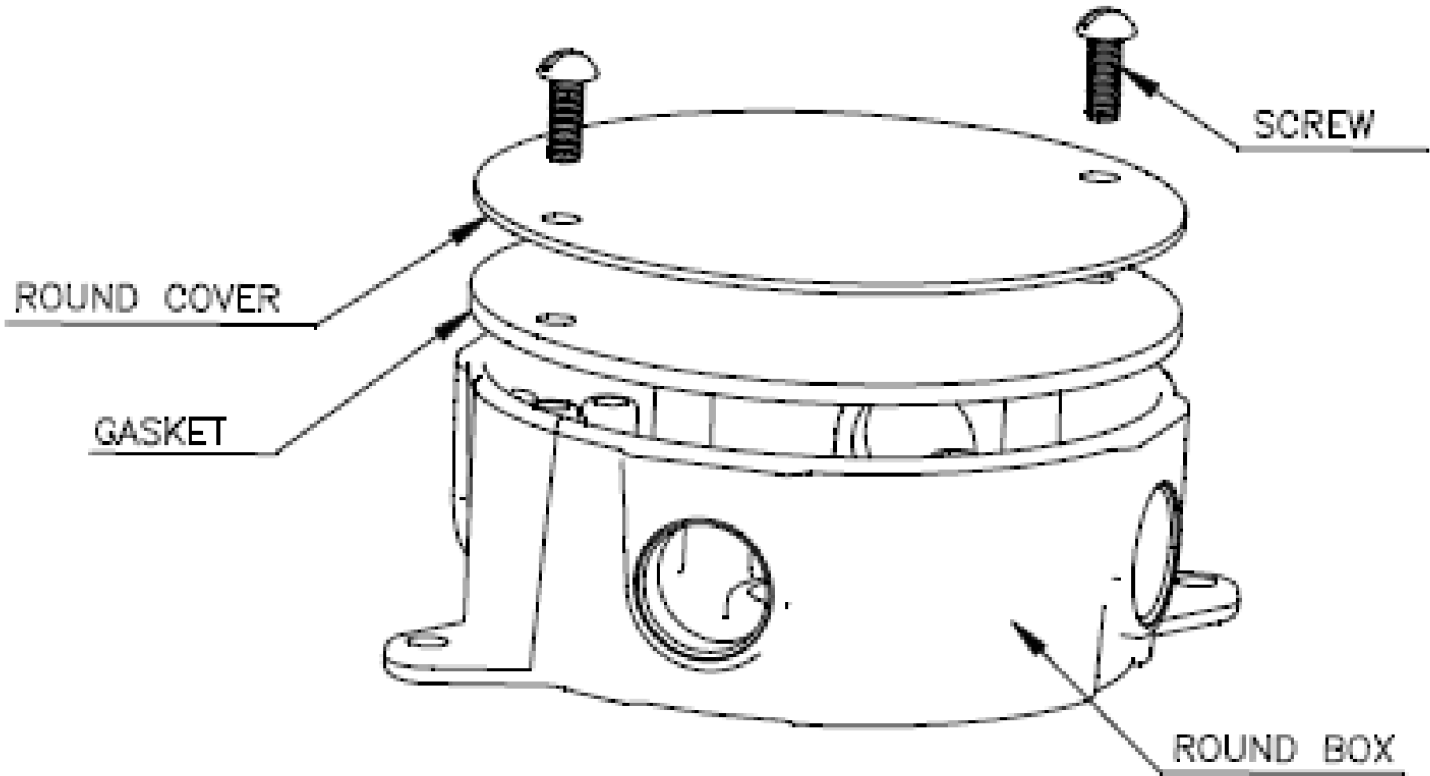


FIG. 'B'



ACCESSORIES:

| SR. NO. | PART NAME    | MATERIAL         | QTY. |
|---------|--------------|------------------|------|
| 1       | BOX          | ALUMINUM ALLOY   | 1    |
| 2       | COVER        | GALVANISED STEEL | 1    |
| 3       | GASKET       | POLYETHELENE     | 1    |
| 4       | CLOSURE PLUG | PLASTIC          | 4    |
| 5       | GR SCREW     | PLATED STEEL     | 1    |
| 6       | SCREW        | PLATED STEEL     | 2    |

NOTES:

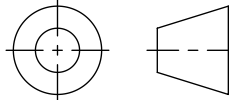
1. CERTIFICATION/LISTING: 
2. ENVIRONMENTAL RATING:  
-WEATHERPROOF  
-WET LOCATION

THIS IS PROPERTY OF EATON AND CONTAINS CONFIDENTIAL AND TRADE SECRET INFORMATION. POSSESSION DOES NOT CONVEY ANY RIGHTS TO LOAN, SELL OR DISCLOSE SAID INFORMATION. REPRODUCTION OR USE FOR ANY PURPOSE OTHER THAN WHICH IT WAS SUPPLIED MAY NOT BE MADE WITHOUT EXPRESS WRITTEN PERMISSION OF EATON. THIS DRAWING IS ON LOAN AND IS TO BE RETURNED UPON REQUEST.

| TOLERANCES<br>UNLESS OTHERWISE SPECIFIED |               |
|--|---------------|
|  | in. mm        |
| .X                                       | ± .1 ± .3     |
| .XX                                      | ± .01 ± .13   |
| .XXX                                     | ± .005 ± .000 |
| ANGLES                                   | ± 1.5° ± 1.5° |


DIM AND TOL IN ACCORDANCE WITH ASME Y14.5 2009.

THIRD ANGLE PROJECTION



UNLESS OTHERWISE SPECIFIED, ALL PRIMARY DIMENSIONS ARE IN INCHES. DIMENSIONS IN [ ] ARE IN MILLIMETERS.

|               |           |
|---------------|-----------|
| ORIGINAL DATE | 05/4/2020 |
| REDRAWN DATE  |           |
| DRAWN BY      | TAK       |
| CHECKED BY    |           |
| APPROVED BY   |           |
| APPROVED BY   |           |

 **CROUSE-HINDS**  
SERIES

RND 1-1/2" DEEP WP BOX W/BLNK PLT  
4" 4 HOLE 1/2" & 3/4"

FIRST MADE FOR WEATHERPROOF

|      |                 |      |
|------|-----------------|------|
| SIZE | CODE IDENT. NO. | REV. |
| C    | TP7             | 1    |

SCALE 1:1 WT. SHEET 1 OF 1