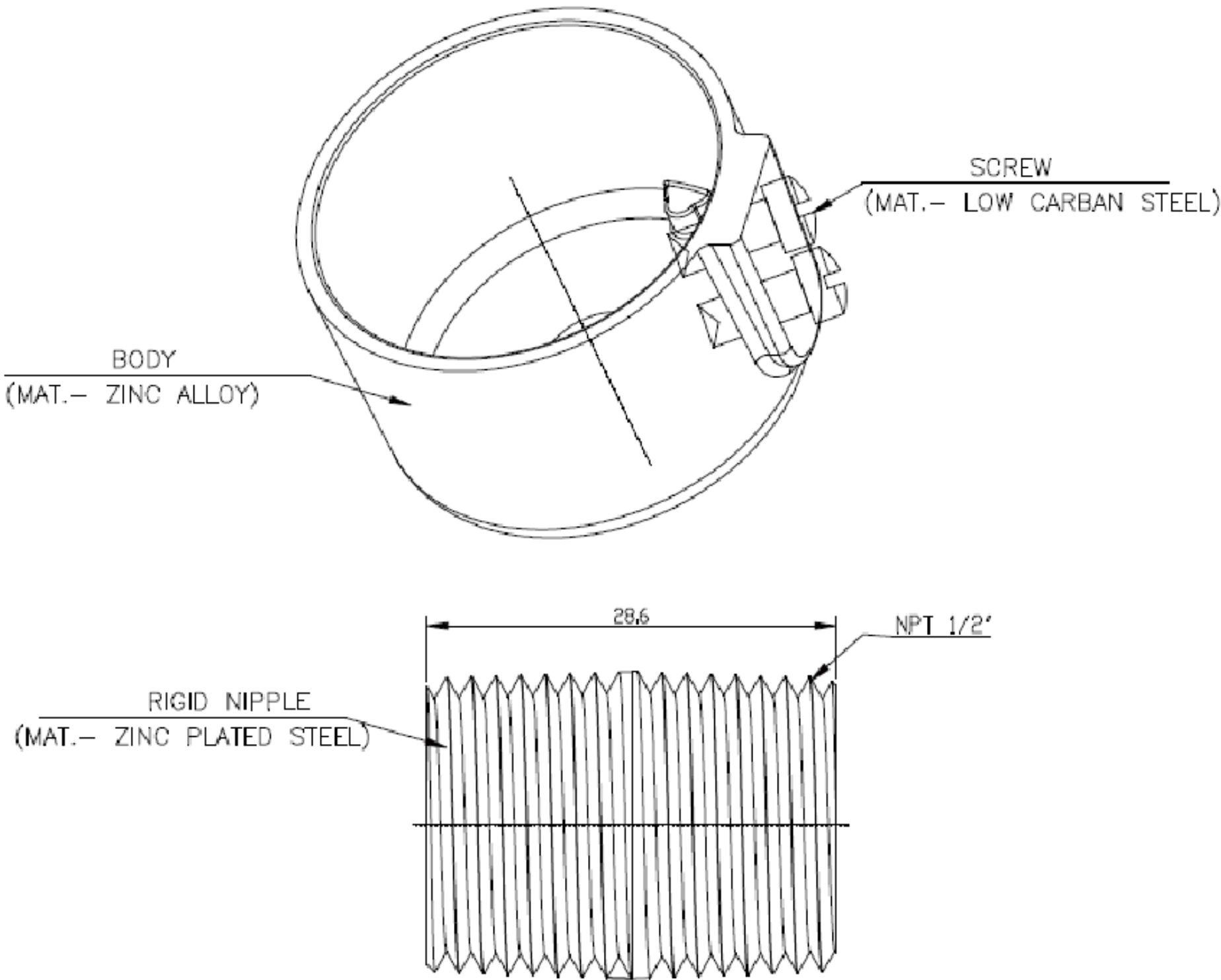
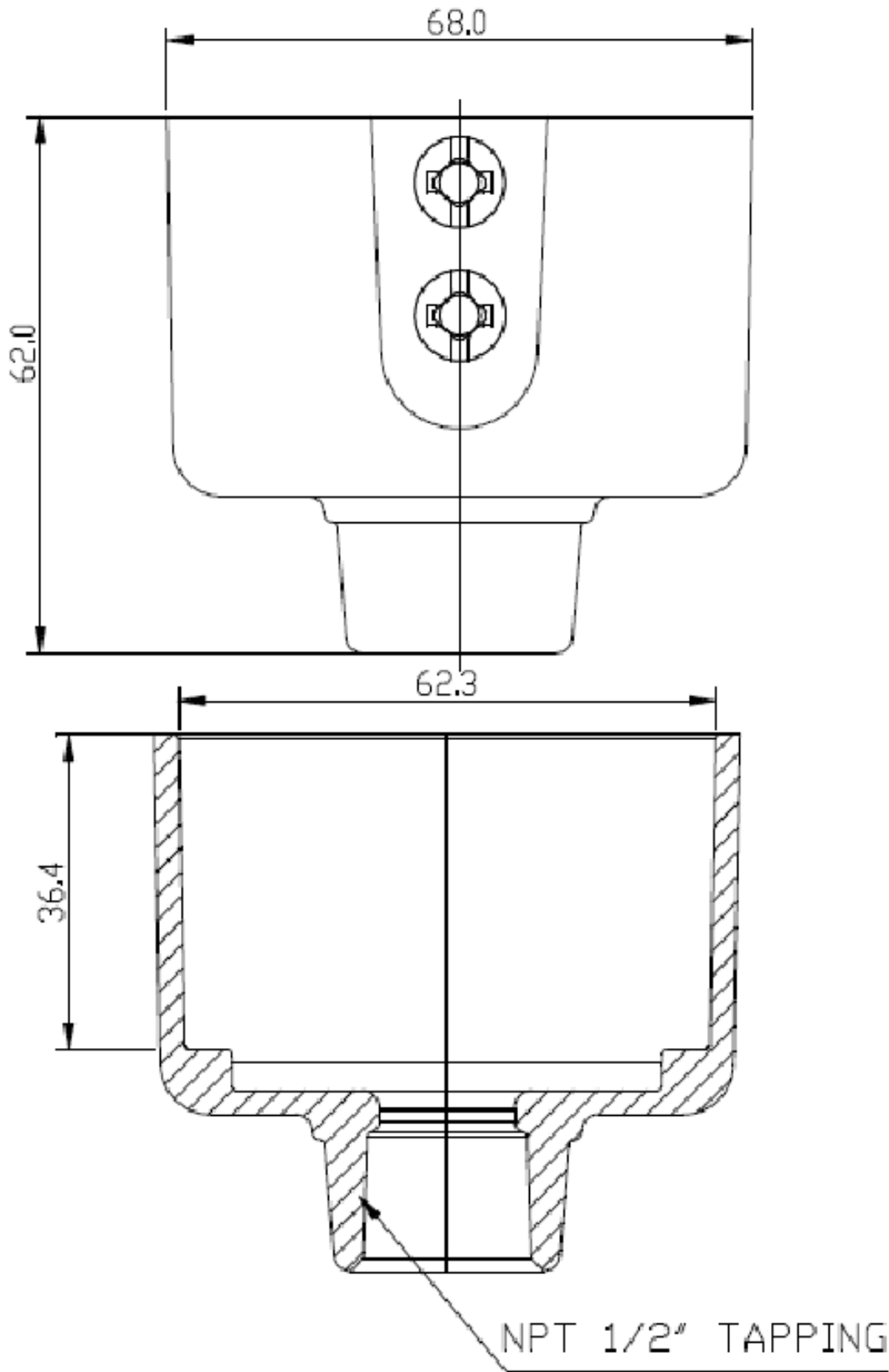


ZONE	NO.	DESCRIPTION	DATE	APPRD.	LTR. NO.
	1	SUBMIT FOR RELEASE	5/7/2020	PW	


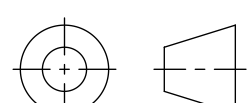
2-1/2" DIA POL FITTER 1/2 MALE THREAD WP

TP7188	GREY
--------	------



SW_REV 11/2015

CCHSY-SWTemplate-C

<small>THIS IS PROPERTY OF EATON AND CONTAINS CONFIDENTIAL AND TRADE SECRET INFORMATION. POSSESSION DOES NOT CONVEY ANY RIGHTS TO LOAN, SELL OR DISCLOSE SAID INFORMATION. REPRODUCTION OR USE FOR ANY PURPOSE OTHER THAN WHICH IT WAS SUPPLIED MAY NOT BE MADE WITHOUT EXPRESS WRITTEN PERMISSION OF EATON. THIS DRAWING IS ON LOAN AND IS TO BE RETURNED UPON REQUEST.</small>		TOLERANCES UNLESS OTHERWISE SPECIFIED		<small>UNLESS OTHERWISE SPECIFIED, ALL PRIMARY DIMENSIONS ARE IN INCHES. DIMENSIONS IN [] ARE IN MILLIMETERS.</small>						
			in.							mm
		.X	± .1							± .3
		.XX	± .01							± .13
		.XXX	± .005							± .000
MATERIAL:		ANGLES	± 1.5°	± 1.5°	ORIGINAL DATE		05/4/2020			
		DIM AND TOL IN ACCORDANCE WITH ASME Y14.5 2009.		REDRAWN DATE						
		THIRD ANGLE PROJECTION		DRAWN BY		TAK				
				CHECKED BY						
				APPROVED BY						
						TITLE		POL FITTER 1/2 MALE THREAD 2 1/2" DIA		
						FIRST MADE FOR WEATHERPROOF				
						SIZE	CODE IDENT. NO.	TP7		REV. 1
NEXT ASSY.		USED ON				SCALE 1:1		WT.	SHEET 1 OF 1	
APPLICATION										