

SWIVEL ATTACHMENTS



FUNCTION: May be used as a branch line restraint for structural attachment. May be used in a pitched or sloped roof application, to meet requirements of NFPA 13, or may be used as an upper attachment with short hanger rod to omit seismic bracing.

SIZE: 3/8"

FINISH: Electro-galvanized

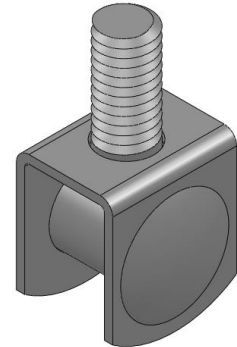
MATERIAL: Low Carbon Steel

INSTALL: Insert a #2 screwdriver through the tapped hole to access the head of attachment fastener. Tighten attachment fastener to desired attachment point, then remove screwdriver and thread 3/8-16 threaded rod into Fig. 020.

APPROVALS: Underwriters' Laboratories Listed in the U.S. (UL) and Canada (CUL)

ORDERING: Specify figure number.

**Fig. 020
ROD SWIVEL
ATTACHMENT**



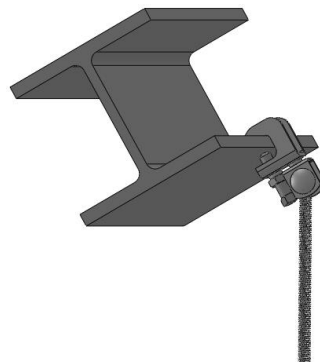
Rod Size A	Max. Pipe Size		Max. Rec. Load		Wt. Each	
			lbs.	kN	lbs.	kg
3/8	4	(100)	730	(3.25)	.10	(.05)



Branch Line Restraint

NFPA13 2010

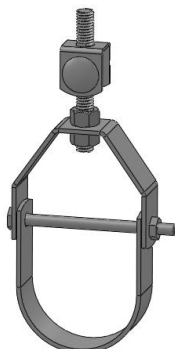
Section A.9.3.6.1(5)



Pitched Roof Application

NFPA13 2010

Section 9.1.2.6



Used as an upper attachment
with a short hanger rod to
omit seismic bracing



PHD Manufacturing, Inc.

44018 Columbiana-Waterford Road

Columbiana, Ohio 44408-9481

Phone: 800-321-2736 • 330-482-9256

Fax: 330-482-2763

Web: www.phd-mfg.com

FIG. 020 ROD SWIVEL ATTACHMENT

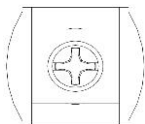
Size: 3/8"

Function: May be used as a branch line restraint for structural attachment. May be used in a pitched or sloped roof application to meet requirements of NFPA 13.

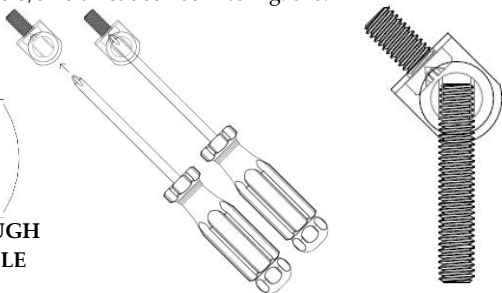
Approvals: Underwriters Laboratories listed for US and Canada

Material: Low Carbon Steel

Installation: Insert a #2 screwdriver through the tapped hole to access the head of attachment fastener. Tighten attachment fastener to desired attachment point, then remove screwdriver and thread 3/8-16 threaded rod into Fig. 020.



**VIEW THROUGH
TAPPED HOLE**



Branch Line Restraint

NFPA13 2010 Section A.9.3.6.1(5)



Pitched Roof Application

NFPA13 2010 Section 9.1.2.6

The Complete Line of Pipe Supports and Devices

Pipe Hangers ▲ Strut & Accessories ▲ Pipe Clamps ▲ Beam Clamps ▲ Shields