

Location:



# SYMMONS® Safetymix®

## Hand Shower System 1-25-FSB

### Specification Submittal

#### Feature Highlights

- Symmons Safetymix 3-port pressure balancing mixing valve with lever handle and adjustable stop screw to limit handle turn.
- Open Flow FS hand shower with 5 foot flexible metal hose, inline vacuum breaker, wall connection and flange
- 30 inch adjustable slide bar for mounting hand shower
- Standard flow rate 2.5 gpm (9.5 L/min)  
*Optional lower flow rate restrictor available*
- Polished chrome finish

#### Model Numbers

- ☐ 1-25-FSB  
Hand Shower System with 30 inch adjustable slide bar, Safetymix 3-port pressure balancing mixing valve #4-500

#### Finish Options

*Append appropriate -suffix to model number.*

- Polished chrome finish (standard)

#### Standards / Certifications

ASME A112.18.1/CSA B125.1



#### Warranty

- Limited Lifetime - to the original end purchaser in residential/consumer installations.
- 5 years - for commercial installations

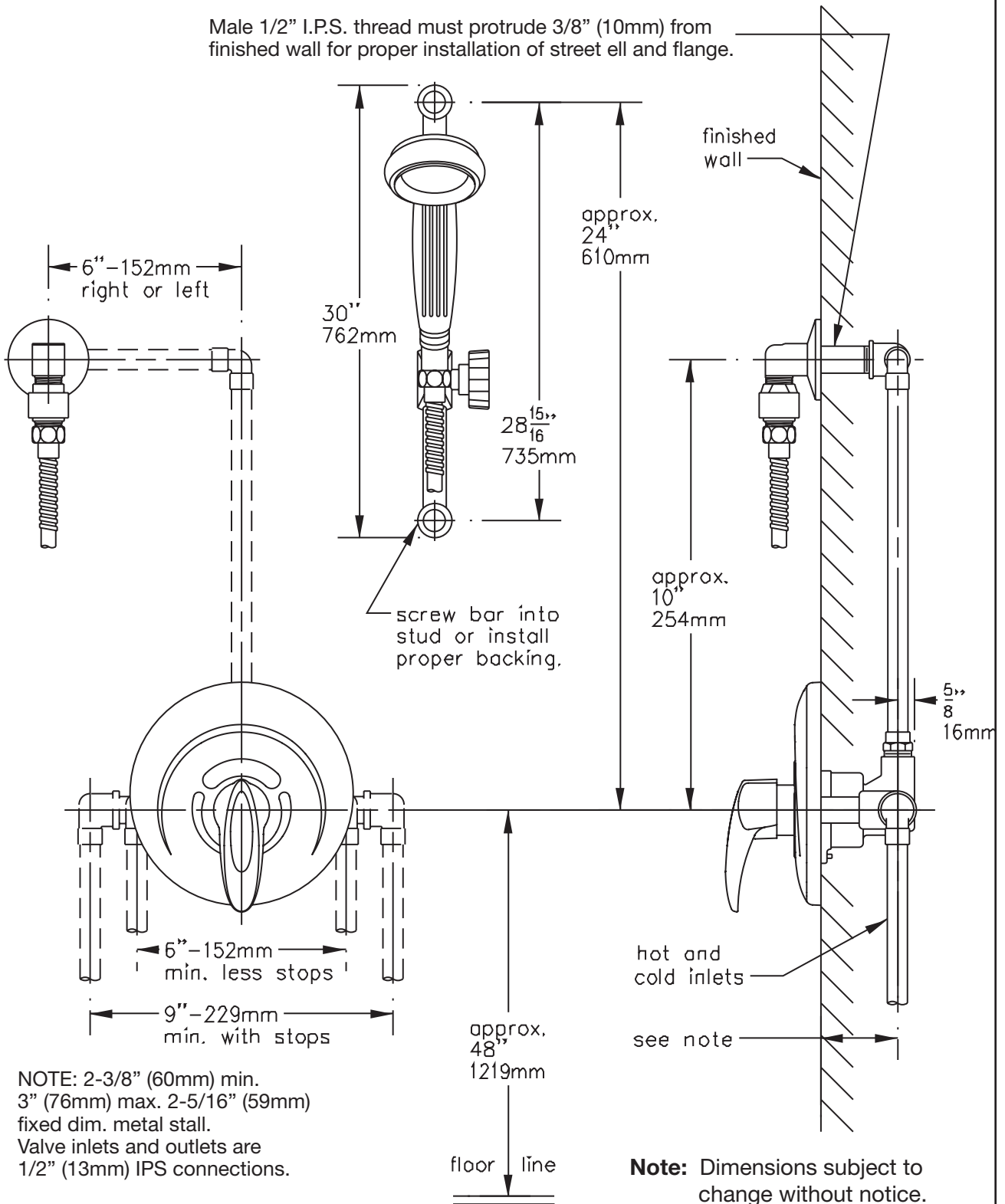


#### Options / Modifications

*Append appropriate -suffix to model number.*

- ☐ **CG** -1.5 1.5 gpm (5.7 L/min) flow restrictor
- ☐ -2.0 2.0 gpm (7.6 L/min) flow restrictor
- ☐ -72 72" hose in place of 60" hose
- ☐ -ADAHS 1 mode white hand shower unit with non-positive shut-off button in place of standard hand shower unit
- ☐ -B48 48" adjusting bar in place of standard 30" bar
- ☐ -BX Back connection with integral stops
- ☐ -G Dial thermometer
- ☐ -QD Quick disconnect
- ☐ -R 72" white vinyl hose in place of 60" metal hose
- ☐ -VB Elevated vacuum breaker with wall flanges in place of in-line vacuum breaker
- ☐ -VP Vandal resistant escutcheon screws in place of standard screws
- ☐ -X Integral stops - allows water shut off at valve for service. Recommended for use on all multiple commercial installations
- ☐ -X-3/4" 3/4" valve to increase flow approximately 20%
- ☐ -X-CHKS Integral check stops - for use in installations where a positive shut-off device is used downstream of mixing valve

### Dimensions *Safetymix Hand Shower System, 1-25-FSB*



Symmons Industries, Inc. ■ 31 Brooks Drive ■ Braintree, MA 02184  
Phone: (800) 796-6667 ■ Fax: (800) 961-9621  
Website: [symmons.com](http://symmons.com) ■ Email: [gethelp@symmons.com](mailto:gethelp@symmons.com)

Copyright © 2017 Symmons Industries, Inc. ■ ZV-1495 REV B ■ 013117



**SYMMONS®**  
the smart choice™