



## NEW PRODUCT PREVIEW

### LS Series Aquatic Sand Filter

NEW AQUATIC FILTERS

#### KEY FEATURES

- Ideal for Sensitive Aquatic Environments or Salt Water Systems
- All Wetted Hardware Manufactured from 316 Stainless Steel
- Corrosion Resistant Thermoplastic Housing and Base
- Durable Flanged Inspection Cover
- Integral Top Diffuser
- Efficient, Multilateral Underdrain Assembly
- Integral Molded Drain Plug

#### OPTIONS

- LS Aquatic 6-Way Multiport Valve

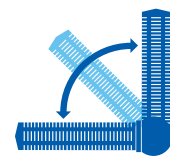
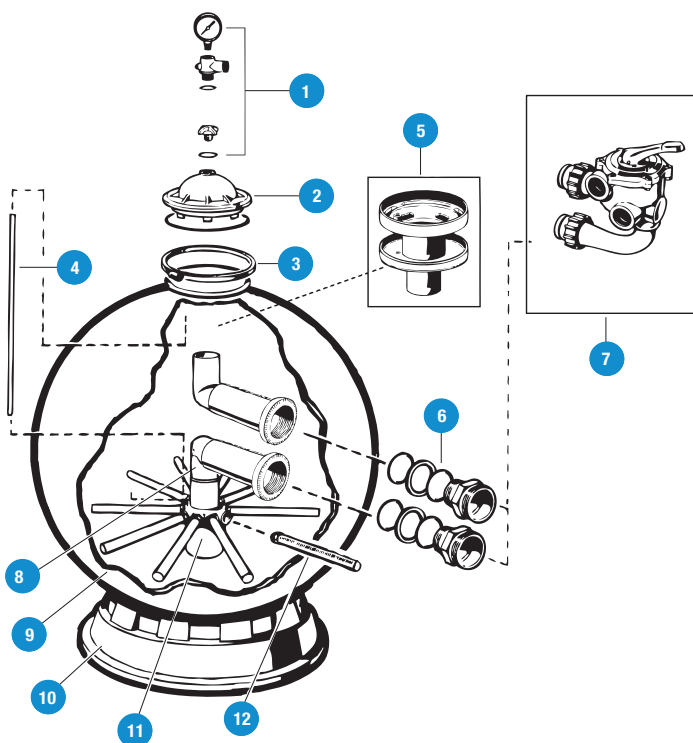
#### TYPICAL APPLICATIONS

- Aquariums
- Aquatic Animal Life Support
- Science and Research Facilities

#### MATERIALS

- HDPE Body per ASTM D4976, Cell Class 235
- ABS Base per ASTM D4673, Cell Class 0121
- EPDM Seals
- 316 SS Hardware

#### EXPLODED VIEW



#### PATENTED SERVICE-EASE DESIGN

Unique folding ball joint design allows lateral assembly to be easily accessed for simple servicing.

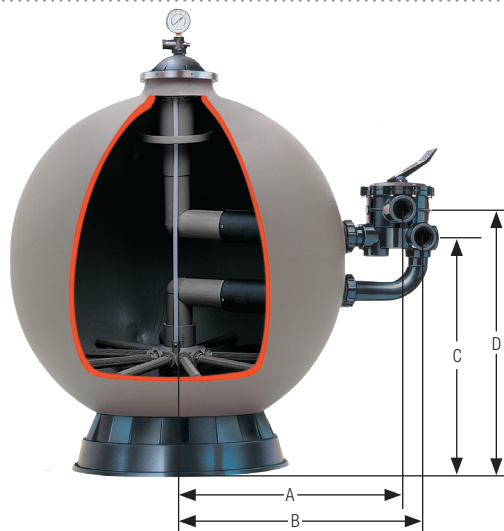


# LS Series Aquatic Sand Filter

31" AND 36" DIAMETERS

## PARTS LIST

- |  |                              |
|--|------------------------------|
| 1. Relief Valve/Gauge Adapter Assembly | 9. Filter Tank               |
| 2. Top Closure Dome                    | 10. Filter Support Stand     |
| 3. Flange Clamp                        | 11. Folding Lateral Assembly |
| 4. Air Tube                            | 12. Lateral                  |
| 5. Top Diffuser Assembly               |                              |
| 6. Bulkhead Fitting Assembly           |                              |
| 7. Vari-Flow Valve Assembly            |                              |
| 8. Elbow Assembly                      |                              |



## DIMENSIONS – INCHES / MILLIMETERS

PART NUMBER	HEIGHT in/mm	WIDTH in/mm	A in/mm	B in/mm	C in/mm	D in/mm
LS311SX	39/990	31/787	21.03/534	23.59/599	21.62/549	24.62/625
LS360SX	46/1169	36/914	23.80/604	26.36/669	25.45/646	28.45/723

Dimensions are approximate. Please check dimensions before installing.

## FILTER PERFORMANCE DATA

PART NUMBER	EFFECTIVE FILTRATION RATE ft/m	DESIGN FLOW RATE gpm/lpm	MAXIMUM WORKING PRESSURE psi/bar	TURNOVER RATE gph/kl	TURNOVER		SAND REQUIRED lbs/kg
					8 HOURS gal/kl	10 HOURS gal/kl	
LS311SX	4.95/0.46	99/375	50/3.45	5,940/23	47,520/180	59,400/225	350/159
LS360SX	6.50/0.60	130/492	50/6.45	7,800/29	62,000/236	78,000/295	700/318

Based upon 20 GPM per ft.<sup>2</sup> (815 LPM per m<sup>2</sup>).

## FILTER SPECIFICATIONS

PART	SPECIFICATION
Filter Type	High-rate sand: No. 2 silica sand (0.45 mm - 0.55 mm)
Filter Tank	Spherical, Molded High Density Polyethylene
Underdrain	360° self-cleaning slotted laterals, precision installed in ball-joint assembly
Control Valve	LS Aquatic 6-Way Multiport Valve
Support Base	Injection-Molded ABS
Performance Range	99 to 130 GPM (375 to 492 LPM)
Port Size	2" NPT
Pressure Rating	50 PSI @ 70°F Non-Shock
Dimensions	LS311SX - 31" W x 38 5/8" H (787 mm x 981 mm) LS360SX - 36" W x 46" H (914 mm x 1168 mm)

## SAMPLE SPECIFICATION

All aquatic sand filters sizes 31" and 36", shall have a filter body made from HD-PE per ASTM D4976, Cell Classification 235. Filter shall include a filter base made from ABS per ASTM D4673, Cell Classification 0121. All seals and O-rings shall be EPDM. All wetted hardware must be 316 stainless steel grade only.

Filter must allow for back-wash capability and include a lid for visual inspection. Inlet and outlet port connections shall be true-union to allow quick installation or maintenance. Multi-port valve to have a minimum of 6-valve settings for operation and maintenance. All ports to be 2" NPT. Filters to be pressure rated at 50 PSI @ 70°F non-shock and have a flow rate range of 99 to 130 GPM.

Filters and valve shall be LS Series manufactured by Hayward Flow Control. Filters shall carry a 2-year warranty.



Hayward is a registered trademark  
of Hayward Industries, Inc.  
© 2014 Hayward Industries, Inc.

NP09014B

Contact Hayward Flow Control with questions:

USA: 1.888.429.4635 • Fax: 1.888.778.8410 • One Hayward Industrial Drive • Clemmons, NC 27012 • Email: [hflow@haywardnet.com](mailto:hflow@haywardnet.com)  
Canada: 1.888.238.7665 • Fax: 1.905.829.3636 • 2880 Plymouth Drive • Oakville, ON L6H 5R4 • Email: [hflowcanada@haywardnet.com](mailto:hflowcanada@haywardnet.com)  
Visit us at: [haywardflowcontrol.com](http://haywardflowcontrol.com)