

NEW PRODUCT PREVIEW

PBV SERIES BACK PRESSURE VALVES

SIZES 1/4" TO 2"

All thermoplastic diaphragm Back Pressure Valve for chemical feed systems, applies back pressure to a metering pump to prevent siphoning and eliminates varying dosage rates resulting from fluctuating downstream pressure. When the preset pressure is exceeded, the diaphragm is forced up and chemical flows through the valve to the injection point. All valves are preset for 50 psi, but are field adjustable via the adjustment screw. Installation should be as close to the injection point as possible to prevent chemical line drainage and it is most important that all chemical system equipment such as pulsation dampeners and pressure gauges are between the pump and back pressure valve.

KEY FEATURES

- PVC, CPVC, PP or PVDF Body, and Noryl™ Molded Dome
- PTFE/EPDM Diaphragm
- Spring: 10 – 150 psi (Spring pre-set: 50 psi)
- 304 Stainless Steel Bolting
- FNPT Threads
- Anti-Siphon Function
- Adjustment Screw with Slot
- PVC, CPVC and PVDF rated to 250 psi @ 70°F/17.2 Bar at 21°C, PP rated to 150 psi @ 70°F/10 Bar at 21°C

OPTIONS

- ANSI or DIN/EN Threaded, Socket, True Union Socket or Flanged End Connections
- 0 - 50 psi and 10 - 250 psi Springs
- PTFE/FPM Diaphragm

TYPICAL APPLICATIONS

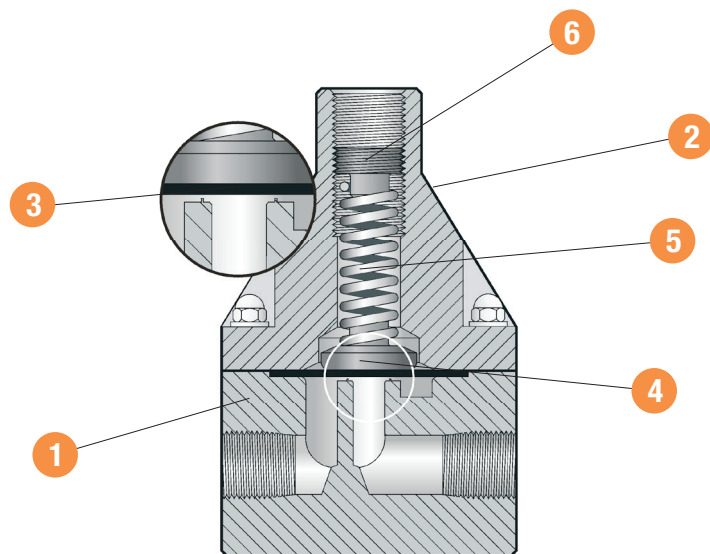
- Chemical Dosing
- Transfer and Processing
- Chlorination Systems

MATERIALS

- PVC Cell Class 12454 per ASTM D1784
- CPVC Cell Class 23447 per ASTM D1784
- PP per ASTM D4101
- PVDF



DETAILED VIEW



PBV Series Back Pressure Valves

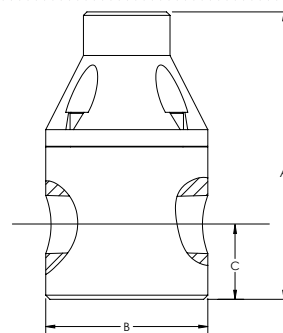
SIZES 1/4" TO 2"

PARTS LIST

1. Valve Body - PVC, CPVC, PP or PVDF
2. Dome - Noryl™
3. Diaphragm - PTFE/EPDM or PTFE/FPM
4. Compressor
5. Spring
6. Adjustment Screw

SPARE PARTS

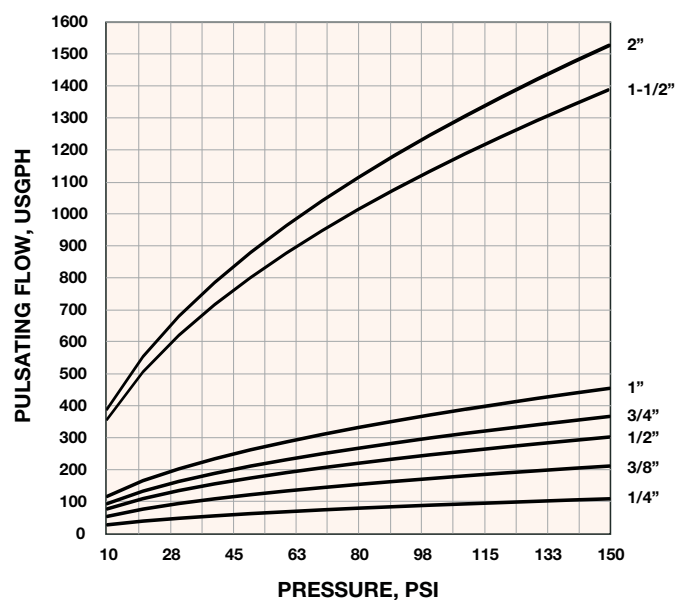
- Diaphragm and Spring
- Rebuild Kit: Diaphragm, Compressor, Adjustment Screw and Spring



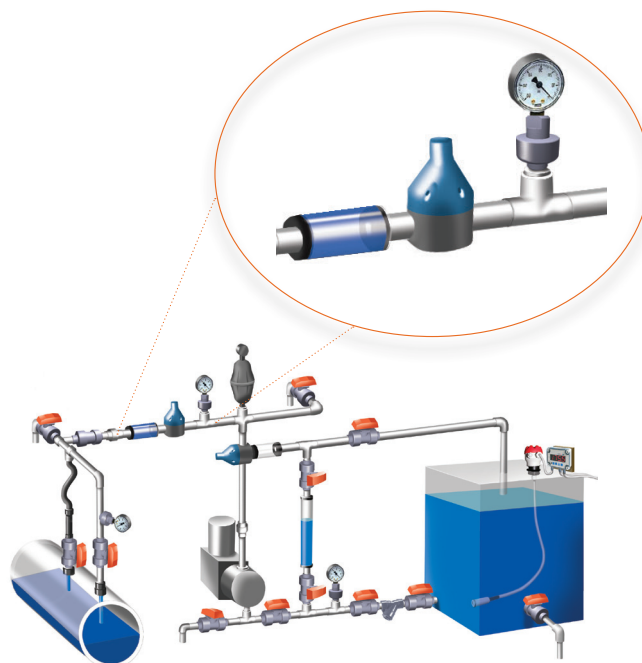
DIMENSIONS (INCHES / MILLIMETERS)

VALVE SIZE in / DN	A in / mm	B in / mm	C in / mm
1/4 / 8	3.55 / 90	2.35 / 60	0.75 / 19
3/8 / 10	3.55 / 90	2.35 / 60	0.75 / 19
1/2 / 15	4.25 / 108	2.35 / 60	1.08 / 27
3/4 / 20	5.56 / 141	3.50 / 89	1.12 / 28
1 / 25	5.86 / 149	3.50 / 89	1.25 / 32
1-1/2 / 40	8.35 / 212	4.90 / 124	1.82 / 46
2 / 50	8.90 / 226	4.90 / 124	2.15 / 55

PERFORMANCE CURVE



SAMPLE INSTALLATION



Hayward is a registered trademark
of Hayward Industries, Inc.
© 2015 Hayward Industries, Inc.

NPPPBV0915

Contact Hayward Flow Control with questions:

USA: 1.888.429.4635 • Fax: 1.888.778.8410 • One Hayward Industrial Drive • Clemmons, NC 27012 • Email: hflow@haywardnet.com
 Canada: 1.888.238.7665 • Fax: 1.905.829.3636 • 2880 Plymouth Drive • Oakville, ON L6H 5R4 • Email: hflowcanada@haywardnet.com
 Visit us at: haywardflowcontrol.com