

PRODUCT INFORMATION PACKET



Model No: 215TTDWD16091
Catalog No: M805B
5,1200,DP,215HPV,3/60/230/460
Vertical Solid Shaft P-Base



Regal and Marathon are trademarks of Regal Beloit Corporation or one of its affiliated companies.
©2018 Regal Beloit Corporation, All Rights Reserved. MC017097E





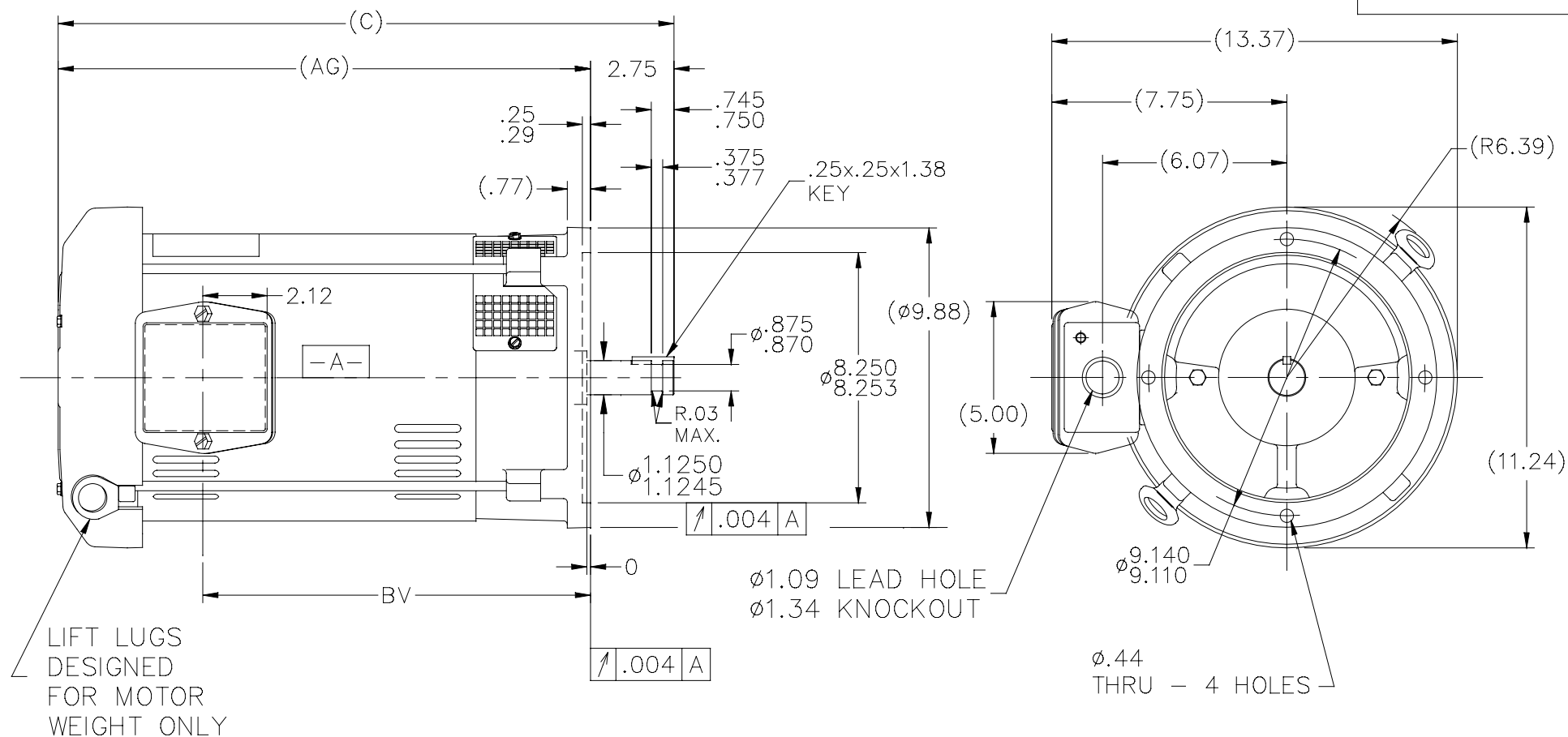
Nameplate Specifications

Output HP	5 Hp	Output KW	3.7 kW
Frequency	60 Hz	Voltage	230/460 V
Current	13.8/6.9 A	Speed	1170 rpm
Service Factor	1.15	Phase	3
Efficiency	89.5 %	Duty	Continuous
Insulation Class	F	Design Code	B
KVA Code	H	Frame	215HPV
Enclosure	Drip Proof	Overload Protector	No
Ambient Temperature	40 °C	Drive End Bearing Size	6309
Opp Drive End Bearing Size	6206	UL	Recognized
CSA	Y	CE	Y
IP Code	22		

Technical Specifications

Electrical Type	Squirrel Cage Induction Run	Starting Method	Across The Line
Poles	6	Rotation	Reversible
Mounting	Round	Motor Orientation	SHAFT DOWN
Drive End Bearing	BALL	Opp Drive End Bearing	BALL
Frame Material	Rolled Steel	Shaft Type	HP
Overall Length	21.55 in	Frame Length	12.40 in
Shaft Diameter	1.125 in	Shaft Extension	2.75 in
Assembly/Box Mounting	F1/F2 CAPABLE		
Outline Drawing	SS86651-1240	Connection Diagram	EE7308

SS86651



DASH	FR.	C	AG	BV	
965	213HP	18.80	16.05	11.28	
1115	213/15HP	20.30	17.55	12.78	
1240	213/15HP	21.55	18.80	14.03	

NOTES:

- NAMEPLATE TO BE READ FROM SHAFT EXT. END OF MOTOR.
- BOX CAN BE MOUNTED IN 90° STEPS.

		TOLERANCES UNLESS SPECIFIED		REGAL TM Regal Beloit America, Inc.		DRAWN PGK 06-10-1997	
NO.	REVISION	BY & DATE	CHK	ANG	FINISH	SIZE	DRAWING NO. PAGE OF REV.
5	REGAL LOGO ADDED.	SYED 10/09/2015				A	SS86651 5
4	UPDATED DRAWING	TJW 04/30/2007	.X	±.1			CHK ML 06-12-1997
3	REDRAWN IN AUTOCAD	TAT 07-22-2004	ML	.XX	±.03		APPD DR 06-24-1997
2	UPDATED C'BOX GEOMETRY CN 28425	DRS 01-12-2000		.XXX	±.005		SCALE 1=5
1	NEW DRAWING	PGK 07-07-1997		.XXXX	±.0005		REF
							FMF
							PREV
THIS DRAWING IN DESIGN AND DETAIL IS OUR PROPERTY AND MUST NOT BE USED EXCEPT IN CONNECTION WITH OUR WORK ALL RIGHTS OF DESIGN AND INVENTION ARE RESERVED THIS IS AN ELECTRONICALLY GENERATED DOCUMENT - DO NOT SCALE THIS PRINT				RFP	CAD FILE ss86651		
				DIST LB			



NO.	REVISION	BY & DATE	CHK	ANG	TOLERANCES UNLESS SPECIFIED	DEC.	INCHES	DRAWN RM	11/20/1990
5	CHG TO REGAL LOGO	SL 09/10/2015	AB					CHK	ML 11/21/1990
4	REVISED IEC NOTATIONS	MSG 11/15/2011	CMN	.X	±.1			APPD	SAS 04/24/2003
3	ADDED IEC NOTATIONS... (U1), (V1) ETC. MU95194	MSG 5/10/2010	MJS	.XX	±.02			SCALE	1=1
2	ADDED THE OPTIONAL CORD CONNECTION MU46318	RDH 04/24/2003	DRS	.XXX	±.005			REF	
1	REDRAWN	RM 11/20/1990		.XXXX	±.0005			FMF	
					±7'30"			PREV	
THIS DRAWING IN DESIGN AND DETAIL IS OUR PROPERTY AND MUST NOT BE USED EXCEPT IN CONNECTION WITH OUR WORK ALL RIGHTS OF DESIGN AND INVENTION ARE RESERVED THIS IS AN ELECTRONICALLY GENERATED DOCUMENT - DO NOT SCALE THIS PRINT						RFP	CAD FILE ee7308	SIZE	DRAWING NO. PAGE OF REV.
						DIST WP		A	EE7308 5