

PRODUCT INFORMATION PACKET



Model No: C6C28DR4 C

Catalog No: 114228.00

1HP..75kW.2850RPM.56H.IP22.110/220V.1PH.50HZ.CONT.NOT.40C.1.25SF.RESIL.50
HERTZ.C6C28DR4C
50 Hz



Regal and Leeson are trademarks of Regal Beloit Corporation or one of its affiliated companies.

©2018 Regal Beloit Corporation, All Rights Reserved. MC017097E

REGAL



Nameplate Specifications

Output HP	1 Hp	Output KW	0.75 kW
Frequency	50 Hz	Voltage	110/220 V
Current	13.2/6.6 A	Speed	2850 rpm
Service Factor	1.25	Phase	1
Efficiency	66 %	Duty	Continuous
Insulation Class	B	Design Code	NO DESIGN CODE
KVA Code	J	Frame	56H
Enclosure	Drip Proof	Overload Protector	No
Ambient Temperature	40 °C	Drive End Bearing Size	6203
Opp Drive End Bearing Size	6203	UL	Recognized
CSA	Y	CE	Y
IP Code	22		

Technical Specifications

Electrical Type	Capacitor Start Induction Run	Starting Method	Across The Line
Poles	2	Rotation	Selective Counterclockwise
Mounting	Resilient Base	Motor Orientation	HORIZONTAL
Drive End Bearing	BALL	Opp Drive End Bearing	BALL
Frame Material	Rolled Steel	Shaft Type	NEMA 56
Overall Length	11.79 in	Frame Length	6.00 in
Shaft Diameter	0.625 in	Shaft Extension	1.88 in
Assembly/Box Mounting	F1 ONLY		
Outline Drawing	028619-600B	Connection Diagram	005390.01

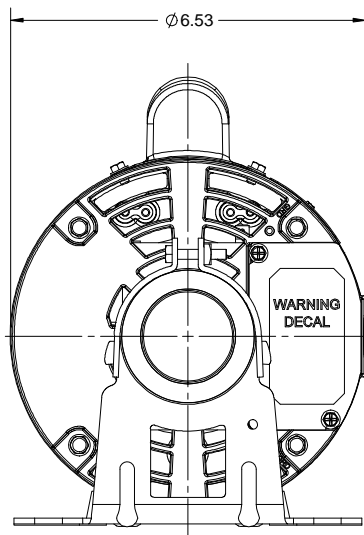
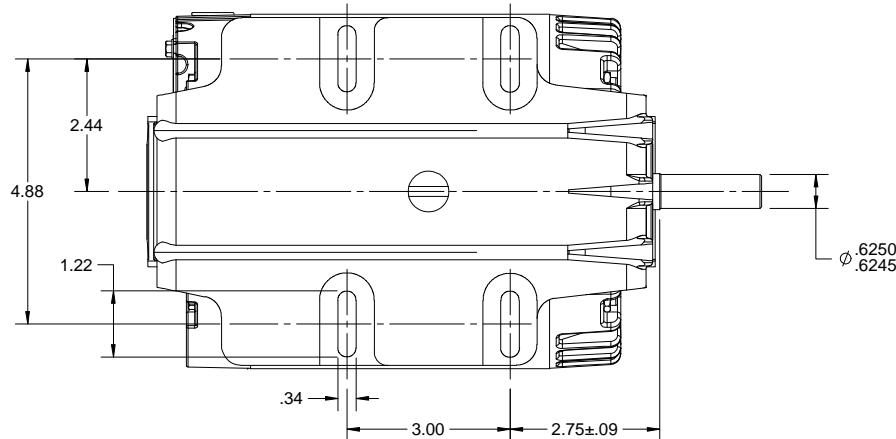
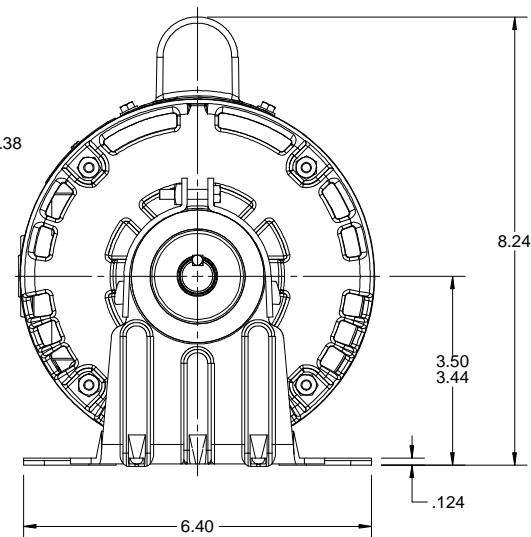
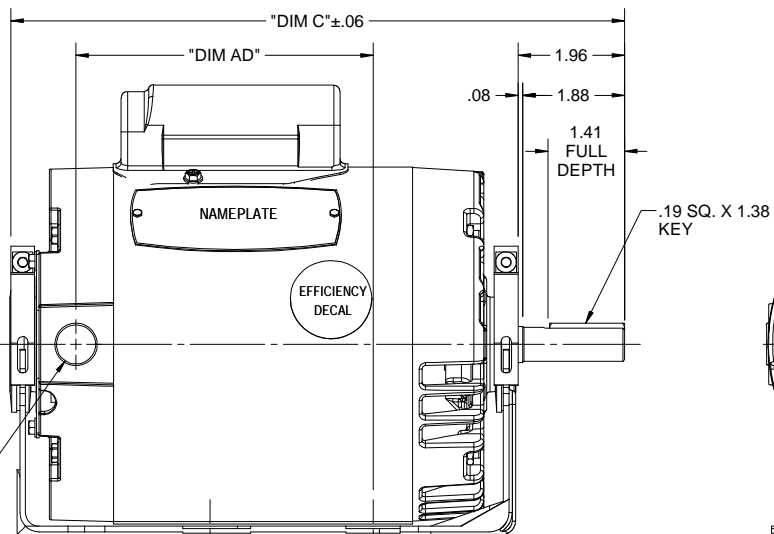
4

3

Uncontrolled Copy

2

1


1/2-14 NPT
PLUGGED

DASH NO.	"DIM C"	"DIM AD"
500	10.79	4.97
550	11.29	5.47
600	11.79	5.97
650	12.29	6.47

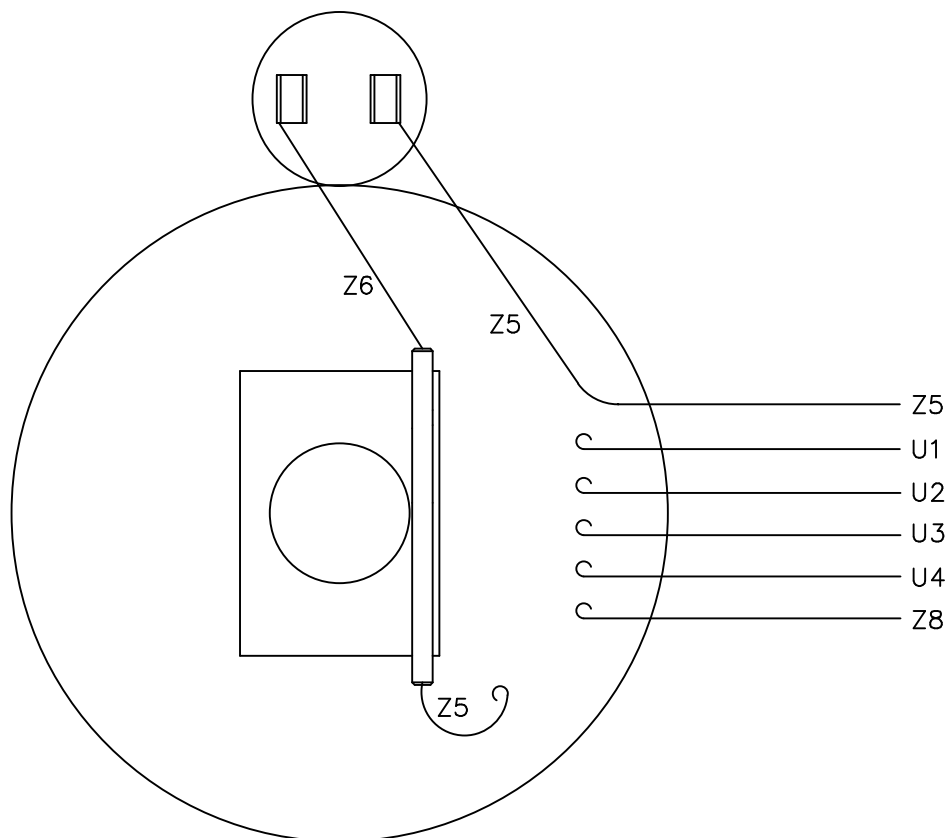
DRAWING REVISION	REVISION BY	DATE
A	P. GASSER	
ECO	APPROVED BY	DATE
ECO-0128249		
ECO DESCRIPTION		
REDRAWN IN SOLIDWORKS		
COPYRIGHT REGAL BELOIT AMERICA, INC. ALL RIGHTS RESERVED. PROPRIETARY AND CONFIDENTIAL INFORMATION - THIS DOCUMENT IS THE PROPERTY OF REGAL BELOIT AMERICA, INC. (OWNER) AND CONTAINS OWNER'S PROPRIETARY INFORMATION. ANY PERSON, CORPORATION OR OTHER FIRM RECEIVING IT IS DEEMED, BY RECEIVING IT, TO AGREE THAT IT, AND/OR ANY PART OF IT, SHALL NOT BE DISCLOSED TO ANY PERSON, CORPORATION OR OTHER ENTITY, DUPLICATED, AND/OR USED, EXCEPT AS EXPRESSLY APPROVED IN WRITING IN ADVANCE BY OWNER. THIS DOCUMENT SHALL BE RETURNED TO OWNER UPON REQUEST. IT MAY BE SUBJECT TO CERTAIN RESTRICTIONS UNDER APPLICABLE EXPORT CONTROL LAWS AND REGULATIONS.		

TOLERANCES UNLESS OTHERWISE SPECIFIED:			
DEC.	INCH	mm	ANGLE
.X	±0.1	[±2.5]	±0.5°
.XX	±0.03	[±0.76]	
.XXX	±0.005	[±0.127]	
.XXXX	±0.0005	[±0.0127]	
REMOVE BURRS & BREAK SHARP			
EDGES: .003/.015 [.076/.381] X 45°			
CORNER FILLETS: R.02 [.51]			
MACHINED SURFACES: 125/3.2			
mm SHOWN IN [BRACKETS]			

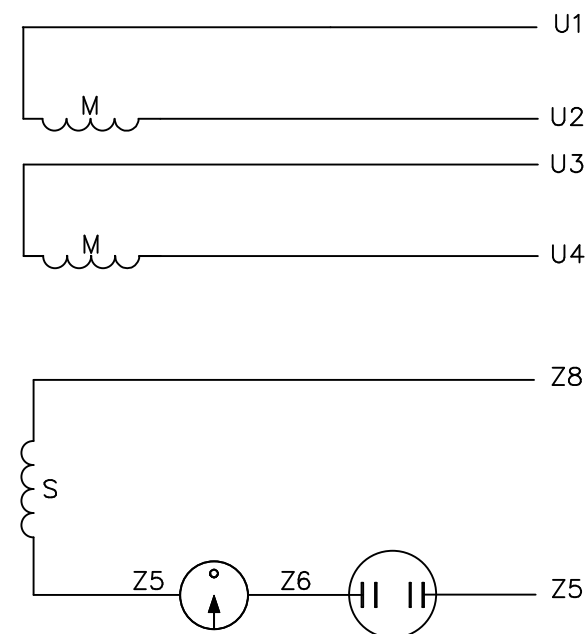
DRAWN BY	DATE
R. WEBER	07/28/04
APPROVED BY	DATE
REFERENCE	THIRD ANGLE PROJECTION

 Regal Beloit America, Inc.	
DESCRIPTION	
OUTLINE	
56-FRAME, DRIP PROOF, RESILIENT MOUNT	
MATERIAL	PROCESS/FINISH
SIZE B	DRAWING NUMBER 028619
	SHEET 1 OF 1


VIEW FROM OUTSIDE OF MOTOR AT SWITCH END.



LINE LEADS



	ROTATION FACING LEAD END	L1	L2	JOIN
HIGH VOLT	C.C.W.	U1	U4 Z5	U2,U3 Z8
	C.W.	U1	U4 Z8	U2,U3 Z5
LOW VOLT	C.C.W.	U1,U3 Z8	U2,U4 Z5	---
	C.W.	U1,U3 Z5	U2,U4 Z8	---

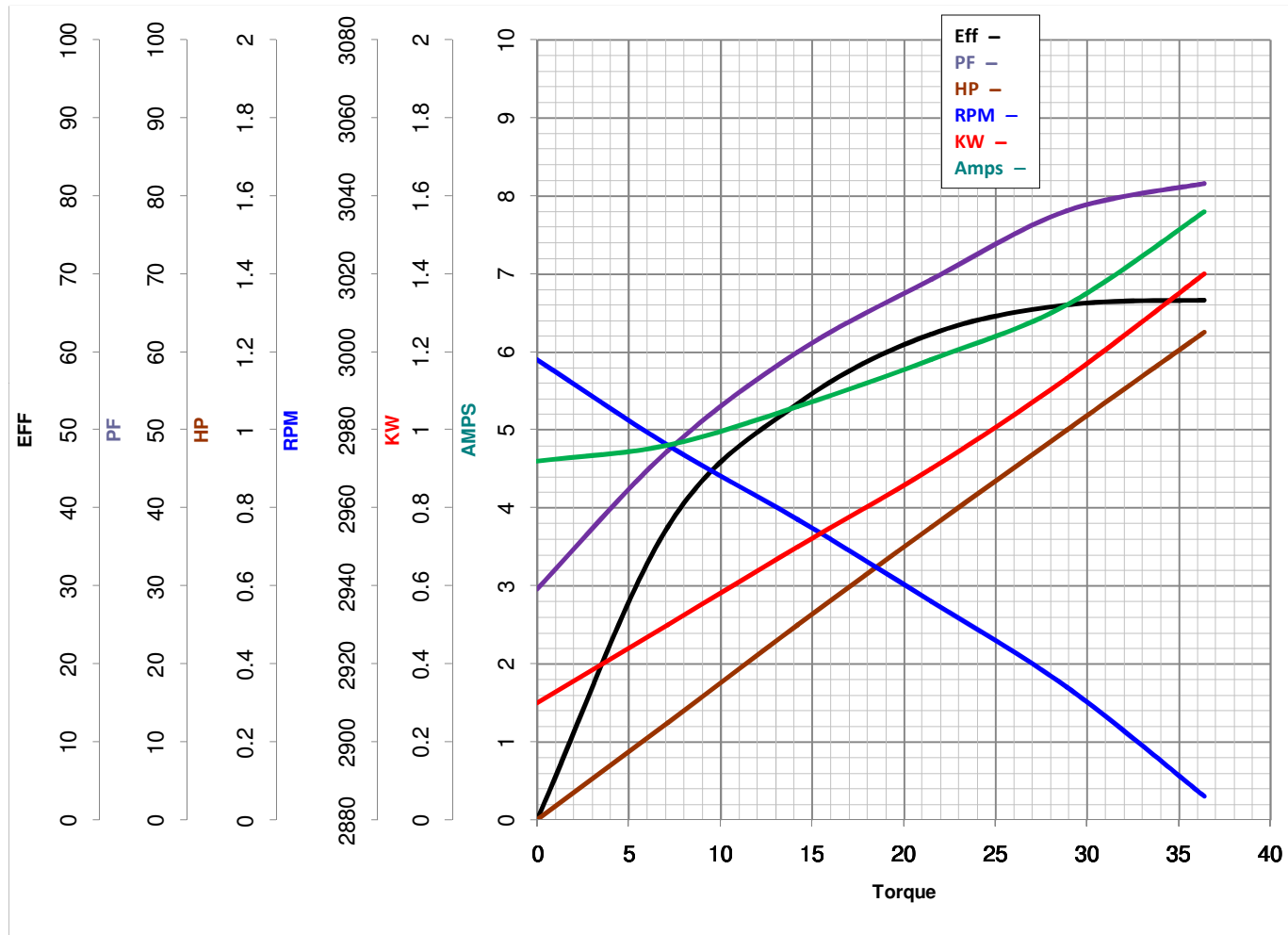
				TOLERANCES UNLESS SPECIFIED			ELECTRIC MOTORS GEARMOTORS AND DRIVES		DRAWN RSK 09/09/96	
				DEC.	INCHES				CHK	
				.X	±.1				APPD	
				.XX	±.01		TITLE		SCALE	1=1
				.XXX	±.005		EXTERNAL WIRING DIAGRAM TYPE "C" W/O PROTECTOR		REF	005005-01
				.XXXX	±.0005	MAT'L.	DECAL - 080642		FMF	114964.00
NO.	REVISION	BY & DATE	CHK	ANG	±1/2"	FINISH	LEESON CANADA		PREV	
THIS DRAWING IN DESIGN AND DETAIL IS OUR PROPERTY AND MUST NOT BE USED EXCEPT IN CONNECTION WITH OUR WORK ALL RIGHTS OF DESIGN AND INVENTION ARE RESERVED THIS IS AN ELECTRONICALLY GENERATED DOCUMENT - DO NOT SCALE THIS PRINT				RFP		CAD FILE	00539001		SIZE	DRAWING NO.
				DIST					A	005390-01
										REV.



LEESON ELECTRIC CORPORATION

TYPICAL PERFORMANCE CURVE for AC MOTOR

Model No 114228.00Curve at 220
50
1Volts
HZ
HPHP 1.00

VOLTS 110/220PHASE 1Catalog No 114228.00HZ 50RPM 2850

Torque in Oz.Ft

FL TORQUE 28.9 Oz.Ft
 BD TORQUE 80.0 Oz.Ft
 LR TORQUE 80 Oz.Ft

FL AMPS 13.2/6.6
 PU TORQUE 82.0 Oz.Ft
 LR AMPS 33

WINDING C632241-4

Date 3/20/2018