

PRODUCT INFORMATION PACKET



Model No: C6C14DR17D

Catalog No: 114229.00

..1HP..1425RPM.56H.IP22.110/220v.1PH.50HZ.CONT.40C.1.15SF.RESILIENT.C6C14DR17D.....50
HERTZ.NOT.....75kW...

50 Hz



Regal and Leeson are trademarks of Regal Beloit Corporation or one of its affiliated companies.

©2018 Regal Beloit Corporation, All Rights Reserved. MC017097E

REGAL



Nameplate Specifications

Output HP	1 Hp	Output KW	0.75 kW
Frequency	50 Hz	Voltage	110/220 V
Current	12.8/6.4 A	Speed	1425 rpm
Service Factor	1.15	Phase	1
Efficiency	73 %	Duty	Continuous
Insulation Class	B	Design Code	L
KVA Code	J	Frame	F56H
Enclosure	Drip Proof	Overload Protector	No
Ambient Temperature	40 °C	Drive End Bearing Size	6203
Opp Drive End Bearing Size	6203	UL	Recognized
CSA	Y	CE	Y
IP Code	22		

Technical Specifications

Electrical Type	Capacitor Start Induction Run	Starting Method	Across The Line
Poles	4	Rotation	Selective Counterclockwise
Mounting	Resilient Base	Motor Orientation	HORIZONTAL
Drive End Bearing	BALL	Opp Drive End Bearing	BALL
Frame Material	Rolled Steel	Shaft Type	NEMA 56
Overall Length	12.31 in	Frame Length	6.50 in
Shaft Diameter	0.625 in	Shaft Extension	1.88 in
Assembly/Box Mounting	F1 ONLY		
Outline Drawing	029089-F56	Connection Diagram	005390.03

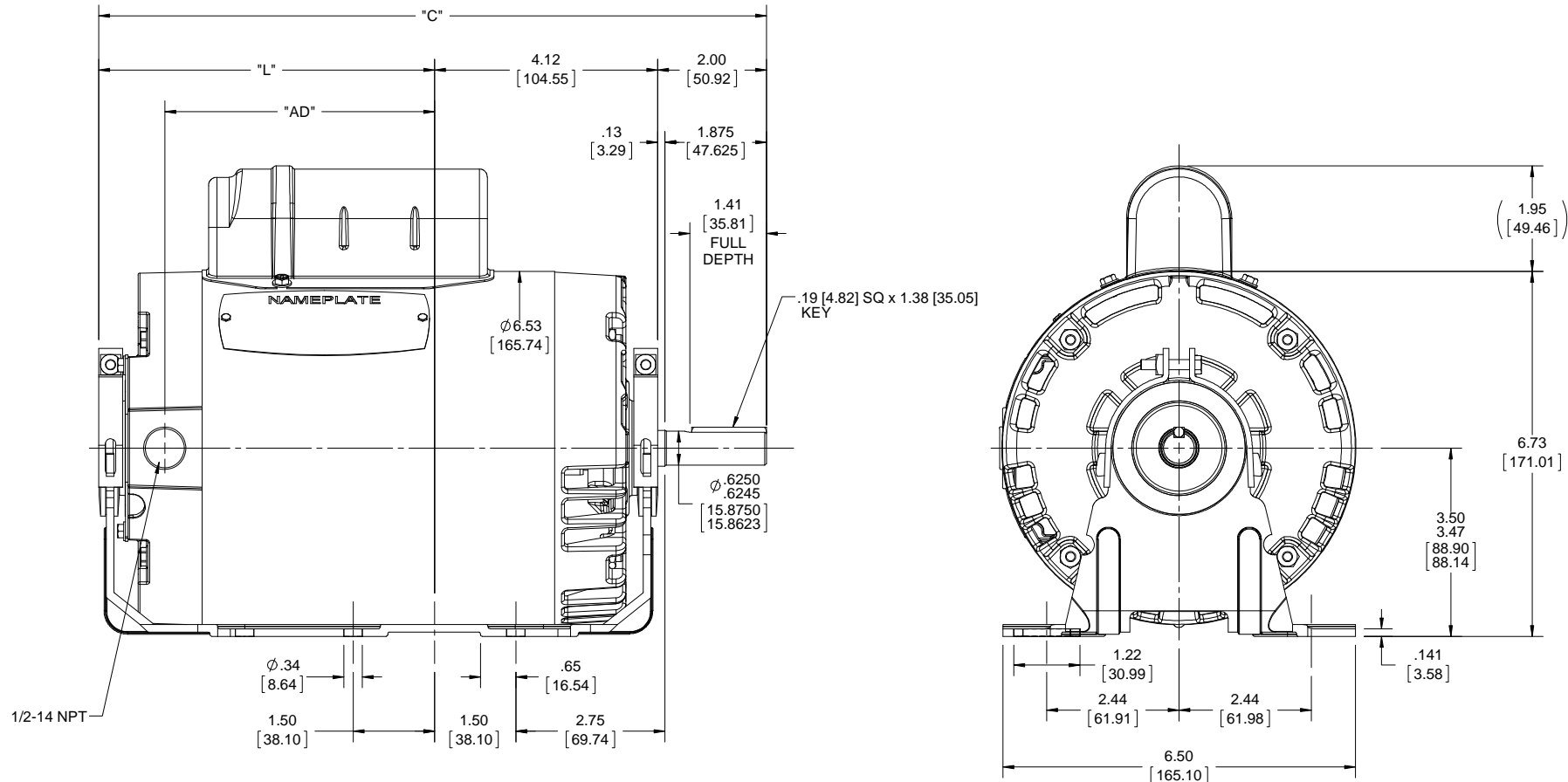
4

3


Uncontrolled Copy

2

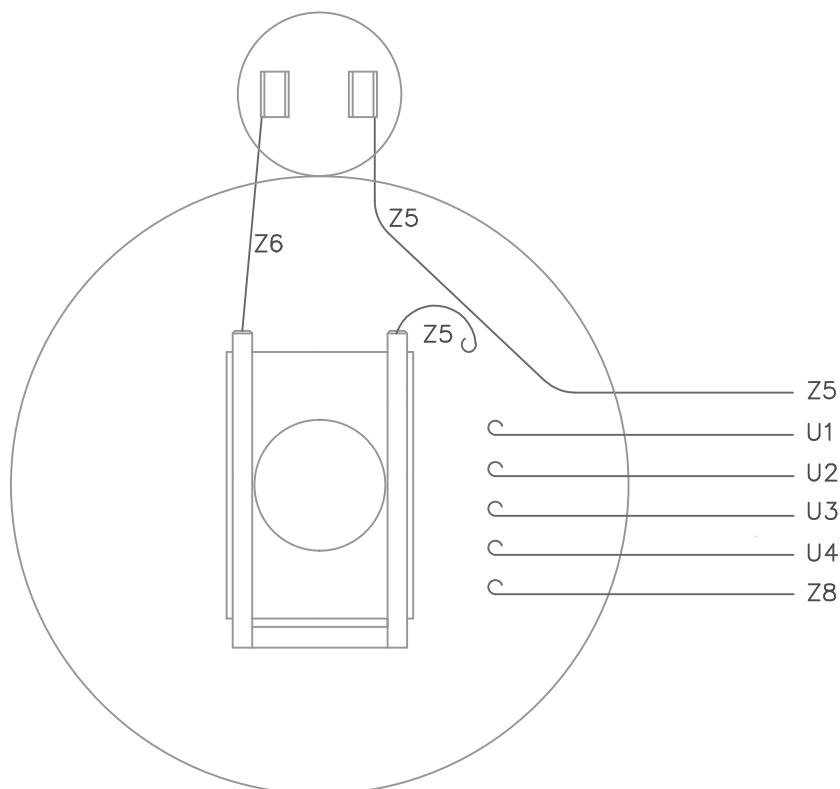
1



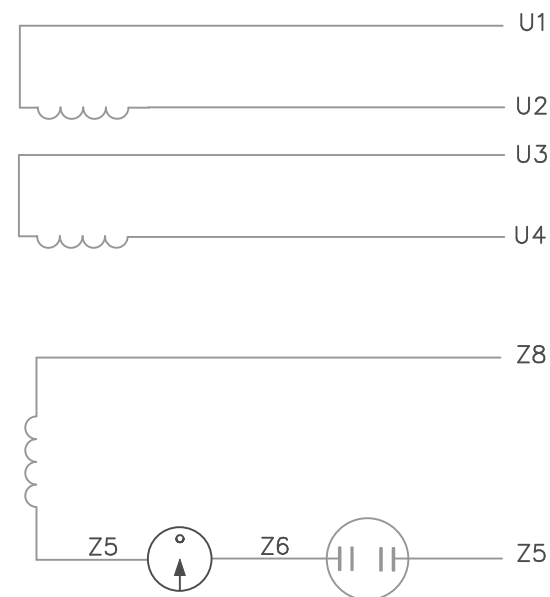
FRAME	"C"	"L"	"AD"
F56	12.31 [312.67]	6.19 [157.22]	4.97 [126.23]
G56	12.81 [325.37]	6.69 [169.92]	5.47 [138.93]

DRAWING REVISION A	REVISION BY	DATE	TOLERANCES UNLESS OTHERWISE SPECIFIED:	DRAWN BY H. ADIKE	 Regal Beloit America, Inc.
ECO-0136357	APPROVED BY	DATE	DEC. INCH mm ANGLE .X \pm 0.1 [2.5] \pm 7° 30' .XX \pm 0.03 [0.76] .XXX \pm 0.005 [0.127] .XXXX \pm 0.0005 [0.0127]	DATE 2/15/2018	
ECO DESCRIPTION OUTLINE CONVERSION PROJECT			REMOVE BURRS & BREAK SHARP EDGES: .003/.015 [0.076/.381] X 45° CORNER FILLETS: R.02 [51]	APPROVED BY PK	
<small>COPYRIGHT REGAL BELOIT AMERICA, INC. ALL RIGHTS RESERVED. PROPRIETARY AND CONFIDENTIAL INFORMATION - THIS DOCUMENT IS THE PROPERTY OF REGAL BELOIT AMERICA, INC. (OWNER) AND CONTAINS OWNER'S PROPRIETARY INFORMATION. ANY PERSON, CORPORATION OR OTHER FIRM RECEIVING IT IS DEEMED, BY RECEIVING IT, TO AGREE THAT IT, AND/OR ANY PART OF IT, SHALL NOT BE DISCLOSED TO ANY PERSON, CORPORATION OR OTHER ENTITY, DUPLICATED, AND/OR USED, EXCEPT AS EXPRESSLY APPROVED IN WRITING IN ADVANCE BY OWNER. THIS DOCUMENT SHALL BE RETURNED TO OWNER UPON REQUEST. IT MAY BE SUBJECT TO CERTAIN RESTRICTIONS UNDER APPLICABLE EXPORT CONTROL LAWS AND REGULATIONS.</small>			MACHINED SURFACES: 200 INCH mm 5.1 mm SHOWN IN [BRACKETS]	DATE 5/23/2018	
				REFERENCE 032510	DESCRIPTION 56 FRAME. OPEN DRIP PROOF - RESIL. BASE
				THIRD ANGLE PROJECTION	MATERIAL
				SIZE B	PROCESS/FINISH
				DRAWING NUMBER 029089	SHEET 1 OF 1

005390-03



LINE LEADS



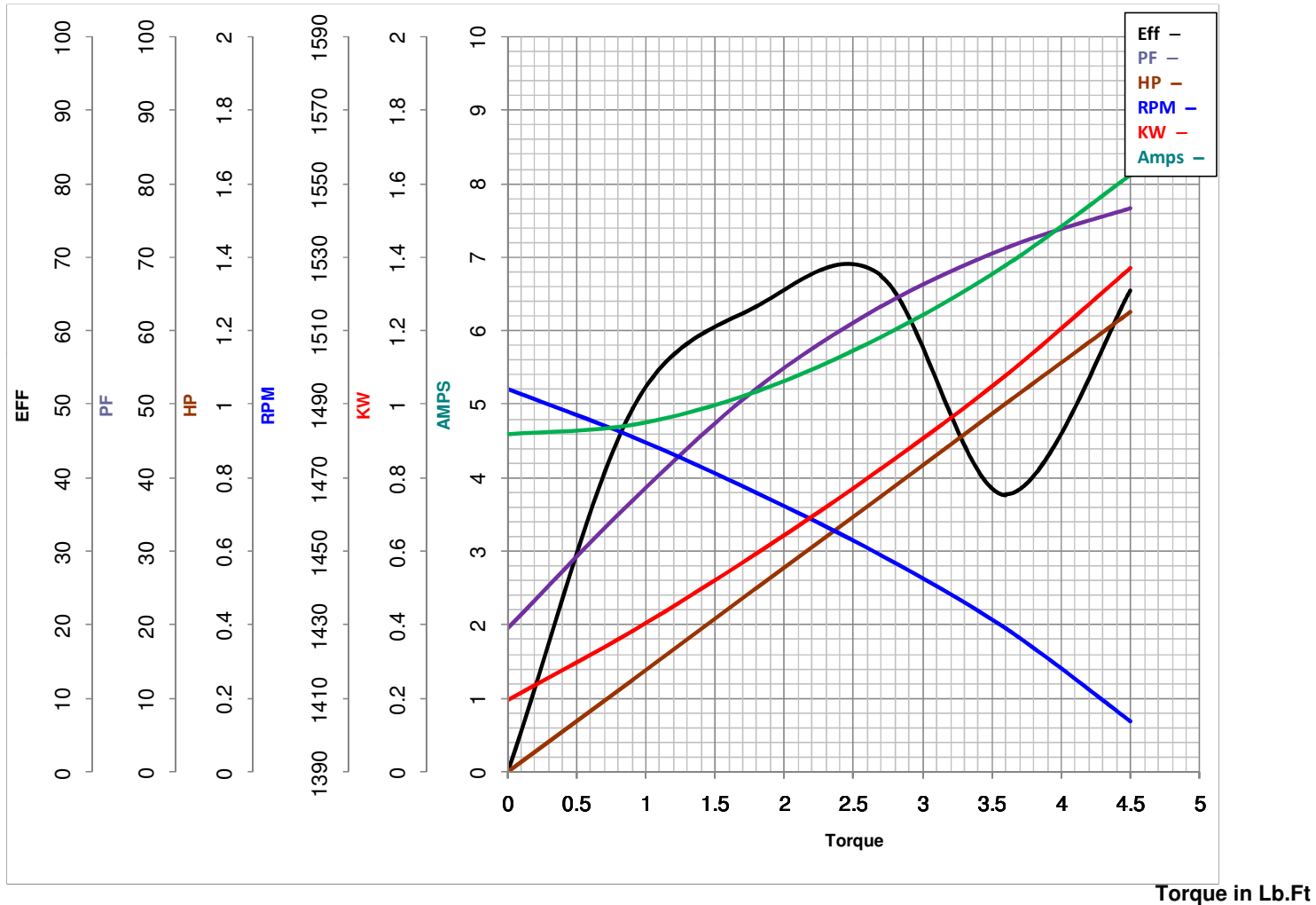
	ROTATION FACING LEAD END	L1	L2	JOIN & INSULATE
HIGH VOLT	C.C.W.	U1	U4,Z5	U2,U3 Z8
	C.W.	U1	U4,Z8	U2,U3 Z5
LOW VOLT	C.C.W.	U1,U3 Z8	U2,U4 Z5	----
	C.W.	U1,U3 Z5	U2,U4 Z8	----

				TOLERANCES UNLESS OTHERWISE SPECIFIED		LEESON ELECTRIC CORPORATION					
				DECIMALS							
				.00	± .01	DRAWN DBT 7/21/97	TITLE EXTERNAL WIRING DIAGRAM TYPE "C" W/O PROTECTOR				
				.000	± .005	CH'K'D.					
				.0000	± .0005	APPR.	MAT'L. DECAL — 080642 I.E.C. MARKINGS				
NO.	REVISION		BY	DATE	FRACTIONS	± 1/64				SCALE 1=1	
THIS DRAWING IN DESIGN AND DETAIL IS OUR PROPERTY AND MUST NOT BE USED EXCEPT IN CONNECTION WITH OUR WORK ALL RIGHTS OF DESIGN AND INVENTION ARE RESERVED					ANGLES	± 1/2'	REF. 005390—01	FINISH		SIZE A	DRAWING NO. 005390—03
					INCH/MM		FMF				



LEESON ELECTRIC CORPORATION

TYPICAL PERFORMANCE CURVE for AC MOTOR

Model No 114229.00Curve at 220
50
1Volts
HZ
HPHP 1.00PHASE 1VOLTS 110/220Catalog No 114229.00HZ 50RPM 1425

FL TORQUE 3.6 Lb.Ft
 BD TORQUE 8.2 Lb.Ft
 LR TORQUE 9 Lb.Ft

FL AMPS 12.8/6.4
 PU TORQUE 4.4 Lb.Ft
 LR AMPS 28.62

WINDING C634266-4

Date 3/14/2018