

PRODUCT INFORMATION PACKET



Model No: C215T17FK20AA

Catalog No: 170167.60

..10HP..1800RPM.215TC.TEFC.230/460V.3PH.60HZ.CONT.40C.1.15SF.RIGID-C.....

Totally Enclosed Fan Cooled (TEFC)



Regal and Leeson are trademarks of Regal Beloit Corporation or one of its affiliated companies.

©2018 Regal Beloit Corporation, All Rights Reserved. MC017097E





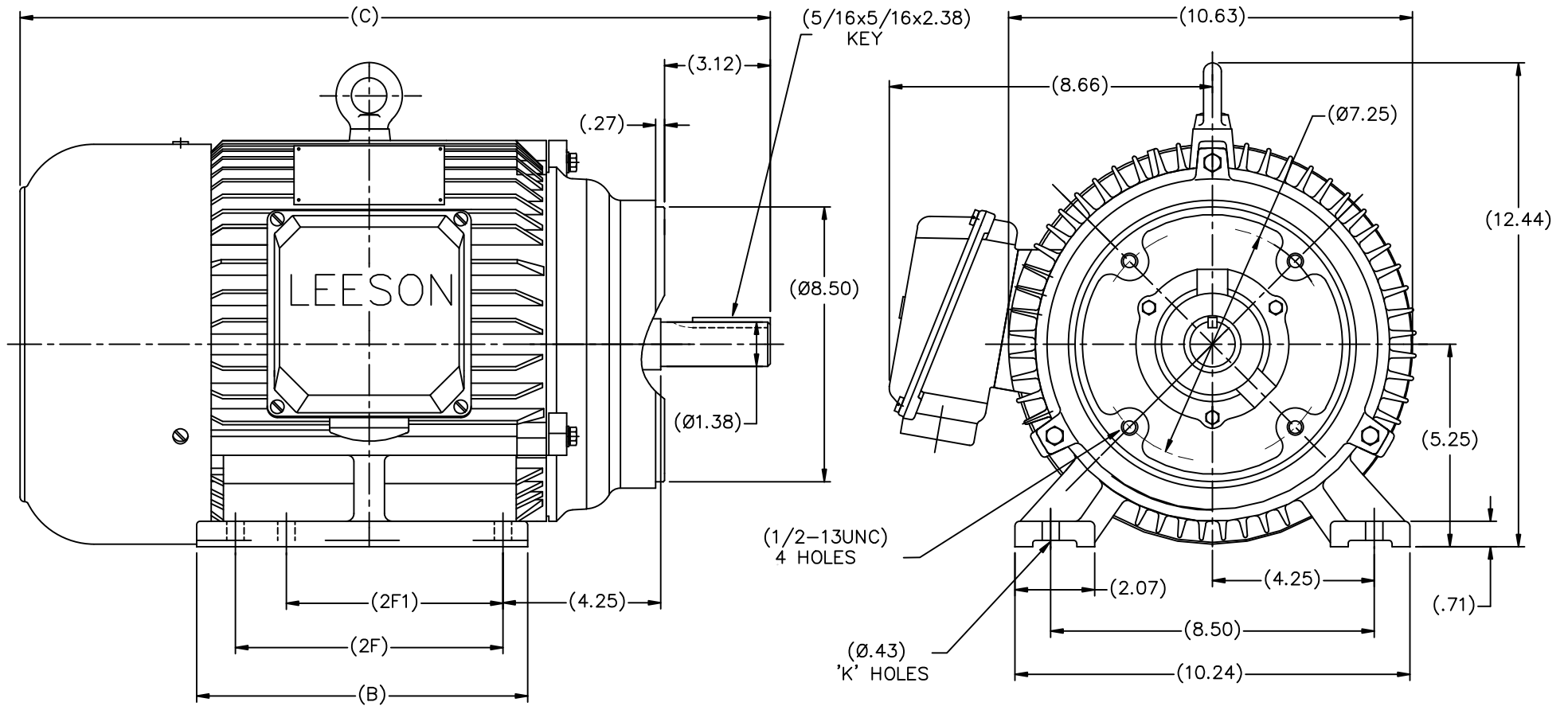
Nameplate Specifications

Output HP	10 Hp	Output KW	7.5 kW
Frequency	60 Hz	Voltage	208-230/460 V
Current	27.0-25.0/12.5 A	Speed	1760 rpm
Service Factor	1.15	Phase	3
Efficiency	91.7 %	Duty	Continuous
Insulation Class	F	Design Code	B
KVA Code	H	Frame	215TC
Enclosure	Totally Enclosed Fan Cooled	Overload Protector	No
Ambient Temperature	40 °C	Drive End Bearing Size	6308
Opp Drive End Bearing Size	6306	UL	Recognized
CSA	Y	CE	N
IP Code	43		

Technical Specifications

Electrical Type	Squirrel Cage Inverter Rated	Starting Method	Line Or Inverter
Poles	4	Rotation	Reversible
Mounting	Rigid base	Motor Orientation	HORIZONTAL
Drive End Bearing	BALL	Opp Drive End Bearing	BALL
Frame Material	Cast Iron	Shaft Type	T
Overall Length	20.35 in	Shaft Diameter	1.375 in
Shaft Extension	3.38 in	Assembly/Box Mounting	F1/F2 CAPABLE
Outline Drawing	B-SS622294	Connection Diagram	00501020

This is an uncontrolled document once printed or downloaded and is subject to change without notice. Date Created: 10/15/2018



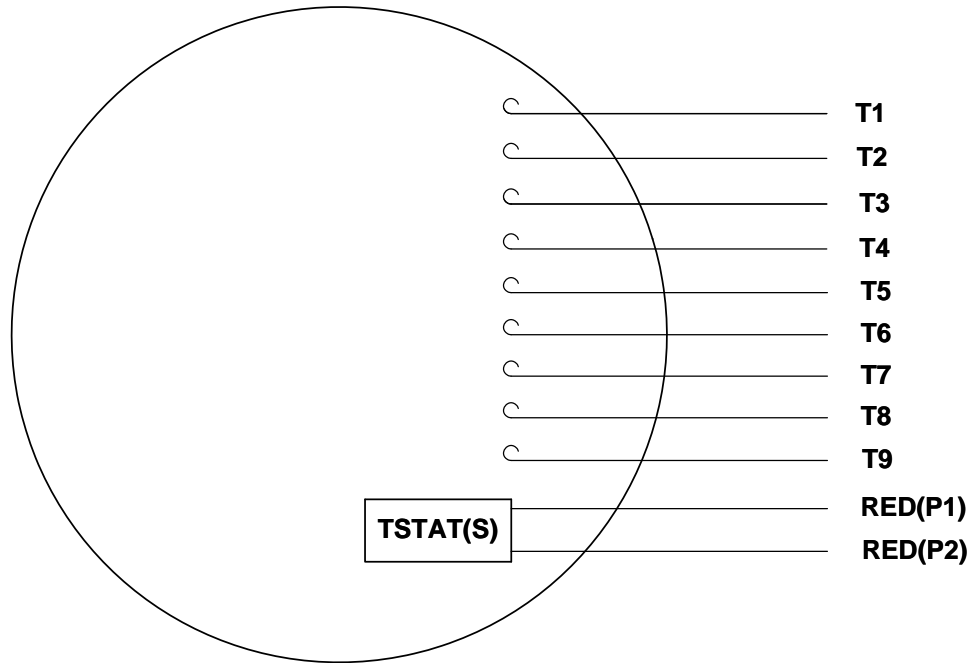
Cat. No.	FRAME	B	C	2F	2F1	K
170166.60	N213TC-2W2	7.32	18.94	5.50	5.50	4
170168.60	N215TC-4W2	8.82	20.35	7.00	5.50	6
170165.60	N213TC-4W2	7.32	18.94	5.50	5.50	4
170167.60	N215TC-4W2	8.82	20.35	7.00	5.50	6
171116.60	N215TC-6W2	8.82	20.35	7.00	5.50	6

DRAWING NOT TO SCALE

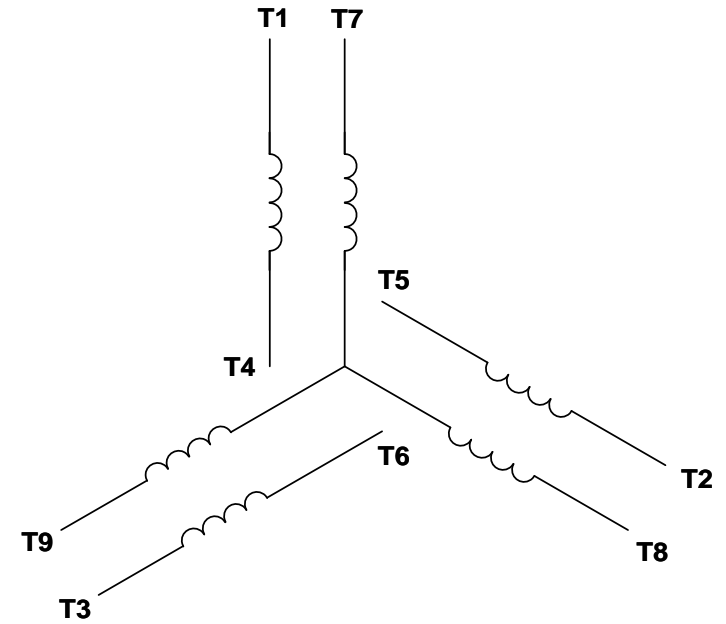
TOLERANCES UNLESS SPECIFIED		DEC. INCHES		TITLE		DRAWN MQL 03-07-2011	
.X	±.1	.XX	±.03	OUTLINE	LEESON ELECTRIC MOTORS GEARMOTORS AND DRIVES	CHK	MQL 03-07-2011
.XXX	±.005	.XXX	±.005	N210TC FR-2,4,6-W2- C'FACE - TEFC	SCALE 1=4	APPD	SB 03-07-2011
.XXXX	±.0005	MAT'L				REF	
NO.	REVISION	BY & DATE	CHK	ANG ±7'30"	FINISH	PREV	
THIS DRAWING IN DESIGN AND DETAIL IS OUR PROPERTY AND MUST NOT BE USED EXCEPT IN CONNECTION WITH OUR WORK. ALL RIGHTS OF DESIGN AND INVENTION ARE RESERVED. THIS IS AN ELECTRONICALLY GENERATED DOCUMENT - DO NOT SCALE THIS PRINT				RFP	CAD FILE SS622294	SIZE B	DRAWING NO. PAGE OF REV. SS622294
				DIST			

VIEW FROM OUTSIDE OF MOTOR AT SWITCH END.

Uncontrolled Copy



LINE LEADS



VOLTAGE	L1	L2	L3	JOIN & INSULATE
HIGH	T1	T2	T3	(T4,T7) (T5,T8) (T6,T9)
LOW	T1,T7	T2,T8	T3,T9	T4,T5,T6

DRAWING REVISION G	REVISION BY MVG	DATE 04/05/2017
ECO ECO-0121253	APPROVED BY SM	DATE 04/05/2017

ECO DESCRIPTION
ADDED P1 & P2 FOR TSTAT

TOLERANCES UNLESS OTHERWISE SPECIFIED:

DEC.	INCH	mm	ANGLE
.X	±0.1	[±2.5]	±0.5°
.XX	±0.01	[±0.25]	
.XXX	±0.005	[±0.127]	
.XXXX	±0.0005	[±0.0127]	

REMOVE BURRS & BREAK SHARP EDGES: .003/.015 [.076/.381] X 45°
CORNER FILLETS: R.02 [.51]
MACHINED SURFACES: 125/3.2 INCH/mm

mm SHOWN IN [BRACKETS]

DRAWN BY
DBT 12/16/97

DATE

APPROVED BY
KH 12/17/97

DATE

REFERENCE

THIRD ANGLE PROJECTION



Regal Beloit America, Inc.

DESCRIPTION
CONN DIAGRAM-EXTERNAL
3 PHASE WITH PROTECTOR

MATERIAL
DECAL - 004014 (TSTAT) - 080582

PROCESS/FINISH
STOCK

SIZE
A

DRAWING NUMBER
00501020

SHEET
1 OF 1