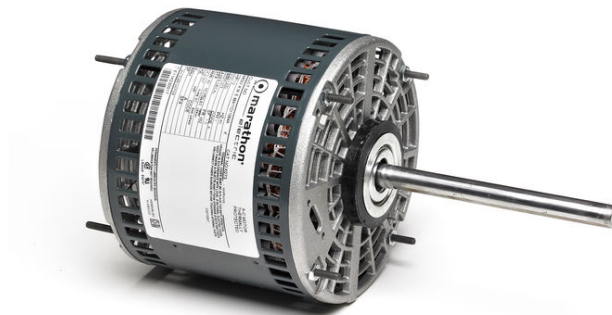


PRODUCT INFORMATION PACKET

marathon[®]
Motors

Model No: 048A11O11066
Catalog No: X077
1/2,1075,OPAO,48Y,1/60/115
Direct Drive



Regal and Marathon are trademarks of Regal Beloit Corporation or one of its affiliated companies.
©2018 Regal Beloit Corporation, All Rights Reserved. MC017097E

REGAL[®]



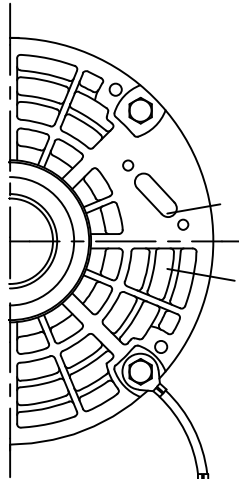
Nameplate Specifications

Output HP	0.5 Hp	Output KW	0.37 kW
Frequency	60 Hz	Voltage	115 V
Current	6.1 A	Speed	1075 rpm
Service Factor	1	Phase	1
Efficiency	64 %	Duty	CONTINUOUS
Insulation Class	B	Design Code	NO DESIGN CODE
KVA Code	A	Frame	48Y
Enclosure	OPAO	Overload Protector	AUT LCK RTR ONLY
Ambient Temperature	40 °C	Drive End Bearing Size	6203
Opp Drive End Bearing Size	6203	UL	Recognized
CSA	N	CE	N
IP Code	10		

Technical Specifications

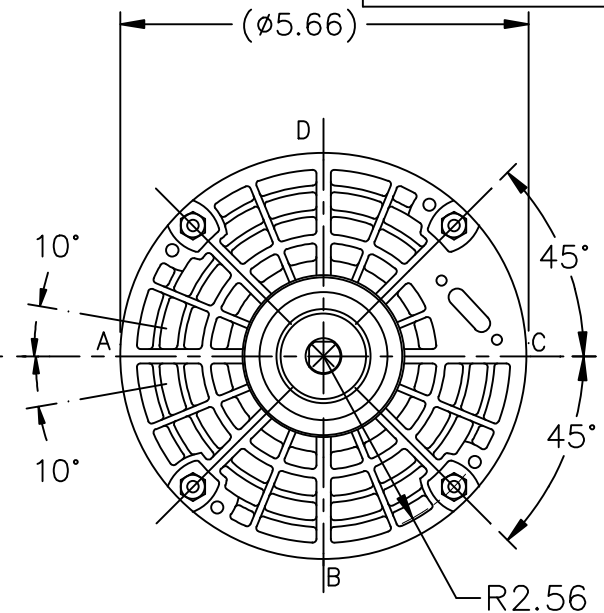
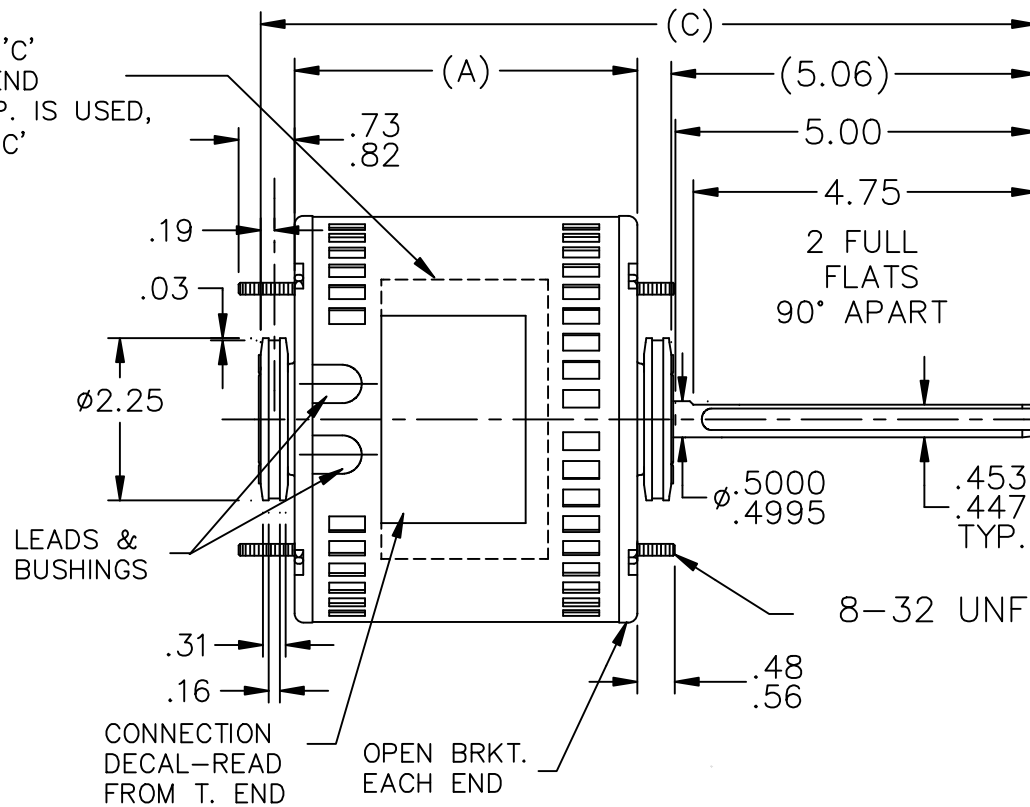
Electrical Type	PSC 4 SPEED	Starting Method	ACROSS THE LINE
Poles	6	Rotation	SELECTIVE CCW
Mounting	RESILIENT RING-EXTENDED STUDS	Motor Orientation	HORIZONTAL
Drive End Bearing	BALL	Opp Drive End Bearing	BALL
Frame Material	ROLLED STEEL	Shaft Type	SGL SPL EXT
Overall Length	11 in	Frame Length	4.5 in
Shaft Diameter	0.5 in	Shaft Extension	5.06 in
Assembly/Box Mounting	F1 ONLY		
Outline Drawing	A-SS403887-450	Connection Diagram	6906485

NAMEPLATE LOC. @ 'C'
READ FROM TERM. END
WHEN TWO PART N.P. IS USED,
CENTER PIECES AT 'C'



GROUND
LEAD

TERM. END



LEAD DESCRIPTION:

DASH	FR.	C	A
425	48Y	10.75	4.75
450	48Y	11.00	5.00

1 WHITE, 1 BLACK, 1 BLUE, 1 RED, & 1 ORANGE LEAD WITH
.25 FLAG-TYPE QUICK CONNECTS 36.00" LONG.
1 BROWN & WHITE AND
1 BROWN LEAD WITH .25 FLAG-TYPE QUICK
CONNECTS 36.00" LONG.

REVERSING LEADS ARE MOLDED INTO MATING
PULL-APART PLUGS. 1 YELLOW & 1 PURPLE
LEAD PER PLUG. 6.00" LONG.

GREEN GROUND LEAD WITH TERM. FOR
#10 SCREW 12.00" LONG.

WHITE ————— L1
BLACK — HIGH
BLUE — MED HIGH
ORANGE — MED LOW
RED — LOW

ROTATION — SHAFT END
PURPLE — CCW
YELLOW — CCW
PURPLE — CW
YELLOW — CW

INSULATE UNUSED SPEED
TAP LEADS SEPARATELY. BROWN/WHITE — CAP.

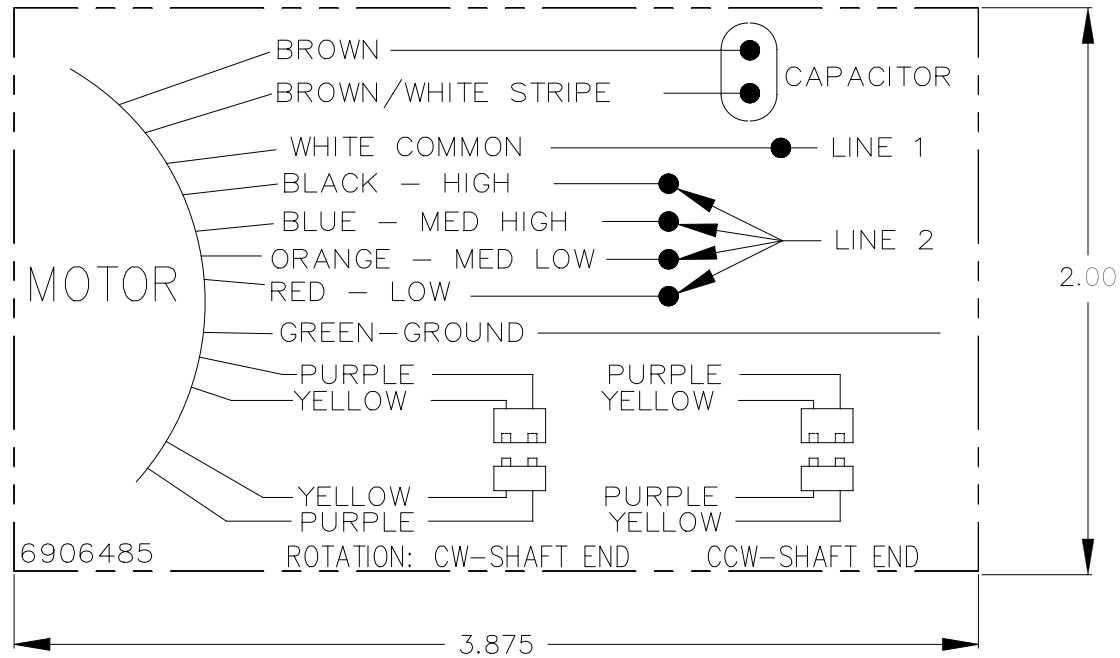
		TOLERANCES UNLESS SPECIFIED	
		DEC.	INCHES
		.X	±.1
		.XX	±.03
		.XXX	±.005
		.XXXX	±.0005
NO.	REVISION	CHK	ANG ±.7'30"


		DRAWN	NB 12/29/09
		CHK	NB 12/29/09
		APPD	NB 12/29/09
		SCALE	3=8
		REF	SS403373
TITLE OUTLINE		FMF	048A11011066
MAT'L.		PREV	
FINISH			

THIS DRAWING IN DESIGN AND DETAIL IS OUR PROPERTY AND MUST NOT BE USED EXCEPT
IN CONNECTION WITH OUR WORK ALL RIGHTS OF DESIGN AND INVENTION ARE RESERVED
THIS IS AN ELECTRONICALLY GENERATED DOCUMENT — DO NOT SCALE THIS PRINT

RFP	CAD FILE	ss403373	SIZE	DRAWING NO.	PAGE	OF	REV.
DIST	WP		A	SS403887			

6906485



				TOLERANCES UNLESS SPECIFIED			DRAWN KK 12/16/16					
				DEC.	INCHES		CHK					
				.X	±.1		APPD KK 12/16/16					
				.XX	±.03		SCALE 1=1					
				.XXX	±.005		REF					
				.XXXX	±.0005	MAT'L.						
NO.	REVISION	BY & DATE	CHK	ANG	±7'30"	FINISH			PREV			
THIS DRAWING IN DESIGN AND DETAIL IS OUR PROPERTY AND MUST NOT BE USED EXCEPT IN CONNECTION WITH OUR WORK. ALL RIGHTS OF DESIGN AND INVENTION ARE RESERVED. THIS IS AN ELECTRONICALLY GENERATED DOCUMENT – DO NOT SCALE THIS PRINT			RFP			CAD FILE 6906485			SIZE A	DRAWING NO. PAGE OF		REV.
			DIST WP							6906485		

CERTIFICATION DATA SHEET

Model#: 48A11011066 B **WINDING#:** PE4861767 NONE 1
CONN. DIAGRAM: 6906485 **ASSEMBLY:** F1 ONLY
OUTLINE: A-SS403887-450

TYPICAL MOTOR PERFORMANCE DATA

HP	KW	SYNC. RPM	F.L. RPM	FRAME	ENCLOSURE	KVA CODE	DESIGN
1/2	.37	1200	1075	48Y	OPAO	A	NO DESIGN CODE

PH	Hz	VOLTS	FL AMPS	START TYPE	DUTY	INSL	S.F	AMB°C	ELEVATION
1	60	115	6.1	ACROSS THE LINE	CONTINUOUS	B3	1.0	40	3300

FULL LOAD EFF: 64	3/4 LOAD EFF: 62.7	1/2 LOAD EFF: 54.8	GTD. EFF	ELEC. TYPE	NO LOAD AMPS
FULL LOAD PF: 90.9	3/4 LOAD PF: 87.7	1/2 LOAD PF: 80.8	0	PSC 4 SPEED	3

F.L. TORQUE	LOCKED ROTOR AMPS	L.R. TORQUE	B.D. TORQUE	F.L. RISE°C
38.3 LB-FT	13.3	12 LB-FT -	51.7 LB-FT -	0

SOUND PRESSURE @ 3 FT.	SOUND POWER	ROTOR WK^2	MAX. WK^2	SAFE STALL TIME	STARTS /HOUR	APPROX. MOTOR WGT
- dBA	- dBA	- LB-FT^2	- LB-FT^2	10 SEC.	-	- LBS.

*** SUPPLEMENTAL INFORMATION ***

DE BRACKET TYPE	ODE BRACKET TYPE	MOUNT TYPE	ORIENTATION	SEVERE DUTY	HAZARDOUS LOCATION	DRIP COVER	SCREENS	PAINT
STANDARD	STANDARD	RESILIENT RING-EXTENDED STUDS	HORIZONTAL	FALSE	NONE	FALSE	NONE	GRAY (POWDER)

BEARINGS		GREASE	SHAFT TYPE	SPECIAL DE	SPECIAL ODE	SHAFT MATERIAL	FRAME MATERIAL
DE	OPE						
BALL	BALL	BEACON 325	SGL SPL EXT	0.500 x 5.00 IN SEF WITH 4.50 IN DOUBLE FULL FLAT	NONE	1144 STRESSPROOF (C-223)	ROLLED STEEL
6203	6203						

THERMO-PROTECTORS				THERMISTORS	CONTROL	SPACE /n HEATERS
THERMOSTATS	PROTECTORS	WDG RTDs	BRG RTDs			
NONE	AUT LCK RTR ONLY	NONE	NONE	NONE	FALSE	NONE VOLTS

If Inverter equals NONE, contact factory for further information

INVERTER TORQUE: NONE
INV. HP SPEED RANGE: NONE
ENCODER: NONE
NONE NONE
NONE NONE PPR
BRAKE: NONE NONE
NONE P/N NONE
NONE NONE
NONE FT-LB NONE V NONE Hz

*
N
O
T
E
S
*

DATE: 06/27/2017 03:33:36 AM

FORM 3531 REV.3 02/07/99
** Subject to change without notice.