

# PRODUCT INFORMATION PACKET



Model No: M6K34DK263

Catalog No: E114214.00

..1 1/2HP..3450RPM.56.DP.115/230V.1PH.60HZ.CONT.40C.1.15SF.RIGID C.....GENERAL  
PURPOSE.MANUAL.....

Open Drip Proof (ODP)



Regal and Leeson are trademarks of Regal Beloit Corporation or one of its affiliated companies.

©2018 Regal Beloit Corporation, All Rights Reserved. MC017097E





## Nameplate Specifications

Output HP	1.50 Hp	Output KW	1.1 kW
Frequency	60 Hz	Voltage	115/230 V
Current	12.2/6.1 A	Speed	3450 rpm
Service Factor	1.15	Phase	1
Efficiency	81.5 %	Duty	Continuous
Insulation Class	B	Design Code	L
KVA Code	J	Frame	56C
Enclosure	Drip Proof	Overload Protector	Manual
Ambient Temperature	40 °C	Drive End Bearing Size	6203
Opp Drive End Bearing Size	6203	UL	Recognized
CSA	Y	CE	N
IP Code	22		

## Technical Specifications

Electrical Type	Capacitor Start Capacitor Run	Starting Method	Across The Line
Poles	2	Rotation	Selective Counterclockwise
Mounting	Rigid base	Motor Orientation	HORIZONTAL
Drive End Bearing	BALL	Opp Drive End Bearing	BALL
Frame Material	Rolled Steel	Shaft Type	NEMA 56
Overall Length	12.37 in	Frame Length	7.50 in
Shaft Diameter	0.625 in	Shaft Extension	1.88 in
Assembly/Box Mounting	F1 ONLY		
Outline Drawing	607-0375-750C	Connection Diagram	005053.01

4

3

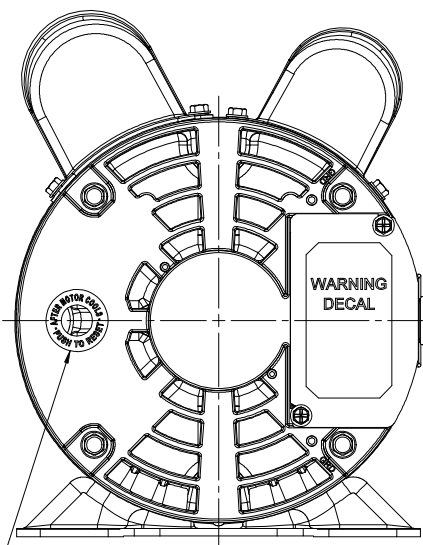
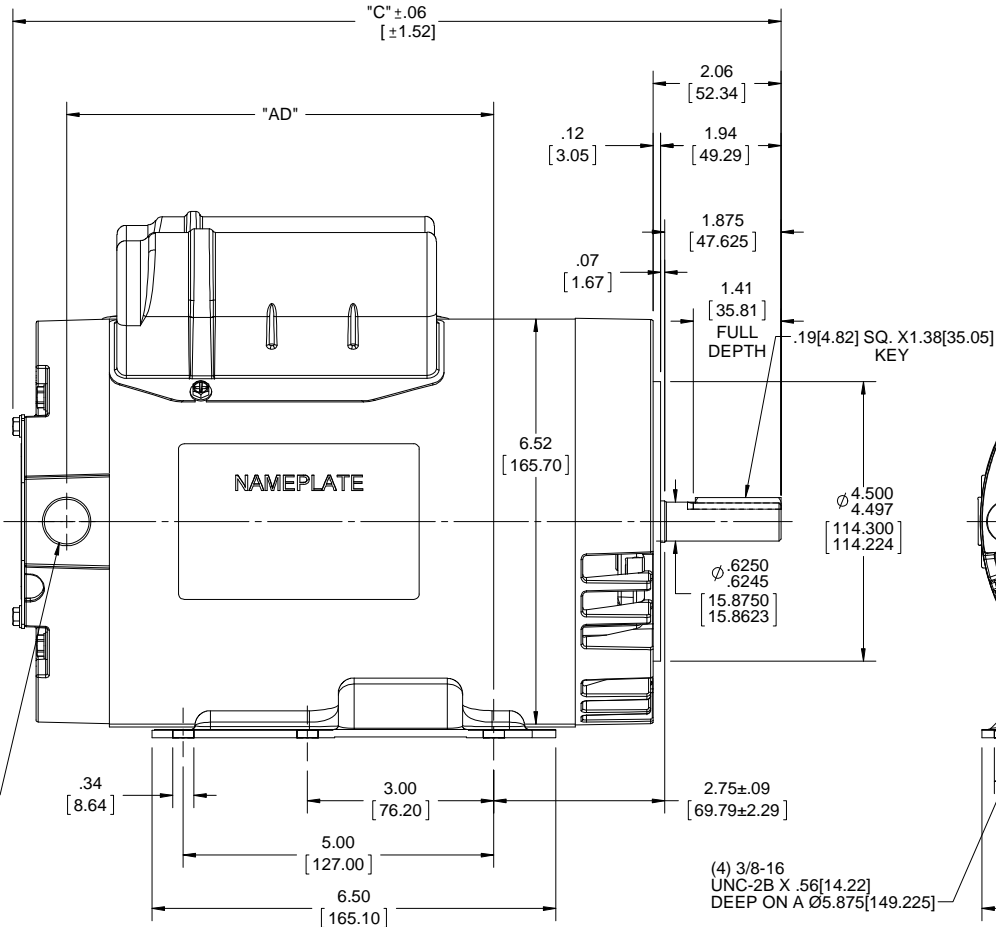
Uncontrolled Copy

2

1

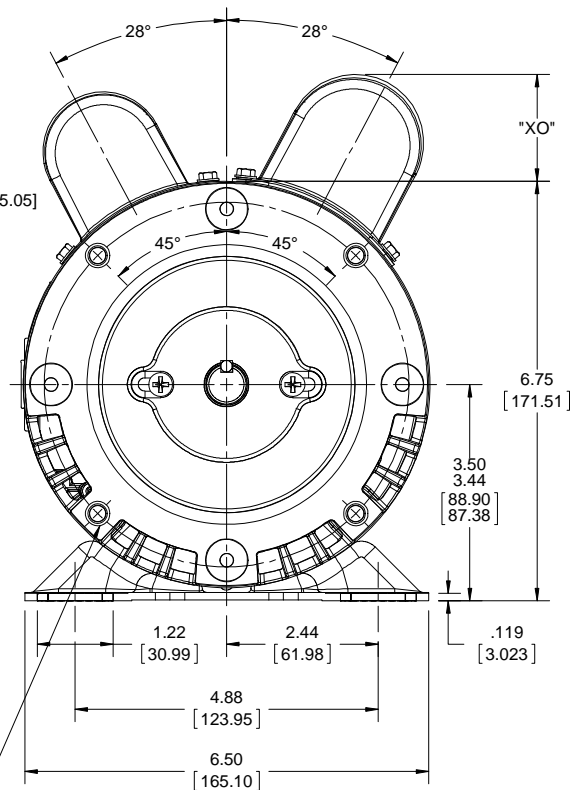
B

B

DECAL MANUAL  
PROTECTOR(1) 1/2-14 NPT  
(PLUGGED)

NAMEPLATE

 $\phi 4.500$   
 $4.497$   
 $114.300$   
 $114.224$ 
 $\phi 6.250$   
 $6.245$   
 $15.8750$   
 $15.8623$ 

 (4) 3/8-16  
 UNC-2B X .56[14.22]  
 DEEP ON A Ø5.875[149.225]


"XO"

 MAXIMUM FACE RUNOUT TO BE .004 T.I.R.  
 MAXIMUM PILOT ECCENTRICITY .004 T.I.R.  
 PERMISSIBLE SHAFT RUNOUT .002 T.I.R.

A

A

DASH NO.	"C"	"AD"	CAP DASH	"XO"
750	12.37[314.19]	6.88[174.75]	A	1.15[39.37]
			B	1.44[36.57]
			C	1.72[43.68]

4

3

2

1

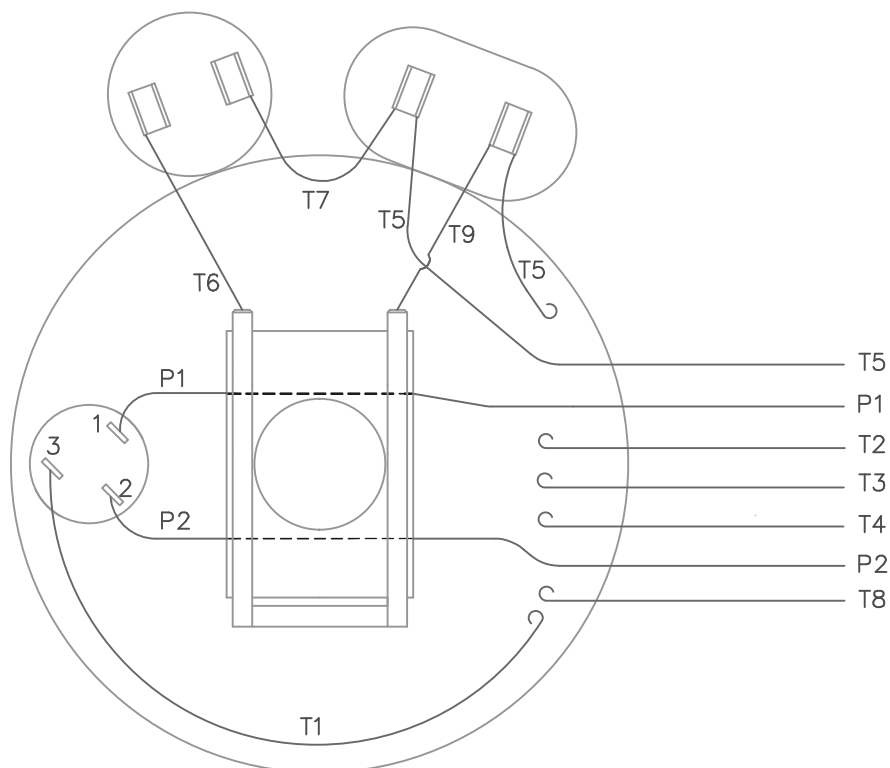
DRAWING REVISION	REVISION BY	DATE
ECO-0148826	APPROVED BY	DATE
ECO DESCRIPTION		
OUTLINE CONVERSION PROJECT		
COPYRIGHT REGAL BELOIT AMERICA, INC. ALL RIGHTS RESERVED. PROPRIETARY AND CONFIDENTIAL INFORMATION - THIS DOCUMENT IS THE PROPERTY OF REGAL BELOIT AMERICA, INC. (OWNER) AND CONTAINS OWNER'S PROPRIETARY INFORMATION. ANY PERSON, CORPORATION OR OTHER FIRM RECEIVING IT IS DEEMED, BY RECEIVING IT, TO AGREE THAT IT, AND/OR ANY PART OF IT, SHALL NOT BE DISCLOSED TO ANY PERSON, CORPORATION OR OTHER ENTITY, DUPLICATED, AND/OR USED, EXCEPT AS EXPRESSLY APPROVED IN WRITING IN ADVANCE BY OWNER. THIS DOCUMENT SHALL BE RETURNED TO OWNER UPON REQUEST. IT MAY BE SUBJECT TO CERTAIN RESTRICTIONS UNDER APPLICABLE EXPORT CONTROL LAWS AND REGULATIONS.		

TOLERANCES UNLESS OTHERWISE SPECIFIED:	DEC.	INCH	mm	ANGLE
.X	±0.1		±2.5	±0.5°
.XX	±0.03		±0.76	
.XXX	±0.005		±0.127	
.XXXX	±0.0005		±0.0127	
REMOVE BURRS & BREAK SHARP EDGES: .003/.015 [0.076/.381] X 45° CORNER FILLETS: R.02 [0.51]				
MACHINED SURFACES: 125 INCH 3.2 mm SHOWN IN [BRACKETS]				

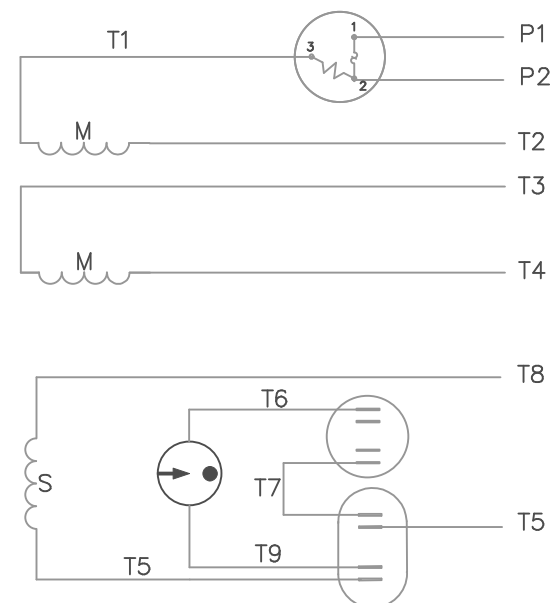
DRAWN BY	DATE
A. KEETHA	08/29/2016
APPROVED BY	DATE
PK	07/16/2018
REFERENCE	THIRD ANGLE PROJECTION
607-0265	

DESCRIPTION	MATERIAL	PROCESS/FINISH
OUTLINE 56H FRAME DRIP PROOF C-FACE		
SIZE	DRAWING NUMBER	SHEET
B	607-0375	1 OF 1

VIEW FROM OUTSIDE OF MOTOR AT SWITCH END.



## LINE LEADS



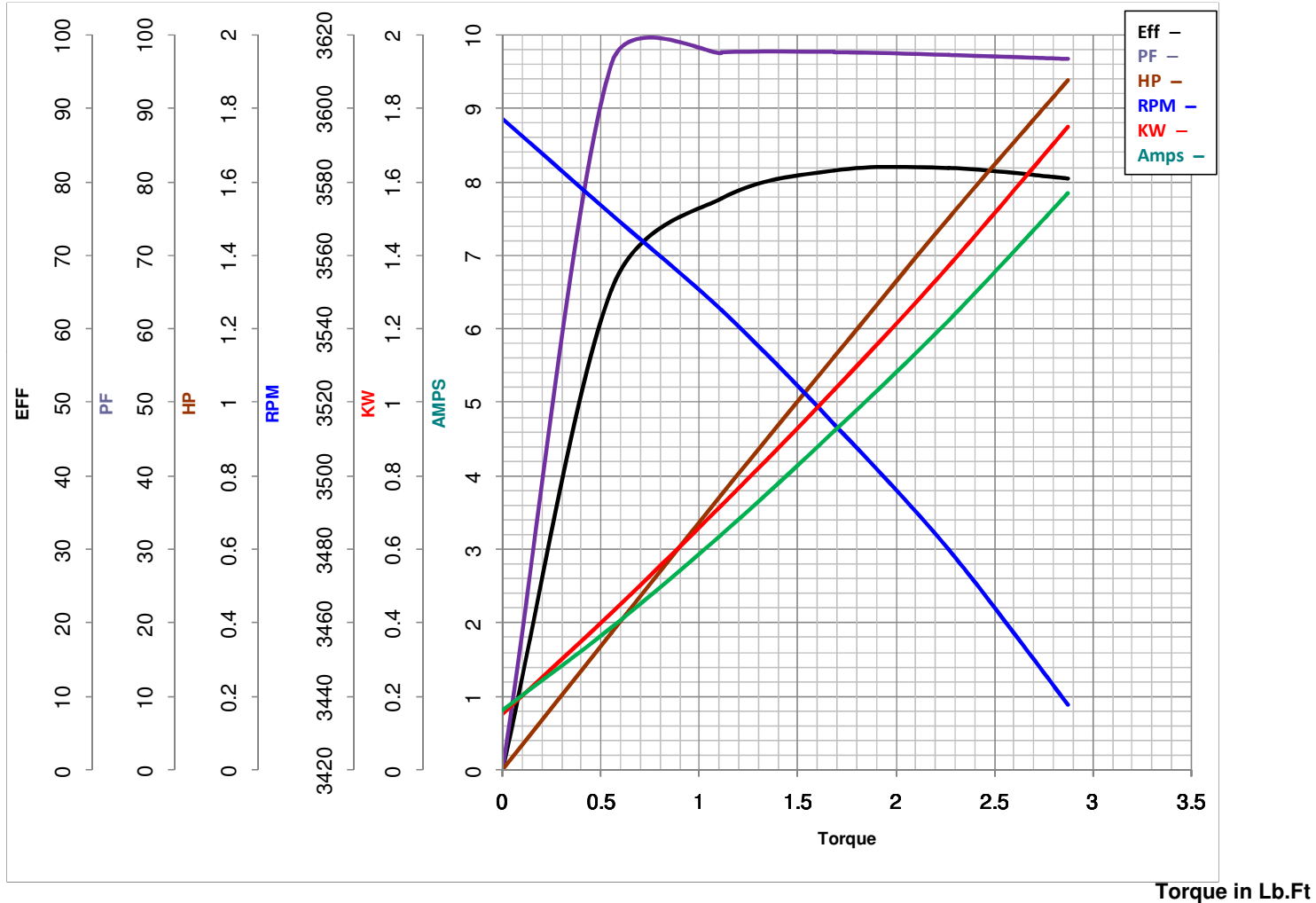
	ROTATION FACING LEAD END	L1	L2	JOIN	INSULATE SEPARATELY
HIGH VOLT	C.C.W.	P1	T4 T5	T2,T3 T8	P2
	C.W.	P1	T4 T8	T2,T3 T5	P2
LOW VOLT	C.C.W.	P1	T2,T4 T5	P2,T3 T8	---
	C.W.	P1	T2,T4 T8	P2,T3 T5	---

				TOLERANCES UNLESS OTHERWISE SPECIFIED		<b>LEESON</b> ELECTRIC CORPORATION			
				DECIMALS					
				.00	± .01	DRAWN JRW 09/26/74	TITLE		
				.000	± .005	CH'K'D.	EXTERNAL WIRING DIAGRAM		
				.0000	± .0005	APPR. TEM	TYPE "K" W/PROTECTOR		
18	REDRAWN ON CAD	DBT	05/27/97	FRACTIONS	± 1/64	SCALE 1=1	MAT'L. DECAL 004011		
NO.	REVISION	BY	DATE	ANGLES	± 1/2°	REF. 005004	BRF		
				INCH/MM		FMF W-K 6341	FINISH	SIZE A	DRAWING NO. 005053-01
				THIS DRAWING IN DESIGN AND DETAIL IS OUR PROPERTY AND MUST NOT BE USED EXCEPT IN CONNECTION WITH OUR WORK ALL RIGHTS OF DESIGN AND INVENTION ARE RESERVED					



# LEESON ELECTRIC CORPORATION

## TYPICAL PERFORMANCE CURVE for AC MOTOR

Model No E114214.00Curve at 230  
60  
1.5Volts  
HZ  
HPHP 1.50PHASE 1VOLTS 115/230Catalog No E114214.00HZ 60RPM 3450

FL TORQUE 2.266 Lb.Ft  
 BD TORQUE 5.2 Lb.Ft  
 LR TORQUE 6.657 Lb.Ft

FL AMPS 12.2/6.1  
 PU TORQUE 5.1 Lb.Ft  
 LR AMPS 43.48

WINDING K632185-3

Date 3/27/2018