

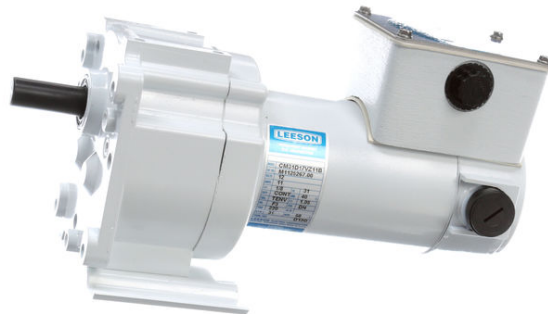
PRODUCT INFORMATION PACKET



Model No: CM31D17VZ11B

Catalog No: M1125267.00

P300.PARALLEL..58:1.31RPM.220LBIN.1/8HP.31..TRIPLE.WASHGUARD.12V.DC.TENV.CM31D17VZ11B
P300 Series



Regal and Leeson are trademarks of Regal Beloit Corporation or one of its affiliated companies.

©2018 Regal Beloit Corporation, All Rights Reserved. MC017097E





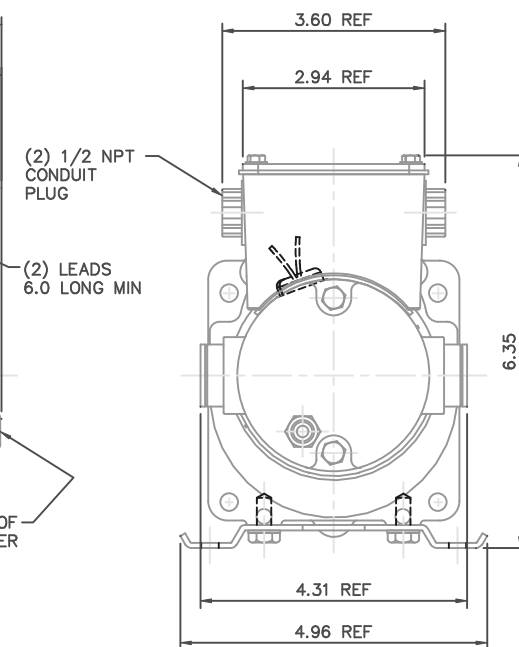
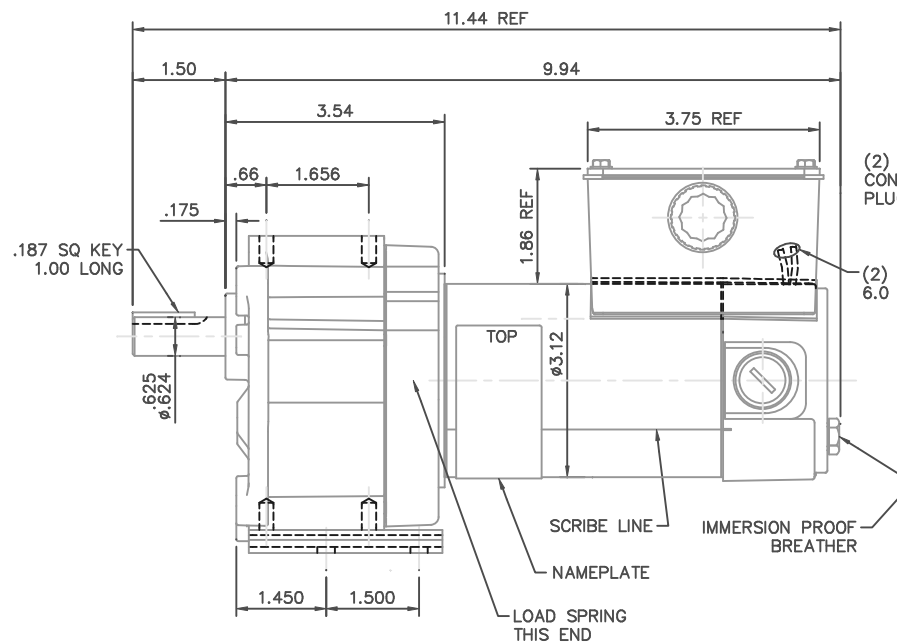
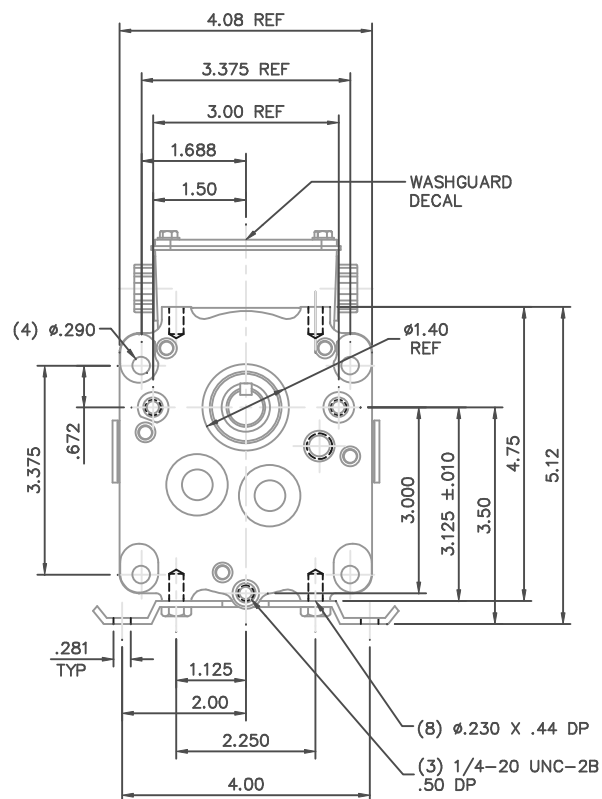
Nameplate Specifications

| | | | |
|----------------------------|---------------------------------|------------------------|------------|
| Output HP | 0.13 Hp | Output KW | 0.10 kW |
| Voltage | 12 V | Current | 11.0 A |
| Speed | 31 rpm | Service Factor | 1 |
| Efficiency | 51 % | Duty | Continuous |
| Insulation Class | F | Frame | 31 |
| Enclosure | Totally Enclosed Non Ventilated | Overload Protector | No |
| Ambient Temperature | 40 °C | Drive End Bearing Size | 6201 |
| Opp Drive End Bearing Size | 6201 | UL | Recognized |
| CSA | Y | CE | N |

Technical Specifications

| | | | |
|-----------------|-------------------|--------------------|------------|
| Rotation | Reversible | Mounting | Special |
| Shaft Type | Parallel | Overall Length | 11.44 in |
| Frame Length | 4.44 in | Shaft Diameter | 0.625 in |
| Shaft Extension | 1.63 in | | |
| Outline Drawing | M1030988-M1125267 | Connection Diagram | M100530901 |


This is an uncontrolled document once printed or downloaded and is subject to change without notice. Date Created: 10/15/2018



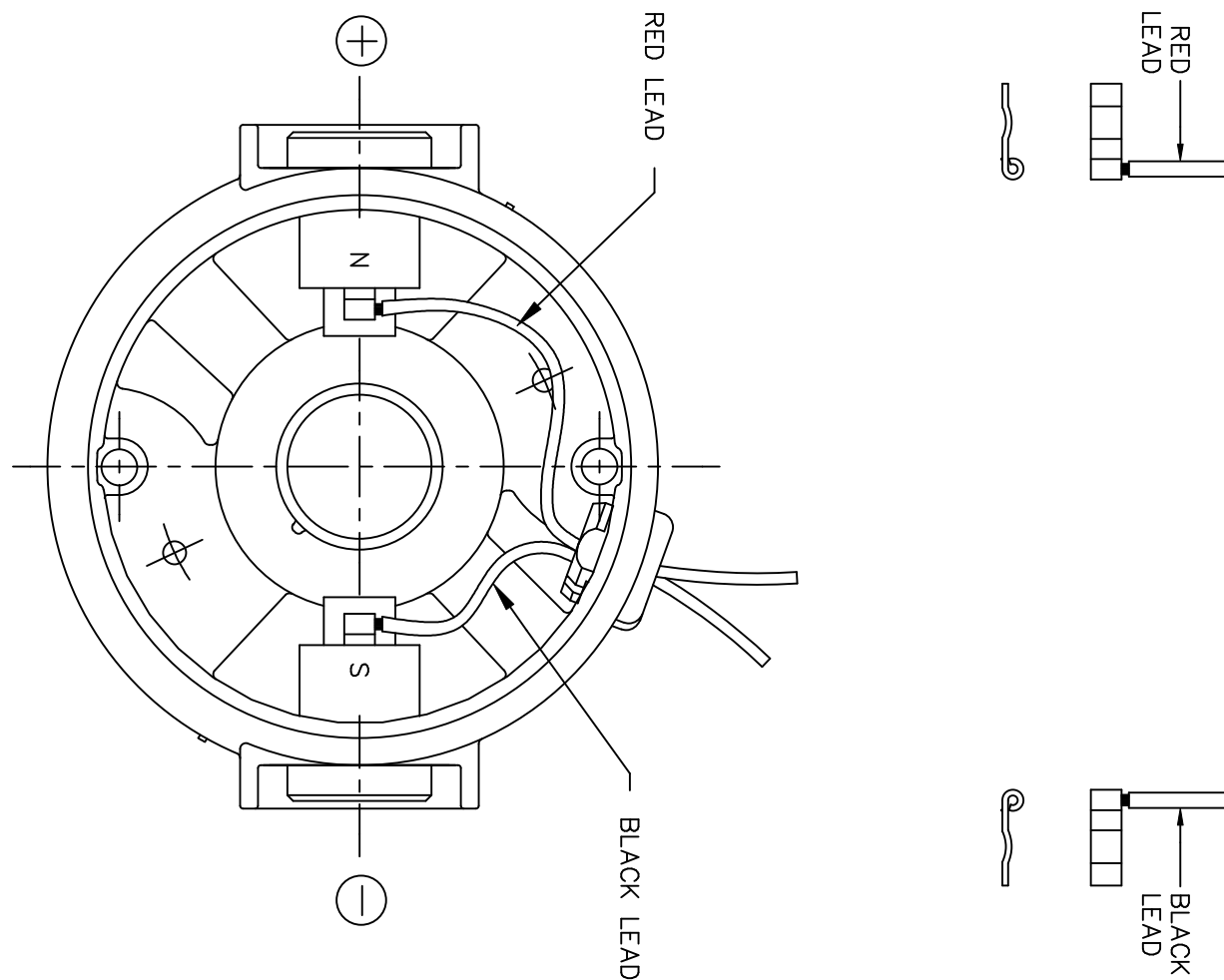
NOTES:

- 1) GASKETS BETWEEN FRAME AND ENDBELL/GEARBOX, CONDUIT BOX AND FRAME, AND CONDUIT BOX COVER AND CONDUIT BOX.
- 2) NAMEPLATE MUST BE LOCATED .10 BELOW CONDUIT BOX EDGE.


| CATALOG NUMBER | OUTPUT RPM | FULL LOAD TORQUE LB.-IN. | INPUT HP | OVERHUNG LOAD LBS. | RATIO TO 1 |
|----------------|------------|--------------------------|----------|--------------------|------------|
| M1125267.00 | 31 | 220 | 1/8 | 327 | 58 |

| | | | | | | | | | | | | |
|--|---|-----------|----------|-----|--------------------------------|--------|---|---|----------|-------------|-------------|---------|
| | | | | | TOLERANCES UNLESS SPECIFIED | |  | ELECTRIC MOTORS GEARMOTORS AND DRIVES | | DRAWN | IPG 5/12/05 | |
| | | | | | DEC. INCHES | | | | | CHK | SAD 5/12/05 | |
| 02 | 1/2 NPT CONDUIT PLUG QTY. WAS 3. ISAAC 08-3457 | RPB | 7/29/08 | BC | .X | ±.1 | | | | APPD | | |
| 01 | REMOVED (2) O-RINGS FROM INSIDE OF BRUSH HOLDERS, CHANGED BRUSH CAPS & ADDED TEFLON. ECN 07-4100 | RPB | 11/21/07 | BC | .XXX | ±.005 | | | | SCALE | 1=2 | |
| 00 | RELEASED: REF. M1030987.00 | IPG | 5/12/05 | SAD | .XXXX | ±.0005 | MATL. | | REF | M1030987.00 | | |
| NO. | REVISION | BY & DATE | | CHK | ANG | ±1/2" | FINISH | | FMF | M1125267.00 | | |
| THIS DRAWING IN DESIGN AND DETAIL IS OUR PROPERTY AND MUST NOT BE USED EXCEPT IN CONNECTION WITH OUR WORK. ALL RIGHTS OF DESIGN AND INVENTION ARE RESERVED. THIS IS AN ELECTRONICALLY GENERATED DOCUMENT - DO NOT SCALE THIS PRINT | | | | | | | RFP | CAD FILE | M1030988 | SIZE | DRAWING NO. | |
| | | | | | | | DIST | | | B | M1030988.00 | |
| | | | | | | | | | | | | REV. 02 |

D.C. MOTORS



EXTERNAL CONNECTIONS FOR CW ROTATION
VIEWING LEAD END OF MOTOR WITH RED LEAD
POSITIVE (+) AND BLACK LEAD NEGATIVE (-)
FOR CCW ROTATION REVERSE POLARITY

| | | | | | | | | | | | | |
|--|----------------------------|------------|-----|--------------------------------|--------|---|--|-----------|----------------------------|--|-----------------|--|
| | | | | TOLERANCES UNLESS SPECIFIED | |  ELECTRIC MOTORS GEARMOTORS AND DRIVES | | | DRAWN IPG 5/2/05 | | | |
| | | | | DEC. | INCHES | | | | CHK SAD 5/2/05 | | | |
| | | | | .X | ±.1 | | | | APPD | | | |
| | | | | .XX | ±.01 | | | | TITLE CONNECTION DIAGRAM | | SCALE 1=1 | |
| | | | | .XXX | ±.005 | | | | | | REF M1005308.01 | |
| 00 | RELEASED: REF. M1005308.01 | IPG 5/2/05 | SAD | .XXXX | ±.0005 | MAT'L. | | | FMF M1125275.00 | | | |
| NO. | REVISION | BY & DATE | CHK | ANG | ±1/2" | FINISH | | | PREV | | | |
| THIS DRAWING IN DESIGN AND DETAIL IS OUR PROPERTY AND MUST NOT BE USED EXCEPT IN CONNECTION WITH OUR WORK ALL RIGHTS OF DESIGN AND INVENTION ARE RESERVED THIS IS AN ELECTRONICALLY GENERATED DOCUMENT – DO NOT SCALE THIS PRINT | | | | RFP | | CAD FILE M100530901 | | SIZE A | DRAWING NO. M1005309.01 | | REV. 00 | |
| | | | | DIST | | | | | | | | |