

# PRODUCT INFORMATION PACKET



Model No: CM31P17NZ1C  
Catalog No: M1125050.00  
PZ...900:1.1.9RPM.100LBIN..007HP.31...AC GEARMOTORS SUB-  
FHP./115V.1PH.60HZ.TENV.CM31P17NZ1C  
PZ Series



Regal and Leeson are trademarks of Regal Beloit Corporation or one of its affiliated companies.  
©2018 Regal Beloit Corporation, All Rights Reserved. MC017097E





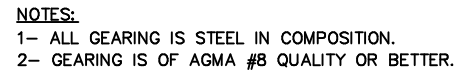
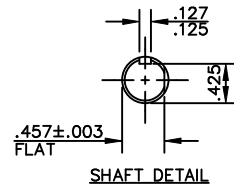
### Nameplate Specifications


|                            |                                 |                        |            |
|----------------------------|---------------------------------|------------------------|------------|
| Output HP                  | 0.01 Hp                         | Output KW              | 0.03 kW    |
| Frequency                  | 60 Hz                           | Voltage                | 115 V      |
| Current                    | 0.40 A                          | Speed                  | 2 rpm      |
| Service Factor             | 1                               | Phase                  | 1          |
| Duty                       | Continuous                      | Insulation Class       | F          |
| KVA Code                   | L                               | Frame                  | 31         |
| Enclosure                  | Totally Enclosed Non Ventilated | Overload Protector     | No         |
| Ambient Temperature        | 40 °C                           | Drive End Bearing Size | 6000       |
| Opp Drive End Bearing Size | R6                              | UL                     | Recognized |
| CSA                        | Y                               | CE                     | N          |

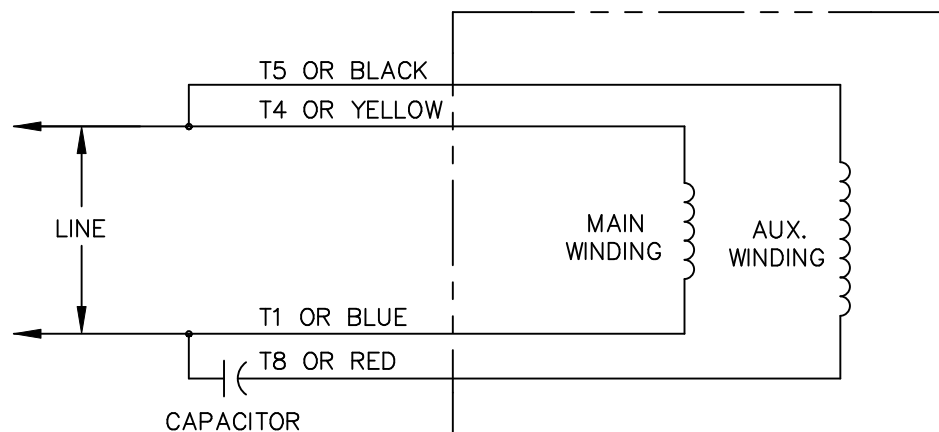
### Technical Specifications

|                 |                   |                    |             |
|-----------------|-------------------|--------------------|-------------|
| Rotation        | Reversible        | Mounting           | Special     |
| Shaft Type      | Parallel          | Overall Length     | 8.71 in     |
| Frame Length    | 3.87 in           | Shaft Diameter     | 0.500 in    |
| Shaft Extension | 1 in              |                    |             |
| Outline Drawing | M1030348-M1125080 | Connection Diagram | M1005089.01 |

This is an uncontrolled document once printed or downloaded and is subject to change without notice. Date Created: 10/15/2018



|   |  |              |                                |                   |   |   |                      |         |
|---|--|--------------|--------------------------------|-------------------|---|---|----------------------|---------|
| 06  | ROTATED SHAFT FLAT 180', PER ECR 79989         | RLW 7/24/02  | TOLERANCES<br>UNLESS SPECIFIED |                   |  | ELECTRIC MOTORS<br>GEARMOTORS<br>AND DRIVES | DRAWN DWF 08/27/93   |         |
| 05  | M1125050, M1125051 & M1125052 "X" DIM WAS 2.98 | BPW 12/03/01 | DEC.                           | INCHES            |   |   | CHK                  |         |
| 04  | M1125050.00 "XL" DIM WAS 8.46                  | TMZ 06/22/95 | .X                             | ±.1               |   |   | APPD SPV 09/03/93    |         |
|   | "XH" DIM WAS 6.90                              |              | .XX                            | ±.03              | TITLE<br>OUTLINE DRAWING<br>31 FRAME A.C.   | SCALE 3=4                                   |                      |         |
| 03  | ADDED TORQUE'S AND RPM                         | SPV 05/16/95 | DWF                            | .XXX              |   | ±.005                                       | REF PR930265         |         |
| 02  | ADDED NEW CON BOX, OPTIONAL BASE               | SPV 04/25/95 |                                | .XXXX             |   | ±.0005                                      | FMF M1125051.00      |         |
| NO.   | REVISION                                       | BY & DATE    | CHK                            | ANG               | ±1/2"   | FINISH                                      | PREV                 |         |
| THIS DRAWING IN DESIGN AND DETAIL IS OUR PROPERTY AND MUST NOT BE USED EXCEPT IN CONNECTION WITH OUR WORK. ALL RIGHTS OF DESIGN AND INVENTION ARE RESERVED. |  |              | RFP                            | CAD FILE M1030348 |   | SIZE B                                      | DRAWING NO. M1030348 | REV. 06 |
| THIS IS AN ELECTRONICALLY GENERATED DOCUMENT - DO NOT SCALE THIS PRINT  |  |              | DIST                           |                   |   |   |                      |         |



CONNECTIONS SHOWN FOR CCW ROTATION FACING LEAD END.  
TO REVERSE ROTATION INTERCHANGE T4(YELLOW) AND T1(BLUE) LEADS

|  |  |     |          |                                       |         |                             |   |      |             |
|--|--|-----|----------|---------------------------------------|---------|-----------------------------|---|------|-------------|
|  |  |     |          | TOLERANCES UNLESS OTHERWISE SPECIFIED |         | LEESON ELECTRIC CORPORATION |   |      |             |
|  |  |     |          |                                       |         |                             |   |      |             |
|  |  |     |          | DECIMALS                              |         |                             |   |      |             |
|  |  |     |          | .00                                   | ± .01   | DRAWN SJB 12/21/89          | TITLE                                     |      |             |
| 02   | ADDED T1 AND T4 TO REVERSE INSTUCTIONS | DWD | 4/7/97   | .000                                  | ± .005  | CH'K'D.                     | EXTERNAL WIRING DIAGRAM                   |      |             |
| 01   | REDRAWN ON CAD RJB                     | PTZ | 11/16/92 | .0000                                 | ± .0005 | APPR.                       | MAT'L. "P" TYPE W/O PROTECTOR             |      |             |
| NO.  | REVISION                               | BY  | DATE     | FRACTIONS                             | ± 1/64  | SCALE 1=1                   | DUAL ROT., ROT. BASED ON ODD # GEAR STAGE |      |             |
| THIS DRAWING IN DESIGN AND DETAIL IS OUR PROPERTY AND MUST NOT BE USED EXCEPT IN CONNECTION WITH OUR WORK<br>ALL RIGHTS OF DESIGN AND INVENTION ARE RESERVED |  |     |          | ANGLES                                | ± 1/2°  | REF.                        | FINISH                                    | SIZE | DRAWING NO. |
|  |  |     |          | INCH/MM                               |         | FMF                         |   | A    | M1005089.01 |