

PRODUCT INFORMATION PACKET



Model No: C6C28FC3 J

Catalog No: 113912.00

1/2HP..37kW.2850RPM.56.IP54.110/220V.1PH.50HZ.CONT.NOT.40C.1SF.C FACE.50 HERTZ.C6C28FC3J
50 Hz



Regal and Leeson are trademarks of Regal Beloit Corporation or one of its affiliated companies.

©2018 Regal Beloit Corporation, All Rights Reserved. MC017097E



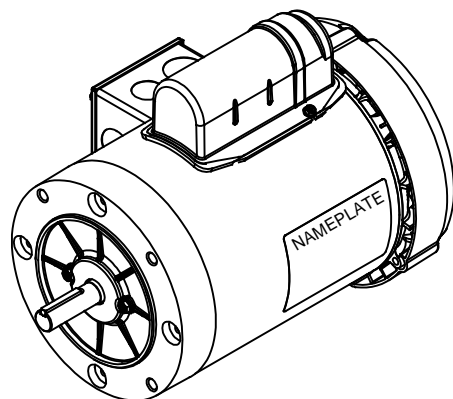
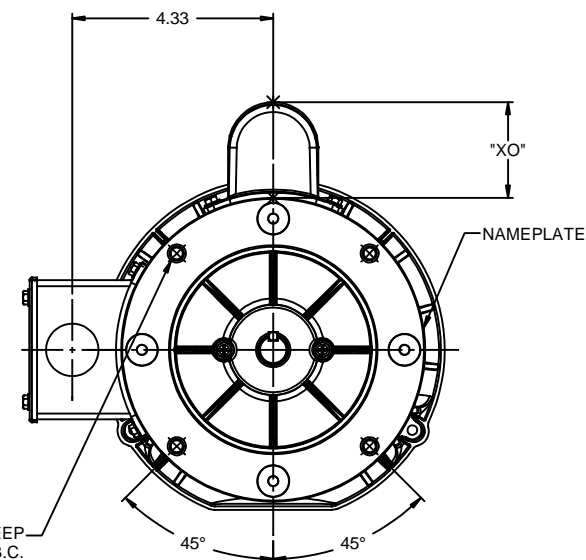
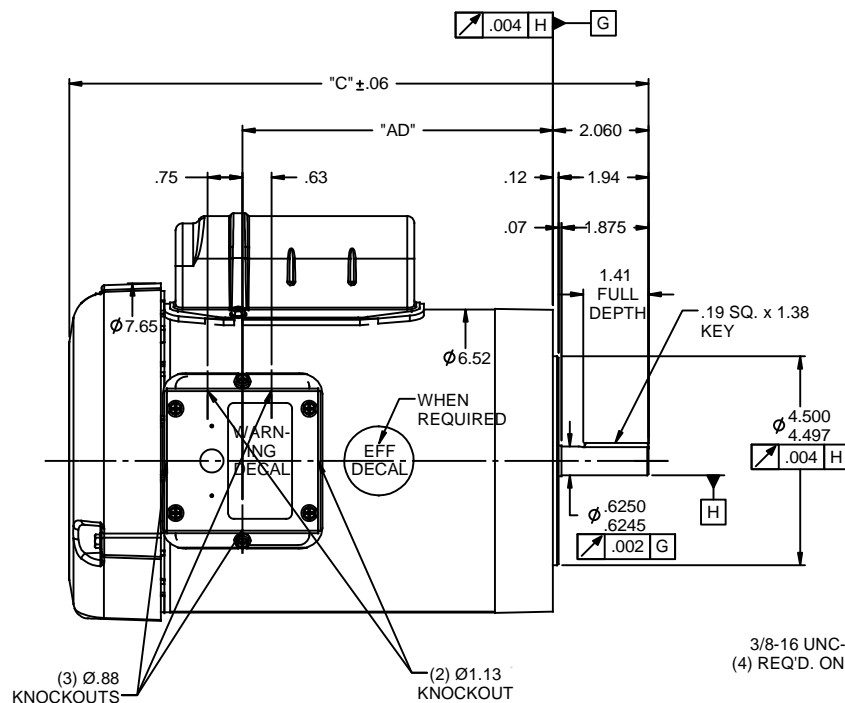
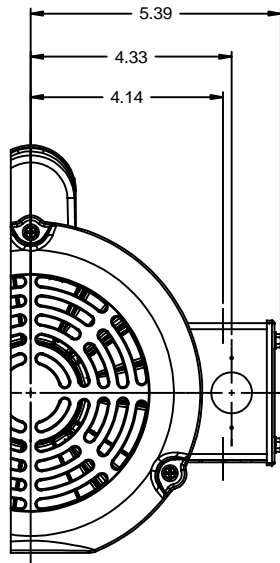


Nameplate Specifications

| | | | |
|----------------------------|------------------------------------|------------------------|-------------------|
| Output HP | 0.50 Hp | Output KW | 0.37 kW |
| Frequency | 50 Hz | Voltage | 110/220 V |
| Current | 7.6/3.8 A | Speed | 2850 rpm |
| Service Factor | 1 | Phase | 1 |
| Efficiency | 70 % | Duty | Continuous |
| Insulation Class | B | Design Code | N |
| KVA Code | K | Frame | 56C |
| Enclosure | Totally Enclosed Fan Cooled | Overload Protector | No |
| Ambient Temperature | 40 °C | Drive End Bearing Size | 6203 |
| Opp Drive End Bearing Size | 6203 | UL | Recognized |
| CSA | Y | CE | Y |
| IP Code | 54 | | |



Technical Specifications

| | | | |
|-----------------------|--------------------------------------|-----------------------|-----------------------------------|
| Electrical Type | Capacitor Start Induction Run | Starting Method | Across The Line |
| Poles | 2 | Rotation | Selective Counterclockwise |
| Mounting | Round | Motor Orientation | HORIZONTAL |
| Drive End Bearing | BALL | Opp Drive End Bearing | BALL |
| Frame Material | Rolled Steel | Shaft Type | NEMA 56 |
| Overall Length | 11.48 in | Frame Length | 6.00 in |
| Shaft Diameter | 0.625 in | Shaft Extension | 1.88 in |
| Assembly/Box Mounting | F1 ONLY | | |
| Outline Drawing | 028854-600A | Connection Diagram | 005390.01 |

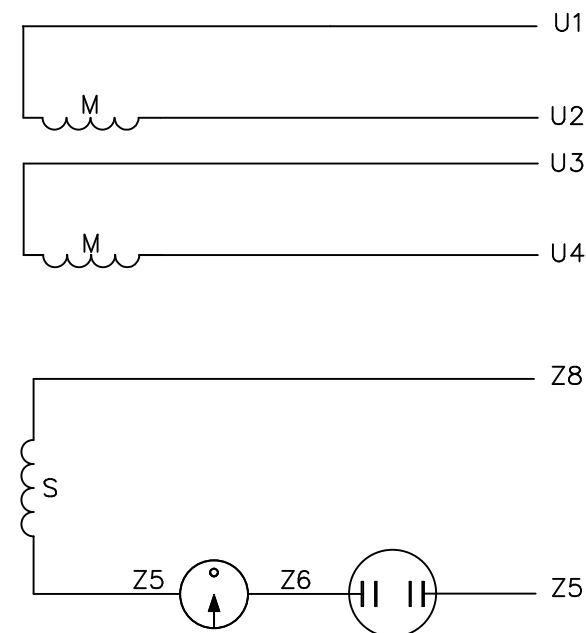
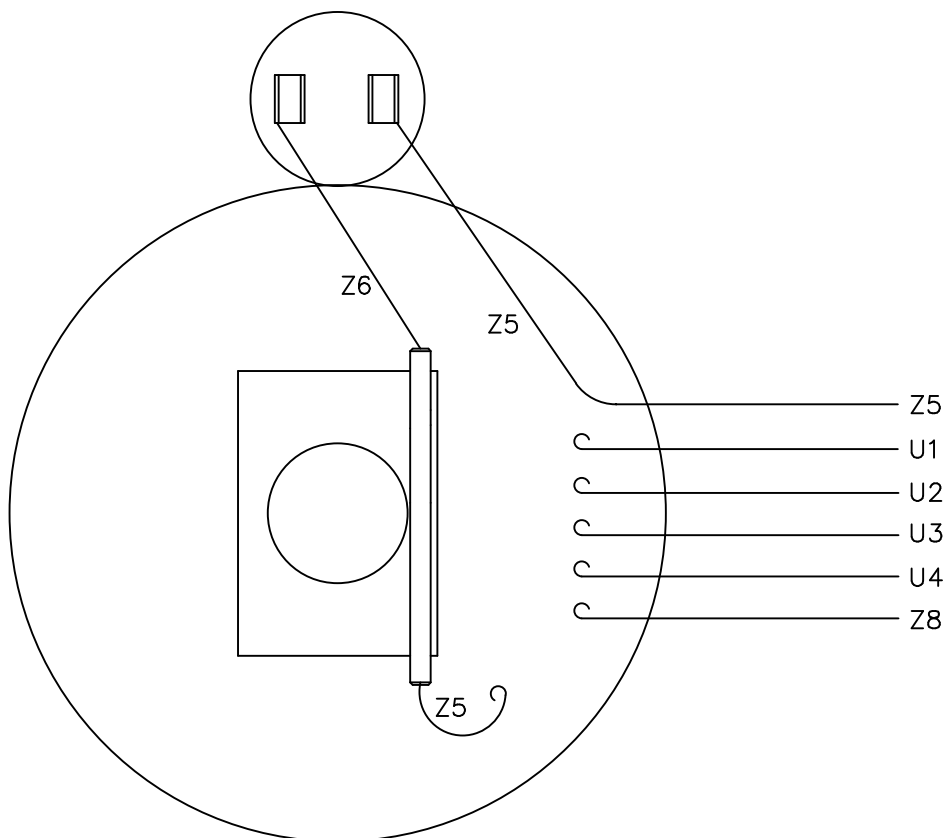


| DASH NO. | "C" | "AD" | CAP DASH | XO |
|----------|-------|------|----------|-----|
| 500 | 10.48 | 4.69 | | |
| 550 | 10.98 | 5.19 | A | 1.6 |
| 600 | 11.48 | 5.69 | B | 2.0 |
| 650 | 11.98 | 6.19 | C | 2.3 |
| 700 | 12.48 | 6.69 | | |
| 750 | 12.98 | 7.19 | | |
| 800 | 13.48 | 7.69 | | |
| 850 | 13.98 | 8.19 | | |


NOTES:
1) GASKETS THROUGHOUT

| | | | | | | | | | |
|---------------------------|--|---------------|---|------|--------------------------------|---|---|-------|----------------|
| | | | | | TOLERANCES UNLESS SPECIFIED |  | ELECTRIC MOTORS GEARMOTORS AND DRIVES | DRAWN | GRB 07/17/2008 |
| | | | | DEC | INCHES | | | CHK | DJ 07/17/2008 |
| | | | | X | ±.1 | | | APPR | |
| | | | | XX | ±.03 | TITLE | OUTLINE - 56C FRAME | SCALE | 3:8 |
| 02 | ADDED ISOMETRIC VIEW AS PER ISAAC #08-4017 | GRB 9/5/2008 | DJ | XXX | ±.005 | | TEFC - "C" FACE | REF | 028852 |
| 01 | ADDED "XO" DIMENSION | SRS 8/28/2008 | | XXXX | ±.0005 | MATL | | FMF | 110419.00 |
| NO | REVISION | BY & DATE | CHK | ANG | ±1/2" | FINISH | | PAGE | OF |
| THIRD ANGLE PROJECTION | | |  | | RFP | 07/17/2008 | PREV | SIZE | DRAWING NO |
| | | | | | NETWORK FILE NAME: | | 028854 | B | 028854 |
| | | | | | | | | | REV |

VIEW FROM OUTSIDE OF MOTOR AT SWITCH END.



| | ROTATION FACING LEAD END | L1 | L2 | JOIN |
|--------------|--------------------------------|-------------|-------------|-------------|
| HIGH VOLT | C.C.W. | U1 | U4 Z5 | U2,U3 Z8 |
| | C.W. | U1 | U4 Z8 | U2,U3 Z5 |
| LOW VOLT | C.C.W. | U1,U3 Z8 | U2,U4 Z5 | --- |
| | C.W. | U1,U3 Z5 | U2,U4 Z8 | --- |

| | | | | | | | | | | | |
|--|----------|--|-----------|--------------------------------|--------|---|--------|--------------------|----------------|--------------------------|-----|
| | | | | TOLERANCES UNLESS SPECIFIED | |  ELECTRIC MOTORS GEARMOTORS AND DRIVES | | DRAWN RSK 09/09/96 | | | |
| | | | | DEC. | INCHES | | | CHK | | | |
| | | | | .X | ±.1 | | | APPD | | | |
| | | | | .XX | ±.01 | TITLE EXTERNAL WIRING DIAGRAM TYPE "C" W/O PROTECTOR | | SCALE | 1=1 | | |
| | | | | .XXX | ±.005 | | | REF | 005005-01 | | |
| | | | | .XXXX | ±.0005 | | | MAT'L | DECAL - 080642 | | |
| NO. | REVISION | | BY & DATE | CHK | ANG | ±1/2" | FINISH | | LEESON CANADA | PREV | |
| THIS DRAWING IN DESIGN AND DETAIL IS OUR PROPERTY AND MUST NOT BE USED EXCEPT IN CONNECTION WITH OUR WORK ALL RIGHTS OF DESIGN AND INVENTION ARE RESERVED THIS IS AN ELECTRONICALLY GENERATED DOCUMENT - DO NOT SCALE THIS PRINT | | | | RFP | | CAD FILE | | 00539001 | SIZE A | DRAWING NO. 005390-01 | REV |
| | | | | DIST | | | | | | | |



LEESON ELECTRIC CORPORATION

TYPICAL PERFORMANCE CURVE for AC MOTOR

Model No 113912.00

Curve at

220

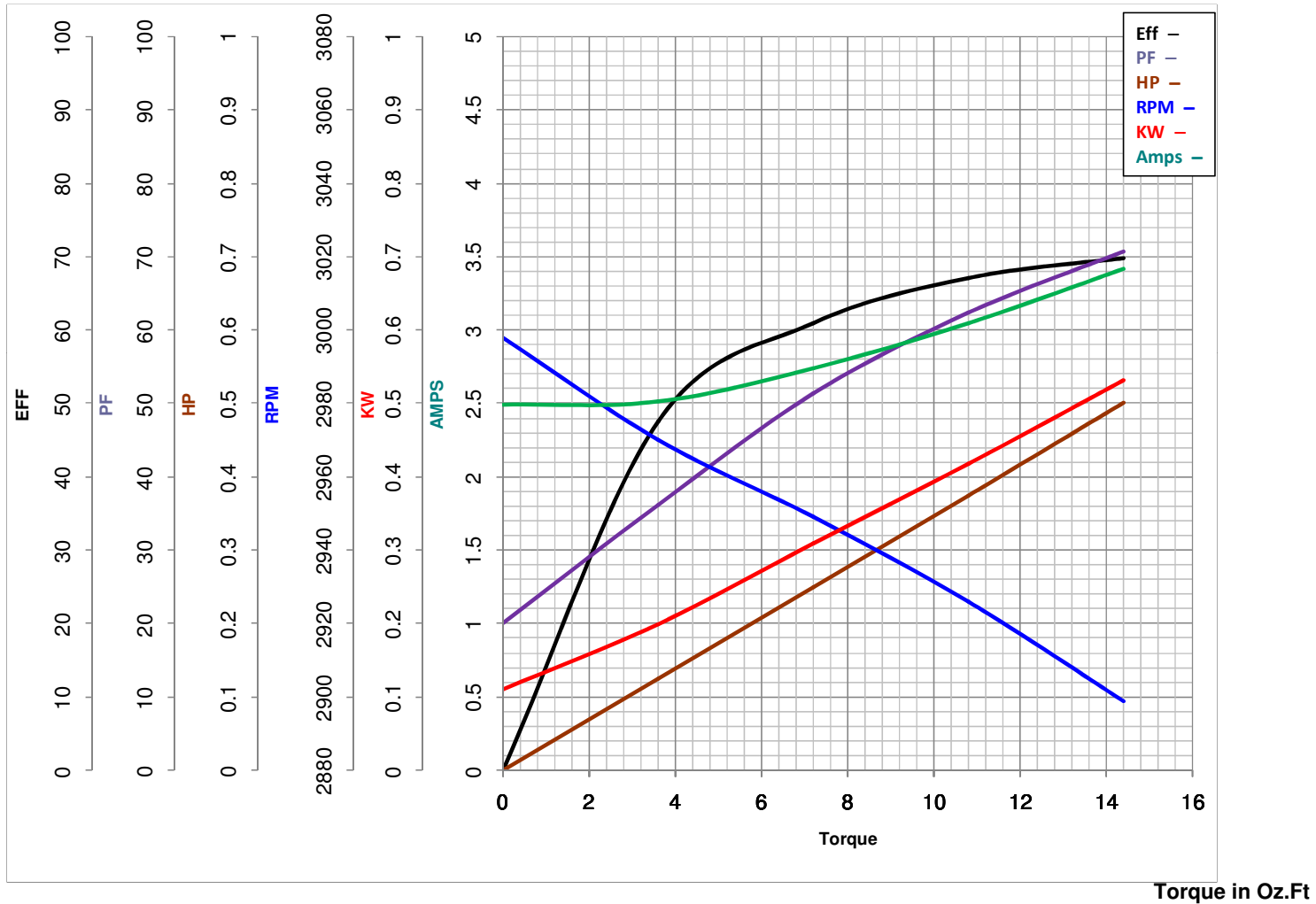
Volts

HP 0.50PHASE 150

HZ

0.5

HP

VOLTS 110/220Catalog No 113912.00HZ 50RPM 2850FL TORQUE 14.4 Oz.FtBD TORQUE 45.0 Oz.FtLR TORQUE 50 Oz.Ft

WINDING C632229-4

FL AMPS 7.6/3.8PU TORQUE 36.0 Oz.FtLR AMPS 19Date 4/12/2018