

PRODUCT INFORMATION PACKET



Model No: C6T17VK68B

Catalog No: 119486.00

119486.00..1HP..1760RPM.56HC.TENV.230/460V.3PH.60HZ.CONT.40C.1.15SF.RIGID C
FACE.C6T17WK47.....WASHDOWN BRAKEMOTOR.T-STATS.....

Brake Motors



Regal and Leeson are trademarks of Regal Beloit Corporation or one of its affiliated companies.

©2018 Regal Beloit Corporation, All Rights Reserved. MC017097E





Nameplate Specifications

Output HP	1 Hp	Output KW	0.75 kW
Frequency	60 Hz	Voltage	208-230/460 V
Current	3.0-2.8/1.4 A	Speed	1750 rpm
Service Factor	1.15	Phase	3
Efficiency	85.5 %	Duty	Continuous
Insulation Class	F	Design Code	B
KVA Code	L	Frame	56HC
Enclosure	Totally Enclosed Non Ventilated	Overload Protector	No
Ambient Temperature	40 °C	Drive End Bearing Size	6205
Opp Drive End Bearing Size	6203	UL	Recognized
CSA	Y	CE	Y
IP Code	55		

Technical Specifications

Electrical Type	Squirrel Cage Induction Run	Starting Method	Across The Line
Poles	4	Rotation	Reversible
Mounting	Rigid base	Motor Orientation	HORIZONTAL
Drive End Bearing	BALL	Opp Drive End Bearing	BALL
Frame Material	Rolled Steel	Shaft Type	NEMA 56
Overall Length	17.00 in	Frame Length	8.00 in
Shaft Diameter	0.625 in	Shaft Extension	1.88 in
Assembly/Box Mounting	F1 ONLY		
Outline Drawing	607-0147-800	Connection Diagram	005010.28

4

3

Uncontrolled Copy

2

1

NOTE:
2.94" REQ'D. TO
REMOVE HOUSING

BRAKE RELEASE
LEVER

BRAKE CONNECTION
DECAL

(2) 1/2-14 NPT CONDUIT
HOLE (PLUGGED)
(1) EACH SIDE

CONNECTION DECAL
UNDER COVER

NAMEPLATE

DRAIN INS.
DECAL

WARNING
DECAL

WASHGUARD FEATURES:

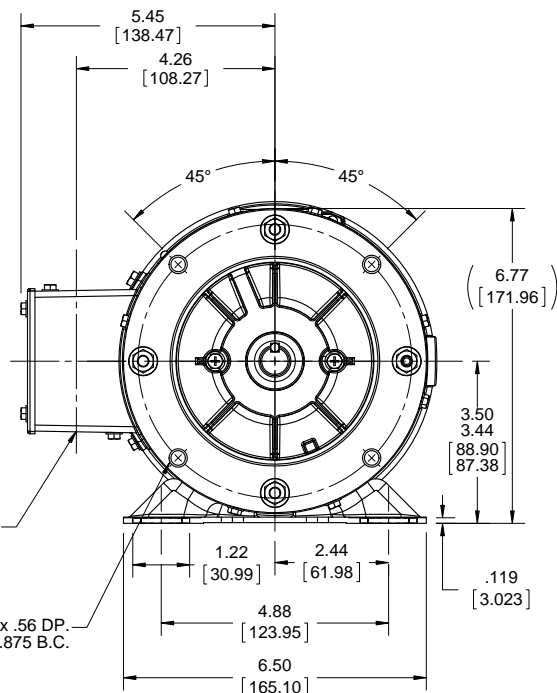
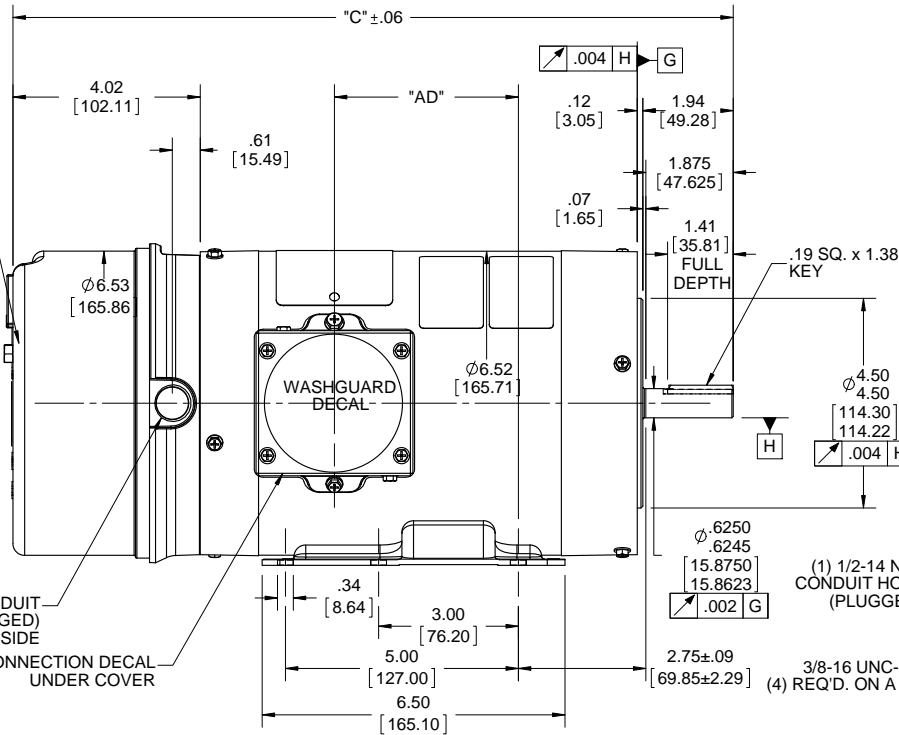
- 1) SHAFT SEAL & V-RING
- 2) PLUGGED DRAIN HOLES IN ENDBELLS & CONDUIT BOX
- 3) STAINLESS STEEL SHAFT, HARDWARE, & NAMEPLATE
- 4) GASKETS THROUGHOUT

DRAWING REVISION	REVISION BY	DATE
D	JD	11/16/2016
ECO	APPROVED BY	DATE
ECO-0113152	JD	11/16/2016
ECO DESCRIPTION		
NEW DRAWING		
COPYRIGHT REGAL BELOIT AMERICA, INC. ALL RIGHTS RESERVED. PROPRIETARY AND CONFIDENTIAL INFORMATION - THIS DOCUMENT IS THE PROPERTY OF REGAL BELOIT AMERICA, INC. (OWNER) AND CONTAINS OWNER'S PROPRIETARY INFORMATION. ANY PERSON, CORPORATION OR OTHER FIRM RECEIVING IT IS DEEMED, BY RECEIVING IT, TO AGREE THAT IT, AND/OR ANY PART OF IT, SHALL NOT BE DISCLOSED TO ANY PERSON, CORPORATION OR OTHER ENTITY, DUPLICATED, AND/OR USED, EXCEPT AS EXPRESSLY APPROVED IN WRITING IN ADVANCE BY OWNER. THIS DOCUMENT SHALL BE RETURNED TO OWNER UPON REQUEST. IT MAY BE SUBJECT TO CERTAIN RESTRICTIONS UNDER APPLICABLE EXPORT CONTROL LAWS AND REGULATIONS.		

TOLERANCES UNLESS OTHERWISE SPECIFIED:			
DEC.	INCH	mm	ANGLE
.X	±0.1	[±2.5]	±0.5°
.XX	±0.01	[±0.25]	
.XXX	±0.005	[±0.127]	
.XXXX	±0.0005	[±0.0127]	
REMOVE BURRS & BREAK SHARP EDGES: .003/.015 [.076/.381] X 45° CORNER FILLETS: R.02 [.51] MACHINED SURFACES: 125 3.2 mm SHOWN IN [BRACKETS] INCH			

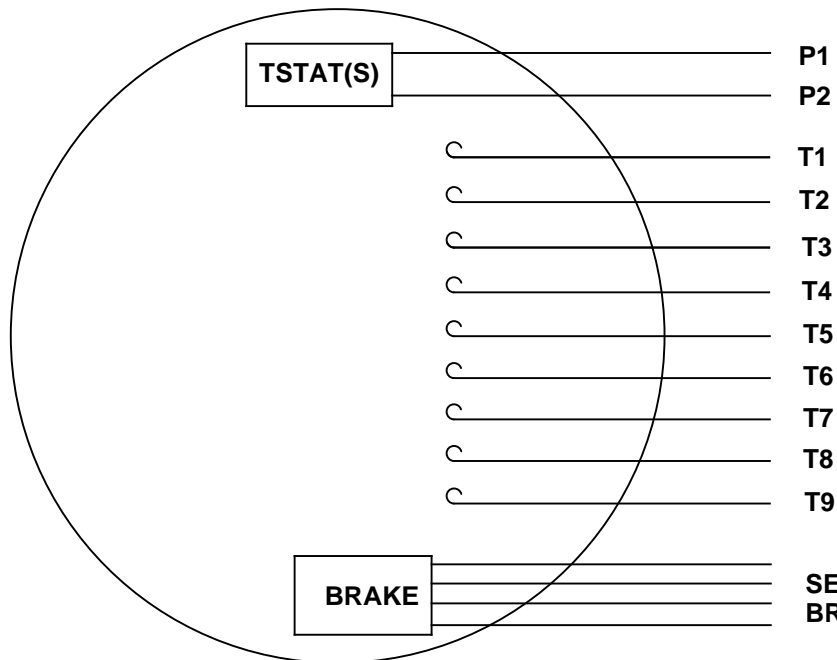
DRAWN BY	DATE
JD	11/15/2016
APPROVED BY	DATE
JD	11/15/2016
REFERENCE	THIRD ANGLE PROJECTION
607-0144	

REGAL™ Regal Beloit America, Inc.	
DESCRIPTION	
OUTLINE	
TENV - RIGID "C" FACE - BRAKEMOTOR	
MATERIAL	PROCESS/FINISH
SIZE	DRAWING NUMBER
B	607-0147
SHEET	
1 OF 1	



DASH NO.	"C"	"AD"
500	14.00	2.44
550	14.50	2.94
600	15.00	3.44
650	15.50	3.94
700	16.00	4.44
750	16.50	4.94
800	17.00	5.44

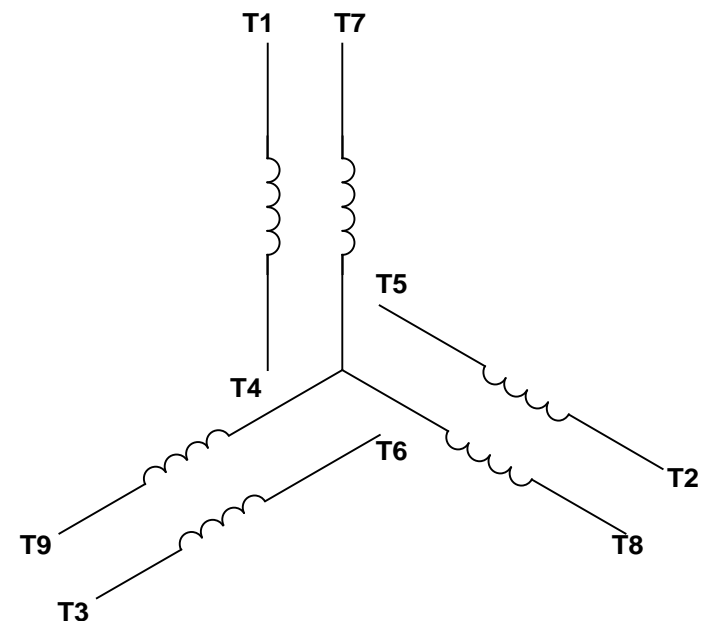
VIEW FROM OUTSIDE OF MOTOR AT SWITCH END.



P1
P2
T1
T2
T3
T4
T5
T6
T7
T8
T9

SEE TABLE FOR
BRAKE CONNECTIONS


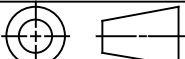
LINE LEADS



RBC PROPRIETARY AND CONFIDENTIAL INFORMATION
This document is the property of REGAL BELOIT CORPORATION ("RBC") including its subsidiaries and divisions and contains proprietary information of RBC. This document is loaned on the express condition that neither it nor the information contained therein shall be disclosed to others without the express written consent of RBC, and that the information shall be used by the recipient only as approved expressly by RBC. This document shall be returned to RBC upon its request. This document may be subject to certain restrictions under U.S. export control laws and regulations.

BRAKE CONNECTION						
VOLTAGE	STERNS BRAKE			DINGS BRAKE		
	L1	L2	Join	L1	L2	Join
HIGH	1(RED)	2(RED)	3(BLACK) 4(BLACK)	2(BLACK)	4(YELLOW)	1(YELLOW) 3(BLACK)
LOW	1(RED) 3(BLACK)	2(RED) 4(BLACK)	-----	2(BLACK) 3(BLACK)	1(YELLOW) 4(YELLOW)	-----

VOLTAGE	L1	L2	L3	JOIN & INSULATE
HIGH	T1	T2	T3	(T4, T7) (T5, T8) (T6, T9)
LOW	T1, T7	T2, T8	T3, T9	T4, T5, T6

				TOLERANCES UNLESS SPECIFIED		 ELECTRIC MOTORS GEARMOTORS AND DRIVES	DRAWN RDW 09/14/99					
				DEC	INCHES		CHK					
				.X	±.1		APPR					
				.XX	±.01		SCALE 1:1					
				.XXX	±.005		REF 005010-15					
--	REDRAWN IN SOLIDWORKS		VJB 02/08/11		.XXXX	±.0005	TITLE EXTERNAL WIRING DIAGRAM 3 PHASE W/O PROTECTOR		FMF			
NO	REVISION		BY & DATE	CHK	ANG	±1/2°	MAT'L DECAL - 004014 DECAL - 080088		PAGE OF			
<div>THIRD ANGLE PROJECTION</div> 				RFP			PREV			SIZE	DRAWING NO	REV
				NETWORK FILE NAME			00501028			A	005010-28	

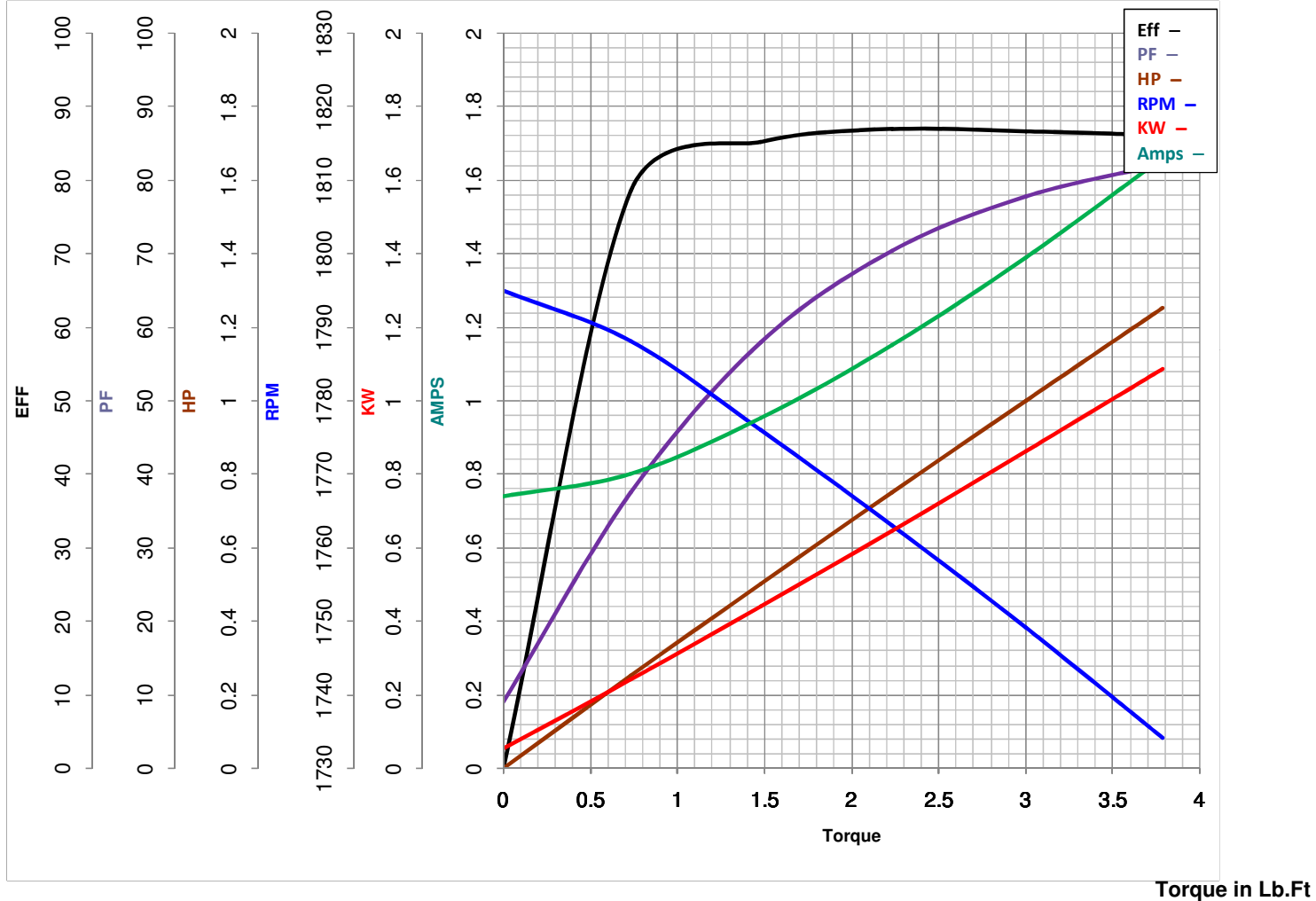
THIRD ANGLE
PROJECTION





LEESON ELECTRIC CORPORATION

TYPICAL PERFORMANCE CURVE for AC MOTOR

Model No 119486.00Curve at 460
60
1Volts
HZ
HPHP 1.00PHASE 3VOLTS 208-230/460Catalog No 119486.00HZ 60RPM 1750

FL TORQUE 3.003 Lb.Ft
 BD TORQUE 12.9 Lb.Ft
 LR TORQUE 10.38 Lb.Ft

FL AMPS 3-2.8/1.4
 PU TORQUE 11.4 Lb.Ft
 LR AMPS 12.43

WINDING T634471-3

Date 5/22/2018