

PRODUCT INFORMATION PACKET



Model No: M143C17FB2K

Catalog No: 120008.00

..1HP..1740RPM.143.TEFC.115/208-

230V.1PH.60HZ.CONT.40C.1.15SF.RIGID.M143C17FB2K.....GENERAL PURPOSE.MANUAL.....

Totally Enclosed Fan Cooled (TEFC)



Regal and Leeson are trademarks of Regal Beloit Corporation or one of its affiliated companies.

©2018 Regal Beloit Corporation, All Rights Reserved. MC017097E

REGAL

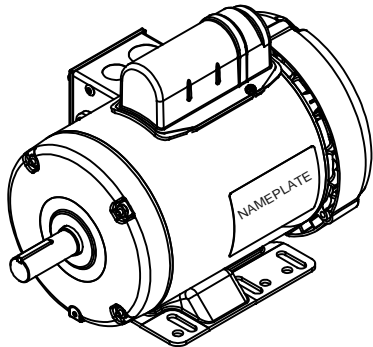
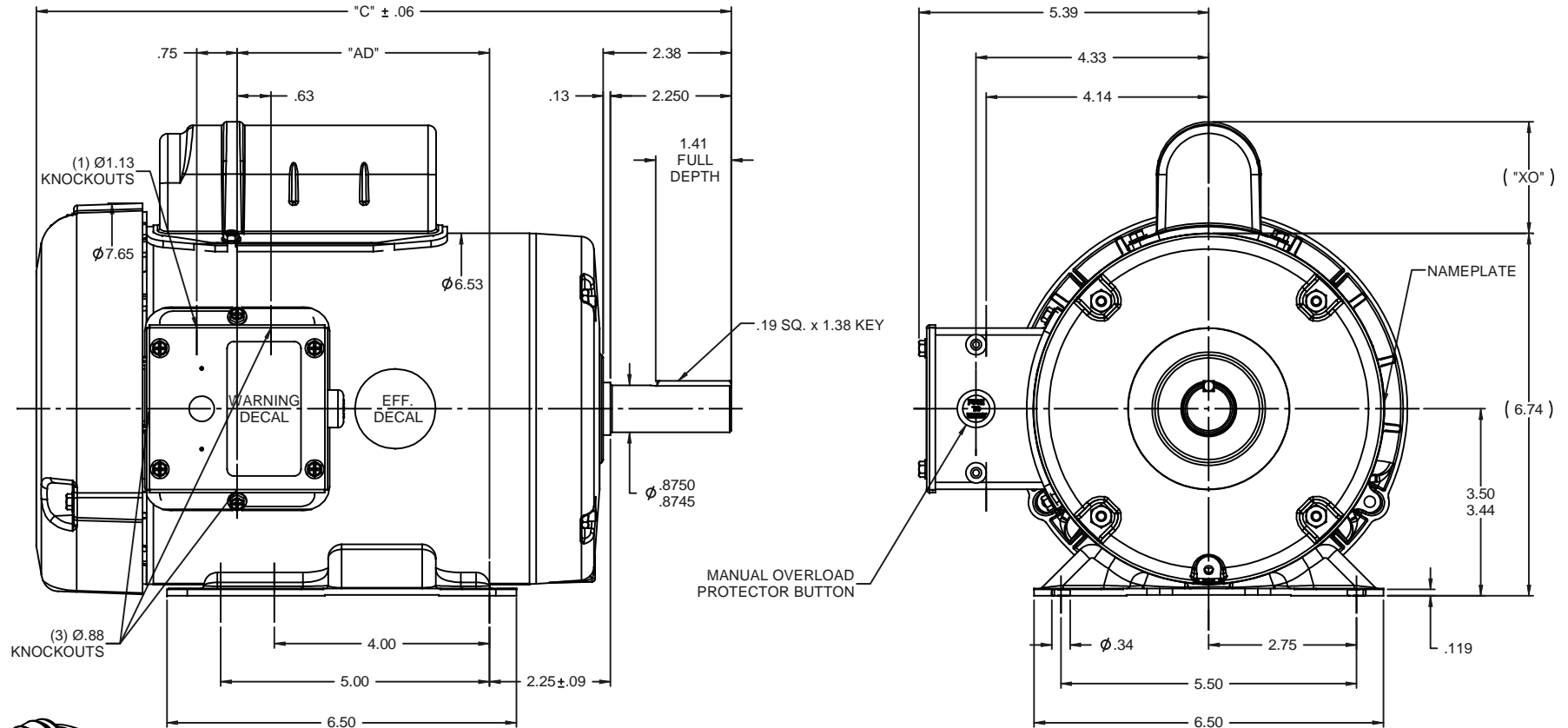


Nameplate Specifications

Output HP	1 Hp	Output KW	0.75 kW
Frequency	60 Hz	Voltage	115/208-230 V
Current	12.8/6.4 A	Speed	1740 rpm
Service Factor	1.15	Phase	1
Efficiency	75 %	Duty	Continuous
Insulation Class	B	Design Code	N
KVA Code	K	Frame	143T
Enclosure	Totally Enclosed Fan Cooled	Overload Protector	Manual
Ambient Temperature	40 °C	Drive End Bearing Size	6205
Opp Drive End Bearing Size	6203	UL	Recognized
CSA	Y	CE	N
IP Code	43		

Technical Specifications

Electrical Type	Capacitor Start Induction Run	Starting Method	Across The Line
Poles	4	Rotation	Selective Counterclockwise
Mounting	Rigid base	Motor Orientation	HORIZONTAL
Drive End Bearing	BALL	Opp Drive End Bearing	BALL
Frame Material	Rolled Steel	Shaft Type	T
Overall Length	12.93 in	Frame Length	7.00 in
Shaft Diameter	0.875 in	Shaft Extension	2.25 in
Assembly/Box Mounting	F1 ONLY		
Outline Drawing	028904-700B	Connection Diagram	005003.03

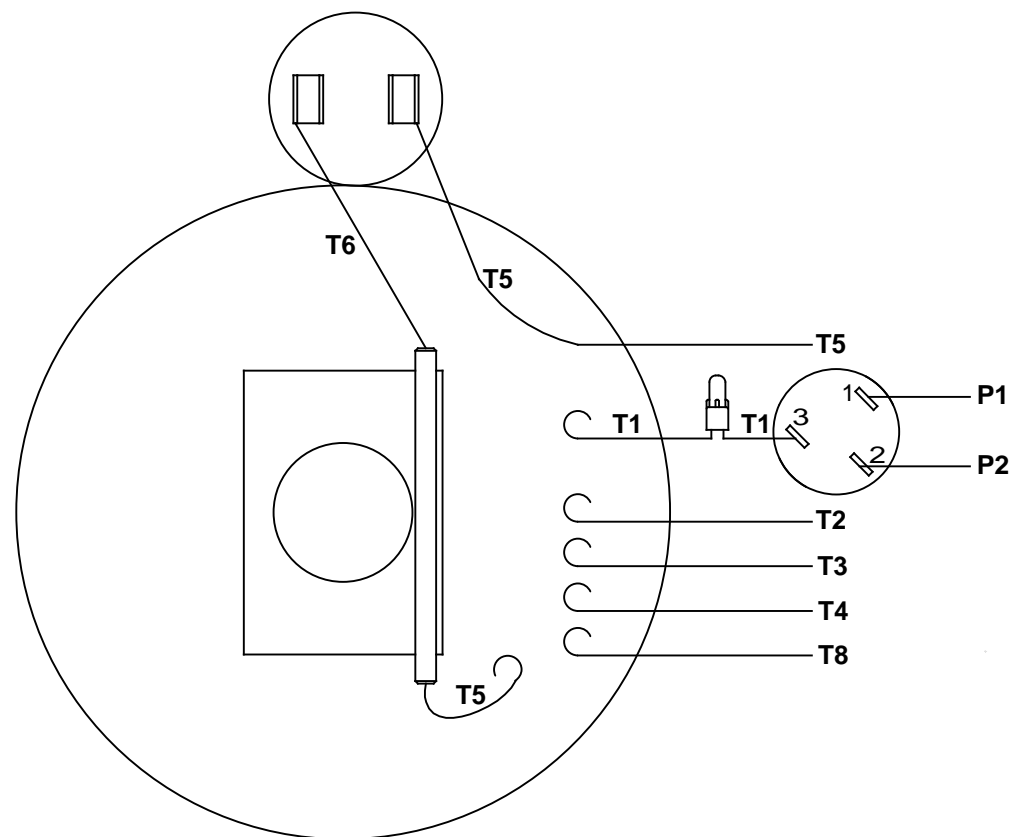


DASH NO.	"C"	"AD"	CAP. DASH	"XO"
700	12.93	4.69	A	1.54
750	13.43	5.19	A	1.54
800	13.93	5.69	B	2.01
850	14.43	6.19	C	2.25

NOTE:
1) GASKETS THROUGHOUT

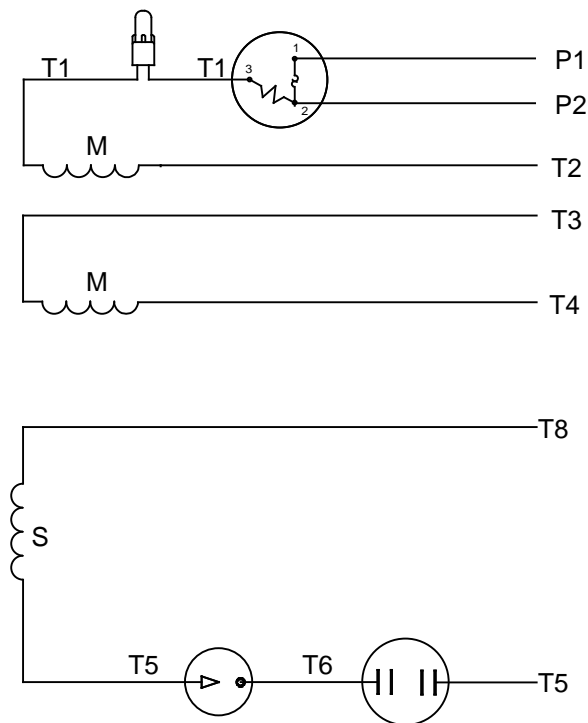
TOLERANCES UNLESS SPECIFIED				LEESON ELECTRIC MOTORS GEARMOTORS AND DRIVES		DRAWN GRB 11/26/08	
DEC	INCHES					CHK	DJ 11/26/08
X	±.1			TITLE OUTLINE - 140 FRAME		APPR	DJ 11/26/08
XX	±.03			TEFC - RIGID BASE		SCALE	1:2
XXX	±.005					REF	033100
XXXX	±.0005					FMF	120008.00
NO	REVISION	BY & DATE	CHK	ANG	±1/2"	FINISH	PAGE 1 OF 1
	THIRD ANGLE PROJECTION		RFP	11/26/08	PREV	SIZE B	DRAWING NO 028904
							REV

VIEW FROM OUTSIDE OF MOTOR AT SWITCH END


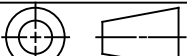


RBC PROPRIETARY AND CONFIDENTIAL INFORMATION
This document is the property of REGAL BELOIT CORPORATION ("RBC") including its subsidiaries and divisions and contains proprietary information of RBC. This document is loaned on the express condition that neither it nor the information contained therein shall be disclosed to others without the express written consent of RBC, and that the information shall be used by the recipient only as approved expressly by RBC. This document shall be returned to RBC upon its request. This document may be subject to certain restrictions under U.S. export control laws and regulations.

LINE LEADS



	ROTATION FACING LEAD END	L1	L2	JOIN	INSULATE SEPARATELY
HIGH VOLT	C.C.W.	P1	T4 T5	T2,T3 T8	P2
	C.W.	P1	T4 T8	T2,T3 T5	P2
LOW VOLT	C.C.W.	P1	T2,T4 T5	P2,T3 T8	---
	C.W.	P1	T2,T4 T8	P2,T3 T5	---

				TOLERANCES UNLESS SPECIFIED			ELECTRIC MOTORS GEARMOTORS AND DRIVES		DRAWN WLW 08/20/79		
				DEC	INCHES		CHK	ADN 08/27/76			
				.X	±.1		APPR	WRK 08/27/76			
				.XX	±.01	TITLE EXTERNAL WIRING DIAGRAM				SCALE 1:1	
06	REDRAWN IN SOLIDWORKS	VJB 7/22/2011		.XXX	±.005	TYPE "C" W/PROTECTOR				REF	
05	REDRAWN ON CAD	DBT 05/27/97		.XXXX	±.0005	MAT'L DECAL - 004011				FMF	
NO	REVISION	BY & DATE	CHK	ANG	±1/2°	FINISH				PAGE OF	
THIRD ANGLE PROJECTION					RFP		PREV		SIZE	DRAWING NO	REV
					NETWORK FILE NAME		00500303		A	005003-03	06

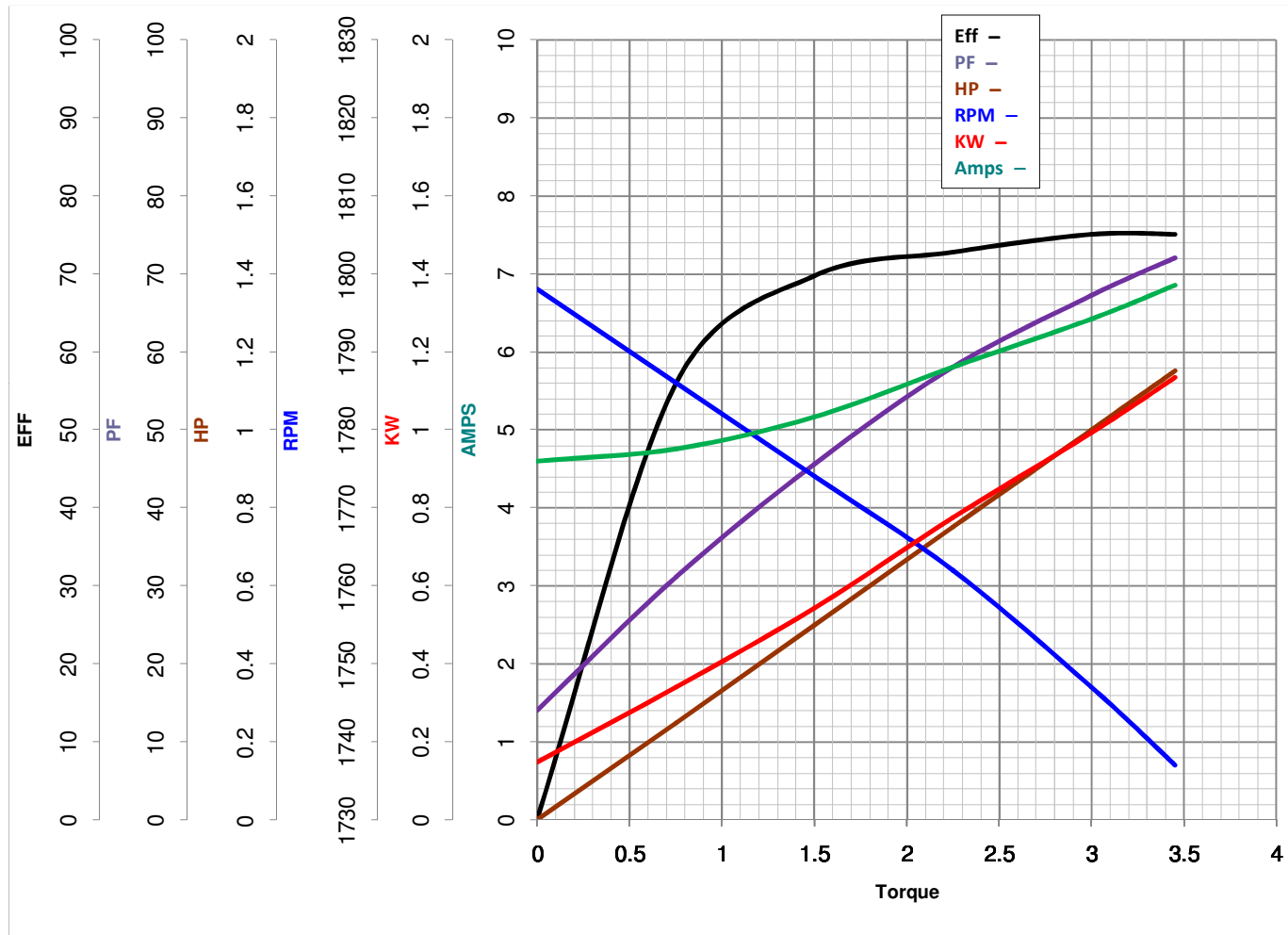


LEESON ELECTRIC CORPORATION

TYPICAL PERFORMANCE CURVE for AC MOTOR

Model No 120008.00

Curve at

230
60
1Volts
HZ
HPHP 1.00PHASE 1VOLTS 115/208-230Catalog No 120008.00HZ 60RPM 1740

Torque in Lb.Ft

FL TORQUE 3 Lb.Ft
 BD TORQUE 7.0 Lb.Ft
 LR TORQUE 9 Lb.Ft

FL AMPS 12.8/6.4
 PU TORQUE 6.7 Lb.Ft
 LR AMPS 33

WINDING C634256-3

Date 3/28/2018