

PRODUCT INFORMATION PACKET



Model No: A6C17FB5K

Catalog No: 110018.00

1HP..1725RPM.56.TEFC./V.1PH.60HZ.CONT.AUTOMATIC.40C.1.15SF.RIGID.GENERAL
PURPOSE.A6C17FB5K

Totally Enclosed Fan Cooled (TEFC)



Regal and Leeson are trademarks of Regal Beloit Corporation or one of its affiliated companies.

©2018 Regal Beloit Corporation, All Rights Reserved. MC017097E



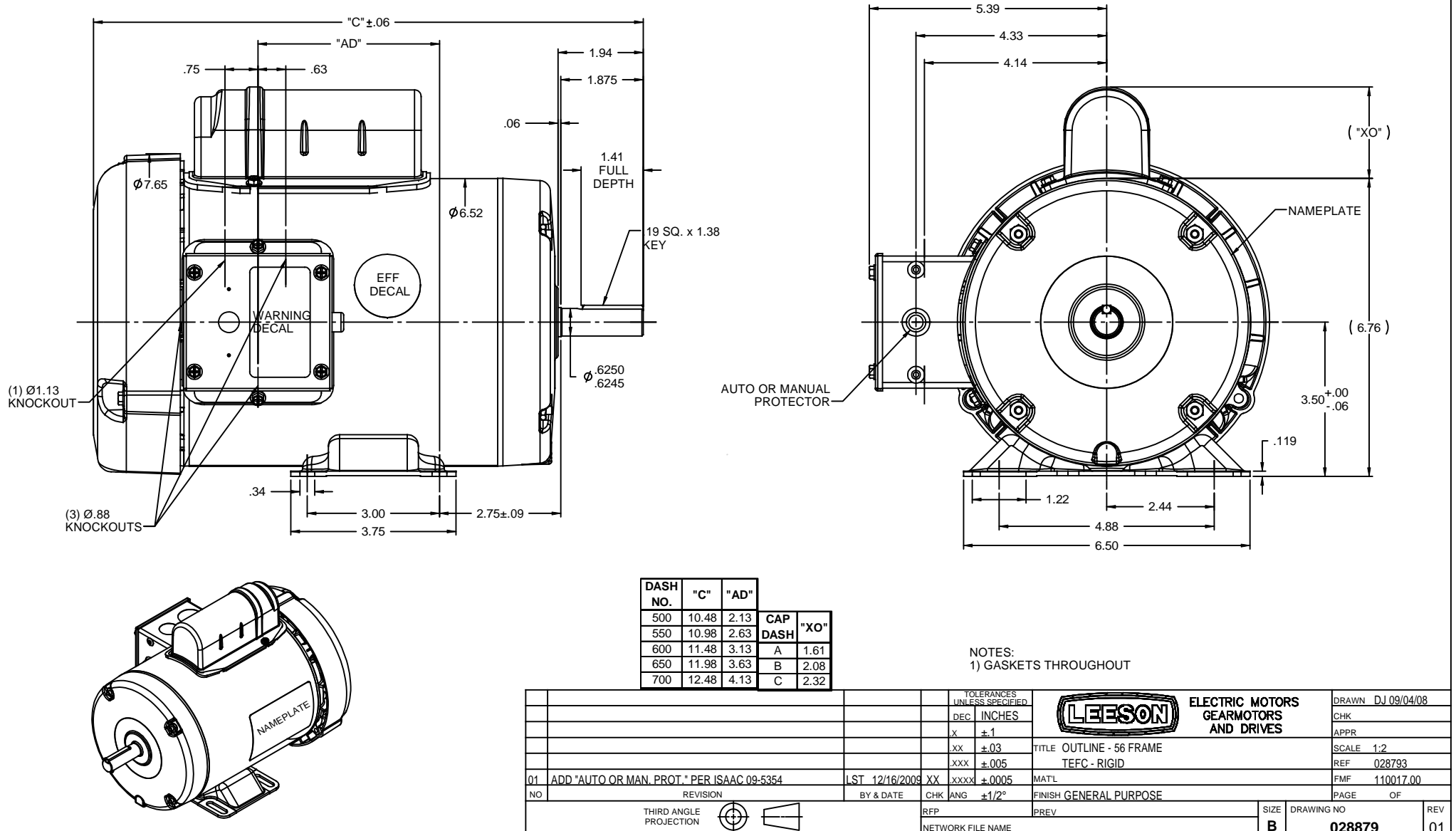


Nameplate Specifications

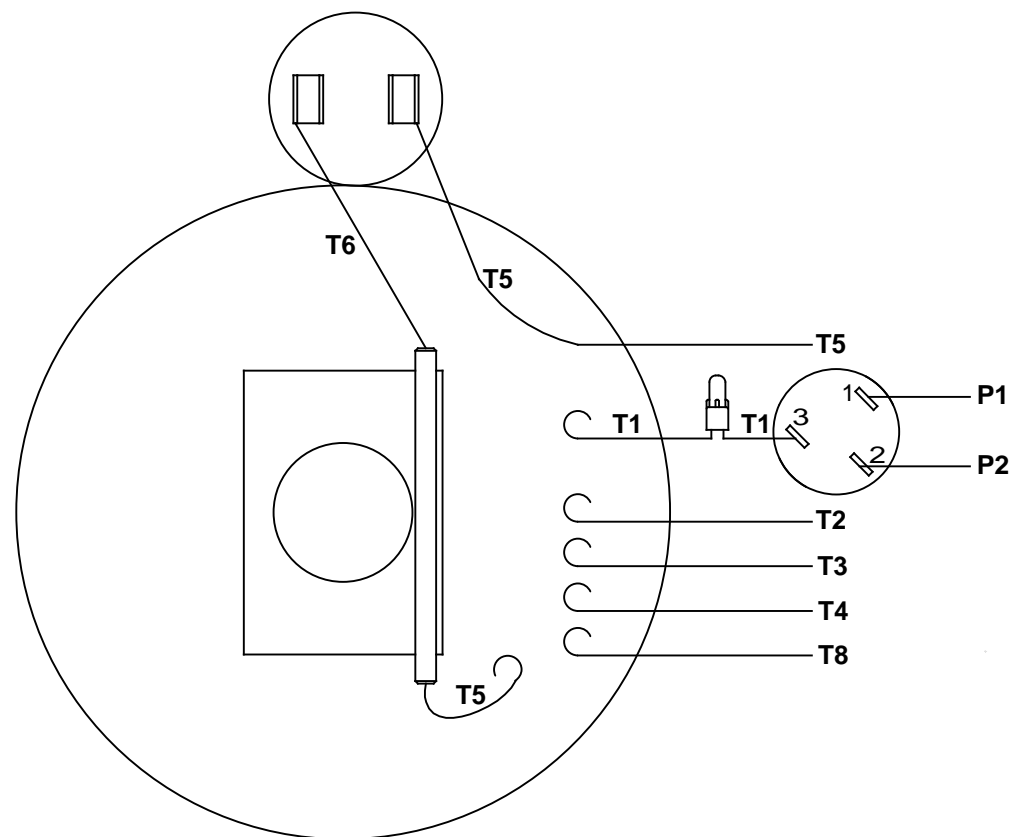
Output HP	1 Hp	Output KW	0.75 kW
Frequency	60 Hz	Voltage	115/208-230 V
Current	12.8/6.4 A	Speed	1725 rpm
Service Factor	1.15	Phase	1
Efficiency	75 %	Duty	Continuous
Insulation Class	B	Design Code	N
KVA Code	K	Frame	56
Enclosure	Totally Enclosed Fan Cooled	Overload Protector	Automatic
Ambient Temperature	40 °C	Drive End Bearing Size	6203
Opp Drive End Bearing Size	6203	UL	Recognized
CSA	Y	CE	N
IP Code	43		

Technical Specifications

Electrical Type	Capacitor Start Induction Run	Starting Method	Across The Line
Poles	4	Rotation	Selective Counterclockwise
Mounting	Rigid base	Motor Orientation	HORIZONTAL
Drive End Bearing	BALL	Opp Drive End Bearing	BALL
Frame Material	Rolled Steel	Shaft Type	NEMA 56
Overall Length	11.98 in	Frame Length	6.50 in
Shaft Diameter	0.625 in	Shaft Extension	1.88 in
Assembly/Box Mounting	F1 ONLY		
Outline Drawing	028879-650B	Connection Diagram	005003.03

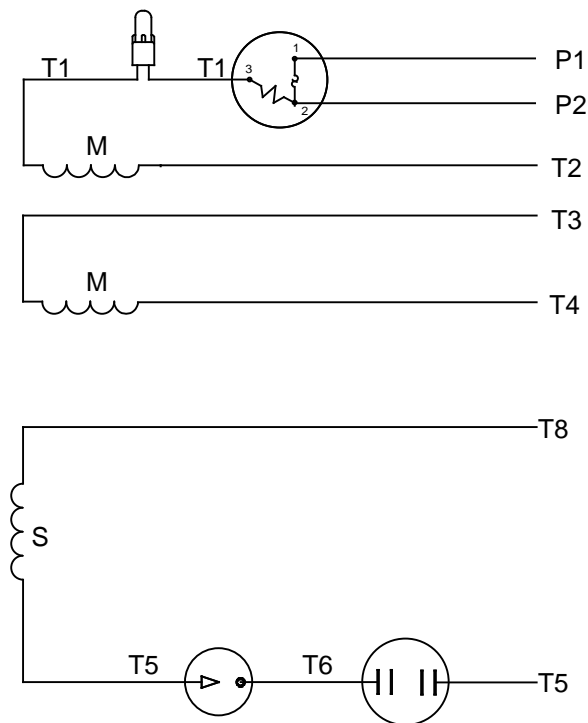


VIEW FROM OUTSIDE OF MOTOR AT SWITCH END



RBC PROPRIETARY AND CONFIDENTIAL INFORMATION
This document is the property of REGAL BELOIT CORPORATION ("RBC") including its subsidiaries and divisions and contains proprietary information of RBC. This document is loaned on the express condition that neither it nor the information contained therein shall be disclosed to others without the express written consent of RBC, and that the information shall be used by the recipient only as approved expressly by RBC. This document shall be returned to RBC upon its request. This document may be subject to certain restrictions under U.S. export control laws and regulations.

LINE LEADS



	ROTATION FACING LEAD END	L1	L2	JOIN	INSULATE SEPARATELY
HIGH VOLT	C.C.W.	P1	T4 T5	T2,T3 T8	P2
	C.W.	P1	T4 T8	T2,T3 T5	P2
LOW VOLT	C.C.W.	P1	T2,T4 T5	P2,T3 T8	---
	C.W.	P1	T2,T4 T8	P2,T3 T5	---

		TOLERANCES UNLESS SPECIFIED	
		DEC	INCHES
		.X	±.1
		.XX	±.01
06	REDRAWN IN SOLIDWORKS	VJB	7/22/2011
05	REDRAWN ON CAD	DBT	05/27/97
NO	REVISION	BY & DATE	CHK ANG ±1/2°



ELECTRIC MOTORS
GEARMOTORS
AND DRIVES

DRAWN WLW 08/20/79
CHK ADN 08/27/76
APPR WRK 08/27/76

TITLE EXTERNAL WIRING DIAGRAM
TYPE "C" W/PROTECTOR

MAT'L DECAL - 004011

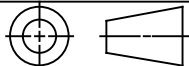
FINISH

SCALE 1:1
REF

FMF

PAGE OF

THIRD ANGLE
PROJECTION



RFP
NETWORK FILE NAME 00500303

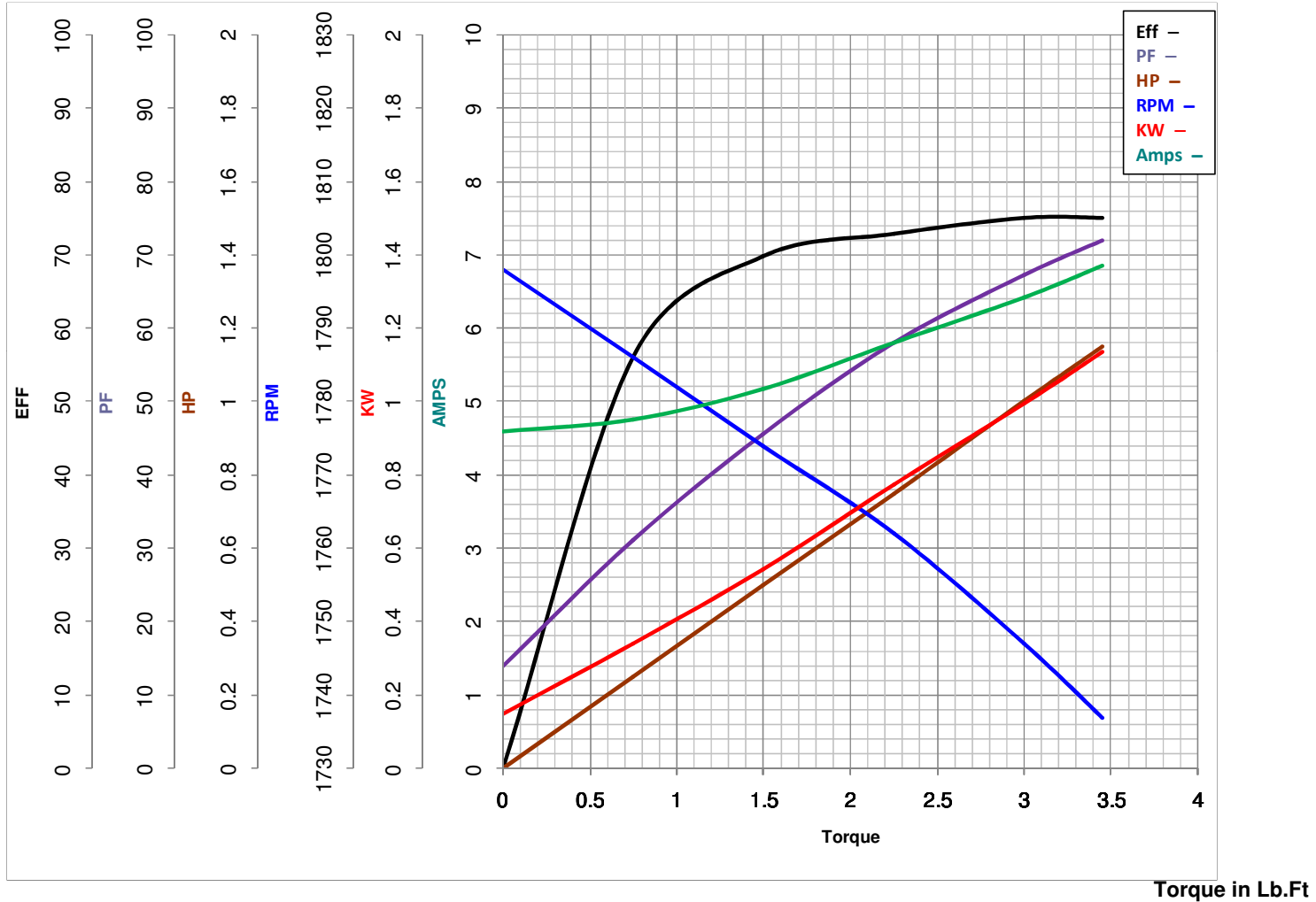
PREV

SIZE A
DRAWING NO 005003-03
REV 06



LEESON ELECTRIC CORPORATION

TYPICAL PERFORMANCE CURVE for AC MOTOR

Model No 110018.00Curve at 230
60
1Volts
HZ
HPHP 1.00PHASE 1VOLTS 115/208-230Catalog No 110018.00HZ 60RPM 1725

FL TORQUE 3 Lb.Ft
 BD TORQUE 7.0 Lb.Ft
 LR TORQUE 9 Lb.Ft

FL AMPS 12.8/6.4
 PU TORQUE 6.7 Lb.Ft
 LR AMPS 33

WINDING C634256-3

Date 3/22/2018