

PRODUCT INFORMATION PACKET

marathon[®]
Motors

Model No: 048A11O1410
Catalog No: X295
1/2,1075,OPEN,48Y,1/60/230
Pedestal Fan



Regal and Marathon are trademarks of Regal Beloit Corporation or one of its affiliated companies.
©2018 Regal Beloit Corporation, All Rights Reserved. MC017097E

REGAL

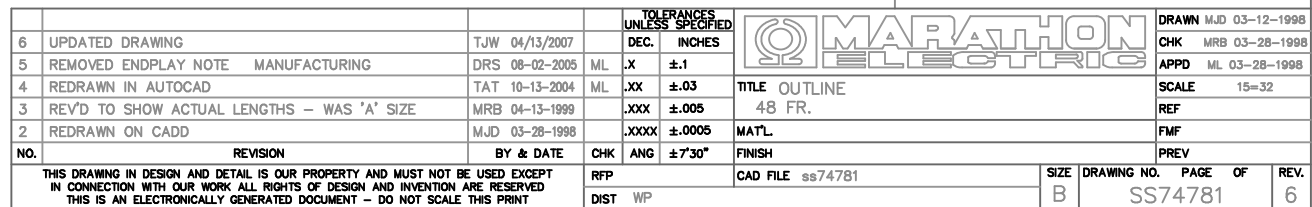


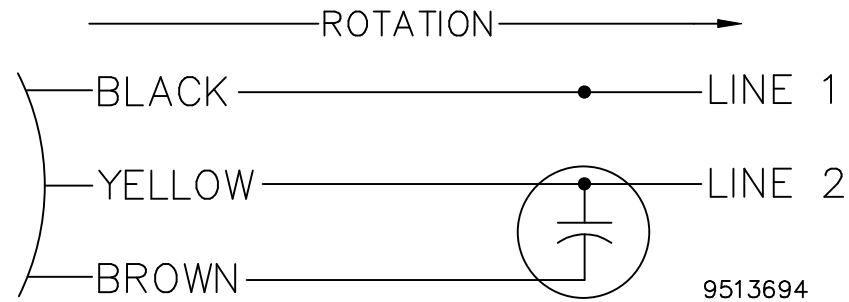
Nameplate Specifications


Output HP	0.5 Hp	Output KW	0.37 kW
Frequency	60 Hz	Voltage	230 V
Current	3.9 A	Speed	1050 rpm
Service Factor	1	Phase	1
Efficiency	72 %	Duty	CONTINUOUS
Insulation Class	B	Design Code	NO DESIGN CODE
KVA Code	B	Frame	48Y
Enclosure	OPAO	Overload Protector	AUT LCK RTR ONLY
Ambient Temperature	40 °C	Drive End Bearing Size	6203
Opp Drive End Bearing Size	6203	UL	Recognized
CSA	Y	CE	N
IP Code	1		

Technical Specifications

Electrical Type	PSC 1 SPEED	Starting Method	ACROSS THE LINE
Poles	6	Rotation	FIXED CW
Mounting	ROUND BELLY BAND	Motor Orientation	HORIZONTAL
Drive End Bearing	BALL	Opp Drive End Bearing	BALL
Frame Material	ROLLED STEEL	Shaft Type	DBL SPL EXT
Overall Length	23.47 in	Frame Length	4.5 in
Shaft Diameter	0.5 in	Shaft Extension	9.20/9.27 in
Assembly/Box Mounting	F2 ONLY		
Outline Drawing	B-SS74781-450	Connection Diagram	9513694





				TOLERANCES UNLESS SPECIFIED		REGAL-BELOIT 	DRAWN ML 06/06/1989					
				DEC.	INCHES		CHK TOM 06/06/19989					
				.X	±.1		APPD					
				.XX	±.02		SCALE 1=1					
2	REDRAWN ON AUTOCAD	JMS 03/21/2005		.XXX	±.005	TITLE CONNECTION DIAGRAM INSERT			REF			
1	NEW DRAWING	ML 06/06/1989		.XXXX	±.0005				MAT'L.			FMF
NO.	REVISION	BY & DATE	CHK	ANG	±7'30"	FINISH			PREV			
THIS DRAWING IN DESIGN AND DETAIL IS OUR PROPERTY AND MUST NOT BE USED EXCEPT IN CONNECTION WITH OUR WORK ALL RIGHTS OF DESIGN AND INVENTION ARE RESERVED THIS IS AN ELECTRONICALLY GENERATED DOCUMENT – DO NOT SCALE THIS PRINT			RFP		CAD FILE 9513694			SIZE	DRAWING NO.	PAGE	OF	REV.
			DIST WP					A	9513694			2

CERTIFICATION DATA SHEET

Model#:

48A1101410 B

WINDING#:

PE4861503 NONE 2

CONN. DIAGRAM:

9513694

ASSEMBLY:

F2 ONLY

OUTLINE:

B-SS74781-450

TYPICAL MOTOR PERFORMANCE DATA

HP	KW	SYNC. RPM	F.L. RPM	FRAME	ENCLOSURE	KVA CODE	DESIGN
1/2	.37	1200	1050	48Y	OPAO	B	NO DESIGN CODE

PH	Hz	VOLTS	FL AMPS	START TYPE	DUTY	INSL	S.F	AMB°C	ELEVATION
1	60	230	3.9	ACROSS THE LINE	CONTINUOUS	B3	1.0	40	3300

FULL LOAD EFF: 72	3/4 LOAD EFF: -	1/2 LOAD EFF: -	GTD. EFF	ELEC. TYPE	NO LOAD AMPS
FULL LOAD PF: 88.5	3/4 LOAD PF: -	1/2 LOAD PF: -	0	PSC 1 SPEED	1.1

F.L. TORQUE	LOCKED ROTOR AMPS	L.R. TORQUE	B.D. TORQUE	F.L. RISE°C
38 LB-FT	7.2	8 LB-FT -	52 LB-FT -	0

SOUND PRESSURE @ 3 FT.	SOUND POWER	ROTOR WK^2	MAX. WK^2	SAFE STALL TIME	STARTS /HOUR	APPROX. MOTOR WGT
- dBA	- dBA	0 LB-FT^2	- LB-FT^2	- SEC.	-	0 LBS.

*** SUPPLEMENTAL INFORMATION ***

DE BRACKET TYPE	ODE BRACKET TYPE	MOUNT TYPE	ORIENTATION	SEVERE DUTY	HAZARDOUS LOCATION	DRIP COVER	SCREENS	PAINT
STANDARD	STANDARD	ROUND BELLY BAND	HORIZONTAL	FALSE	NONE	FALSE	NONE	GRAY (POWDER)

BEARINGS		GREASE	SHAFT TYPE	SPECIAL DE	SPECIAL ODE	SHAFT MATERIAL	FRAME MATERIAL
DE	OPE	MULTEMP SRL	DBL SPL EXT	0.500 x 3.80 WITH 3.00 FULL FLAT	0.500 x 3.80 WITH 3.00 FULL FLAT	1144 STRESSPROOF (C-223)	ROLLED STEEL
BALL	BALL						
6203	6203						

THERMO-PROTECTORS				THERMISTORS	CONTROL	SPACE /n HEATERS
THERMOSTATS	PROTECTORS	WDG RTDs	BRG RTDs	NONE	FALSE	NONE VOLTS
NONE	AUT LCK RTR ONLY	NONE	NONE			

*
N
O
T
E
S
*

If Inverter equals NONE, contact factory for further information

INVERTER TORQUE: NONE
INV. HP SPEED RANGE: NONE
ENCODER: NONE
NONE NONE
NONE NONE PPR
BRAKE: NONE NONE
NONE P/N NONE
NONE NONE
NONE FT-LB NONE V NONE Hz