

PRODUCT INFORMATION PACKET



Model No: C42P17NZ1B

Catalog No: 096000.00

PE350...336:1.5/4RPM.310LBIN..08HP.L42Y...AC GEARMOTORS SUB-
FHP.115/230V.1PH.60/50HZ.TENV.C42P17NZ1B

PE350 Series



Regal and Leeson are trademarks of Regal Beloit Corporation or one of its affiliated companies.

©2018 Regal Beloit Corporation, All Rights Reserved. MC017097E





Nameplate Specifications

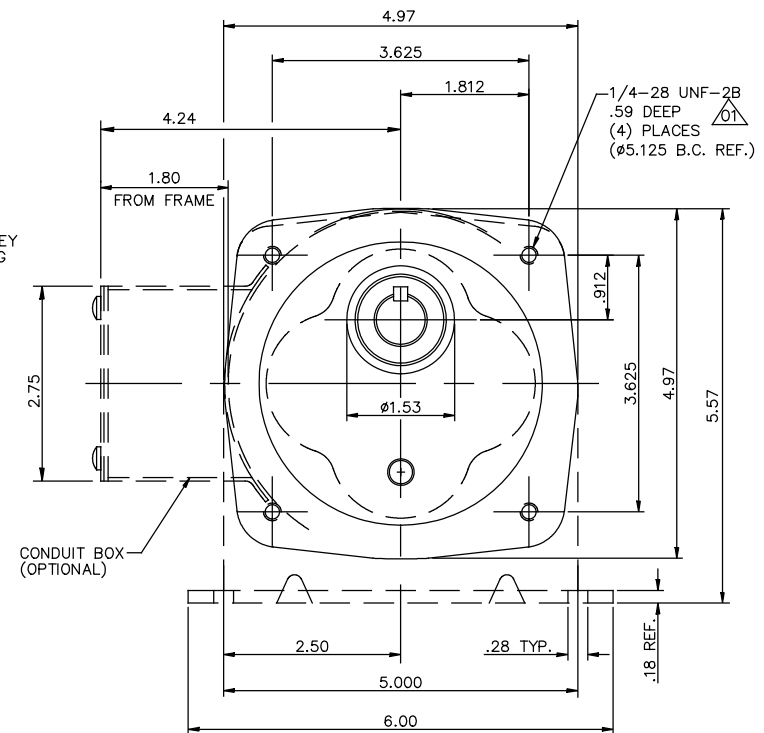
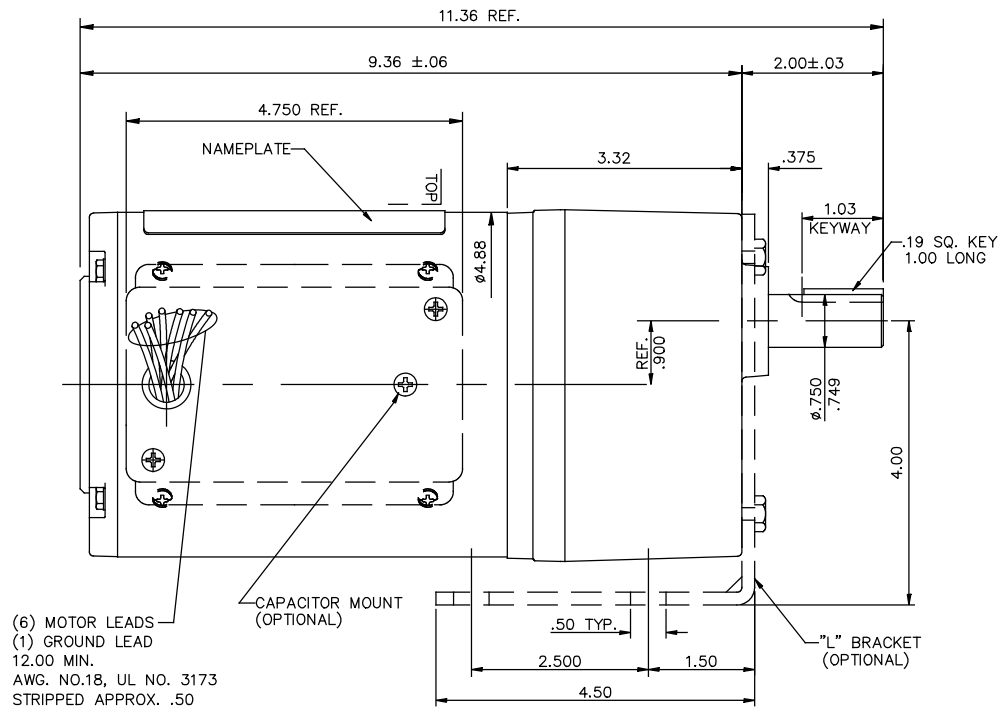
Output HP	0.08 Hp	Output KW	0.06 kW
Frequency	60 Hz	Voltage	110 V
Current	1.3/0.65 A	Speed	5 rpm
Service Factor	1	Phase	1
Duty	Continuous	Insulation Class	F
KVA Code	G	Frame	L42Y
Enclosure	Totally Enclosed Non Ventilated	Overload Protector	No
Ambient Temperature	55 °C	Drive End Bearing Size	6203
Opp Drive End Bearing Size	6201	UL	Recognized
CSA	Y	CE	N

Technical Specifications

Rotation	Reversible	Mounting	Special
Shaft Type	Parallel	Overall Length	11.36 in
Frame Length	5.50 in	Shaft Diameter	0.750 in
Shaft Extension	1.625 in		
Outline Drawing	027690-096000	Connection Diagram	005108.05

This is an uncontrolled document once printed or downloaded and is subject to change without notice. Date Created: 10/15/2018

027690

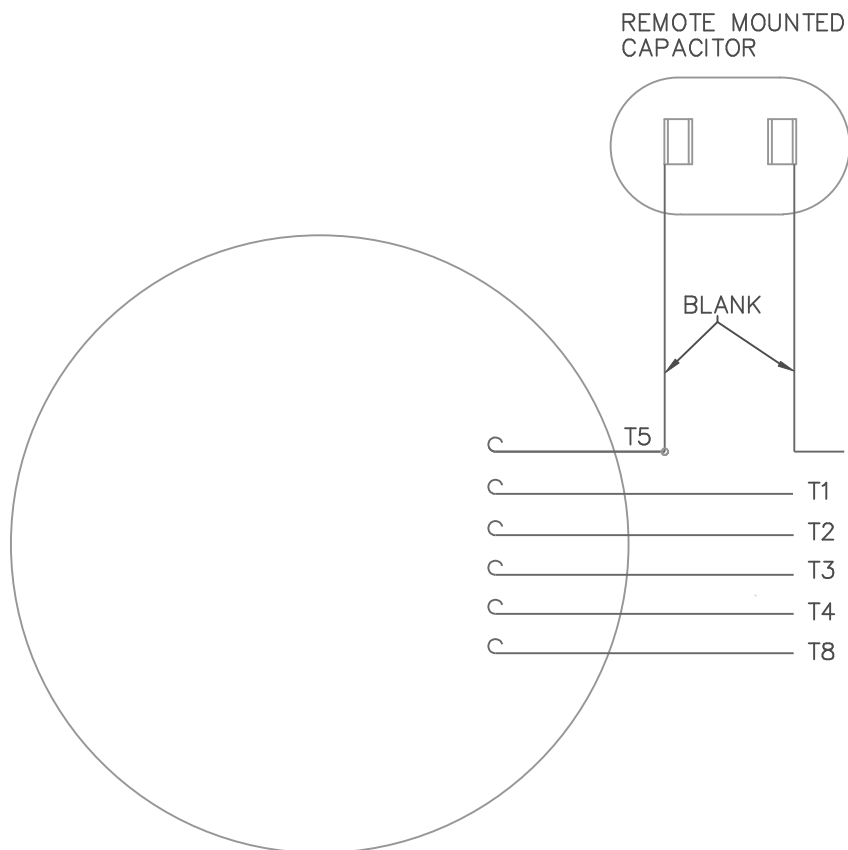


CATALOG NUMBER	OUTPUT RPM	FULL LOAD TORQUE LB.-IN.	INPUT HP	OVERHUNG LOAD LBS.	RATIO TO 1
096000.00	5	310	1/12	565	336
096001.00	9	341	1/12	491	180
096002.00	14	280	1/12	459	124
096003.00	19	250	1/12	374	91

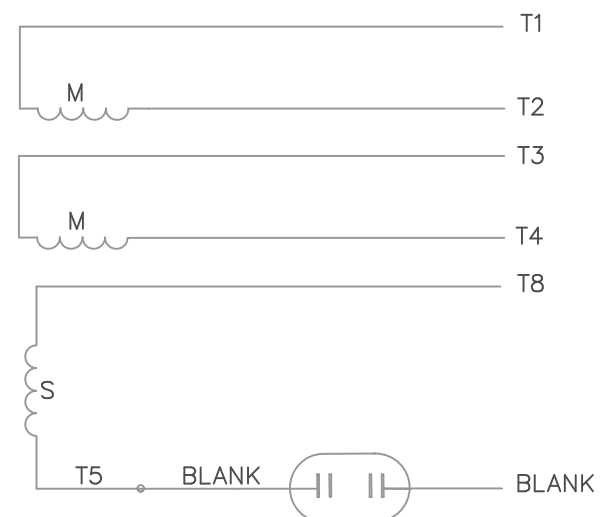
						TOLERANCES UNLESS OTHERWISE SPECIFIED		LEESON ELECTRIC CORPORATION			
						DECIMALS					
						.00	± .01	DRAWN DWG 7/14/97	TITLE		
						.000	± .005	CH'KD.	OUTLINE DRAWING 42 FRAME PE350 STOCK		
01	THREAD DEPTH WAS .63"			JD	06/06/17	.0000	± .0005	APPR.	MAT'L		
NO.	REVISION			BY	DATE	FRACTIONS	± 1/64	SCALE 1=1.5			
THIS DRAWING IN DESIGN AND DETAIL IS OUR PROPERTY AND MUST NOT BE USED EXCEPT IN CONNECTION WITH OUR WORK						ANGLES		REF. 027689	FINISH LEESON	SIZE B	
ALL RIGHTS OF DESIGN AND INVENTION ARE RESERVED						INCH/MM		FIMF 096000.00	STOCK	DRAWING NO. 027690	

005108-05

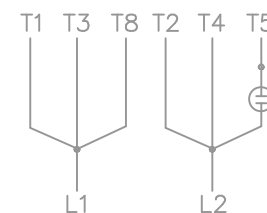
VIEW FROM OUTSIDE OF MOTOR AT LEAD END.



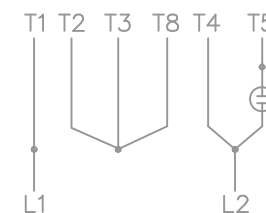
LINE LEADS



LOW VOLTAGE



HIGH VOLTAGE



2 STAGE:
C.C.W. ROTATION FACING LEAD END AS SHOWN
INTERCHANGE LEADS T5 & T8 FOR C.W.

3 STAGE:
CW ROTATION FACING LEAD END AS SHOWN
INTERCHANGE LEADS T5 & T8 FOR CCW

				TOLERANCES UNLESS OTHERWISE SPECIFIED		LEESON ELECTRIC CORPORATION					
				DECIMALS							
				.00	± .01	DRAWN DBT 07/21/97	TITLE EXTERNAL WIRING DIAGRAM TYPE "P" W/O PROTECTOR MAT'L TAG - 080689.02 - 2 STAGE TAG - 080689.01 - 3 STAGE				
				.000	± .005	CH'K'D.					
				.0000	± .0005	APPR.					
NO.	REVISION		BY	DATE	FRACTIONS	± 1/64	SCALE 1=1				
THIS DRAWING IN DESIGN AND DETAIL IS OUR PROPERTY AND MUST NOT BE USED EXCEPT IN CONNECTION WITH OUR WORK ALL RIGHTS OF DESIGN AND INVENTION ARE RESERVED					ANGLES	± 1/2'	REF. 005018-01	FINISH LEESON		SIZE A	DRAWING NO. 005108-05
					INCH/MM		FMF	GEARMOTORS			