

PRODUCT INFORMATION PACKET



Model No: 980.549A

Catalog No: 980.549

1/15HP.3000RPM.56D.IP44.90V.S1.40C.1,0SF.B14.COMMERCIAL DUTY.980.549A

Metric Motors



Regal and Leeson are trademarks of Regal Beloit Corporation or one of its affiliated companies.

©2018 Regal Beloit Corporation, All Rights Reserved. MC017097E





Nameplate Specifications

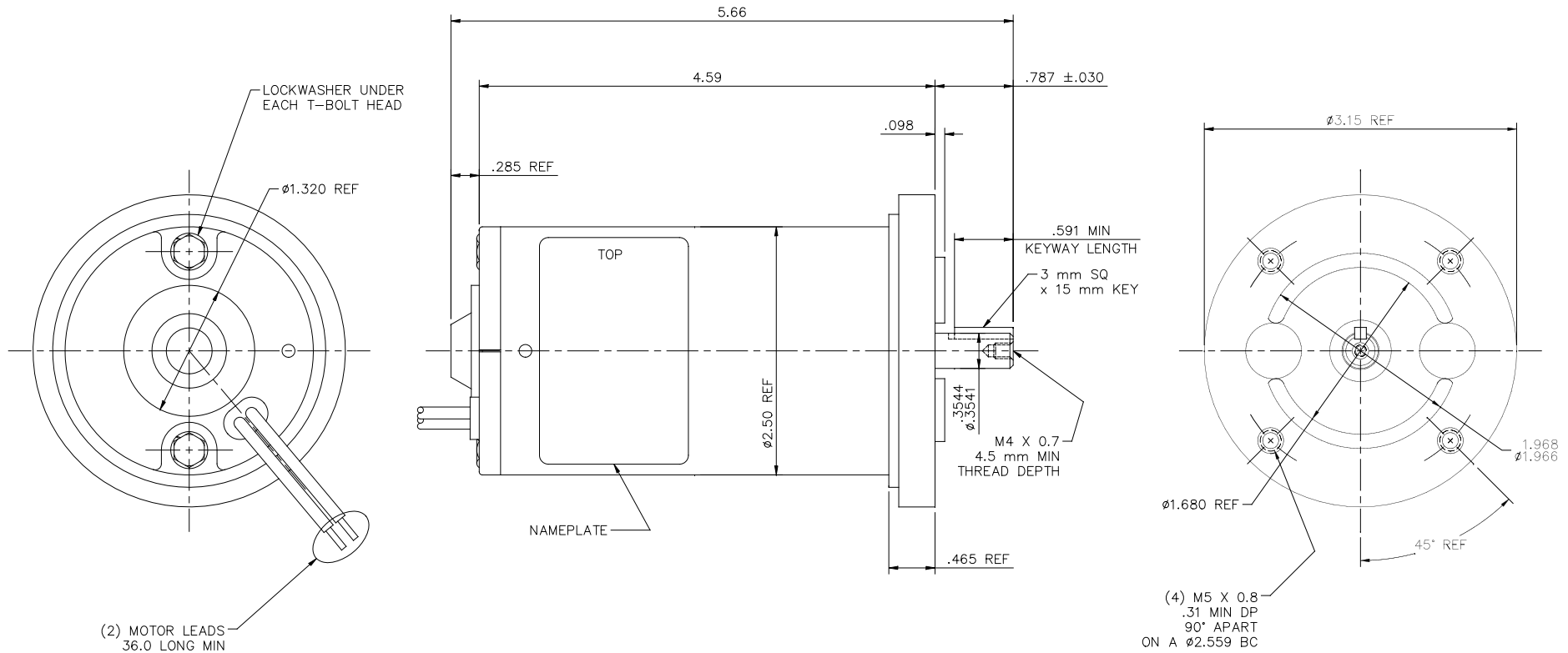
Output KW	0.05 kW	Voltage	90 V
Current	0.75 A	Speed	3000 rpm
Service Factor	1	Efficiency	73.7 %
Duty	S1	Insulation Class	F
Frame	56D	Enclosure	IP44
Overload Protector	No	Ambient Temperature	40 °C
UL	Recognized	CSA	N
CE	Y		

Technical Specifications

Rotation	Reversible	Mounting	B14
Overall Length	5.66 in	Frame Length	3.91 in
Shaft Diameter	0.375 in	Shaft Extension	0.787 in
Outline Drawing	980549OL	Connection Diagram	980549FI


This is an uncontrolled document once printed or downloaded and is subject to change without notice. Date Created: 10/15/2018

980.5490L



- NOTES:
1. END PLAY: .005-.030
 2. BEARING SYSTEM: SLEEVE BOTH ENDS

ORACLE
REV
002

					TOLERANCES UNLESS SPECIFIED			ELECTRIC MOTORS GEARMOTORS AND DRIVES	DRAWN IPG 8/8/05		
					DEC. INCHES				CHK SAD 8/8/05		
D	UPDATED REVISION TO MATCH NEW SYSTEM, ADDED	IPG	12/5/16	IPG .X	±.1		TITLE 25 FRAME DC - B14 C-FACE		APPD	SCALE 1=1	
NOTES, ECO-0114257				.XX	±.03				REF	PRO050148	
01	CHANGED TOLERANCE ON SHAFT EXTENSION, ECR 86568	IPG	8/12/05	SAD .XXX	±.005		MAT'L		FINF	980.549	
00	RELEASED: SAME AS PRO050148	IPG	8/9/05	SAD .XXXX	±.0005				PREV		
NO.	REVISION	BY & DATE		CHK ANG	±1/2"		FINISH				
THIS DRAWING IN DESIGN AND DETAIL IS OUR PROPERTY AND MUST NOT BE USED EXCEPT IN CONNECTION WITH OUR WORK ALL RIGHTS OF DESIGN AND INVENTION ARE RESERVED THIS IS AN ELECTRONICALLY GENERATED DOCUMENT - DO NOT SCALE THIS PRINT				RFP	CAD FILE 9805490L				SIZE	DRAWING NO.	REV.
				DIST				B	980.5490L		D

- 1) HIPOT @ 1250 VOLTS FOR ONE SECOND, BOTH LEADS TO CASE
- 2) ROTATION: CCWLE WITH RED LEAD POSITIVE
- 3) RUN IN @ 90VAC FWR, 0.17 A. MAX, NO LOAD
- 4) TORQUE THRU-BOLTS TO 20-25 IN. LBS


PERFORMANCE SPECIFICATIONS

90VDC (TCR)

TORQUE (OZ.IN)	SPEED (RPM)	MAX AMPS
0	2910-3350	0.13
20	2700-3100	0.72
40	2490-2850	1.30

CHECKS TO OUTLINE DRAWING

- A) SHAFT EXTENSION
- B) LEAD LENGTH
- C) END PLAY: .005-.030

				TOLERANCES UNLESS SPECIFIED		 ELECTRIC MOTORS GEARMOTORS AND DRIVES	DRAWN IPG 8/8/05		
				DEC.	INCHES		CHK SAD 8/8/05		
				.X	±.1		APPD		
				.XX	±.01		SCALE 1=1		
				.XXX	±.005		REF 980.172FI		
00	RELEASED: REF. 980.172FI	IPG 8/8/05	SAD	.XXXX	±.0005	MAT'L.		FMF 980.549	
NO.	REVISION	BY & DATE	CHK	ANG	±1/2"	FINISH		PREV	
THIS DRAWING IN DESIGN AND DETAIL IS OUR PROPERTY AND MUST NOT BE USED EXCEPT IN CONNECTION WITH OUR WORK ALL RIGHTS OF DESIGN AND INVENTION ARE RESERVED THIS IS AN ELECTRONICALLY GENERATED DOCUMENT – DO NOT SCALE THIS PRINT			RFP		CAD FILE 980549FI		SIZE	DRAWING NO.	REV.
			DIST				A	980.549FI	00