

# PRODUCT INFORMATION PACKET



Model No: 56T17DRS70001A3A

Catalog No: E119879.00

..1/2HP..1725RPM.S56.DP.230/460V.3PH.60HZ.CONT.40C.1.25SF.RESILIENT BASE..AUTOMATIC.....

Open Drip Proof (ODP)



Regal and Leeson are trademarks of Regal Beloit Corporation or one of its affiliated companies.

©2018 Regal Beloit Corporation, All Rights Reserved. MC017097E



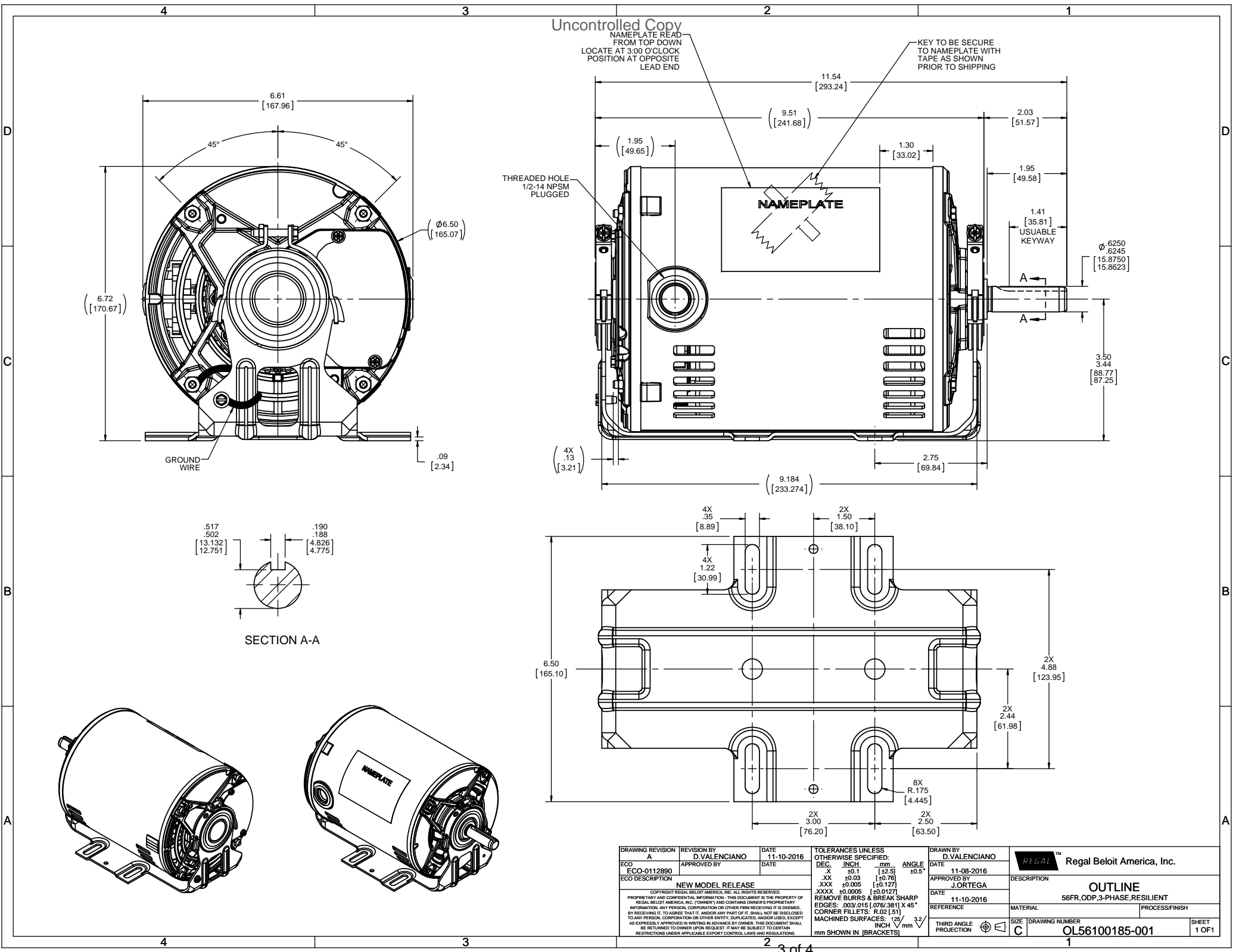


## Nameplate Specifications

Output HP	<b>0.50 Hp</b>	Output KW	<b>0.37 kW</b>
Frequency	<b>60 Hz</b>	Voltage	<b>208-230/460 V</b>
Current	<b>1.7-1.8/0.90 A</b>	Speed	<b>1725 rpm</b>
Service Factor	<b>1.25</b>	Phase	<b>3</b>
Efficiency	<b>78.2 %</b>	Duty	<b>Continuous</b>
Insulation Class	<b>B</b>	Design Code	<b>B</b>
KVA Code	<b>P</b>	Frame	<b>56</b>
Enclosure	<b>Drip Proof</b>	Overload Protector	<b>Automatic</b>
Ambient Temperature	<b>40 °C</b>	Drive End Bearing Size	<b>6203</b>
Opp Drive End Bearing Size	<b>6203</b>	UL	<b>Recognized</b>
CSA	<b>Y</b>	CE	<b>Y</b>
IP Code	<b>22</b>		

## Technical Specifications

Electrical Type	<b>Squirrel Cage Induction Run</b>	Starting Method	<b>Across The Line</b>
Poles	<b>4</b>	Rotation	<b>Reversible</b>
Mounting	<b>Resilient Base</b>	Motor Orientation	<b>HORIZONTAL</b>
Drive End Bearing	<b>BALL</b>	Opp Drive End Bearing	<b>BALL</b>
Frame Material	<b>Rolled Steel</b>	Shaft Type	<b>NEMA 56</b>
Overall Length	<b>11.54 in</b>	Frame Length	<b>7.15 in</b>
Shaft Diameter	<b>0.625 in</b>	Shaft Extension	<b>2.03 in</b>
Assembly/Box Mounting	<b>F1 ONLY</b>		
Outline Drawing	<b>OL56100185-001</b>	Connection Diagram	<b>CDTD104</b>



Uncontrolled Copy

NAMEPLATE READ  
FROM TOP DOWN  
LOCATE AT 3:00 O'CLOCK  
POSITION AT OPPOSITE  
LEAD END

KEY TO BE SECURE  
TO NAMEPLATE WITH  
TAPE AS SHOWN  
PRIOR TO SHIPPING


NAMEPLATE

THREADED HOLE  
1/2-14 NPSM  
PLUGGED

GROUND  
WIRE

SECTION A-A

NAMEPLATE

DRAWING REVISION		REVISION BY	DATE	TOLERANCES UNLESS OTHERWISE SPECIFIED:		DRAWN BY	DATE	 Regal Beloit America, Inc.
ECO		APPROVED BY	DATE	DEC. INCH mm ANGLE		DATE		
ECO-0112890			11-10-2016	X .01 [0.25] 0.5° XX ±0.03 [0.76] XXX ±0.005 [0.127] XXXX ±0.0005 [0.0127]		11-08-2016		
NEW MODEL RELEASE				REMOVE BURRS & BREAK SHARP EDGES: .003/.015 [0.076/.381] X 45° CORNER FILLETS: R.02 [51] MACHINED SURFACES: .125/ 32 mm SHOWN IN [BRACKETS]		APPROVED BY		DESCRIPTION
						J. ORTEGA		OUTLINE
						DATE		56FR, ODP, 3-PHASE, RESILIENT
						REFERENCE		MATERIAL
								PROCESS FINISH
						THIRD ANGLE PROJECTION		SIZE
						C		DRAWING NUMBER
								OL56100185-001
								SHEET
								1 OF 1

4

3

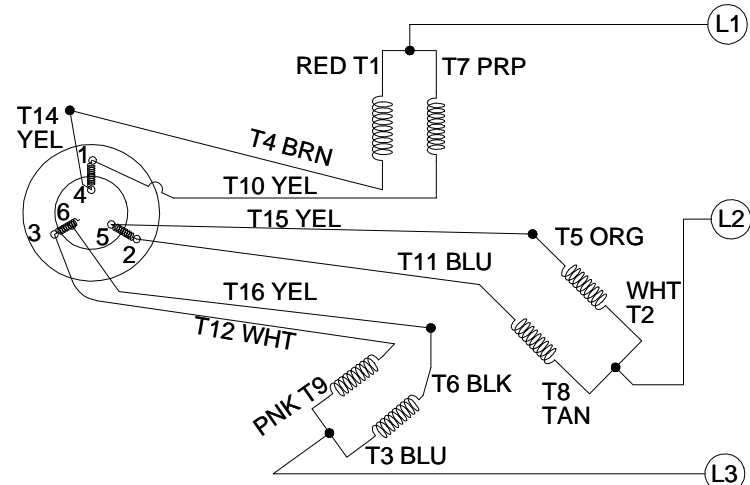
Uncontrolled Copy

2

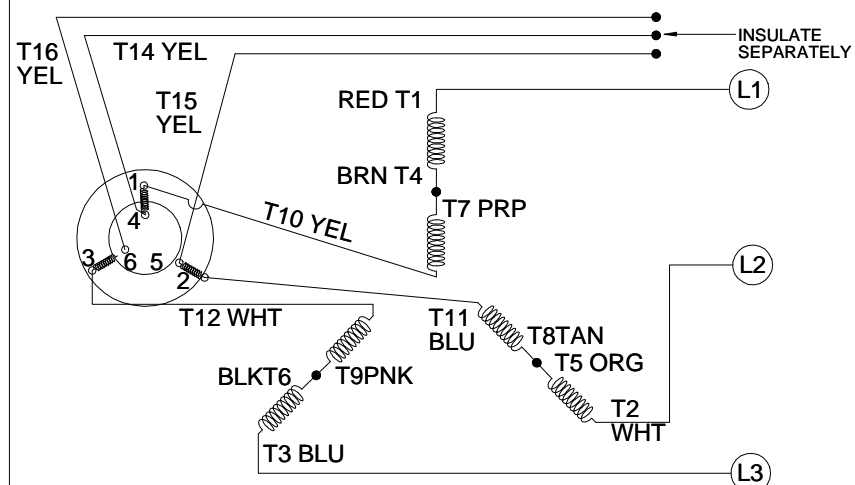
1

-001

## CCW LOW VOLTAGE



## CCW HIGH VOLTAGE



## VIEW OF TERMINAL END

NOTE:

1. TO REVERSE ROTATION, INTERCHANGE ANY TWO LINE CONNECTIONS TO L1, L2, OR L3.

2. CONN DIAGRAM-NAMEPLATE DD10026

DRAWING REVISION D	REVISION BY D.SURYAWANSHI	DATE 07/23/2018
ECO ECO-0148981	APPROVED BY CD	DATE 07/23/2018
ECO DESCRIPTION UPDATED MISSING COLORS		
<small>COPYRIGHT REGAL BELOIT AMERICA, INC. ALL RIGHTS RESERVED.            PROPRIETARY AND CONFIDENTIAL INFORMATION - THIS DOCUMENT IS THE PROPERTY OF            REGAL BELOIT AMERICA, INC. (OWNER) AND CONTAINS OWNER'S PROPRIETARY            INFORMATION. ANY PERSON, CORPORATION OR OTHER FIRM RECEIVING IT IS DEEMED,            BY RECEIVING IT, TO AGREE THAT IT, AND/OR ANY PART OF IT, SHALL NOT BE DISCLOSED            TO ANY PERSON, CORPORATION OR OTHER ENTITY, DUPLICATED, AND/OR USED, EXCEPT            AS EXPRESSLY APPROVED IN WRITING IN ADVANCE BY OWNER. THIS DOCUMENT SHALL            BE RETURNED TO OWNER UPON REQUEST. IT MAY BE SUBJECT TO CERTAIN            RESTRICTIONS UNDER APPLICABLE EXPORT CONTROL LAWS AND REGULATIONS.</small>		

TOLERANCES UNLESS OTHERWISE SPECIFIED:			
DEC.	INCH	mm	ANGLE
.X	±0.1	[±2.5]	±0.5°
.XX	±0.01	[±0.25]	
.XXX	±0.005	[±0.127]	
.XXXX	±0.0005	[±0.0127]	
REMOVE BURRS & BREAK SHARP			
EDGES: .003/.015 [0.076/.381]			
CORNER FILLETS: .02 [51]			
MACHINED SURFACES: 125/3.2			
mm SHOWN IN [BRACKETS]			

DRAWN BY G. RODRIGUEZ	DATE 03-31-2016
APPROVED BY R. VALENZUELA	DATE 03-31-2016
REFERENCE SKT52A105383CA	THIRD ANGLE PROJECTION

Regal Beloit America, Inc.	
DESCRIPTION CONN DIAGRAM-EXTERNAL	
MATERIAL	PROCESS/FINISH
SIZE B	DRAWING NUMBER CDTD104
SHEET 1 OF 1	