

PRODUCT INFORMATION PACKET



Model No: C184T17FB74A

Catalog No: 132476.00

..5HP..1800RPM.184T.TEFC.230/460V.3PH.60HZ.CONT.40C.1.15S.F..RIGID.....BRAKEMOTOR.....

Brake



Regal and Leeson are trademarks of Regal Beloit Corporation or one of its affiliated companies.

©2018 Regal Beloit Corporation, All Rights Reserved. MC017097E

REGAL

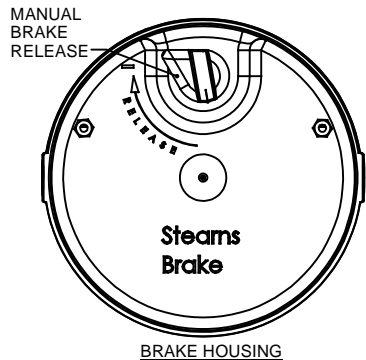
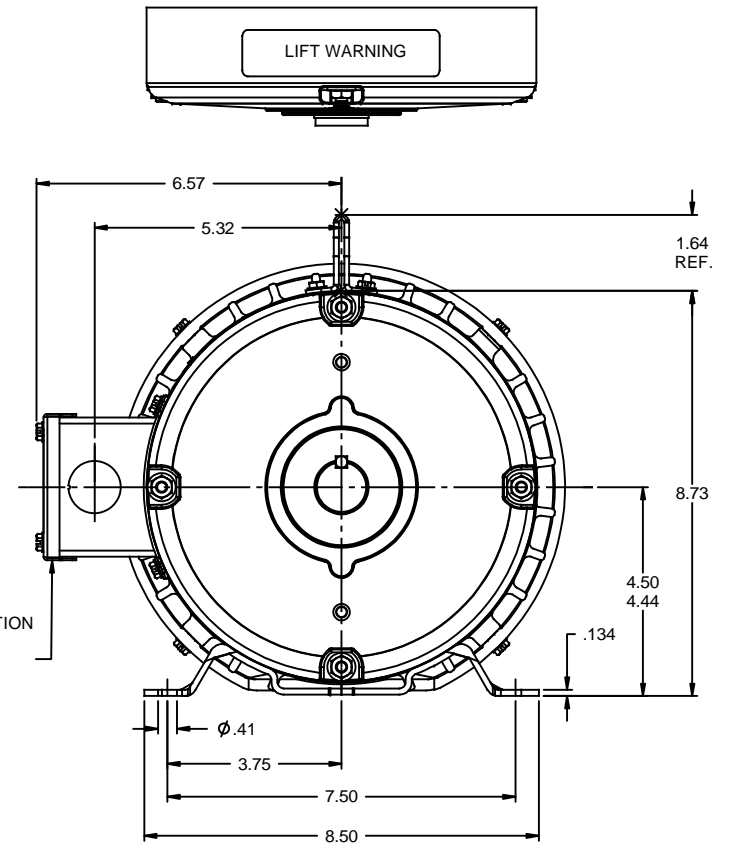
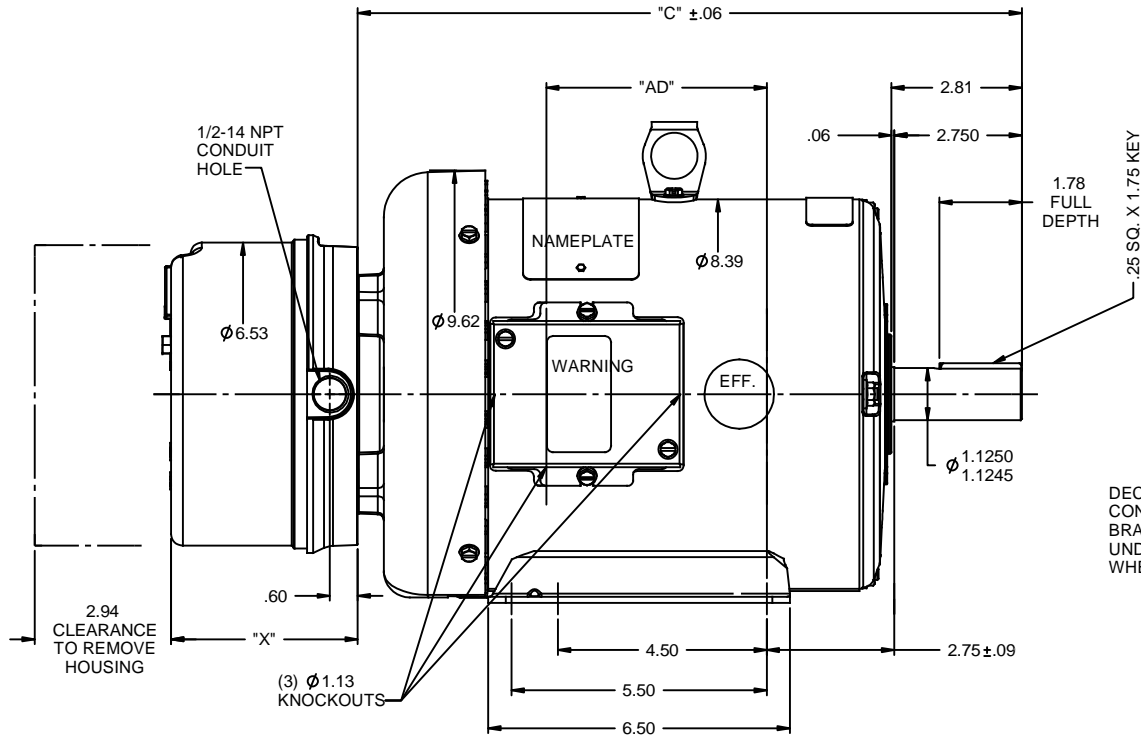


Nameplate Specifications

Output HP	5 Hp	Output KW	3.7 kW
Frequency	60 Hz	Voltage	230/460 V
Current	12.6/6.3 A	Speed	1760 rpm
Service Factor	1.15	Phase	3
Efficiency	89.5 %	Duty	Continuous
Insulation Class	F	Design Code	B
KVA Code	G	Frame	184T
Enclosure	Totally Enclosed Fan Cooled	Overload Protector	No
Ambient Temperature	40 °C	Drive End Bearing Size	6206
Opp Drive End Bearing Size	6205	UL	Recognized
CSA	Y	CE	Y
IP Code	43		

Technical Specifications

Electrical Type	Squirrel Cage Induction Run	Starting Method	Across The Line
Poles	4	Rotation	Reversible
Mounting	Rigid base	Motor Orientation	HORIZONTAL
Drive End Bearing	BALL	Opp Drive End Bearing	BALL
Frame Material	Rolled Steel	Shaft Type	T
Overall Length	15.82 in	Frame Length	9.50 in
Shaft Diameter	1.125 in	Shaft Extension	2.75 in
Assembly/Box Mounting	F1 ONLY		
Outline Drawing	035517-950	Connection Diagram	005010.15



BRAKE TORQUE	"X"
15 FT-LB	4.00
20 FT-LB	4.46
25 FT-LB	4.46

DASH NO.	"C"	"AD"
800	14.32	4.75
850	14.82	5.25
900	15.32	5.75
950	15.82	6.25
1000	16.32	6.75
1050	16.82	7.25
1100	17.32	7.75
1150	17.82	8.25

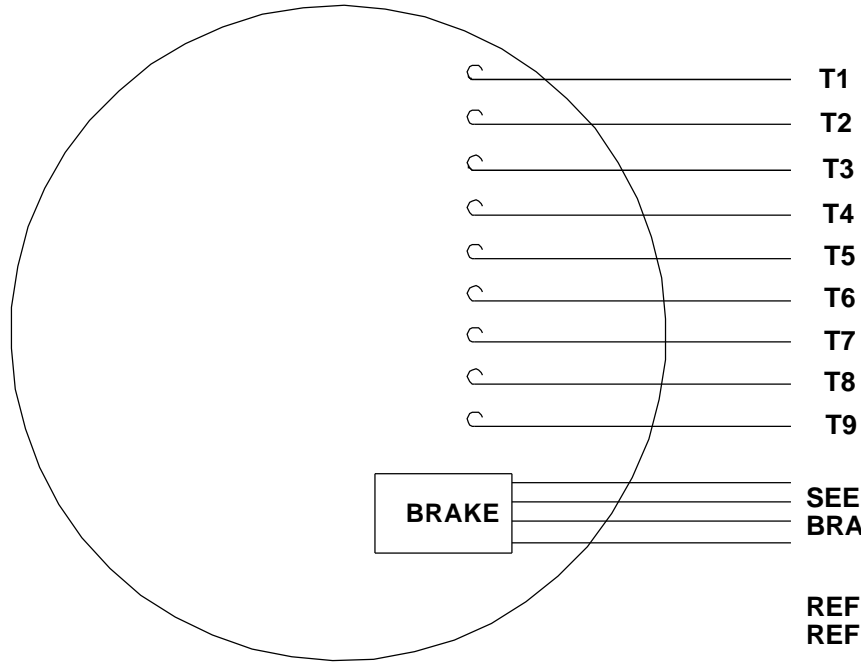
GASKETS THROUGHOUT
MINIMUM FRAME LENGTH SHOULD BE 8.00"

TOLERANCES UNLESS SPECIFIED:		DRAWN RDW 4/18/07	
DEC	INCHES	CHK	
X	$\pm .1$	APPR	SW 4/18/07
XX	$\pm .03$	SCALE	3:8
XXX	$\pm .005$	REF	OL131613
XX	XXX $\pm .0005$	FMF	
- REDRAWN ON SOLIDWORKS		PAGE OF	
NO	REVISION	BY & DATE	FINISH
THIRD ANGLE PROJECTION		CHK ANG $\pm 1/2^\circ$	FINISH
		RFP	PREV
NETWORK FILE NAME		SIZE	DRAWING NO
		B	035517
		REV	-

VIEW FROM OUTSIDE OF MOTOR AT SWITCH END.

CAUTION:

**LEAD WIRE INSULATION TO EXTEND
MINIMUM OF 1/4" INTO CONNECTOR
INSULATION**

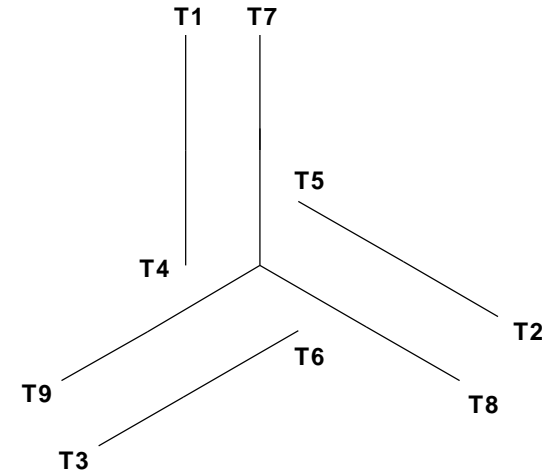


**SEE TABLE FOR
BRAKE CONNECTIONS**

REF. DECAL (MOTOR) - 004014

REF. DECAL (BRAKE) - 080034 (STEARNS & DINGS BRAKE)

LINE LEADS


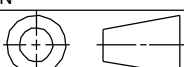


VOLTAGE	L1	L2	L3	JOIN & INSULATE
HIGH	T1	T2	T3	(T4, T7) (T5, T8) (T6, T9)
LOW	T1, T7	T2, T8	T3, T9	T4, T5, T6

TYPE "T" W/O PROTECTOR

BRAKE CONNECTION						
VOLTAGE	STERNS BRAKE			DINGS BRAKE		
	L1	L2	Join	L1	L2	Join
HIGH	1(RED)	2(RED)	3(BLACK) 4(BLACK)	2(BLACK)	4(YELLOW)	1(YELLOW) 3(BLACK)
LOW	1(RED) 3(BLACK)	2(RED) 4(BLACK)	-----	2(BLACK) 3(BLACK)	1(YELLOW) 4(YELLOW)	-----

RBC PROPRIETARY AND CONFIDENTIAL INFORMATION
This document is the property of REGAL BELOIT CORPORATION ("RBC") including its subsidiaries and divisions and contains proprietary information of RBC. This document is loaned on the express condition that neither it nor the information contained therein shall be disclosed to others without the express written consent of RBC, and that the information shall be used by the recipient only as approved expressly by RBC. This document shall be returned to RBC upon its request. This document may be subject to certain restrictions under U.S. export control laws and regulations.

				TOLERANCES UNLESS SPECIFIED			ELECTRIC MOTORS GEARMOTORS AND DRIVES		DRAWN JJK 09/17/96		
				DEC	INCHES				CHK		
				.X	±.1				APPR		
				.XX	±.01	TITLE EXTERNAL WIRING DIAGRAM				SCALE 1:1	
--	REDRAWN IN SOLIDWORKS	VJB 02/08/11		.XXX	±.005	STANDARD 3 PHASE - DUAL VOLTAGE				REF 005010-01	
01	ADDED DINGS AND BRAKE TABLE (PER CN114156)	TMZ 11/12/96		.XXXX	±.0005	MAT'L W/STEARNS OR DINGS DUAL VOLTAGE BRAKE CONN.				FMF	
NO	REVISION	BY & DATE	CHK	ANG	±1/2°	FINISH LEESON STOCK				PAGE OF	
<div>THIRD ANGLE PROJECTION</div> 			RFP		PREV			SIZE	DRAWING NO		REV
			NETWORK FILE NAME 00501015						A	005010-15	

Data Sheet

Date: 1/23/2018

132476.00



Data @ 460 V

Motor Load Data

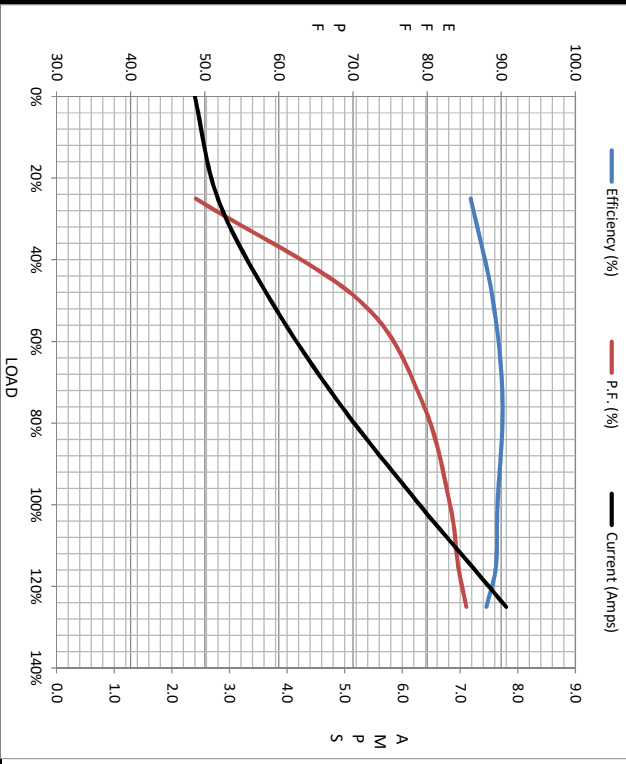
Load	0%	25%	50%	75%	100%	115%	125%	LR
Current (Amps)	2.40	2.80	3.7	4.9	6.3	7.2	7.8	49.0
Torque (ft-lb)	0.00	3.7	7.4	11.1	15.0	17.4	18.8	30.1
RPM	1800	1790	1779	1768	1760	1747	1742	0
Efficiency (%)		85.9	88.9	90.2	89.5	89.3	88.0	
P.F. (%)	6.8	48.8	70.9	79.4	83.1	84.2	85.3	0.0

Motor Speed Data

	LR	Pull-Up	BD	Rated	Idle
Speed (RPM)	0	900	1656	1760	1800
Current (Amps)	49.0	45.1	29.4	6.3	2.40
Torque (ft-lb)	30.1	29.8	50.2	15.0	0.00

Information Block

HP	5.0
Sync. RPM	1800
Frame	184
Enclosure	TEFC
Construction	TFW
Voltage	230/460 V
Frequency	60 Hz
Design	B
LR Code letter	J
Service Factor	1.15
Temp Rise @ FL	65 °C
Duty	CONT
Ambient	40 °C
Elevation	1,000 feet
Rotor/Shaft wk ²	0.49 Lb-Ft ²
Rel Wdg	T84170 FR
Sound Pressure @ 1M	55 dBA
VFD Rating	NONE
Outline Dwg	035517-950
Conn. Diag	005010.15
Additional Specifications:	
0	
EQUIV CKT (OHMS / PHASE)	
R1	R2
0.0000	0.0000
X1	X2
0.0000	0.0000
Xm	
0	



Speed - Torque Curve

